

Single Momentary Switch

RN-SM10
Rated at: 250 V~ 50/60 Hz 10 AX



Dual Momentary Switch

RN-DM10
Rated at: 250 V~ 50/60 Hz 10 AX



Note:
These products are only to be used with a step/impulse relay.

Important Notes Please read before installing.

1. Protect Momentary Switch from dust and dirt when painting or during construction.
2. Do not exceed the maximum rating of 10 AX.
3. This Momentary Switch complies with IEC and EN 60669-1.
4. Recommended backbox depth is 35 mm.
5. Install in accordance with all national and local electrical codes.
6. Operate between 0 °C and 40 °C.
7. For indoor use only.
8. **Clean with a soft damp cloth only. DO NOT** use any chemical cleaners.
9. Recommended torque for terminal block screws is 0,8 N•m.

Technical Assistance

For questions concerning the installation or operation of this product, call **Lutron's Headquarters**. Please provide exact model number when calling.

Lutron EA LTD
Tel: +44.(0)20.7702.0657
Fax: +44.(0)20.7480.6899
www.lutron.com/europe

Freephone:
U.K.: 0800.282.107
Spain: 900-0974.452
France: 0800.90.12.18
Germany: 00800.5887.6635
Northern China: 10.800.712.1536
Southern China: 10.800.120.1536
Macau: 0800.401
Hong Kong: 800/901/849
Singapore: 800/120/4491
Taiwan: 00/801-137-737
Thailand: 001.800.120.665853
Indonesia: 001.803.011.3994

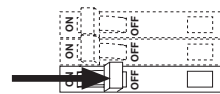
Limited Warranty

Lutron EA Ltd. ("Lutron EA") warrants each unit to be free from defects in material and workmanship and to perform under normal use and service. To the extent permitted by law, Lutron EA and Lutron Electronics Co., Inc. ("Lutron") make no warranties or representations as to the units except as set forth herein. This warranty shall run for a period of two years from the date of purchase and Lutron's obligations under this warranty are limited to remedying any defect, replacing any defective part or replacement (at Lutron EA's sole option) and shall be effective only if the defective unit is shipped to Lutron EA postage prepaid within 24 months after purchase of the unit. Repair or replacement of the unit does not affect the expiry date of the warranty. This warranty does not cover damage or deficiencies due to abuse, misuse, inadequate wiring or insulation or use or installation other than in accordance with instructions accompanying the unit. To the extent permitted by law, neither Lutron EA nor Lutron shall be liable for any other loss or damage including consequential or special loss or damages, loss of profits, loss of income, or loss of contracts arising out of or relating to the supply of the unit or the use of the unit and the purchaser assumes and will hold harmless Lutron EA and Lutron in respect of all such loss or damage. Nothing in this warranty shall have the effect of limiting or excluding Lutron EA's or Lutron's liability for fraud or for death or personal injury resulting from its own negligence, or any other liability, if and to the extent that the same may not be limited or excluded as a matter of law. This warranty does not affect the statutory rights of consumer purchasers of this product. Although every attempt is made to ensure that catalogue information is accurate and up-to-date, please check with Lutron EA before specifying or purchasing this equipment to confirm availability, exact specifications, and suitability for your application. Patents pending.

Lutron and Rania are registered trademarks of Lutron Electronics Co., Inc. in the Community Trademark System.
© 2008 Lutron Electronics Co., Inc.

Installation

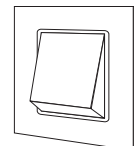
1 Turn Power OFF at MCB (Circuit Breaker) or Fuse Box.



Warning: Verify power to each momentary switch is OFF before proceeding. Otherwise, death or serious injury could result.

2 Remove the Existing Momentary Switch.

Remove the existing momentary switch mounting screws. Remove the existing momentary switch from wall.

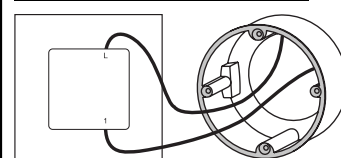


Note: DO NOT disconnect wires from the existing momentary switch.

3 Tag and Disconnect the Existing Momentary Switch Wires.

Note: If replacing an existing dual momentary switch, perform the following procedure on each momentary switch:

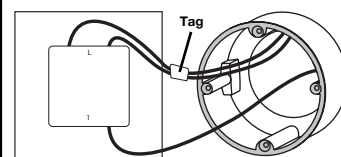
Single-Location Control



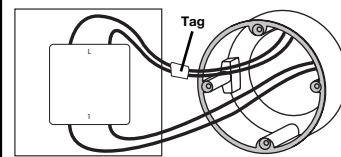
One momentary switch controlling a light fixture:
No tagging is needed.

Multi-Location Control

Start

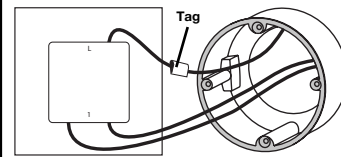


Middle



Two or more momentary switches controlling a light fixture:
Tag the wire(s) connected to the live terminal.

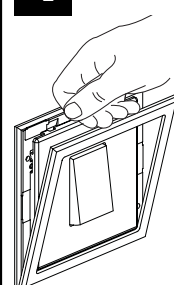
End



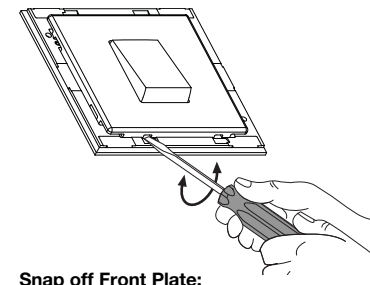
Important Note:

The existing momentary switch may have two wires attached to the same terminal. Tag these two wires together before disconnecting. Connect these two wires to the same terminal in step 5.

4 Prepare the New Momentary Switch for Installation.



Snap off Frame



Snap off Front Plate:
Insert and rotate a small flathead screwdriver in the slots as shown.

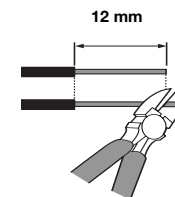
5 Wiring the New Momentary Switch.

Note: If replacing an existing dual momentary switch, perform the following procedure on each momentary switch.

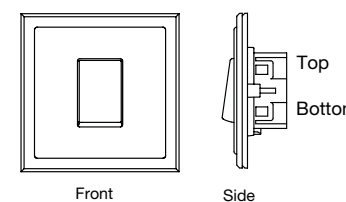
Important Wiring Information

Note: Permanent damage can be caused by overtightening the terminal screws. Recommended torque for terminal block screws is 0,8 N•m.

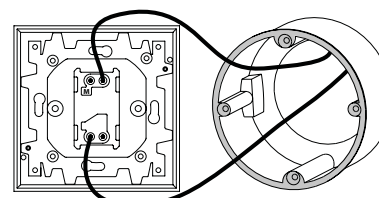
Trim or strip backbox wires to 12 mm. Insert wires fully into the terminals and tighten screws.



Note: The momentary switch does not require an earth wire. Follow the local and national wiring codes to terminate the earth wire in the backbox.

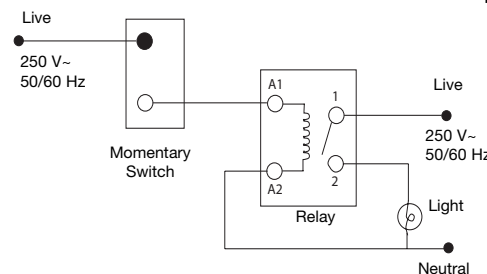


Single-Location Wiring



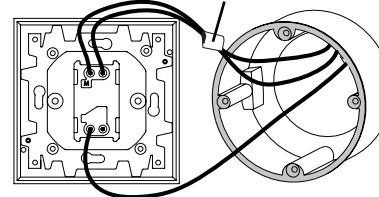
- Connect one of the insulated wires removed from the existing momentary switch to one of the top terminals.
- Connect the other insulated wire removed from the existing momentary switch to one of the bottom terminals.
- The relay should be connected as shown in the wiring diagram below.

Reference Wiring Diagram

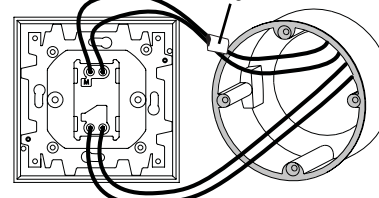


Multi-Location Wiring

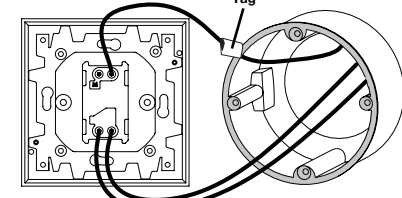
Start



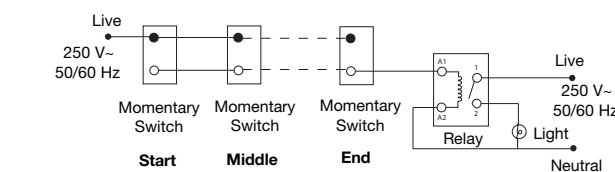
Middle



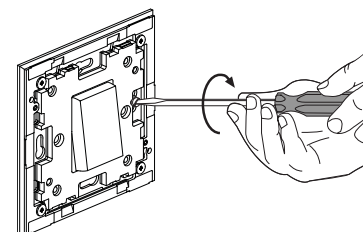
End



Reference Wiring Diagram



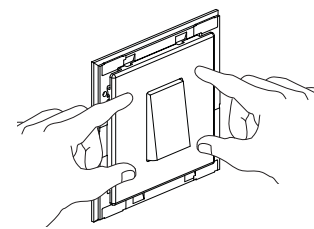
6 Mount and Align the Momentary Switch.



- Secure Momentary Switch to the backbox.

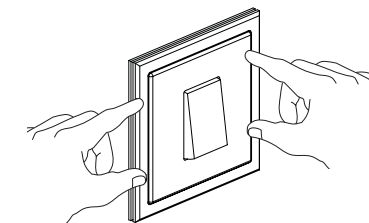
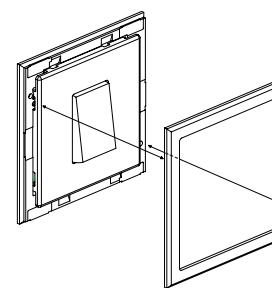
Note: Do not pinch wires. Do not overtighten mounting screws.

7 Snap on Front Plate.



- Press corners to ensure all four snaps are engaged.

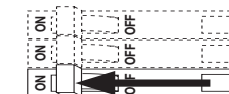
8 Snap on Frame.



Align the pins with the holes.

Press all sides to ensure all six snaps are engaged.

9 Turn Power ON at MCB (Circuit Breaker) or Fuse Box.



Problems

If the momentary switch does not work, check that the light bulb has not burned out before contacting Lutron® Technical Assistance.