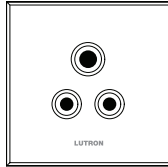


## Round Pin Socket

**RN-5AUK**  
Rated at: 5 A 250 V~



### Important Notes

Please read before installing.

1. This socket is for use with 1,5 to 2,5 mm<sup>2</sup> rigid wire.
2. Protect receptacle from dust and dirt when painting or during construction.
3. Minimum backbox depth is 25 mm.
4. Install in accordance with all national and local electrical codes.
5. Operate between 0 °C and 40 °C (32 °F to 104 °F).
6. For indoor use only.
7. **Clean with a soft damp cloth only. DO NOT** use any chemical cleaners.
8. Recommended torque for terminal block screws is 0,8 N•m.

### Technical Assistance

For questions concerning the installation or operation of this product, call **Lutron's Headquarters**. Please provide exact model number when calling.

#### Lutron EA LTD

Tel: +44.(0)20.7702.0657  
Fax: +44.(0)20.7480.6899  
www.lutron.com/europe

#### Freephone:

U.K.: 0800.282.107  
Spain: 900.0974.452  
France: 0800.90.12.18  
Germany: 00800.5887.6635  
Northern China: 10.800.712.1536  
Southern China: 10.800.120.1536  
Macau: 0800.401  
Hong Kong: 800.901.849  
Singapore: 800.120.4491  
Taiwan: 00.801.137.737  
Thailand: 001.800.120.665853  
Indonesia: 001.803.011.3994

#### Lutron GL LTD

Tel: +65.6220.4666  
Fax: +65.6220.4333  
www.lutron.com/asia

### Limited Warranty

Lutron EA Ltd. ("Lutron EA") warrants each unit to be free from defects in material and workmanship and to perform under normal use and service. To the extent permitted by law, Lutron EA and Lutron Electronics Co. Inc. ("Lutron") make no warranties or representations as to the units except as set forth herein. This warranty shall run for a period of two years from the date of purchase and Lutron's obligations under this warranty are limited to remedying any defect, replacing any defective part or replacement (at Lutron EA's sole option) and shall be effective only if the defective unit is shipped to Lutron EA postage prepaid within 24 months after purchase of the unit. Repair or replacement of the unit does not affect the expiry date of the warranty. This warranty does not cover damage or deficiencies due to abuse, misuse, inadequate wiring or insulation or use or installation other than in accordance with instructions accompanying the unit.

To the extent permitted by law, neither Lutron EA nor Lutron shall be liable for any other loss or damage including consequential or special loss or damages, loss of profits, loss of income, or loss of contracts arising out of or relating to the supply of the unit or the use of the unit and the purchaser assumes and will hold harmless Lutron EA and Lutron in respect of all such loss or damage. Nothing in this warranty shall have the effect of limiting or excluding Lutron EA's or Lutron's liability for fraud or for death or personal injury resulting from its own negligence, or any other liability, if and to the extent that the same may not be limited or excluded as a matter of law.

This warranty does not affect the statutory rights of consumer purchasers of this product.

Although every attempt is made to ensure that catalogue information is accurate and up-to-date, please check with Lutron EA before specifying or purchasing this equipment to confirm availability, exact specifications, and suitability for your application.

Lutron is a registered trademark in the United Kingdom and the Community Trademark System.

© 2008 Lutron Electronics Co., Inc.

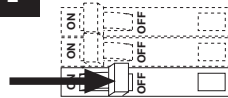
# LUTRON

Lutron EA Ltd.  
Lutron House  
6 Sovereign Close  
Wapping, London E1W 3JF, England.  
Made and printed in the U.S.A. 8/08 P/N 030-1044 Rev. A

Lutron GL Ltd.  
15 Hoe Chiang Road  
#07-03  
Singapore 089316

## Installation

### 1 Turn power OFF at MCB (circuit breaker) or fuse box.



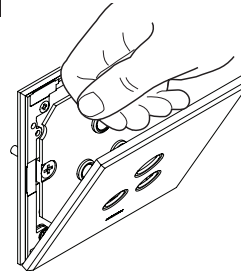
### 2 Remove the existing socket.

Disconnect all wires.



**Warning:** Verify power is OFF before proceeding. Failure to turn power off could result in death or serious injury.

### 3 Prepare the socket for installation.

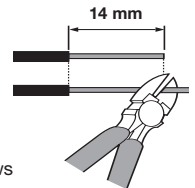


Remove Frontplate

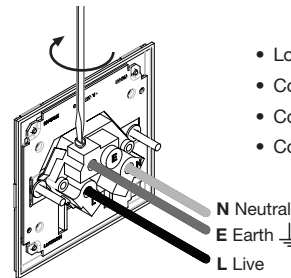
### 4 Wiring the socket.

#### Important Wiring Information

Trim or strip backbox wires to 14 mm.



**Note:** Permanent damage can be caused by overtightening the terminal screws. Recommended torque for terminal block screws is 0,8 N•m

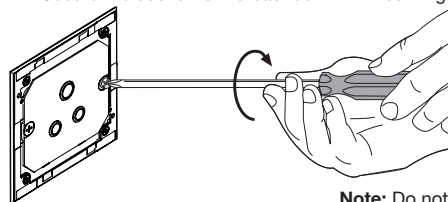


- Loosen the terminal screws and fully insert the wires.
- Connect ground wire from backbox to the  $\perp$  terminal.
- Connect the live wire(s) to terminal L.
- Connect the neutral wire(s) to terminal N.

### 5 Mount and align the socket.

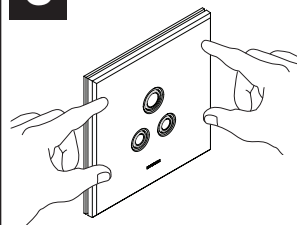
Push wires back into backbox. Do not pinch wires.

Secure the socket to the backbox with mounting screws.



**Note:** Do not overtighten mounting screws. Recommended torque is 0,5 N•m.

### 6 Snap on frontplate.



- Press corners and sides to ensure all six snaps are engaged.

### 7 Turn power ON at MCB (circuit breaker) or fuse box.

