



P/N 030-1049

CARS-15-TR	15 A	60 Hz	125 V~
CARS-15-TR	15 A	60 Hz	125 V~
NTR-20-TR	20 A	60 Hz	125 V~
SCRS-15-TR	15 A	60 Hz	125 V~
SCRS-20-TR	20 A	60 Hz	125 V~

Purchase Lutron wallplate separately for CARS and SCRS models.

Important Notes

Please read before installing.

1. Connect only copper or copper clad wire to receptacle. See device for strip length.
2. Do not connect aluminum wire to this device.
3. Install in accordance with all national and local electrical codes.
4. **Clean unit with a soft damp cloth only.** Do not use any chemical cleaners.

Technical Assistance

If you have questions concerning the installation or operation of this product, call the **Lutron Technical Support Center**. Please provide exact model number when calling.

1.800.523.9466 (U.S.A., Canada, and the Caribbean)

other countries call, +1.610.282.3800

Fax +1.610.282.6311

Internet: www.lutron.com

Limited Warranty (Valid only in U.S.A., Canada, Puerto Rico, and the Caribbean.)

Lutron will, at its option, repair or replace any unit that is defective in materials or manufacture within one year after purchase. For warranty service, return unit to place of purchase or mail to Lutron at 7200 Suter Rd., Coopersburg, PA 18036-1299, postage pre-paid. **THIS WARRANTY IS IN LIEU OF ALL OTHER EXPRESS WARRANTIES, AND THE IMPLIED WARRANTY OF MERCHANTABILITY IS LIMITED TO ONE YEAR FROM PURCHASE. THIS WARRANTY DOES NOT COVER THE COST OF INSTALLATION, REMOVAL OR REINSTALLATION, OR DAMAGE RESULTING FROM MISUSE, ABUSE, OR DAMAGE FROM IMPROPER WIRING OR INSTALLATION. THIS WARRANTY DOES NOT COVER INCIDENTAL OR CONSEQUENTIAL DAMAGES. LUTRON'S LIABILITY ON ANY CLAIM FOR DAMAGES ARISING OUT OF OR IN CONNECTION WITH THE MANUFACTURE, SALE, INSTALLATION, DELIVERY, OR USE OF THE UNIT SHALL NEVER EXCEED THE PURCHASE PRICE OF THE UNIT.**

This warranty gives you specific legal rights, and you may have other rights which vary from state to state. Some states do not allow the exclusion or limitation of incidental or consequential damages, or limitation on how long an implied warranty may last, so the above limitations may not apply to you.

Lutron is a registered trademark of Lutron Electronics Co., Inc.

© 2008 Lutron Electronics Co., Inc.

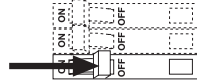
LUTRON®

Lutron Electronics Co., Inc.
7200 Suter Road
Coopersburg, PA 18036-1299, U.S.A.
Made and printed in U.S.A. 8/08 P/N 030-1049 Rev. A

Installation

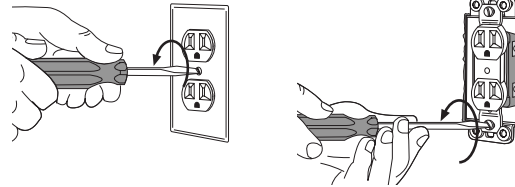
1 Turning OFF power.

Turn power OFF at circuit breaker (or remove fuse).



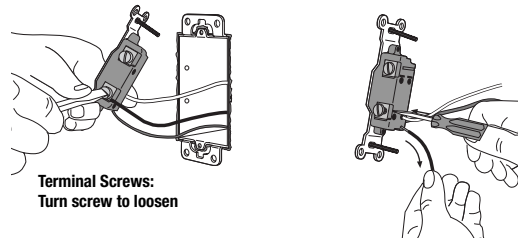
2 Removing wallplate and receptacle.

Remove wallplate and receptacle mounting screws. Carefully remove receptacle from wall (**do not remove wires**).



3 Disconnecting wires.

Carefully disconnect receptacle wires.



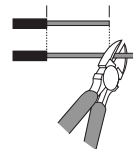
Terminal Screws:
Turn screw to loosen

Backwired:
Insert screwdriver.
Pull out wire.

4 Preparing wires.

Trim or strip all wires to the length shown on the strip gauge on the back of the receptacle.

Trim or strip wires to proper length. **Solid copper wire only.**



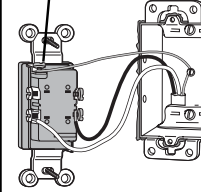
Receptacle wire capacities:

15 A Receptacle - 10 AWG (2.5 mm²) to 14 AWG (1.5 mm²) wire.

20 A Receptacle - 10 AWG (2.5 mm²) to 12 AWG (2.0 mm²) wire.

5 Wiring the receptacle.

Ground (Green screw)

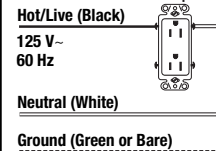


Using screw terminals:

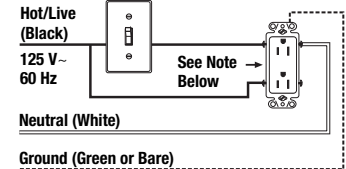
- Connect the ground wire in the wallbox to the green ground screw.
- Connect the hot/live (black) wires to the brass screw terminals.
- Connect the neutral (white) wires to the silver screw terminals.

Reference Wiring Diagrams

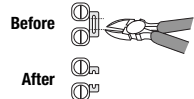
Standard wiring



Advanced wiring: Switch controls upper receptacle

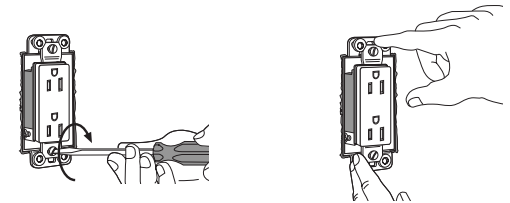


NOTE: To control each section of the receptacle independently, cut off or remove the connecting link with a wire cutter.

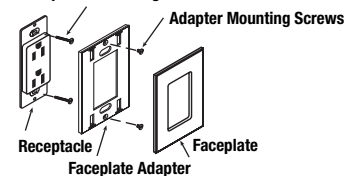


6 Mounting receptacle to wallbox.

- Form wires carefully into the wallbox, mount and align receptacle.
- Install wallplate.



Receptacle Mounting Screws



7 Turning ON power.

- Turn power ON at circuit breaker (or replace fuse).

