



Incandescent / Halogen Dimmer

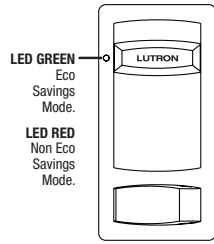
Rated at 120 V~ 60 Hz 600 W

Model:
MK-600PI

Important Notes

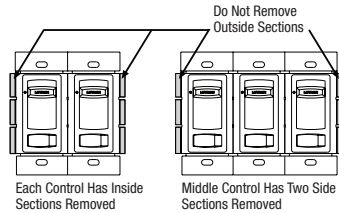
Please read before installing.

- CAUTION:** Use only with permanently-installed 120 V~ incandescent or halogen fixtures. To avoid overheating and possible damage to other equipment, do not use to control receptacles, fluorescent lighting fixtures, motor-driven appliances, or transformer-supplied appliances.
- Install in accordance with all national and local electrical codes.
- When no "grounding means" exist within the wallbox then NEC® 2008, Article 404.9 allows a dimmer without a grounding connection to be installed as a replacement, as long as a plastic, noncombustible wallplate is used. For this type of installation, cap or remove the green ground wire on the dimmer and use an appropriate wallplate such as Lutron's Claro® series wallplates.
- For new installations, install a test switch before installing the dimmer.
- Protect dimmer from dust and dirt when painting or spackling.
- It is normal for the dimmer to feel warm to the touch during operation.
- Clean dimmer with a **soft damp cloth only**. Do not use any chemical cleaners.
- For indoor use only.
- This product is not recommended for self-ballasting compact fluorescent lamps.
- Controls must be mounted vertically. See stamp on control for correct positioning.



Multigang Installations

When installing more than one control in the same wallbox, it may be necessary to remove all inner side sections prior to wiring (see below). If pre-installed, remove the Lutron wallplate and wallplate adapter from dimmer. Using pliers, bend side section up and down until it breaks off. Repeat for each side section to be removed. Removal of dimmer side sections reduces maximum load capacity. Refer to chart below for maximum dimmer capacity.



Dimmer Capacity Chart

Dimmer Rating	No sides removed	1 side removed	2 sides removed
600 W	600 W	500 W	400 W

Technical Assistance

If you have questions concerning the installation or operation of this product, call the **Lutron Technical Support Center**. Please provide exact model number when calling.

U.S.A. and Canada (24 hrs / 7 days)
1.800.523.9466

Fax +1.610.282.6311

Other countries 8am – 8pm ET
+1.610.282.3800

<http://www.lutron.com>

Limited Warranty (valid only in the U.S.A., Canada, Puerto Rico, and the Caribbean.)

Lutron will, at its option, repair or replace any unit that is defective in materials or manufacture within one year after purchase. For warranty service, return unit to place of purchase or mail to Lutron at 7200 Suter Rd., Coopersburg, PA 18036-1299, postage pre-paid.

THIS WARRANTY IS IN LIEU OF ALL OTHER EXPRESS WARRANTIES, AND THE IMPLIED WARRANTY OF MERCHANTABILITY IS LIMITED TO ONE YEAR FROM PURCHASE. THIS WARRANTY DOES NOT COVER THE COST OF INSTALLATION, REMOVAL OR REINSTALLATION, OR DAMAGE RESULTING FROM MISUSE, ABUSE, OR DAMAGE FROM IMPROPER WIRING OR INSTALLATION. THIS WARRANTY DOES NOT COVER INCIDENTAL OR CONSEQUENTIAL DAMAGES. LUTRON'S LIABILITY ON ANY CLAIM FOR DAMAGES ARISING OUT OF OR IN CONNECTION WITH THE MANUFACTURE, SALE, INSTALLATION, DELIVERY, OR USE OF THE UNIT SHALL NEVER EXCEED THE PURCHASE PRICE OF THE UNIT.

This warranty gives you specific legal rights, and you may have other rights which vary from state to state. Some states do not allow the exclusion of incidental or consequential damages, or limitation on how long an implied warranty may last, so the above limitations may not apply to you.

U.S. and foreign patents pending. Lutron, and Claro are registered trademarks and Meadowlark is a trademark of Lutron Electronics Co., Inc. NEC is a registered trademark of the National Fire Protection Association, Quincy, Massachusetts.

© 2009 Lutron Electronics Co., Inc.

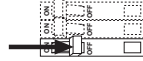
LUTRON.

Lutron Electronics Co., Inc.
7200 Suter Road
Coopersburg, PA 18036-1299, U.S.A.
Printed in China
4/09 P/N 030-1069 Rev. A

Installation

1 Turning OFF Power.

- Turn power OFF at circuit breaker (or remove fuse).

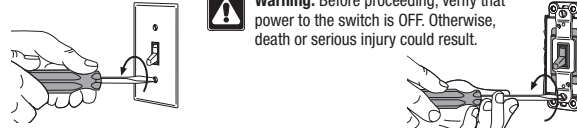


2 Removing Wallplate and Switch.

- Remove wallplate and switch mounting screws.
- Carefully remove switch from wall (**do not remove wires**).

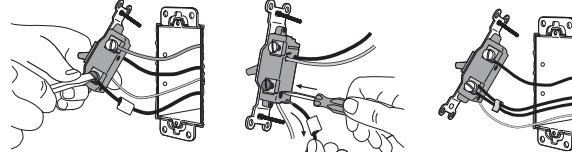
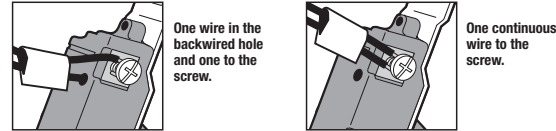


Warning: Before proceeding, verify that power to the switch is OFF. Otherwise, death or serious injury could result.



3 Disconnecting Switch Wires.

Important Note: Your wall switch may have two wires attached to the same screw (see illustrations below for examples). Tape these two wires together before disconnecting. When wiring, connect both wires to the Dimmer wire in Step 4.

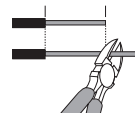


Screw Terminals:
Turn screws to loosen.

Push-in Terminals:
Insert screwdriver. Pull wire out.

Looped Wire:
Turn screw to loosen.

4 Before Wiring the Dimmer.

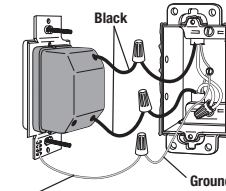


Trim or strip wallbox wires to the length indicated by the strip gauge on the back of the Dimmer.

5 Wiring the Dimmer.

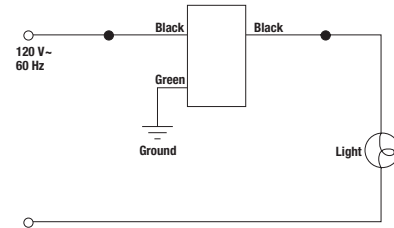
Note: Wire location will vary by product. Reference wires by color, not location.

Single-Pole Wiring



- Connect the **green** dimmer ground wire to the green or bare copper ground wire in the wallbox. (See Important Note 3.)
- Connect one of the **black** dimmer wires to either of the wires removed from the switch.
- Connect the remaining **black** dimmer wire to the other wire removed from the switch.

Wiring Diagram



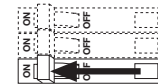
6 Mounting Dimmer to Wallbox.

- Form wires carefully into the wallbox, mount and align dimmer.
- Install wallplate.



7 Turning ON Power.

- Turn power ON at circuit breaker (or replace fuse).



Basic Operation.

Slider: Controls light level. Up increases light level, down decreases light level.

Switch: Turns lights ON and OFF.

