

Troubleshooting

Symptom	Possible Cause
Light does not turn on.	<ul style="list-style-type: none"> • Front Accessible Service Switch (FASS) on the dimmer is switched to the left. • Light bulb(s) burned out. • Breaker is off or tripped.
"The Hand" Infrared Wireless Remote Control does not operate the <i>Dimmer with IR Receiver</i> .	<ul style="list-style-type: none"> • Batteries are installed incorrectly. • Batteries are dead.

Technical and Sales Assistance

If you need assistance, call the toll-free **Lutron Technical Assistance Hotline**. Please provide exact model number when calling.
(800) 523-9466 (U.S.A., Canada and the Caribbean)

Other countries call:

Tel: (610) 282-3800 International 1 610 282-3800
Fax: (610) 282-3090 International 1 610 282-1243
Visit our Web site at www.lutron.com

Warranty

Lutron will, at its option, repair or replace any unit that is defective in materials or manufacture within one year after purchase. For warranty service, return unit to place of purchase or mail to Lutron at 7200 Suter Rd., Coopersburg, PA 18036-1299, postage pre-paid.

This warranty is in lieu of all other warranties, express or implied, and the implied warranty of merchantability is limited to one year from purchase. This warranty does not cover the cost of installation, removal or reinstallation, or damage resulting from misuse, abuse, or damage from improper wiring or installation. This warranty does not cover incidental or consequential damages. This warranty gives you specific legal rights, and you may have other rights which vary from state to state. Some states do not allow the exclusion or limitation of incidental or consequential damages, or limitation on how long an implied warranty may last, so the above limitations may not apply to you.

This product is covered under one or more of the following U.S. patents: 5,248,919; 5,399,940; DES 353,798; DES 391,924 and corresponding foreign patents. U.S. and foreign patents pending. Lutron, Claro and Spacer are registered trademarks and FASS and "The Hand" are trademarks of Lutron Electronics Co., Inc. Energizer is a registered trademark of the Eveready Battery Company, Inc. © 1998 Lutron Electronics Co., Inc.

Lutron Electronics Co., Inc.
7200 Suter Road
Coopersburg, PA 18036-1299, U.S.A.
Made and printed in the U.S.A. 8/98 P/N 030-482 Rev. C



Installation Instructions for Single-Location Control

Please Leave for Occupant

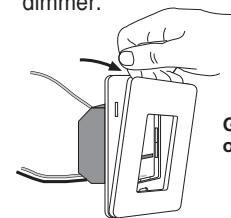
Read all instructions completely before installation.

Important Notes

- 1. Caution:** To avoid overheating and possible damage to other equipment, do not use to control receptacles, fluorescent lighting, motor-operated or transformer-supplied appliances.
2. Install in accordance with all national and local electrical codes.
3. Do not paint dimmer.
4. Do not use where total bulb wattage is less than 40 Watts or greater than 600 Watts.
5. Dimmer may not work with dioded lamps (Sylvania Designer 16™ or Philips PAR-16™).
6. Operate between 0°C (32°F) and 40°C (104°F).
7. Dimmer may feel warm to the touch during normal operation.
8. Recommended wallbox depth is 2 1/2" minimum.



Remove Lutron Claro® wallplate from *Dimmer with IR Receiver* before installing. This will expose dimmer mounting holes and prevent wallplate damage while installing dimmer.



Grasp and pull front piece of wallplate.



"The Hand"™ Infrared Wireless Remote Control will operate any *Spacer Dimmer with IR Receiver*. If additional *Spacer Dimmers with IR Receivers* are installed in a room, they may all respond simultaneously to the signal from "The Hand" Infrared Wireless Remote Control.

For Dimming Incandescent/ Halogen Light Bulbs

Package: SP-600-HT

Includes:

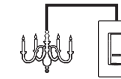
SP-600 Dimmer with IR Receiver
SP-HT Infrared Wireless Remote Control

120VAC, 60Hz
40W minimum, 600W maximum

Installation Contents

Single-Location Installation

Installing one *Dimmer with IR Receiver* to control light(s) from a single location.



Page 2

Operation

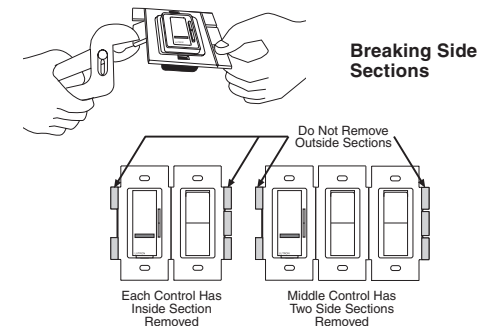
Using the *Dimmer with IR Receiver* and "The Hand" Infrared Wireless Remote Control.



Page 3

Multigang Installations

Lutron Claro wallplates are available in 2-, 3- and 4-gang versions. Purchase Claro multigang wallplates separately. When combining dimmers with other controls in the same wallbox, remove all inner side sections prior to wiring. Using pliers, bend side sections up and down until they break off.



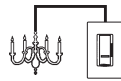
Reduction of the *Dimmer with IR Receiver* load capacity is required. See table below.

	No sides removed	1 side removed	2 sides removed
SP-600	600W	500W	400W

LUTRON®

LUTRON®

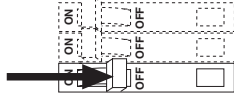
Single-Location Installation



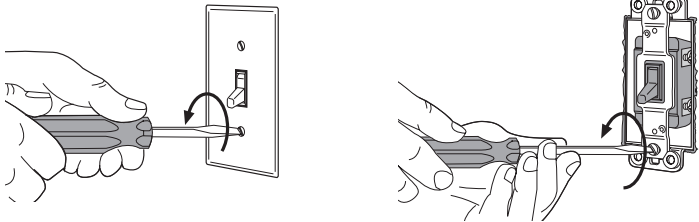
For installations combining dimmers with other controls in a wallbox, refer to Multigang Installations on page 1 before beginning.

✓ **Check off Steps as completed.**

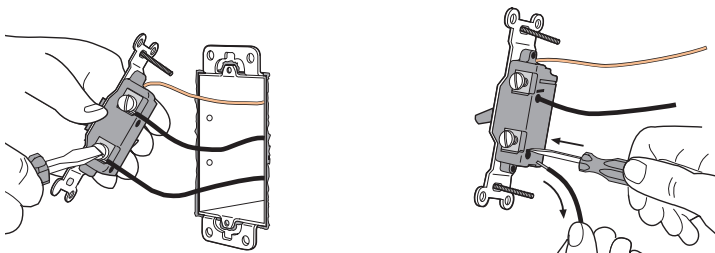
Step 1 Turn power off at circuit breaker panel or remove fuse from fusebox.



Step 2 Remove wallplate. Pull switch from wall.



Step 3 Disconnect wires.



Terminal Screws:
Turn screw to loosen.

Backwired:
Insert screwdriver.
Pull out wire.

Important Wiring Information

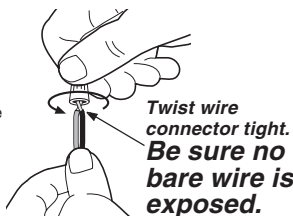
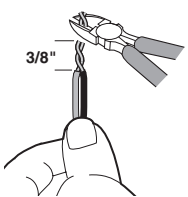
Twist wires and trim.

When making wire connections, twist and trim wires to the proper length as indicated below:

3/8"

Strip length: 3/8" for 14, 16, or 18 gauge

Note: Wire connectors provided are suitable for copper wire only. For aluminum wire, consult an electrician. Use to join the following combinations:
One 14 gauge with one 16 or 18 gauge.

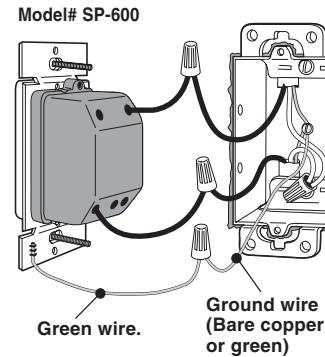


Twist wire connector tight. Be sure no bare wire is exposed.

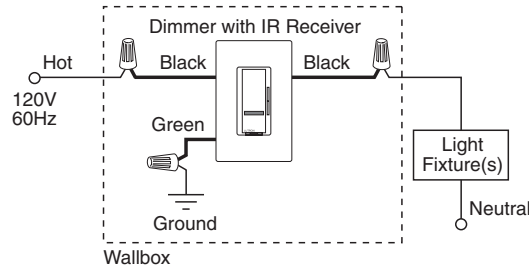
Step 4 Wire the *Dimmer with IR Receiver*.

Using the wire connectors provided:

- Connect the *Dimmer with IR Receiver* green ground wire to the green or bare copper ground wire in the wallbox. If there is no ground wire in your wallbox, consult an electrician.
- Connect one *Dimmer with IR Receiver* black wire to either of the wires removed from the switch.
- Connect the other *Dimmer with IR Receiver* black wire to the remaining wire removed from the switch.

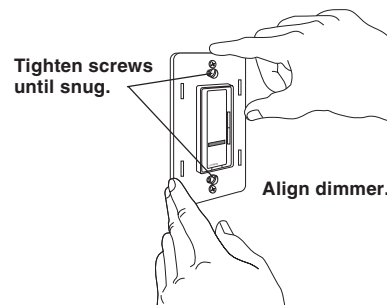


Wiring Diagram



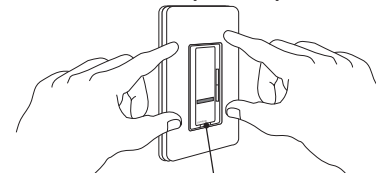
Step 5 Mount and align dimmer. Replace Claro wallplate.

Tighten screws until snug.



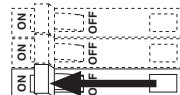
Align dimmer.

Snap on wallplate.



Slide FASS switch to the right.

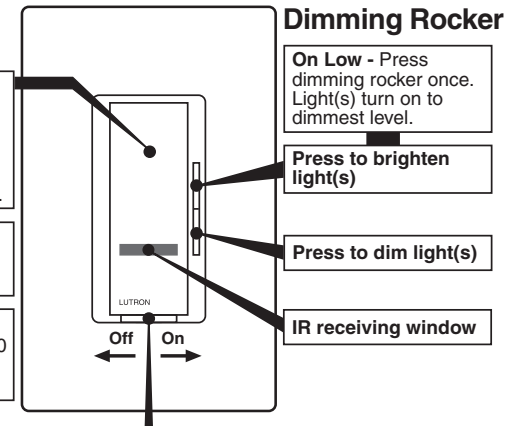
Step 6 Turn power ON.



Operation of Dimmer with IR Receiver

Tap Switch Options

- Tap once - Light(s) adjust smoothly to level set by dimming rocker.
- Tap again - Light(s) adjust smoothly to off.
- Tap twice quickly - Light(s) adjust rapidly to full.
- Press & hold for 2 seconds - Activates 10 second gradual fade-to-off.



Dimming Rocker

- On Low - Press dimming rocker once. Light(s) turn on to dimmest level.
- Press to brighten light(s)
- Press to dim light(s)
- IR receiving window

IMPORTANT NOTICE:

FASS™ - Front Accessible Service Switch - to replace bulb, power may be conveniently removed by sliding FASS switch to the left. For any procedure other than routine lamp replacement, power must be disconnected at the main electrical panel.

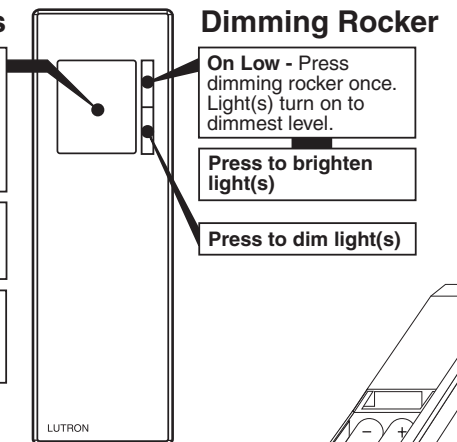
Power Failure Memory - Light(s) return to level prior to power failure.

Operation of "The Hand" Infrared Wireless Remote Control

Point "The Hand" at the *Spacer Dimmer with IR Receiver*, then use the Tap Switch and Dimmer Rocker as shown below. "The Hand" Infrared Wireless Remote Control range is 30 feet line of sight.

Tap Switch Options

- Tap once - Light(s) adjust smoothly to level set by dimming rocker.
- Tap again - Light(s) adjust smoothly to off.
- Tap twice quickly - Light(s) adjust rapidly to full.
- Press & hold for 2 seconds - Activates 10 second gradual fade-to-off.



Dimming Rocker

- On Low - Press dimming rocker once. Light(s) turn on to dimmest level.
- Press to brighten light(s)
- Press to dim light(s)

"The Hand" Infrared Wireless Remote Control is safe for use around baths and spas.

DO NOT SUBMERGE.

To Replace Batteries:

- Remove the battery cover.
- Replace with Energizer® brand batteries using 2 size AAA as shown. Do not use NiCad batteries.
- Replace the battery cover.

