

Single-Pole Incandescent Dimmer

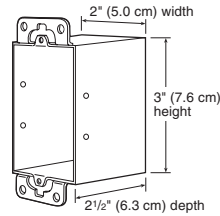
Rated at 220–240V~, 50/60Hz; 600 or 1000 Watt.

Important Notes

- CAUTION:** Use only with permanently installed 220–240V~ incandescent fixtures. To avoid overheating and possible damage to other equipment, do not use to control receptacles, low-voltage lighting, fluorescent lighting fixtures, motor-driven appliances, or transformer-supplied appliances.
- Dimmer may feel warm to the touch during normal operation.
- If a bare copper or green ground connection is not available in the wallbox, contact a licensed electrician for installation.
- For new installations, install a test switch before installing the dimmer.
- Install in accordance with all national and local electrical codes.
- Use a U.S.A. size wallbox when installing this product (refer to "Wallbox Installation" below and Step 4).
- Use for loads ranging from 80W up to maximum rating of dimmer. Do not exceed wattage listed on unit label.

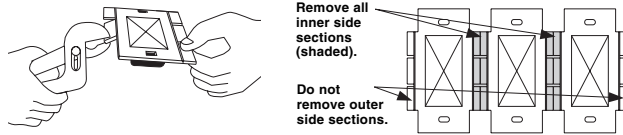
Wallbox Installation

The use of a U.S.A. size wallbox is required for installation of this product. It is recommended that the minimum dimensions for the wallbox be a 2" (5.0 cm) width x 3" (7.6 cm) height x 2 1/2" (6.3 cm) depth as shown at right.



Multi-Unit Installations

When combining controls in a wallbox, remove all inner side sections prior to wiring (see below). Use pliers to bend side section up and down until it breaks off. Repeat for each side section to be removed.



Technical Assistance

If you have questions concerning the installation or operation of this product, call the **Lutron Technical Assistance Hotline:**

(800) 523-9466 (U.S.A., Canada, and the Caribbean)
 Other countries call (610) 282-3800
 Fax (610) 282-3090

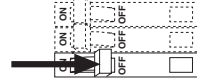
Warranty

Lutron will, at its option, repair or replace any unit that is defective in materials or manufacture within one year after purchase. For warranty service, return unit to place of purchase or mail to Lutron at 7200 Suter Rd., Coopersburg, PA 18036-1299, U.S.A., postage prepaid. This warranty is in lieu of all other warranties, express or implied, and the implied warranty of merchantability is limited to one year from purchase. This warranty does not cover the cost of installation, removal or reinstallation, or damage resulting from misuse, abuse, or damage from improper wiring or installation. This warranty does not cover incidental or consequential damages. This product may be covered by one or more of the following U.S. patents: 4,835,816; 5,207,317; DES 364-141 and corresponding foreign patents. Lutron, Diva and Skylark are registered trademarks of Lutron Electronics Co., Inc. © 1997 Lutron Electronics Co., Inc.

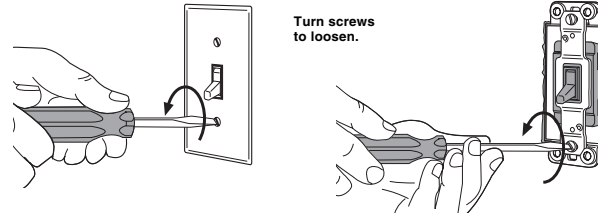
Installation

For installations involving more than one control in a wallbox, refer to Multi-Unit Installations before beginning.

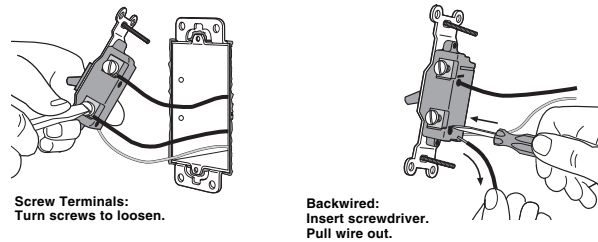
Step 1 WARNING: Turn power OFF at circuit breaker or remove fuse.



Step 2 Remove switch mounting screws. Pull switch from wall.



Step 3 Disconnect switch wires.



Step 4 Install a U.S.A. size wallbox (see "Important Notes").

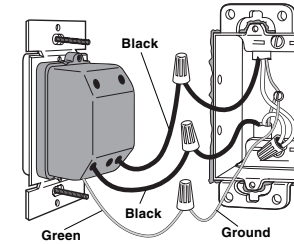
Step 5 Prepare wires. Trim or strip all wires to the proper length as indicated below when completing Step 6.

Strip length:
 1/2" (1.3 cm) for 1.5 mm² or 2.5 mm² wire

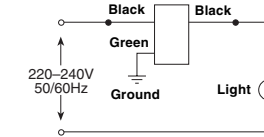
Note: Wire connectors provided are suitable for **copper wire only**. For aluminum wire, consult an electrician. Use to join the following combinations:
One or two 1.5 mm² or 2.5 mm² wires with one 1.5 mm² or 2.5 mm² wire.



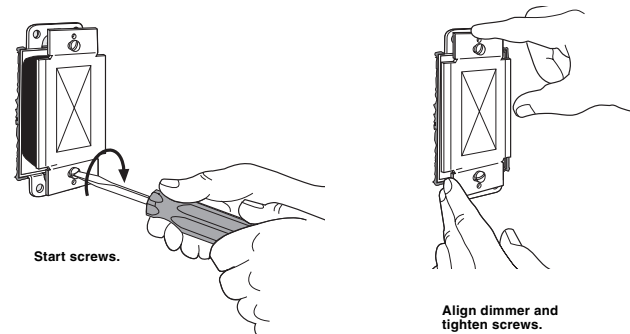
Step 6 Wiring a dimmer.



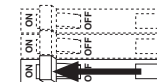
- Connect the green dimmer ground wire to the green or bare copper ground wire in the wallbox.
- Connect one of the black dimmer wires to one of the wires removed from the switch.
- Connect the remaining black dimmer wire to the other wire removed from the switch.



Step 7 Mount and align dimmer. Install wallplate.



Step 8 Turn power ON.



单路白炽灯调光器

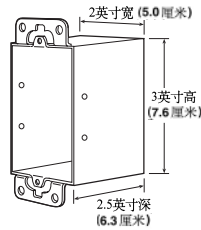
规格为 220-240 伏交流电，50/60 赫兹，600 瓦或 1000 瓦

重要注释

- 注意：**只能用于固定安装的 220-240 伏白炽灯具，为避免温度过热及其对其它设备造成损坏，请勿用于控制灯座、低电压灯具、日光灯具、马达驱动器具、或由变压器供电的电器。
- 于正常操作时，调光器会有微热产生。
- 如果在墙壁接线盒中没有裸铜线或绿色接地线，需请有执照的电工安装。
- 在新的安装设备中，先装一个开关作测试，然后才调上调光器。
- 请根据国家和当地的电气法规安装。
- 安装本产品时，请使用美国尺寸的墙壁接线盒（参看下面和第四步的“墙壁接线盒安装说明”）。
- 使用的功率范围为 80 瓦至调光器的最大额定功率。请勿超过装置名牌上所规定的功率。

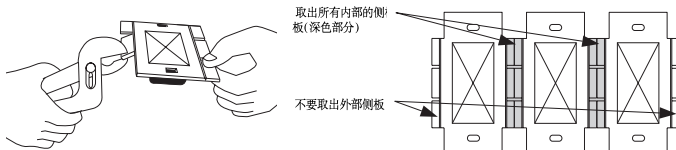
墙壁接线盒安装说明

安装本产品需要用美国尺寸的墙壁接线盒。我们建议，接线盒的起码尺寸为 2 英寸宽（5.0 厘米）、3 英寸高（7.6 厘米）、2.5 英寸深（6.3 厘米），如右图所示。



多单元式安装

当多个调光器结合安装于一个墙壁接线盒时，连线前，请先拨走所有内隔板（见下图）。用老虎钳将各侧板上下弯曲，直至断裂开，以取出所有内隔板。



技术支持

如果您对安装和操作这产品有任何问题，请拨打 Lutron 技术援助热线电话：

(800) 523-9466 (美国，加拿大和加勒比地区)

其它国家请拨打 (610) 282-3800

传真 (610) 282-3090

保用单

从购买后的一年之内，如果发现该产品在材料和生产上有问题，Lutron 会根据自己的选择修理或替换。在保用期内，可将产品退还给商店或邮寄给 Lutron，地址为：7200 Suter Rd., Coopersburg, PA 18036-1299，邮资预付。

本保用单取代其它所有标明或暗指保用单。商品的保用期限只限于购买之后的一年。本保用单不保安装费用、调光器取下或再安装费用，以及不保由使用和滥用造成的损坏，也不保由接线不当和安装不当引起的损坏。本保用单不保事故性损坏或者事后引起的损坏。

本保用单为您提供特定的合法权益，您也可能有其它合法权益，各州不一。有些州不允许排除或限制事故性或事后引起的损坏，也不能限制保用单的有效时间。因此上述的限制也许对您不适用。

本产品可以受美国专利 168,884 保护，或以下一个或多个美国专利的保护：4,835,816；5,207,317；DES 364-141，也可以受相应的外国专利保护。

Lutron, Diva, Skylark 是 Lutron Electronics Co., Inc. 的注册商标。

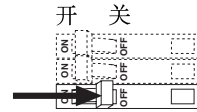
© 1997 Lutron Electronics Co., Inc.

LUTRON.

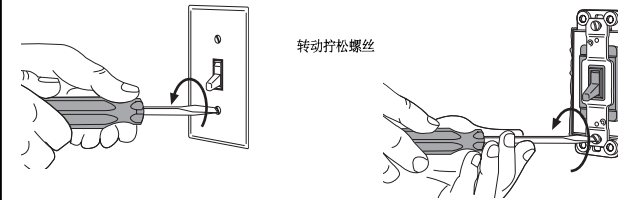
安装

如安装多个调光器于一个墙壁接线盒上，请在动手前，参阅多单元式安装说明。

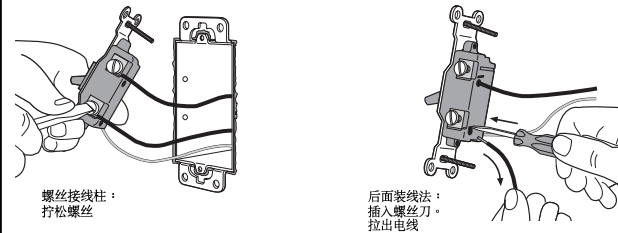
第一步 警告：请将电路断路器切断，或者取下保险丝。



第二步 取下开关的安装螺丝。将开关从墙上拔出。



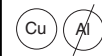
第三步 松开开关电线。



第四步 安装美国尺寸墙壁接线盒（请参阅“重要注释”）。

第五步 准备好电线。如下图所示，在完成第六步时，将所有的线头修剪或剥开到适当长度。

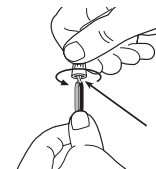
剥开长度：
1.5 或 2.5 平方毫米 电线 — 1.3



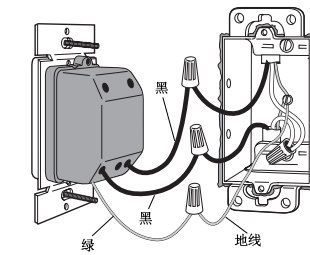
注：所配备的接线柱只适用于铜线。如是铝线，请教电工。请使用下列搭配：

— 或两根 1.5 平方毫米电线与一根 1.5 或 2.5 平方毫米电线

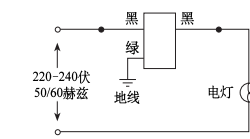
捻紧线头然后修剪



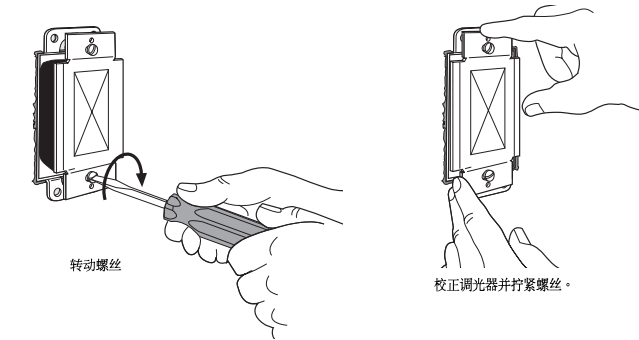
第六步 连接调光器。



- 将调光器的绿线地线连接到墙壁接线盒中的绿线或裸铜地线上。
- 将调光器的其中一根黑线接到开关上松开的其中一根电线上。
- 将调光器的另一根黑线接到开关上松开的另一根电线上。



第七步 安装并校正调光器位置，安装饰板。



第八步 接通电源

