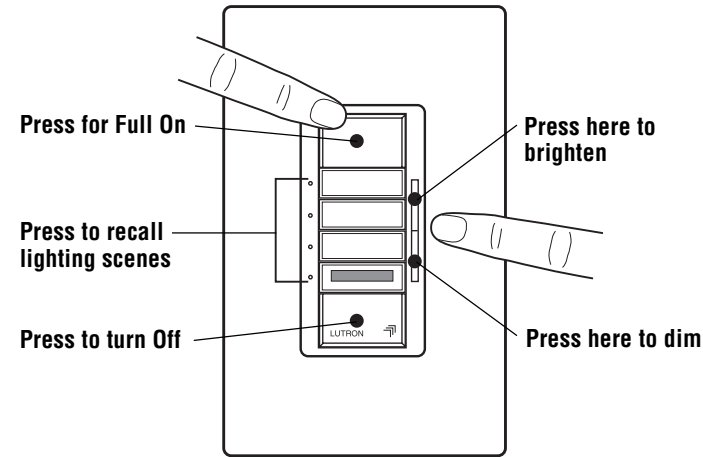


## Operation of Wall Mounted Master Control

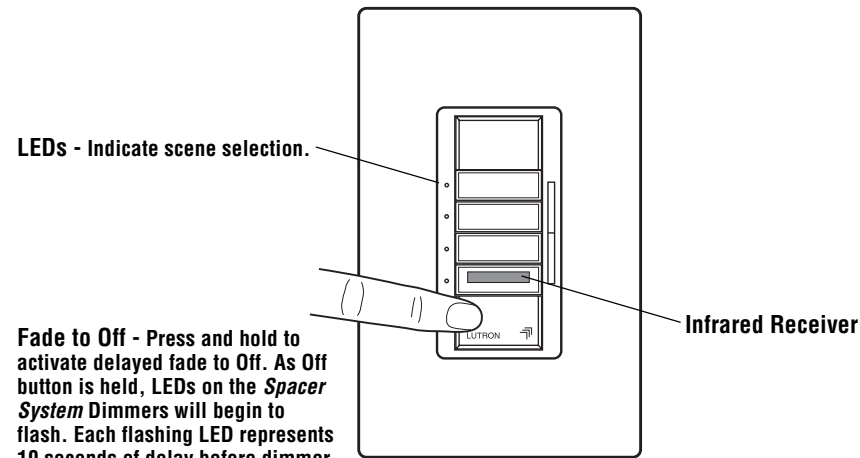
### Basic Operation



### Easy Scene Programming—Just Like a Car Radio

1. Adjust *Spacer System* Dimmers to desired light levels.
2. Press and hold corresponding scene button until **Spacer System Dimmer LEDs** flash (approximately 4 seconds). Scene is set.
3. Repeat steps 1 and 2 for all scenes.
4. Press to recall lighting scenes.

### Advanced Features



**Fade to Off** - Press and hold to activate delayed fade to Off. As Off button is held, LEDs on the *Spacer System* Dimmers will begin to flash. Each flashing LED represents 10 seconds of delay before dimmer fades to Off (up to 60 seconds).

### Troubleshooting

Symptom	Possible Cause
<i>Spacer System</i> dimmers operate normally but do not respond to the Wall Mounted Master Control.	<ul style="list-style-type: none"> <li>• Ensure power to the Wall Mounted Master Control is ON.</li> <li>• Check connections of traveler wires at Wall Mounted Master Control and IR Blaster.</li> </ul>
<i>Spacer System</i> Infrared Hand-held Remote Control does not select scenes.	<ul style="list-style-type: none"> <li>• The IR wireless remote is not a <i>Spacer System</i> Remote (models SPS-4IT or SPS-FSIT).</li> <li>• Transmitter batteries are installed incorrectly.</li> <li>• Transmitter batteries are low.</li> </ul>
<i>Spacer System</i> Wall Mounted Master Control scene LEDs do not light when scene buttons are pressed.	<ul style="list-style-type: none"> <li>• Ensure power to the Wall Mounted Master Control is ON.</li> </ul>

### Worldwide Technical and Sales Assistance

If you have questions concerning the installation or operation of this product, call the **Lutron Technical Support Center**. Please provide exact model number when calling.  
 (800) 523-9466 (U.S.A., Canada, and the Caribbean)  
 Other countries call (610) 282-3800  
 Fax (610) 282-3090  
 Visit our web site at [www.lutron.com](http://www.lutron.com)

**LUTRON®**

### Limited Warranty

Lutron will, at its option, repair or replace any unit that is defective in materials or manufacture within one year after purchase. For warranty service, return unit to place of purchase or mail to Lutron at 7200 Suter Rd., Coopersburg, PA 18036-1299, postage pre-paid.  
**THIS WARRANTY IS IN LIEU OF ALL OTHER EXPRESS WARRANTIES, AND THE IMPLIED WARRANTY OF MERCHANTABILITY IS LIMITED TO ONE YEAR FROM PURCHASE. THIS WARRANTY DOES NOT COVER THE COST OF INSTALLATION, REMOVAL OR REINSTALLATION, OR DAMAGE RESULTING FROM MISUSE, ABUSE, OR DAMAGE FROM IMPROPER WIRING OR INSTALLATION. THIS WARRANTY DOES NOT COVER INCIDENTAL OR CONSEQUENTIAL DAMAGES. LUTRON'S LIABILITY ON ANY CLAIM FOR DAMAGES ARISING OUT OF OR IN CONNECTION WITH THE MANUFACTURE, SALE, INSTALLATION, DELIVERY, USE, REPAIR OR REPLACEMENT OF THE UNIT SHALL NEVER EXCEED THE PURCHASE PRICE OF THE UNIT.**  
 This warranty gives you specific legal rights, and you may have other rights which vary from state to state. Some states do not allow the exclusion or limitation of incidental or consequential damages, or limitations on how long an implied warranty lasts, so the above limitation may not apply to you.  
 This product is covered under one or more of the following U.S. patents: 4,835,343; 5,248,919; 5,399,940; 5,909,087; 6,169,377; 6,300,727; 6,380,696; D306,853; D310,349; D316,847; D317,593; D353,798; D370,663; D391,924; D439,220; and corresponding foreign patents. U.S. and foreign patents pending. Lutron, Claro and Spacer are registered trademarks and FASS, The Hand, and Spacer System are trademarks of Lutron Electronics Co., Inc.  
 © 2003 Lutron Electronics Co., Inc.

Lutron Electronics Co., Inc.  
 7200 Suter Road  
 Coopersburg, PA 18036-1299, U.S.A.  
 Made and printed in the U.S.A. 10/03 P/N 030-717 Rev. B

English

P/N 030-717



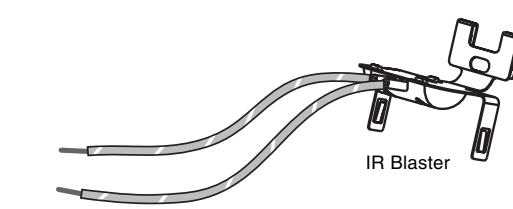
## Installation Instructions for Remote Wall Mounted Master Control

**Please Leave for Occupant**

Read all instructions completely before installation.

### Important Notes

1. Install in accordance with all national and local electrical codes.
2. For use with Lutron *Spacer System* wall mounted dimmers **only**.
3. The SPS-5WCR requires a live (hot), neutral, ground, and a pair of traveler wires in the wallbox.
4. The SPS-5WCR does not control lights directly and is not intended as a replacement for a switch or dimmer.
5. Do not paint front or back of control.
6. Operate between 0°C (32°F) and 40°C (104°F).
7. Required wallbox depth is 3 1/2" minimum.
8. Clean with a **soft damp cloth only**. Do not use any chemical cleaners.



"The Hand"™ (SP-HT) Infrared Wireless Remote Control **will not** operate the *Spacer System* Remote Wall Mounted Master Control. Use *Spacer System* infrared hand-held remote controls only (models SPS-4IT, SPS-FSIT).

**LUTRON®**

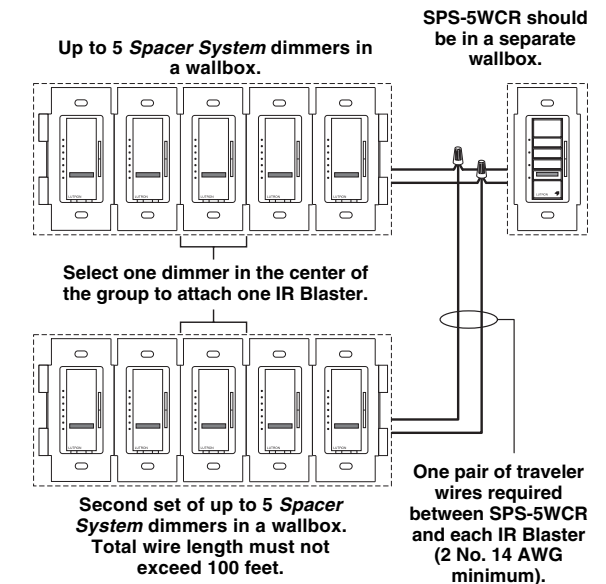
For Use With *Spacer System™* Dimmers Only

## SPS-5WCR Remote Wall Mounted Master Control

120/127VAC, 60Hz, 0.5A

### Installation Notes

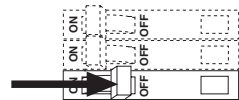
1. **Important:** Dimmers to be used together to create scenes must be installed in a wallbox with no dividers or barriers between dimmers. Select a dimmer in the center of the group to attach the IR Blaster.
2. When installing a *Spacer System* Wall Mounted Master Control (SPS-5WCR) it should be installed in its own single gang wallbox. Up to two wallboxes of *Spacer System* dimmers can be controlled using the two IR Blasters included. Two conductor wire is required between this wallbox and each *Spacer System* dimmer's wallbox. See wiring requirements on the next page before starting installation.



# Remote Wall Mounted Master Control Installation

✓ **Check off Steps as completed.**

**Step 1** Turn power off at circuit breaker panel or remove fuse from fusebox.

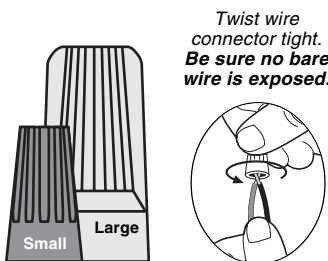


## Important Wiring Information

When making wire connections, follow the recommended strip lengths and combinations for the supplied wire connectors. All wires on the SPS-5WCR and IR Blaster are 18 AWG. **Note:** Wire connectors provided are suitable for **copper wire only**. For aluminum wire, consult an electrician.

**Small:** Strip insulation 3/8" for 14 AWG wire  
Strip insulation 1/2" for 16 or 18 AWG wire  
Use to join one 14 AWG supply wire with one 16 or 18 AWG control wire.

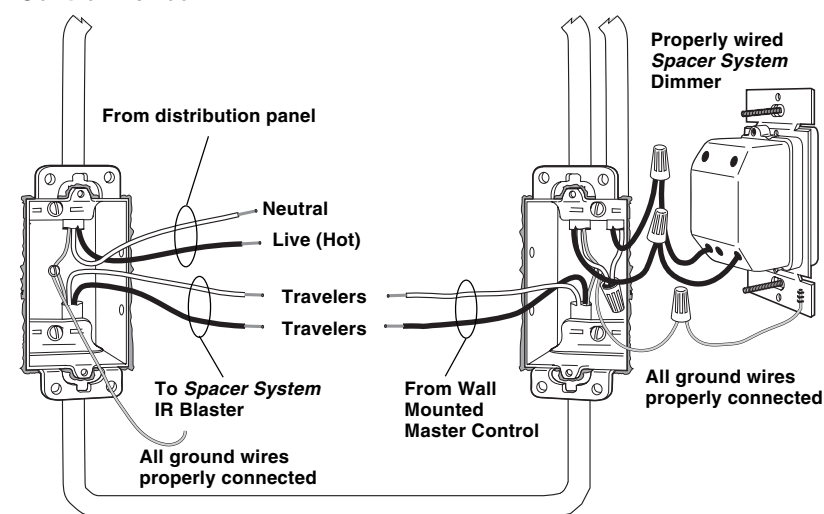
**Large:** Strip insulation 1/2" for 10, 12 or 14 AWG wire  
Strip insulation 5/8" for 16 or 18 AWG wire  
Use to join one or two 12 or 14 AWG supply wires with one 10, 12, 14, 16, or 18 AWG control wire.



**Step 2** Verify the following wires are in the wallbox for installation, if not install the required wires.

If the following wires are not available in your wallbox, you must run the needed wires or contact a licensed electrician for installation. All wiring must be in accordance with national and local electrical codes.

**Wall Mounted Master Control Wallbox**      **Spacer System Dimmer Wallbox**



**Step 3** Wire the Wall Mounted Master Control.

Using the wire connectors provided:

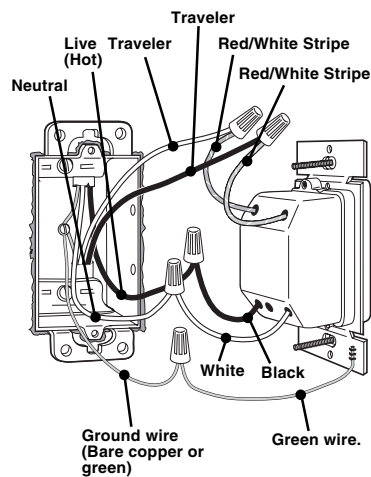
**3a** **Connect the ground wire:** Connect the **green** ground wire to the **green** or **bare copper** ground wire in the wallbox.

**3b** **Connect the black wire:** Connect the **black** wire on the Wall Mounted Master Control to the **LIVE (Hot)** wire coming from the distribution panel.

**3c** **Connect the white wire:** Connect the **white** wire on the Wall Mounted Master Control to the **NEUTRAL** wire coming from the distribution panel.

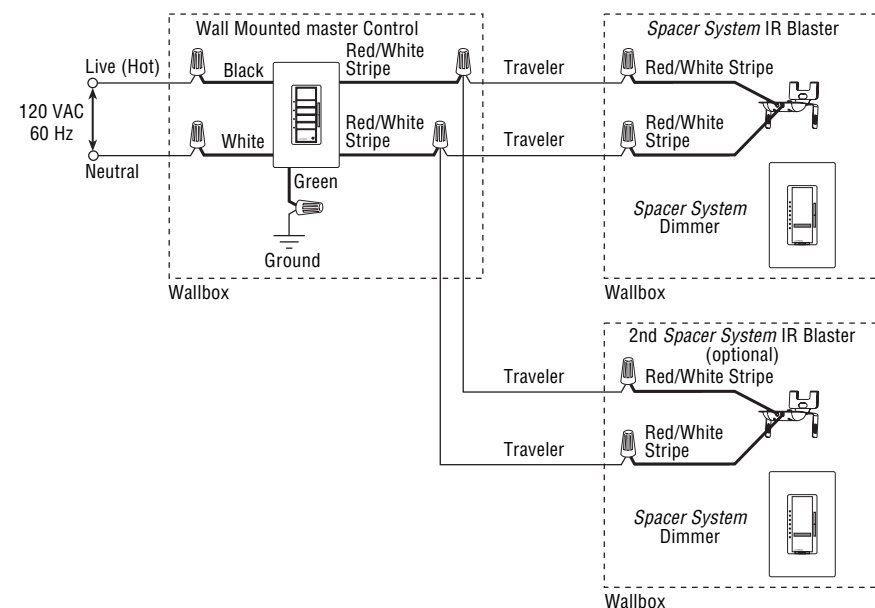
**3d** **Connect the red/white stripe wire:** Connect one of the **red/white stripe** wires on the Wall Mounted Master Control to one of the traveler wires going to the wallbox the *Spacer System* Dimmer is located in.

**3e** **Connect the red/white stripe wire:** Connect the other **red/white stripe** wire on the Wall Mounted Master Control to the other traveler wire going to the wallbox the *Spacer System* Dimmer is located in.



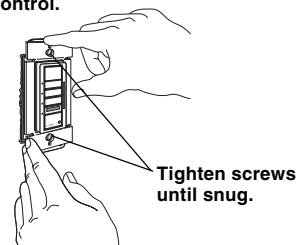
**Note:** Actual wire location on control may be different than illustration.

## Wiring Diagram



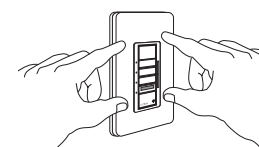
**Step 4** Mount and align the Wall Mounted Master Control. Install *Claro* wallplate (purchased separately).

Align control.

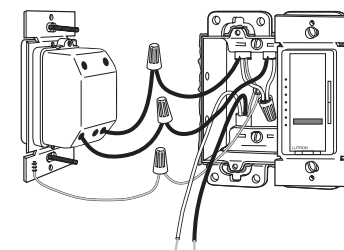


Tighten screws until snug.

Attach *Claro* wallplate adapter. Snap on wallplate.



**Step 5** Select one *Spacer System* dimmer in the center of the group to attach one IR Blaster. Remove this dimmer from the wallbox. **DO NOT DISCONNECT THE WIRES FROM THE DIMMER.**

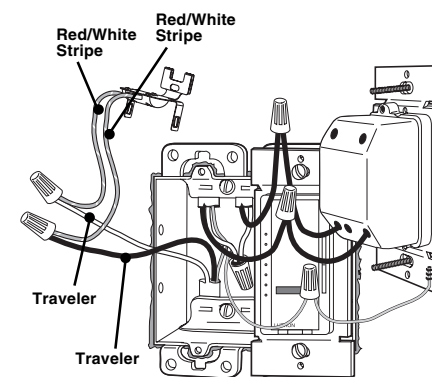


**Step 6** Wire the IR Blaster.

Using the wire connectors provided:

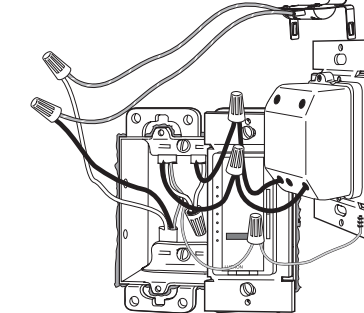
**6a** **Connect the red/white stripe wire:** Connect one of the **red/white stripe** wires on the IR Blaster to one of the traveler wires coming from the Wall Mounted Master Control.

**6b** **Connect the red/white stripe wire:** Connect the other **red/white stripe** wire on the IR Blaster to the remaining traveler wire coming from the Wall Mounted Master Control.

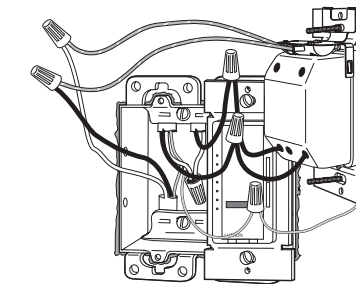


**Step 7** Attach the IR Blaster to the *Spacer System* dimmer.

Remove the top mounting screw and slide the IR Blaster onto the TOP of dimmer.

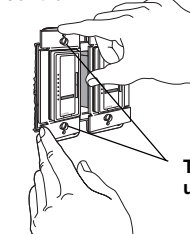


Be sure that the IR Blaster is securely fastened to the dimmer. Replace mounting screw.



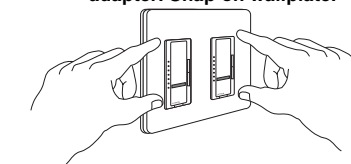
**Step 8** Mount and align the *Spacer System* dimmer. Install *Claro* wallplate (purchased separately).

Align control.



Tighten screws until snug.

Attach *Claro* wallplate adapter. Snap on wallplate.



**Step 9** Turn power ON.

