

**Electronic Low-Voltage Smart Dimmer**  
FAELV-500M (500 W) 120 V~ 60 Hz

**Accessory Dimmer**  
FA-AD (8.3 A Maximum) 120 V~ 60 Hz

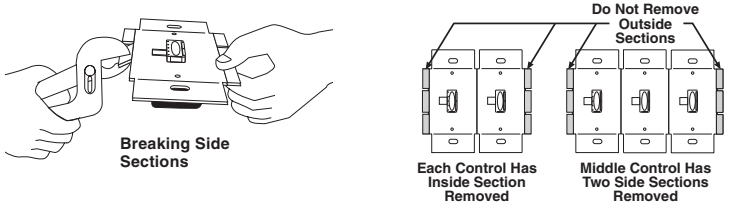
**Important Notes**

Please read before installing.

- Caution:** To avoid overheating and possible damage to other equipment, do not use to control receptacles, fluorescent lighting fixtures, motor-operated or transformer-supplied appliances.
- Use only to control the primary side of a solid-state (electronic) low-voltage transformer, or in combination with incandescent lamps. **Do not use to control core and coil (magnetic) low-voltage transformers.**
- Install in accordance with all national and local electrical codes.
- When no "grounding means" exist within the wallbox then the NEC, 2002, Article 404.9 allows a dimmer without a grounding connection to be installed as a replacement, as long as a plastic, noncombustible wallplate is used. For this type of installation, cap or remove the green ground wire on the dimmer and use an appropriate wallplate such as Lutron's Fassada™ series wallplates.
- Do not paint Smart Dimmers or Accessory Dimmers.
- Faedra™ Smart Dimmers are not compatible with standard 3-way/4-way switches, for use only with Accessory Dimmers.
- Accessory Dimmers can not be used individually and must be used in conjunction with a faedra™ Smart Dimmer in a 3-way/4-way application.
- In any 3-way/4-way circuit use only one Smart Dimmer with up to 9 Accessory Dimmers.
- Maximum wire length between the Smart Dimmer and the last Accessory Dimmer is 250 feet (76 m).
- Do not use where total lamp wattage is greater than wattage indicated on unit label.
- Some fixture manufacturers do not recommend dimming their solid-state transformers. To determine if a fixture may be dimmed, consult Lutron or the fixture manufacturer.
- This control is overload protected. If the rated wattage is exceeded, power to the circuit will shut off until the control cools. If this occurs, remove excess load from the circuit.
- This product requires a neutral wire in the wallbox. If no neutral wire is present, contact a licensed electrician for installation.
- In multi-phase applications, use a separate neutral for each phase containing a dimmed circuit.
- Operate between 0 °C (32 °F) and 40 °C (104 °F).
- It is normal for Smart Dimmers to feel warm to the touch during operation.
- Recommended wallbox depth is 2 1/2" (63 mm) minimum.
- Clean dimmers with a soft damp cloth only.** Do not use any chemical cleaners.

**Multigang Installations**

When combining controls in the same wallbox, remove all inner side sections prior to wiring (see below). Using pliers, bend side sections up and down until they break off. Repeat for each side section to be removed. Refer to the derating chart below for maximum dimmer capacity.



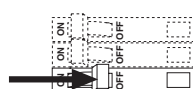
**Derating Chart**

Type of Dimmer	Maximum Load		
	No Sides Removed	1 Side Removed	2 Sides Removed
<b>Electronic Low-Voltage</b> 500 W	500 W	450 W	400 W

**Installation**

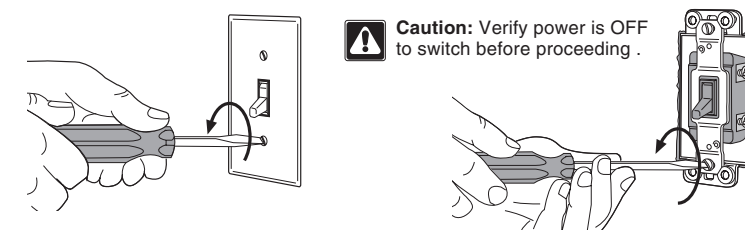
**1 Turning OFF power.**

- Turn power OFF at circuit breaker (or remove fuse).



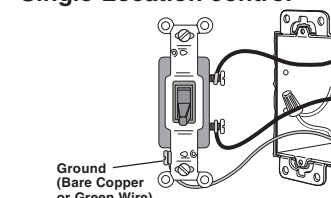
**2 Removing wallplates and switches.**

- Remove wallplate and switch mounting screws.
- Carefully remove switches from wall (**do not remove wires**).



**3 Identifying the type of circuit.**

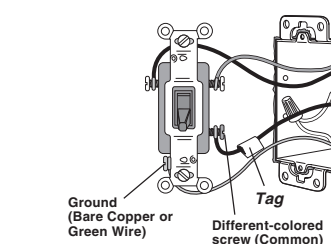
**Single-Location control**



**One switch controlling a light fixture.** This switch will be a single-pole. The switch will have insulated wires connected to two screws of the same color plus a green ground screw.

**Caution:** If a neutral wire is not present, contact a licensed electrician for installation.

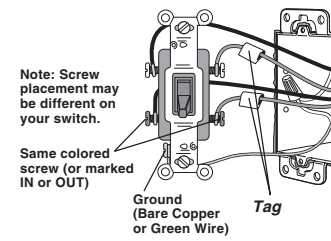
**Two-Location control**



**Two switches controlling a light fixture.** Both switches will be 3-way. Each switch will have insulated wires connected to three screws plus a green ground screw. One of these wires is connected to a screw of a different color (not green) or labeled COMMON. **TAG** this wire on both switches to identify when wiring.

**Caution:** If a neutral wire is not present (at the load-side location), contact a licensed electrician for installation.

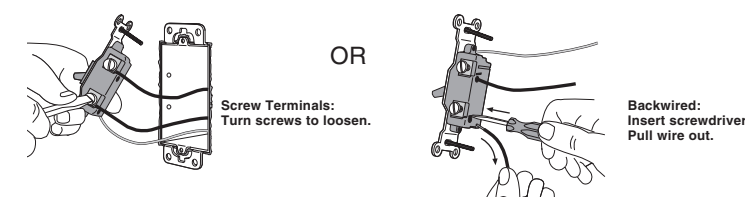
**Three-Location control**



**Three switches controlling a light fixture.** Two switches will be 3-way and one will be a 4-way. **Tag** the two 3-way switches as in the Two-Location diagram above. The 4-way switch will have insulated wires connected to four screws plus a green ground screw. **TAG** the two same color insulated wires which are connected to opposite colored screws.

**4 Disconnecting switch wires.**

- Carefully disconnect switch wires.



**Important Wiring Information**

When making wire connections, follow the recommended strip lengths and combinations for the supplied wire connector below. **Note:** Wire connectors provided are suitable for **copper wire only**. For aluminum wire, consult an electrician.

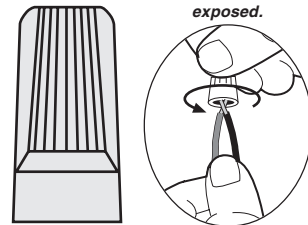
**Recommended Strip Length:**  
Strip insulation 1/2" (13 mm) for 10, 12 or 14 AWG wire



Strip insulation 5/8" (16 mm) for 16 or 18 AWG wire



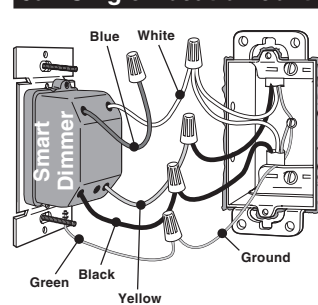
Use to join one or two 12 or 14 AWG supply wires with one 10, 12, 14, 16, or 18 AWG control wire.



**5 Wiring the Dimmers.**

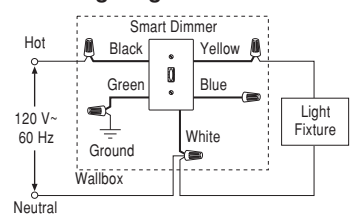
- For installations involving more than one control in a wallbox, refer to the section on Multigang Installations before beginning.

**5a - Single-Location control**

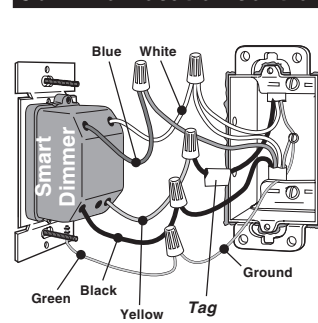


- Wiring the Smart Dimmer:**
- Connect the **green** Smart Dimmer ground wire to the green or bare copper ground wire in the wallbox.
  - Connect the **black** Smart Dimmer wire to the live (hot) wire coming from the distribution panel.
  - Connect the **yellow** Smart Dimmer wire to the lighting load.
  - Connect the **white** Smart Dimmer wire to neutral.
  - Cap off the **blue** Smart Dimmer wire. It is not used in a single-pole circuit.

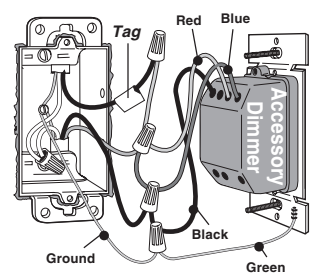
**Reference Wiring Diagram:**



**5b - Two-Location control**

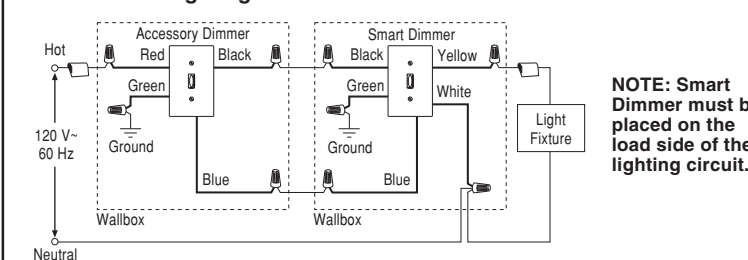


- Wiring the Smart Dimmer:**
- Connect the **green** Smart Dimmer ground wire to the green or bare copper ground wire in the wallbox.
  - Connect the **yellow** Smart Dimmer wire to the tagged wire removed from the switch. This wire must be going to the lighting load.
  - Connect the **white** Smart Dimmer wire to neutral.
  - Connect the **black** Smart Dimmer wire to either of the remaining wires removed from the switch.
  - Connect the **blue** Smart Dimmer wire to the remaining wire removed from the switch (note wire color).



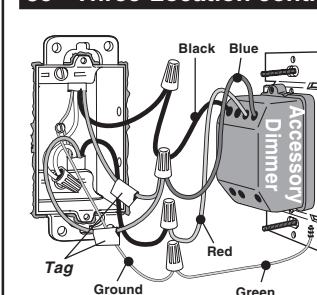
- Wiring the Accessory Dimmer (FA-AD):**
- Connect the **green** Accessory Dimmer ground wire to the green or bare copper ground wire in the wallbox.
  - Connect the **red** Accessory Dimmer wire to the tagged wire removed from the switch.
  - Connect the **blue** Accessory Dimmer wire to the same color wire as the blue Smart Dimmer wire noted above.
  - Connect the **black** Accessory Dimmer wire to the remaining wire removed from the switch.

**Reference Wiring Diagram:**



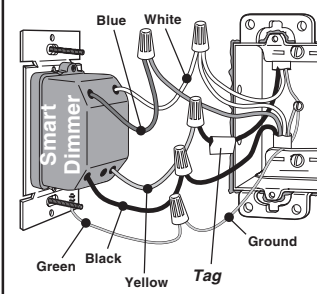
**NOTE:** Smart Dimmer must be placed on the load side of the lighting circuit.

**5c - Three-Location control or more**



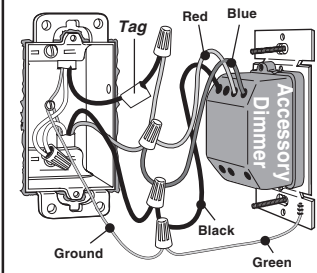
**Wiring a Accessory Dimmer (FA-AD):** (replaces the 4-way switch(es))

- Connect the **green** Accessory Dimmer ground wire to the green or bare copper ground wire in the wallbox.
- Connect the **blue** Accessory Dimmer wire to both of the tagged wires (noting their color) removed from the 4-way switch.
- Connect the **black** Accessory Dimmer wire to one of the remaining wires removed from the switch.
- Connect the **red** Accessory Dimmer wire to the remaining wire removed from the switch.



**Wiring the Smart Dimmer: (replaces a 3-way switch)**

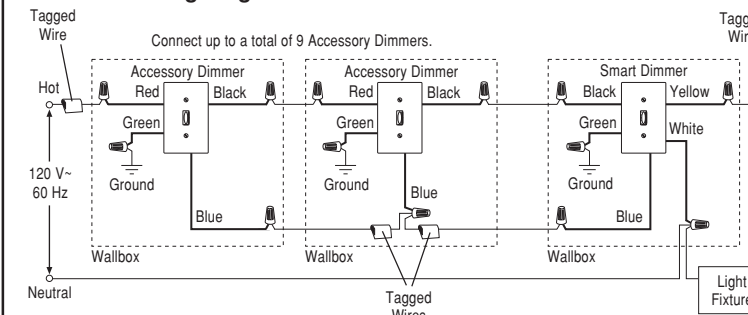
- Connect the **green** Smart Dimmer ground wire to the green or bare copper ground wire in the wallbox.
- Connect the **yellow** Smart Dimmer wire to the tagged wire removed from the switch. This wire must be going to the lighting load.
- Connect the **white** Smart Dimmer wire to neutral.
- Connect the **blue** Smart Dimmer wire to the same color wire as the blue Accessory Dimmer wire noted above.
- Connect the **red** Smart Dimmer wire to the remaining wire removed from the switch.



**Wiring another Accessory Dimmer (FA-AD): (replaces a 3-way switch)**

- Connect the **green** Accessory Dimmer ground wire to the green or bare copper ground wire in the wallbox.
- Connect the **red** Accessory Dimmer wire to the tagged wire removed from the switch.
- Connect the **blue** Accessory Dimmer wire to the same color wire as the blue Accessory Dimmer wire noted above.
- Connect the **black** Accessory Dimmer wire to the remaining wire removed from the switch.

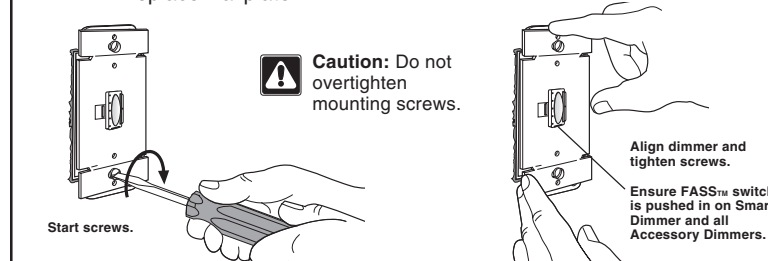
**Reference Wiring Diagram:**



**NOTE:** Smart Dimmer must be placed on the load side of the lighting circuit.

**6 Mounting Smart Dimmer and Accessory Dimmer(s) to wallbox.**

- Form wires carefully into the wallbox, mount and align dimmer.
- Replace wallplate.



**7 Turning ON power.**

- Turn power ON at circuit breaker (or replace fuse).

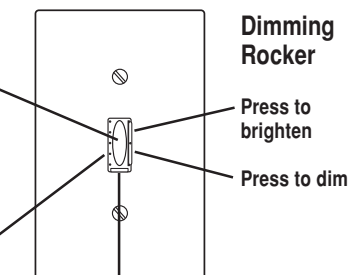
**Operation**

**Basic Operation**

**Tap Button Options**

- Tap once when unit is off** - Lights brighten smoothly to preset intensity.
- Tap once when unit is on** - Lights dim smoothly to off.
- Tap twice quickly** - Lights brighten rapidly to full intensity.

**LED light level indicators** (not available on Accessory Dimmers)



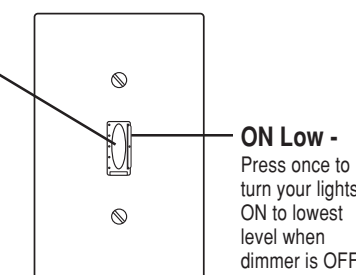
**IMPORTANT NOTICE:**

FASS™ - Front Accessible Service Switch - To replace bulb, power may be conveniently removed by pulling FASS™ switch out on the Smart Dimmer or any Accessory Dimmer. **For any procedure other than routine lamp replacement, power must be disconnected at the main electrical panel.**

**Advanced Features**

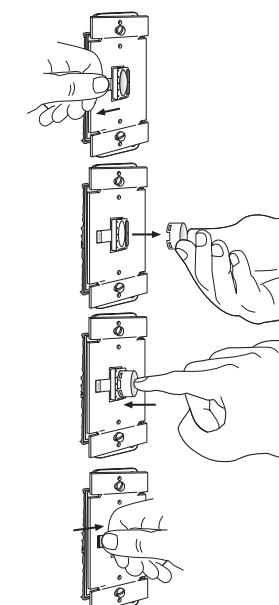
**Fade to OFF** - Press and hold to activate delayed fade to OFF. As tap button is held, LEDs will begin to flash. The first flashing LED represents a 10 second fade to OFF. Each additional flashing LED represents 15 seconds of delay before dimmer fades to OFF (up to 60 seconds).

**Locked-in Preset** - Tap 4 times quickly to set the current light level as the "Locked-in" preset (the LEDs will blink twice indicating the preset was locked). When the dimmer is turned ON via this button it will always go to this "Locked-in" light level rather than the previous light level. To unlock the preset, tap the button 4 times quickly (the LEDs will blink three times indicating the preset was unlocked).



**To Change Tap Button**

- Turn power OFF at circuit breaker or remove fuse.
- Unlock the tap button by sliding the release clip to the left.
- Remove the tap button from the dimmer. (To aid in the removal, firmly place a piece of tape on the tap button, gently pull on the tape to begin sliding the tap button out of the dimmer until it can be grasped by your thumb and index finger.)
- Insert new tap button into dimmer.
- Lock the new tap button by sliding the release clip to the right.
- Turn power ON at circuit breaker or replace fuse.



**Troubleshooting**

Symptom	Possible Cause
Light does not turn ON and no LEDs turn ON.	<ul style="list-style-type: none"> <li>Front Accessible Service Switch (FASS™) on Smart Dimmer or Accessory Dimmers is pulled out.</li> <li>Breaker is OFF or tripped.</li> <li>Wiring error. Call the Lutron Technical Support Center at +1-800-523-9466</li> </ul>
Light does not turn ON but LEDs do turn ON.	<ul style="list-style-type: none"> <li>Light bulb(s) burned out.</li> <li>Front Accessible Service Switch (FASS™) on Smart Dimmer is pulled out and black and yellow wires are reversed.</li> </ul>
Lights flicker with low-voltage loads.	<ul style="list-style-type: none"> <li>Load type being used is not electronic low-voltage.</li> </ul>
Lights cycle OFF and ON.	<ul style="list-style-type: none"> <li>Lamp wattage is greater than wattage rating of the Dimmer.</li> </ul>
Light turns ON and Smart Dimmer works, but Accessory Dimmer does not work.	<ul style="list-style-type: none"> <li>Blue wire on Smart Dimmer not connected to the blue wire on the Accessory Dimmer.</li> <li>Smart Dimmer not wired on load side of lighting circuit.</li> <li>Black and yellow wires on the Smart Dimmer are reversed.</li> </ul>
Tap button cannot be removed.	<ul style="list-style-type: none"> <li>Release clip has not been entirely pushed to the left.</li> </ul>

**? Technical Assistance**

If you have questions concerning the installation or operation of this product, call the **Lutron Technical Support Center**. Please provide exact model number when calling.

U.S.A. and Canada (24 hrs/7days) +1-800-523-9466 Fax +1-610-282-3090  
Other countries 8am - 8pm ET +1-610-282-3800

<http://www.lutron.com>

**Limited Warranty**

Lutron will, at its option, repair or replace any unit that is defective in materials or manufacture within one year after purchase. For warranty service, return unit to place of purchase or mail to Lutron at 7200 Suter Rd., Coopersburg, PA 18036-1299, postage pre-paid. **THIS WARRANTY IS IN LIEU OF ALL OTHER EXPRESS WARRANTIES, AND THE IMPLIED WARRANTY OF MERCHANTABILITY IS LIMITED TO ONE YEAR FROM PURCHASE. THIS WARRANTY DOES NOT COVER THE COST OF INSTALLATION, REMOVAL OR REINSTALLATION, OR DAMAGE RESULTING FROM MISUSE, ABUSE, OR DAMAGE FROM IMPROPER WIRING OR INSTALLATION. THIS WARRANTY DOES NOT COVER INCIDENTAL OR CONSEQUENTIAL DAMAGES. LUTRON'S LIABILITY ON ANY CLAIM FOR DAMAGES ARISING OUT OF OR IN CONNECTION WITH THE MANUFACTURE, SALE, INSTALLATION, DELIVERY, OR USE OF THE UNIT SHALL NEVER EXCEED THE PURCHASE PRICE OF THE UNIT.** This warranty gives you specific legal rights, and you may have other rights which vary from state to state. Some states do not allow the exclusion or limitation of incidental or consequential damages, or limitation on how long an implied warranty may last, so the above limitations may not apply to you. This product may be covered under one or more of the following U.S. patents: 5,038,081; 5,248,919; 5,399,940; 5,510,679; 5,637,930; 5,798,581; D477,573 and corresponding foreign patents. U.S. and foreign patents pending. Lutron is a registered trademark and Faedra, FASS, and Fassada are trademarks of Lutron Electronics Co., Inc. NEC is a registered trademark of the National Fire Protection Association, Quincy, Massachusetts. © 2005 Lutron Electronics Co., Inc.

Lutron Electronics Co., Inc.  
7200 Suter Road  
Coopersburg, PA 18036-1299, U.S.A.  
Made and printed in the U.S.A. 1/05 P/N 030-776 Rev. B

Atenuador electrónico inteligente de bajo voltaje FAELV-500M (500 W) 120 V~ 60 Hz

Atenuador Secundario FA-AD (1 000 W Máximo) 120 V~ 60 Hz

Notas importantes

Por favor leer antes de instalar.

- 1. Precaución: Para evitar el sobrecalentamiento y posibles daños a otros equipos...
2. Úsese solamente para el control del lado primario de un transformador de estado sólido...
3. Instállese de acuerdo con todos los códigos eléctricos nacionales y locales.
4. Si en la caja de embutir no hay acceso a una conexión de tierra...
5. No pinte los atenuadores Smart Dimmer ni los Atenuadores Secundarios...
6. Los atenuadores Smart Dimmer de faedra™ no son compatibles con interruptores estándar de 3 ó 4 vías...
7. Los Atenuadores Secundarios no pueden usarse individualmente y es obligatorio usarlos con un atenuador Smart Dimmer de faedra™ en aplicaciones de 3 ó 4 vías...
8. En un circuito de 3 ó 4 vías, úsese sólo un atenuador Smart Dimmer con hasta 9 Atenuadores Secundarios...
9. La máxima longitud de cable entre el atenuador Smart Dimmer y el último Atenuador Secundario debe ser de 76 m (250 pies)...
10. No debe usarse donde la potencia total de las lámparas exceda el número de vatios indicado en la etiqueta de la unidad...
11. Algunos fabricantes de lámparas no recomiendan el uso de atenuadores con sus transformadores de estado sólido...
12. Este control está protegido contra sobrecargas...
13. Este producto requiere un conductor neutro en la caja de pared...
14. En aplicaciones multifase, use un conductor neutro separado para cada fase...
15. Opérese a temperaturas entre 0 °C (32 °F) y 40 °C (104 °F)...
16. Es normal que el atenuador Smart Dimmer se sienta tibio al tocarlo durante su operación...
17. La profundidad mínima recomendada para la caja de pared es de 63 mm (2 1/2")...
18. Limpie el atenuador con un paño suave y húmedo solamente.

Instalaciones múltiples

Al combinar controles en la misma caja de pared, elimine las secciones laterales internas antes de efectuar las conexiones (véase abajo). Con la ayuda de alicates, doble las secciones laterales hacia arriba y hacia abajo hasta que se rompan.

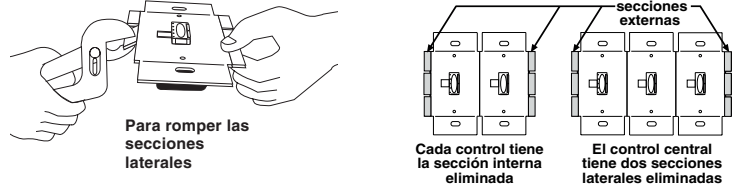


Tabla de descuento de potencia

Table with 4 columns: Tipo de atenuador, Carga máxima (Sin sección lateral eliminada, 1 sección lateral eliminada, 2 secciones laterales eliminadas), and values for 500 W, 450 W, 400 W.

Instalación

1 Para desconectar la alimentación.

- Desconecte la alimentación en el disyuntor del circuito (o quite el fusible).



2 Para desmontar la placa de cubierta y el interruptor.

- Extraiga los tornillos de montaje de la placa de cubierta y del interruptor.
Con cuidado, extraiga el interruptor de la pared (no desconecte los conductores).



3 Para identificar el tipo de circuito.

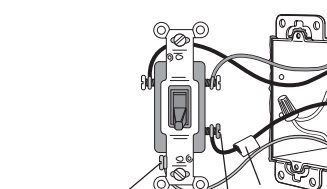
Controles de una sola ubicación



Un interruptor controlando una lámpara de iluminación. Este interruptor estándar será de un solo polo. El interruptor tendrá conductores aislados conectados a dos terminales de tornillo del mismo color más un tornillo verde de tierra.

- Si no hay conductor de neutro presente, consulte a un electricista capacitado para que lo instale.

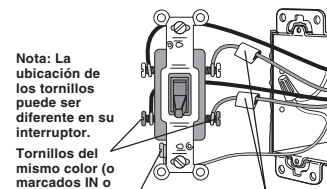
Controles de dos ubicaciones



Dos interruptores controlando una lámpara de iluminación. Ambos interruptores serán de 3 vías. Cada interruptor tendrá conductores aislados conectados a tres terminales de tornillo más un tornillo verde de tierra.

- Si no hay conductor neutro presente (en el sitio de la carga), consulte a un electricista capacitado para que lo instale.

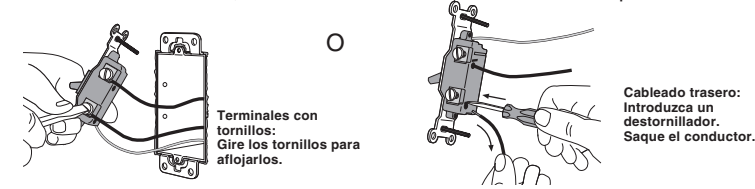
Controles de tres ubicaciones



Tres interruptores controlando una lámpara de iluminación. Dos interruptores serán de 3 vías y uno será de 4 vías. Rotule los dos interruptores de 3 vías igual que en el diagrama de dos ubicaciones anterior.

4 Para desconectar los conductores del interruptor.

- Con cuidado, desconecte los conductores en el interruptor.



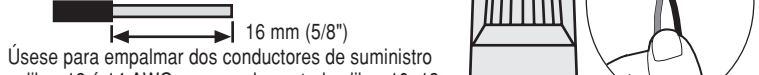
Información importante de cableado.

Al conectar cables, pele los conductores de acuerdo a las longitudes recomendadas y a las combinaciones de conectores suministradas a continuación. Nota: Los conectores suministrados son para uso con conductores de cobre solamente.

Longitud recomendada de peladura: Pele el aislamiento 13 mm (1/2") para conductores calibre 10, 12 ó 14 AWG.



Pelee el aislamiento 16 mm (5/8") para conductores calibre 16 ó 18 AWG.

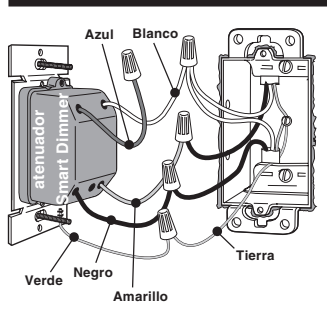


Úsese para empalmar dos conductores de suministro calibre 12 ó 14 AWG con uno de control calibre 10, 12, 14, 16 ó 18 AWG.

5 Cableado de los atenuadores.

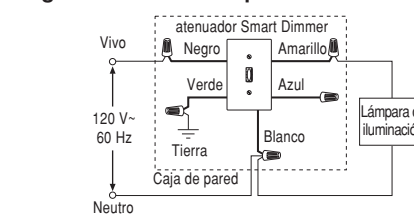
- Para instalaciones que tengan más de un control en una sola caja de pared, véase la sección de instalaciones múltiples antes de comenzar.

5a - Controles de una sola ubicación

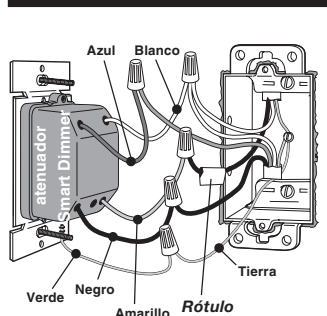


- Cableado del atenuador Smart Dimmer: Conecte el conductor verde de tierra del atenuador Smart Dimmer al conductor de tierra verde...
Cableado del atenuador Smart Dimmer (reemplaza a un interruptor de 3 vías): Conecte el conductor verde de tierra del atenuador Smart Dimmer al conductor de tierra verde...

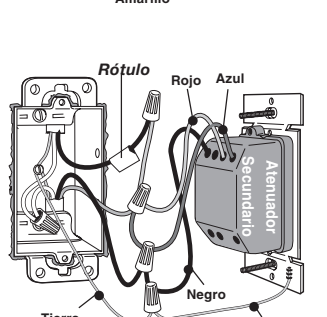
Diagrama de cableado para referencia:



5b - Controles de dos ubicaciones

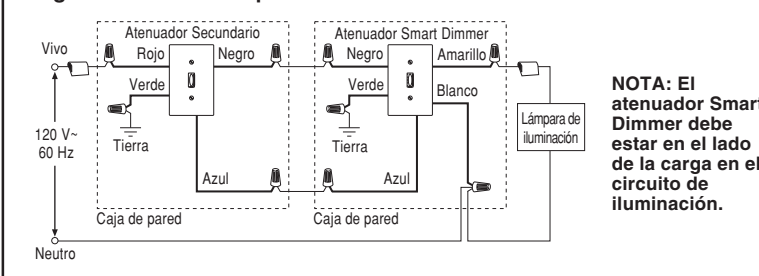


- Cableado del atenuador Smart Dimmer: Conecte el conductor verde de tierra del atenuador Smart Dimmer al conductor de tierra verde...
Cableado del Atenuador Secundario(FA-AD): Conecte el conductor verde de tierra del Atenuador Secundario al conductor de tierra verde...



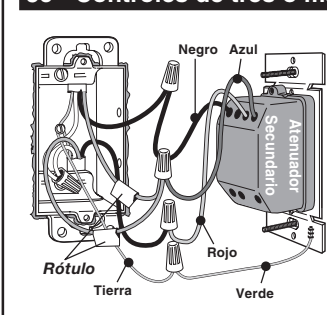
- Cableado del Atenuador Secundario(FA-AD): Conecte el conductor verde de tierra del Atenuador Secundario al conductor de tierra verde...
Conecte el conductor rojo del Atenuador Secundario al conductor rotulado que se desconectó del interruptor.

Diagrama de cableado para referencia:

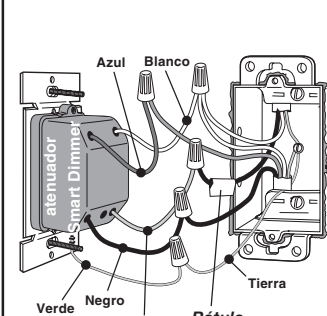


NOTA: El atenuador Smart Dimmer debe estar en el lado de la carga en el circuito de iluminación.

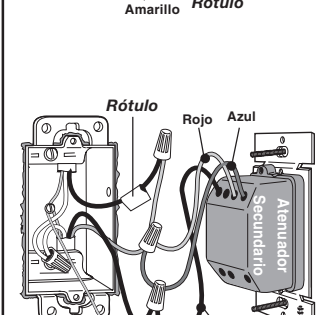
5c - Controles de tres o más ubicaciones



- Cableado del Atenuador Secundario (FA-AD): (reemplaza al(a) interruptor(es) de 4 vías) Conecte el conductor verde de tierra del Atenuador Secundario al conductor de tierra verde...
Cableado del atenuador Smart Dimmer (reemplaza a un interruptor de 3 vías): Conecte el conductor verde de tierra del atenuador Smart Dimmer al conductor de tierra verde...

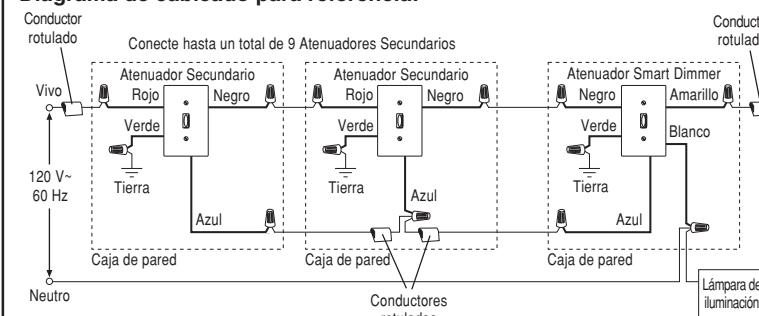


- Cableado de otro Atenuador Secundario (FA-AD): (reemplaza a un interruptor de 3 vías) Conecte el conductor verde de tierra del Atenuador Secundario al conductor de tierra verde...
Conecte el conductor rojo del Atenuador Secundario al conductor rotulado que se desconectó del interruptor.



- Cableado de otro Atenuador Secundario (FA-AD): (reemplaza a un interruptor de 3 vías) Conecte el conductor verde de tierra del Atenuador Secundario al conductor de tierra verde...
Conecte el conductor rojo del Atenuador Secundario al conductor rotulado que se desconectó del interruptor.

Diagrama de cableado para referencia:



NOTA: El atenuador Smart Dimmer debe estar en el lado de la carga en el circuito de iluminación.

6 Instalación del atenuador Smart Dimmer y de el(los) Atenuador(es) Secundario(s) en una caja de pared.

- Acomode los conductores cuidadosamente en la caja de pared, instale y alinee el atenuador.
Reemplace la cubierta de la caja de pared.



7 Para conectar la alimentación.

- Conecte la alimentación en el disyuntor del circuito (o ponga de nuevo el fusible).

Operación

Operación básica

Opciones por golpeteo de los botones

- Golpetear una vez cuando la unidad esté apagada - Las luces aumentarán gradualmente hasta la intensidad prefijada.
Golpetear una vez cuando la unidad esté encendida - Las luces se apagarán gradualmente.
Golpetear dos veces rápidamente - Las luces se iluminan instantáneamente a toda intensidad.

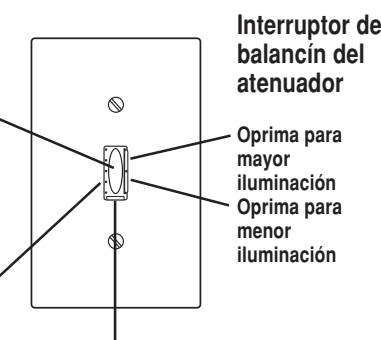
Diodos LED indicadores de nivel

AVISO IMPORTANTE: FASS™ - Interruptor de servicio accesible frontal (FASS) - Para reemplazar la bombilla, se puede desconectar la alimentación fácilmente sacando el interruptor FASS. Para otros procedimientos que no sean el reemplazo de la bombilla, se debe desconectar la alimentación en el panel eléctrico principal.

Características avanzadas

Desvanecer hasta apagar -

Presione y manténgalo así para activar el desvanecimiento con demora hasta apagar. Al mantener el botón oprimido los diodos LED comienzan a destellar. El destello del primer diodo LED significa desvanecimiento de 10 segundos a apagado.



AVISO IMPORTANTE: FASS™ - Interruptor de servicio accesible frontal (FASS) - Para reemplazar la bombilla, se puede desconectar la alimentación fácilmente sacando el interruptor FASS. Para otros procedimientos que no sean el reemplazo de la bombilla, se debe desconectar la alimentación en el panel eléctrico principal.

Encendido bajo -

Presione una vez, estando el atenuador apagado, para encender las luces a su mínima iluminación.

Nivel prestablecido -

Golpee rápidamente cuatro veces para fijar el nivel actual de iluminación como el "Nivel prestablecido" (los diodos LED destellarán dos veces para indicar que se ha almacenado el valor).

Para reemplazar el botón

1 Desconecte la alimentación en el disyuntor del circuito o quite el fusible.

2 Suelte el botón deslizando la presilla de retención hacia la izquierda.

3 Extraiga el botón del atenuador. (Para ayudar a sacar el botón, péguelo un pedazo de cinta adhesiva y tire de la cinta suavemente, deslizando el botón hasta que salga del atenuador y sea posible sujetarlo con los dedos.)

4 Introduzca el botón nuevo en el atenuador.

5 Sujete el botón nuevo deslizando la presilla de retención hacia la derecha.

6 Conecte la alimentación en el disyuntor del circuito o ponga de nuevo el fusible.

Reparación de Averías

Table with 2 columns: Síntoma and Causa posible. Lists common issues like 'La luz no enciende y ningún diodo LED se ilumina' and their causes like 'Se ha extraído el Interruptor de servicio accesible frontal (FASS™) en el atenuador Smart Dimmer'.

Asistencia técnica

Si tiene alguna pregunta sobre la instalación o la operación de este producto, llame al Centro de Apoyo Técnico de Lutron. Favor proporcionar el número exacto de modelo cuando llame.

- E.U.A. y Canadá (24 horas/7 días a la semana) +1-800-523-9466
Otros países de 8 a.m. a 8 p.m. Hora del Este +1-610-282-3800

Garantía limitada

(Válido solamente en Estados Unidos, Canadá, Puerto Rico, y el Caribe.) Lutron, a su elección, reparará o reemplazará cualquier unidad que tenga defectos en materiales o en manufactura dentro de un año después de la compra. Para servicio de garantía, devuelva la unidad al lugar de la compra o envíela por correo a Lutron al 7200 Suter Rd., Cooperburg, PA 18036-1299, con servicio postal pre-pagado.