

# English

## Incandescent / 120 V Halogen Dimmer

Rated at 120 V - 60 Hz

Models:

600 W	1000 W
DL-600PL	DL-100PL
DL-603PL	DL-103PL
DV-600P	DV-100P
DV-603P	DV-103P
DVSC-600P	DVSC-103P
DVSC-603P	DVSC-103P
DVW-600P	LG-100P
DVW-603P	LG-103P
LG-600P	LX-100PL
LG-603P	LX-103PL
LX-600PL	
LX-603PL	

### Important Notes

- Please read before installing.
- CAUTION:** Use only with permanently-installed incandescent or 120 V halogen fixtures. To avoid overheating and possible damage to other equipment, do not use to control receptacles, fluorescent lighting fixtures, motor-driven appliances, or transformer-supplied appliances.
  - Install in accordance with all national and local electrical codes.
  - Only one dimmer can be used in a 3-way circuit.
  - When no "grounding means" exist within the wallbox then the NEC, 2005, Article 404-9 allows a dimmer without a grounding connection to be installed as a replacement, as long as a plastic, noncombustible wallplate is used. For this type of installation, cap or remove the green ground wire on the dimmer and use an appropriate wallplate such as Lutron's Claro or Satin Colors™ series wallplates.
  - For new installations, install a test switch before installing the dimmer.
  - Protect dimmer from dust and dirt when painting or spackling.
  - Recommended minimum load is 40 W.
  - It is normal for the dimmer to feel warm to the touch during operation.
  - Clean dimmer with a soft damp cloth only. Do not use any chemical cleaners.

### Multigang Installations

When installing more than one control in the same wallbox, it may be necessary to remove all inner side sections prior to wiring (see diagram). If pre-installed, remove the Lutron wallplate and wallplate adapter from dimmer. Using pliers, bend side section up and down until it breaks off. Repeat for each side section to be removed. Removal of dimmer side sections reduces maximum load capacity. Refer to chart below for maximum dimmer capacity.

### Dimmer Capacity Chart

Dimmer Rating	No sides removed	1 side removed	2 sides removed
600 W	600 W	500 W	400 W
1000 W	1000 W	800 W	650 W

Each Section Has Inside Sections Removed

Do Not Remove Outside Sections

Middle Control Has Two Side Sections Removed

### Technical Assistance

If you have questions concerning the installation or operation of this product, call the Lutron Technical Support Center. Please provide exact model number when calling.

U.S.A. and Canada (24 hrs/7days)  
1-800-523-9466

Other countries (8am - 8pm ET)  
+1-610-282-3800

http://www.lutron.com

**Limited Warranty** (Valid only in U.S.A., Canada, Puerto Rico, and the Caribbean.)  
Lutron will, at its option, repair or replace any unit that is defective in materials or manufacture within one year after purchase. For warranty service, return unit to place of purchase or mail to Lutron at 7200 Suter Rd., Coopersburg, PA 18036-1299, postage pre-paid.  
**THIS WARRANTY IS IN LIEU OF ALL OTHER EXPRESS WARRANTIES, AND THE IMPLIED WARRANTY OF MERCHANTABILITY IS LIMITED TO ONE YEAR FROM PURCHASE. THIS WARRANTY DOES NOT COVER INCIDENTAL OR CONSEQUENTIAL DAMAGES, LUTRON'S LIABILITY ON ANY CLAIM FOR DAMAGES ARISING OUT OF OR IN CONNECTION WITH THE MANUFACTURE, SALE, INSTALLATION, DELIVERY, OR USE OF THE UNIT SHALL NEVER EXCEED THE PURCHASE PRICE OF THE UNIT.**

This warranty gives you specific legal rights, and you may have other rights which vary from state to state. Some states do not allow the exclusion or limitation of incidental or consequential damages, so the above limitations may not apply to you.

This product may be covered by one or more of the following U.S. patents: 4,835,343; 4,959,383; 5,207,317; 5,837,892; 6,065,398; D364,141; and corresponding foreign patents. Lutron, Claro, and Duo are registered trademarks of Lutron Electronics Co., Inc. NEC is a registered trademark of the National Fire Protection Association, Quincy, Massachusetts. © 2007 Lutron Electronics Co., Inc.

## LUTRON®

Lutron Electronics Co., Inc.  
7200 Suter Road  
Coopersburg, PA 18036-1299, U.S.A.  
Made and printed in U.S.A.  
3/07 PIN 030-912 Rev. B



030-912

• Easy-to-follow Instructions  
• Instrucciones Fáciles de Seguir



030-912

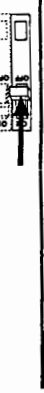
• Easy-to-follow Instructions  
• Instrucciones Fáciles de Seguir

Lutron Technical Support Center 1-800-523-9466 24 hrs / 7 days www.lutron.com

### Installation

#### 1 Turning OFF power.

- Turn power OFF at circuit breaker (or remove fuse).

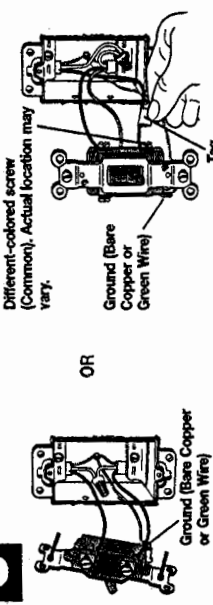


#### 2 Removing wallplate and switch.

- Remove wallplate and switch mounting screws.
- Carefully remove switch from wall (do not remove wires).

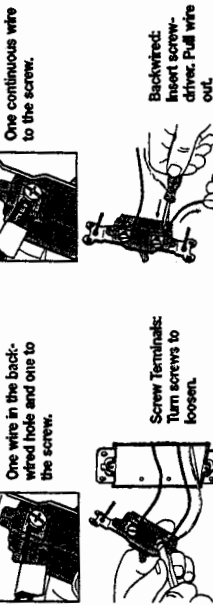


#### 3 Identifying the type of circuit.



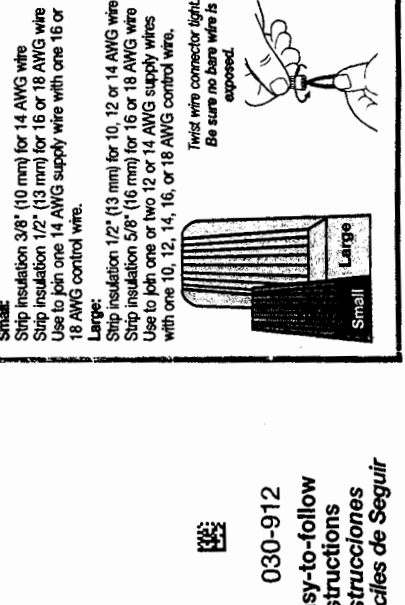
#### 4 Disconnecting switch wires.

- Carefully disconnect switch wires.
- Important Note:** Your wall switch may have two wires attached to the same screw (see illustrations below for examples). Tape these two wires together before disconnecting. Connect both wires to the dimmer wire in Step 5.



### Important Wiring Information

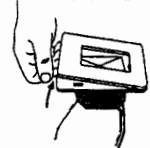
When making wire connections, follow the recommended strip lengths and combinations for the supplied wire connectors. Note: Wire connectors provided are suitable for copper wire only. For aluminum wire, consult an electrician.



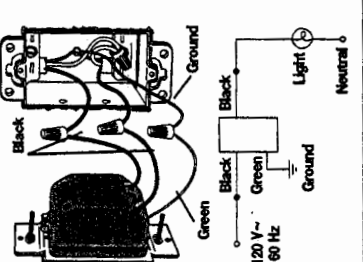
#### 5 Wiring the Dimmer.

- For installations involving more than one control in a wallbox, refer to the section on Multigang installations before beginning.

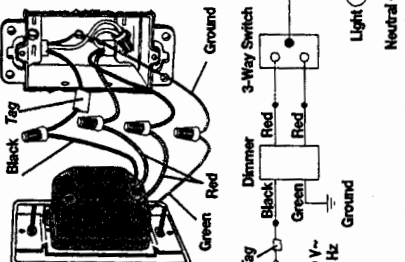
Depending on model number, the dimmer may include a Lutron Claro or Satin Colors wallplate. If so, please remove the front piece of the wallplate from the adapter before installing. This will expose dimmer mounting holes and prevent wallplate damage while installing dimmer.



#### 5a - Single-Pole Wiring



#### 5b - 3-Way Wiring

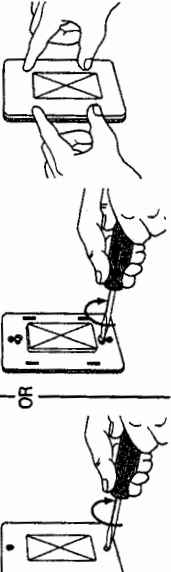


NOTE: Dimmer can be installed in either location. Wire location will vary by product. Reference wires by color, not location.

#### 6 Mounting dimmer to wallbox.

- Form wires carefully into the wallbox, mount and align dimmer.
- Install wallplate.

Attach standard wallplate.



#### 7 Turning ON power.

- Turn power ON at circuit breaker (or replace fuse).



