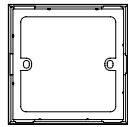


10 mm Trim Ring RN-TRRG

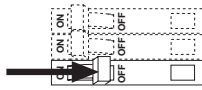
Installation



P/N 030-978

1 Turn the Power OFF

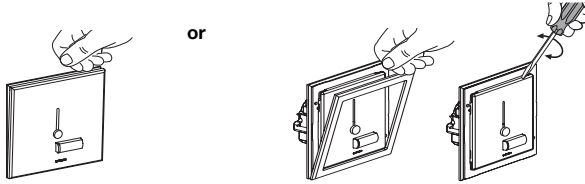
Turn the power OFF at the MCB (circuit breaker) or remove the fuse.



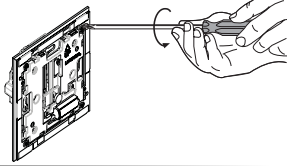
WARNING: Verify that power to the Dimmer is OFF before proceeding. Failure to turn power OFF could cause death or serious injury.

2 Prepare the Dimmer for the Trim Ring Installation

Remove the front plate. Remove the frame and then the front plate.

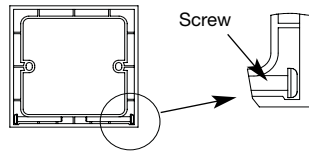


3 Remove the Adapter



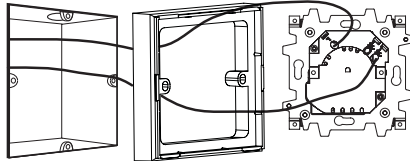
4 Prepare the Trim Ring for Installation

Remove both screws, and save them for step 6.



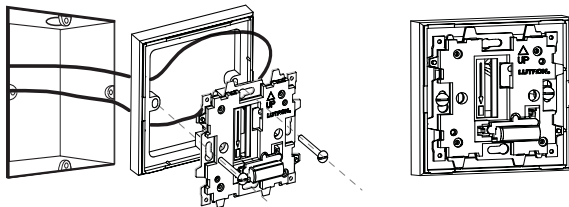
5 Wire the Dimmer

Thread the wires through the Trim Ring. To connect the wires, refer to the instructions provided with the Dimmer.



6 Install the Dimmer to the Backbox

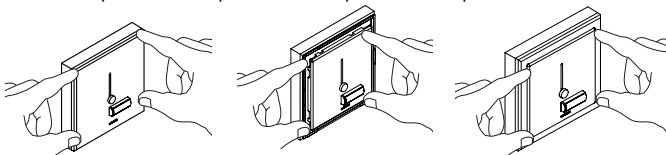
The Trim Ring must be oriented as shown when assembling the dimmer. Use the mounting screws from step 4 to install the dimmer to the backbox.



7 Snap On Front Plate

Snap on the front plate, and follow the remaining set-up instructions provided with the dimmer.

Snap on the front plate. or Snap on the front plate and then the frame.



8 Turn the Power ON

Turn the power ON at the MCB (circuit breaker) or replace the fuse.

Trim Ring Compatibility Chart

Lutron® Item #	Description	UK Backbox Depth	
		16 mm	25 mm
LSSI-501	Lyneo® STO	X	✓
LSDI-251	Lyneo Dual STO	X	✓
LNSI-502	Lyneo Preset	X	✓
LLSI-502	Lyneo Preset w/Status Light	X	✓
LLSM-502	Lyneo Preset w/Status Light	X	✓
LLDI-252	Lyneo Dual Preset w/Status Light	X	✓
RNSU-452	Rania® Digital Dimmer	✓	✓
RNDU-252	Rania Dual Digital Dimmer	X	✓
RDSU-452	Rania Accessory Dimmer	✓	✓
RDDU-252	Rania Dual Accessory Dimmer	X	✓
RISU-452	Rania IR Remote Control Digital Dimmer	✓	✓
RIDU-252	Rania IR Dual Remote Control Digital Dimmer	X	✓
RN-SS10	Single Switch	✓	✓
RN-DS10	Dual Switch	✓	✓
RN-IS10	Intermediate Switch	✓	✓

STO Slide to Off
 ✓ Compatible
 X Not Compatible

Technical Assistance

For questions concerning the installation or operation of this product, call **Lutron**. Please provide exact model number when calling.

Lutron EA LTD
 Tel: +44.(0)20.7702.0657
 Fax: +44.(0)20.7480.6899
www.lutron.com/europe

Freephone:
 U.K.: 0800.282.107
 Spain: 900.974.452
 France: 0800.90.12.18
 Germany: 00800.5887.6635
 Northern China: 10.800.712.1536
 Southern China: 10.800.120.1536
 Macau: 0800.401
 Hong Kong: 800.901.849
 Singapore: 800.120.4491
 Taiwan: 00.801.137.737
 Thailand: 001.800.120.665853
 Indonesia: 001.803.011.3994

Lutron GL LTD
 Tel: +65.6220.4666
 Fax: +65.6220.4333
www.lutron.com/asia

Limited Warranty

Lutron EA Ltd. ("Lutron EA") warrants each unit to be free from defects in material and workmanship and to perform under normal use and service. To the extent permitted by law, Lutron EA and Lutron Electronics Co. Inc. ("Lutron") make no warranties or representations as to the units except as set forth herein. This warranty shall run for a period of two years from the date of purchase and Lutron's obligations under this warranty are limited to remedying any defect, replacing any defective part or replacement (at Lutron EA's sole option) and shall be effective only if the defective unit is shipped to Lutron EA postage prepaid within 24 months after purchase of the unit. Repair or replacement of the unit does not affect the expiry date of the warranty. This warranty does not cover damage or deficiencies due to abuse, misuse, inadequate wiring or insulation or use or installation other than in accordance with instructions accompanying the unit.

To the extent permitted by law, neither Lutron EA nor Lutron shall be liable for any other loss or damage including consequential or special loss or damages, loss of profits, loss of income, or loss of contracts arising out of or relating to the supply of the unit or the use of the unit and the purchaser assumes and will hold harmless Lutron EA and Lutron in respect of all such loss or damage. Nothing in this warranty shall have the effect of limiting or excluding Lutron EA's or Lutron's liability for fraud or for death or personal injury resulting from its own negligence, or any other liability, if and to the extent that the same may not be limited or excluded as a matter of law.

This warranty does not affect the statutory rights of consumer purchasers of this product.

Although every attempt is made to ensure that catalogue information is accurate and up-to-date, please check with Lutron EA before specifying or purchasing this equipment to confirm availability, exact specifications, and suitability for your application. Patents pending.

Lutron, Lyneo, and Rania are registered trademarks of Lutron Electronics Co., Inc. in the Community Trademark System © 2008 Lutron Electronics Co., Inc.