

Lamp Socket Wiring Tester

For use with Lutron Ballasts only

FDB-LSWT-T5/T8

650 V \sim 100 kHz 0.125 A Max. CAT III

This tester helps Lutron installers decrease the amount of time to troubleshoot ballast wiring issues. It is used to verify proper filament voltage is present at all pins of fluorescent lamp sockets. The socket tester is not designed to diagnose incorrect input wiring to the ballast or controls.

Important Notes:


This device shall not be used to verify that a fixture is electrically safe prior to maintenance.

⚠ CAUTION - Voltage is present in lamp sockets while using this device. To avoid death or serious personal injury, use care at all times.

Device is not to remain permanently connected to a fixture under test.

No maintenance or calibration is required for this device.

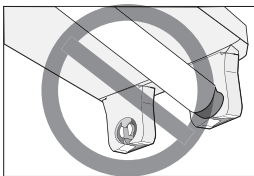
Not for use on non-Lutron ballast products. Such acts will void product warranty and user assumes any unknown results.

This device contains double insulation. 

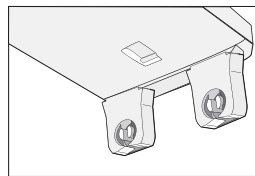
This device is rated as Pollution Degree 2 and is for use in Normal Conditions. Normal Conditions consist of indoor use up to 2000 m in elevation and a temperature range of 5 °C - 40 °C. A maximum relative humidity 80 % for temperatures up to 31 °C decreasing linearly to 50 % relative humidity at 40 °C is also required.

Usage instructions:

1. Remove ALL Lamps from the fixture.

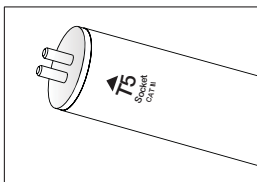


One Lamp Removed

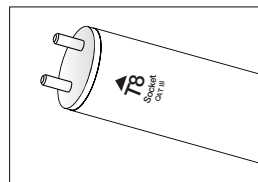


All Lamps Removed

2. Select the appropriate T5 or T8 Terminals of the tester to be placed into a lamp socket.



**T5 Terminals
(Narrow Spacing)**

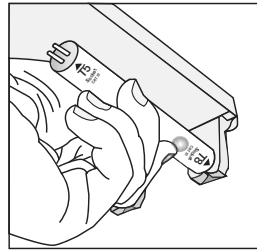


**T8 Terminals
(Wide Spacing)**

(Continued on back)

3. With power applied to the fixture, insert the tester into a lamp socket. For a rotating socket, twist the device until it locks, just as you would twist in a lamp.

4. If the Green LED lights continuously or flashes on and off at regular intervals (approx. every 2-7 seconds), the socket is receiving voltage from the ballast and is wired correctly.



5. If the Green LED does not light, the socket is NOT receiving proper voltage at both pins.

6. Repeat step numbers 3-5 for all sockets in the fixture.

7. If any sockets in the fixture did not cause the Green LED to light, TURN OFF POWER and check the system for errors that may include improper socket types or improper/loose wiring connections.



Technical Assistance

If you have questions concerning the installation or operation of this product, call the Lutron Technical Support Center. Please provide exact model number when calling.



U.S.A. and Canada (24 hrs/7 days)
+1.800.523.9466

Other countries (8am – 8pm EST)
+1.610.282.3800



Fax +1.610.282.6311



<http://www.lutron.com>

Limited Warranty (Valid only in U.S.A., Canada, Puerto Rico, and the Caribbean.)

Lutron will, at its option, repair or replace any unit that is defective in materials or manufacture within one year after purchase. For warranty service, return unit to place of purchase or mail to Lutron at 7200 Suter Rd., Coopersburg, PA 18036-1299, postage pre-paid.

THIS WARRANTY IS IN LIEU OF ALL OTHER EXPRESS WARRANTIES, AND THE IMPLIED WARRANTY OF MERCHANTABILITY IS LIMITED TO ONE YEAR FROM PURCHASE. THIS WARRANTY DOES NOT COVER THE COST OF INSTALLATION, REMOVAL OR REINSTALLATION, OR DAMAGE RESULTING FROM MISUSE, ABUSE, OR DAMAGE FROM IMPROPER WIRING OR INSTALLATION. THIS WARRANTY DOES NOT COVER INCIDENTAL OR CONSEQUENTIAL DAMAGES. LUTRON'S LIABILITY ON ANY CLAIM FOR DAMAGES ARISING OUT OF OR IN CONNECTION WITH THE MANUFACTURE, SALE, INSTALLATION, DELIVERY, OR USE OF THE UNIT SHALL NEVER EXCEED THE PURCHASE PRICE OF THE UNIT.

This warranty gives you specific legal rights, and you may have other rights which vary from state to state. Some states do not allow the exclusion or limitation of incidental or consequential damages, or limitation on how long an implied warranty may last, so the above limitations may not apply to you.

Lutron is a registered trademark of Lutron Electronics Co., Inc.

© 2009 Lutron Electronics Co., Inc.



Lutron Electronics Co., Inc.
7200 Suter Road
Coopersburg, PA 18036-1299
P/N 041-151 Rev. B
Made and printed in U.S.A. 08/09

