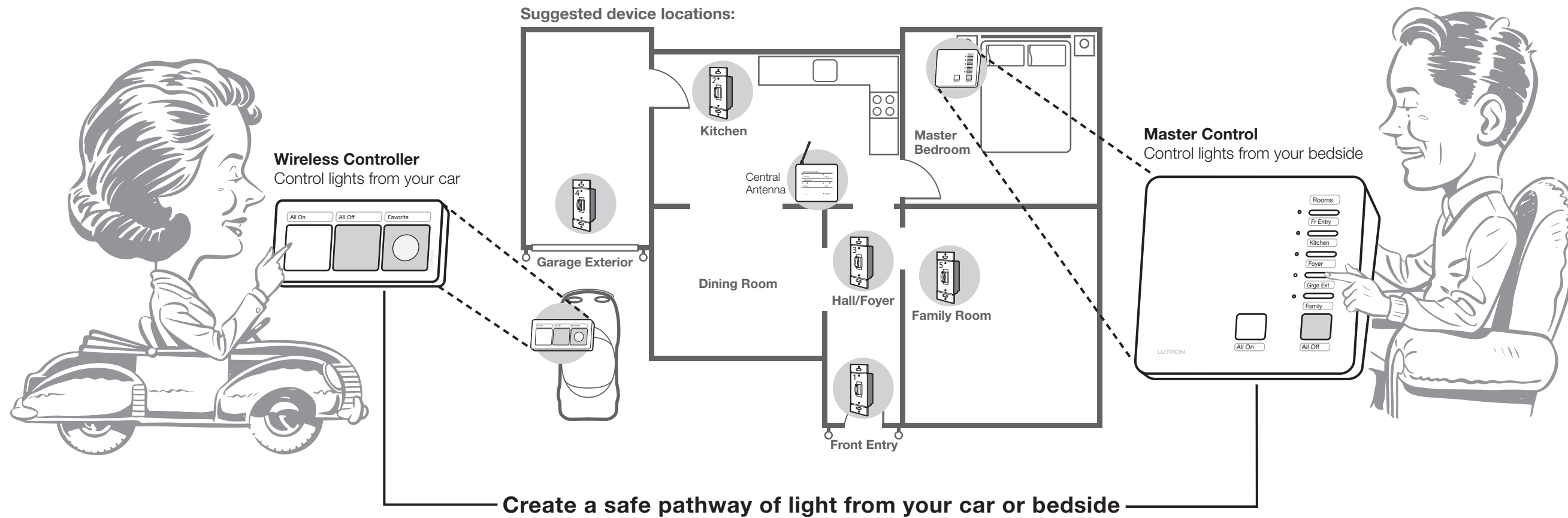
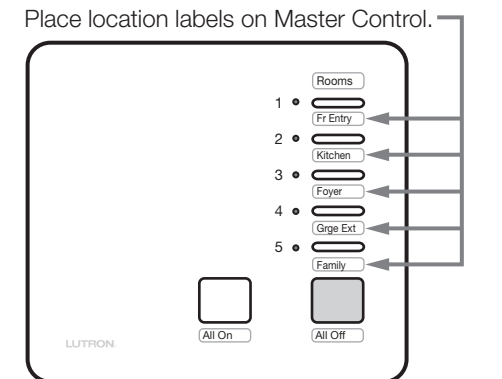


# AuroRa® wireless lighting control

simple to install | easy to use | pre-programmed to work right out of the box

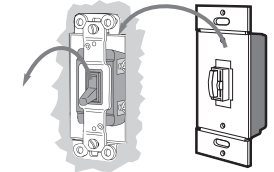


## 4 How to set up your system

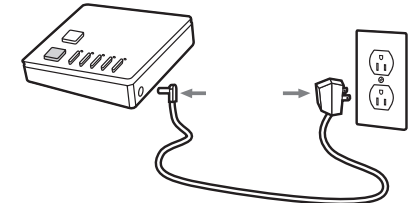


(suggested device locations shown above)

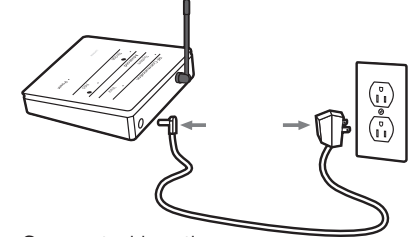
Turn power off at corresponding circuit breaker or remove fuse. Install device #1 at button #1 location and device #2 at button #2 location etc...



Plug in Master Control and place on tabletop in any desired room.



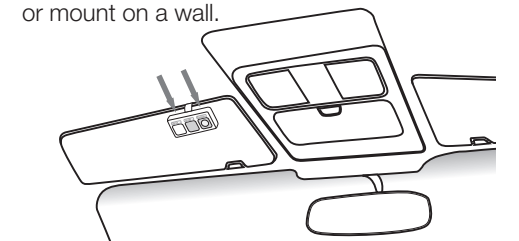
Centrally locate and plug in the Central Antenna.



Suggested locations:

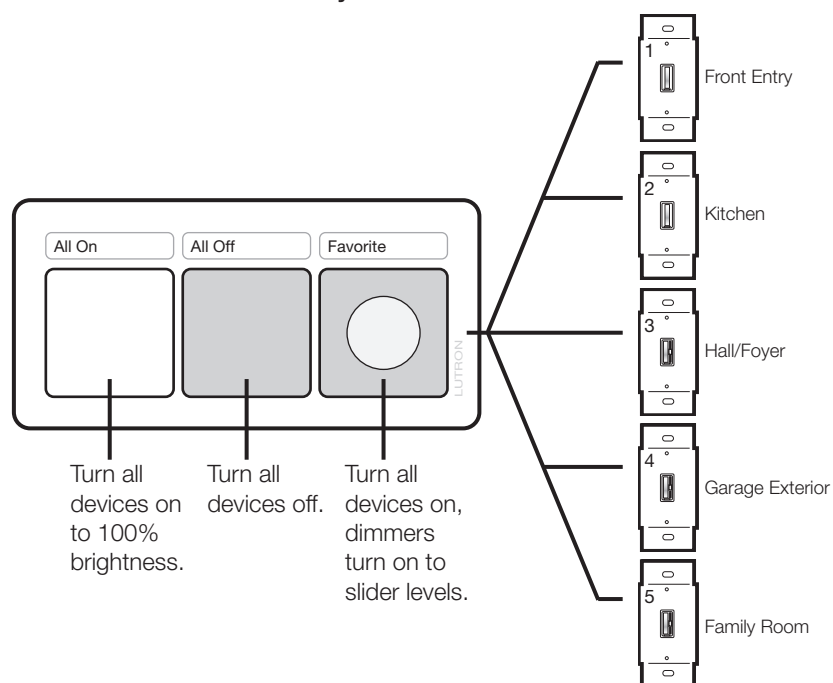
- hide under couch
- in cabinet above microwave
- under a table
- in a closet

Place Wireless Controller in the car, on a table or mount on a wall.

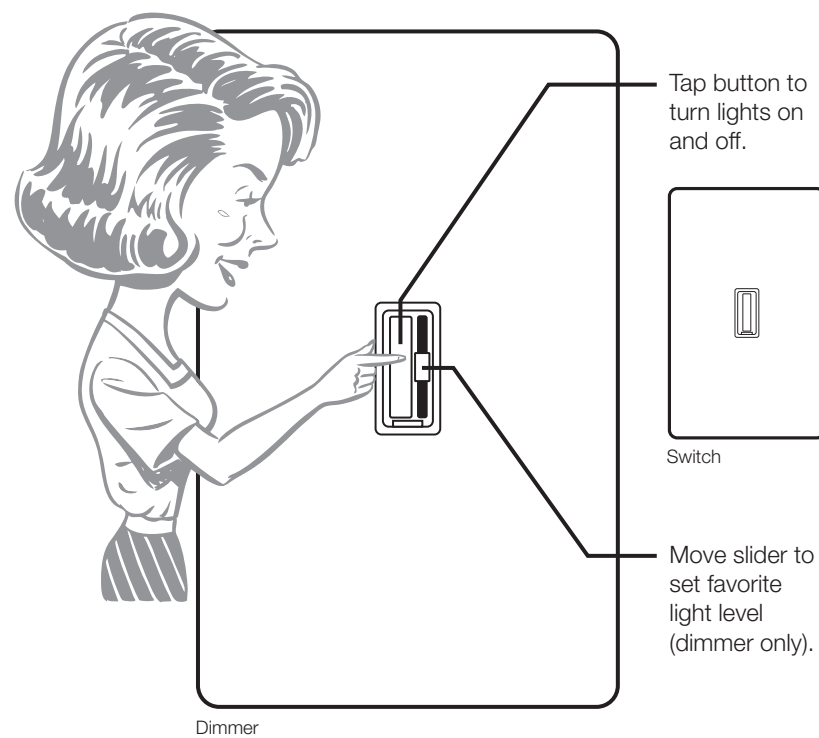


You're finished! Enjoy your AuroRa system.

## 1 How the Wireless Controller operates the dimmers in your home



## 2 How to operate the wall Dimmers and Switches



## 3 How the Master Control works devices individually or as a group

