

# Troubleshooting

Symptom	Possible Cause
Light does not turn ON.	<ul style="list-style-type: none"> <li>• Front Accessible Service Switch (FASS™) on Dimmer/Switch is pulled out to the OFF position.</li> <li>• Light bulb(s) burned out.</li> <li>• Breaker is OFF or tripped.</li> </ul>
Dimmer/Switch does not respond to Keypad button press.	<ul style="list-style-type: none"> <li>• Replacement Dimmer/Switch is out of RF range.</li> <li>• Replacement Dimmer/Switch not activated to system.</li> <li>• Replacement Keypad not activated to system.</li> </ul>
Dimmer/Switch does not switch from 3-way location.	<ul style="list-style-type: none"> <li>• Miswire—check wiring with 3-way or 4-way diagram on page 1.</li> </ul>

## FCC Information

Note: This equipment has been tested and found to comply with the limits for a Class B digital device, pursuant to Part 15 of the FCC rules. These limits are designed to provide reasonable protection against harmful interference in a residential installation. This equipment generates, uses and can radiate radio frequency energy and, if not installed and used in accordance with the instructions, may cause harmful interference to radio or television reception. However, there is no guarantee that interference will not occur in a particular installation. If this equipment does cause harmful interference to radio or television reception, which can be determined by turning the equipment off and on, the user is encouraged to try to correct the interference by one or more of the following measures:

- Reorient or relocate the receiving antenna.
- Increase the separation between the equipment and receiver.
- Connect the equipment into an outlet on a circuit different from that to which the receiver is connected.
- Consult the dealer or an experienced radio/TV technician for help.

Caution: Changes or modifications not expressly approved by Lutron Electronics Co. could void the user's authority to operate this equipment.

## Technical Assistance

If you have questions concerning the installation or operation of this product, call the **Lutron Technical Support Center**. Please provide exact model number when calling. +1.800.523.9466 (U.S.A., Canada, and the Caribbean)

Other countries call +1.610.282.3800

Fax +1.610.282.3090

Visit our web site at [www.lutron.com](http://www.lutron.com)

These products may be covered under one or more of the following U.S. patents: 5,248,919; 5,637,930; 5,838,226; 5,848,054; 5,905,442; 5,982,103; 6,687,487; 6,803,728; 7,091,672; D526,969; D538,759 and corresponding foreign patents. U.S. and foreign patents pending. Lutron, Fassada, AuroRa and the sunburst logo are registered trademarks and FASS is a trademark of Lutron Electronics Co., Inc. NEC is a registered trademark of the National Fire Protection Association, Quincy, Massachusetts. CAPSYLITE and DESIGNER are registered trademarks of Osram Sylvania, Inc. PAR-16 is a trademark of Royal Philips Electronics. © 2007 Lutron Electronics Co., Inc.

Lutron Electronics Co., Inc.  
7200 Suter Road  
Coopersburg, PA 18036-1299, U.S.A.  
Made and printed in the U.S.A. 06/07 P/N 044-144 Rev. A

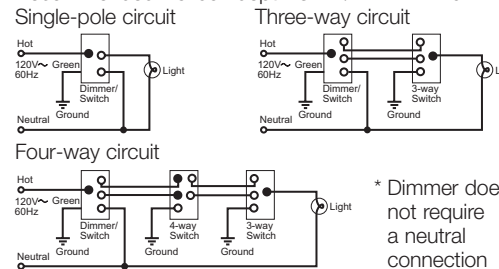
# AuroRa®

## Installation Instructions for Replacement Dimmer and Switch

Read all instructions completely before installation.

### Important Notes

1. **Caution:** To avoid overheating and possible damage to other equipment, do not use to control receptacles, motor-operated or transformer-supplied appliances. Do not use dimmer to control fluorescent lighting fixtures.
2. Use dimmers with 120 V~ incandescent or halogen lighting fixtures only. Do not use dimmer with low-voltage transformers.
3. The -5ANS Switch is UL listed for all incandescent, halogen, magnetic low voltage, electronic low voltage, magnetic fluorescent and electronic fluorescent ballasts.
4. Install in accordance with all national and local electrical codes.
5. When there is no ground wire or a way to connect the wallbox to ground within the wallbox, the NEC® 2005, Article 404-9, allows a dimmer without a grounding connection to be installed as a replacement as long as a plastic, noncombustible wallplate is used. For this type of installation, cap or remove the green ground wire on the dimmer, and use an appropriate wallplate (such as Lutron's Fassada® series wallplates).
6. Do not paint dimmers or wallplates.
7. To clean, wipe with a clean damp cloth. Do not use any chemical cleaning solutions.
8. Do not use where total wattage is under recommended minimum load of 10 Watts for the -5ANS or 50 Watts for the -6D.
9. -6D's work with most incandescent light bulbs. Dimmers/switches may not work with dioded light bulbs (Sylvania DESIGNER 16™ or Philips PAR-16™).
10. Operate system in temperatures between 0 °C (32 °F) and 40 °C (104 °F).
11. Dimmer/switch may feel warm to the touch during normal operation.
12. Recommended wallbox depth is 2 1/2 in. minimum.
13. Single-pole circuit

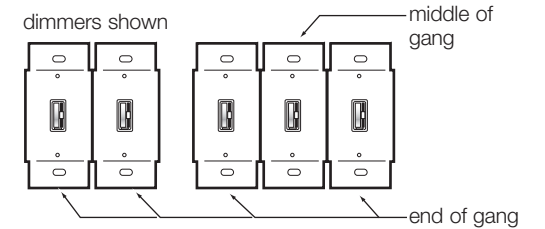


\* Dimmer does not require a neutral connection

## Incandescent/120 V Halogen Dimmer AR-6D 120 V~ 60 Hz 600 W

## Switch AR-5ANS 120 V~ 60 Hz 5 A

14. When combining dimmers/switches in the same wallbox, the device load capacity must be reduced.



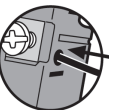
15. **Caution:** Follow the load capacities in table below for multi-ganged dimmers/switches.

Derating Chart

Model	Not Ganged	End of Gang	Middle of Gang
AR-6D	600 W	500 W	400 W
AR-5ANS	5A	4A	3A

15. **Wire Preparation**  
Trim or strip wallbox wires to the length indicated by the strip gauge on the back of the dimmer/switch.

**Push-in:** To install, simply insert wires by hand. Use #14 AWG solid copper wire only. For aluminum wire, consult an electrician. DO NOT use stranded or twisted wire.

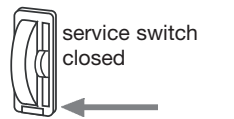
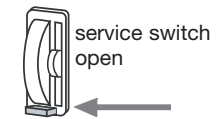


**Screw Terminals:** Tighten securely. Screw terminals are for use with solid copper wire only. For aluminum wire, consult an electrician. DO NOT use stranded or twisted wire.



16. **Service Switch**  
Pull service switch out to open position to replace light bulbs (this cuts all power to the load). Push service switch in after new bulb is installed to restore power.

dimmer shown



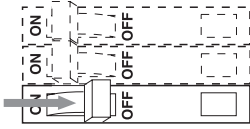
### FCC Information

Note: This equipment has been tested and found to comply with the limits for a Class B digital device, pursuant to Part 15 of the FCC rules. Operation is subject to the following: (1) This device may not cause harmful interference, and (2) this device must accept any interference received, including interference that may cause undesired operation.



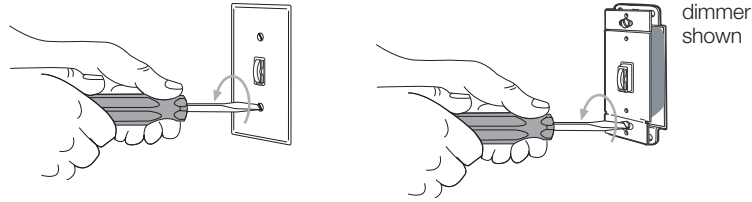
## Installing a Replacement Dimmer/Switch

- 1 Turn power off at corresponding circuit breaker or remove fuse



**WARNING:** Power must be turned off for your safety.

- 2 Remove wallplate and existing dimmer/switch. **Do not** disconnect wires.



- 3 Uninstall existing dimmer/switch

A. Verify that current wiring is correct. Correct the wiring if it is not correct. Refer to wiring diagrams in note 13 under Important Notes (page 1). If installing a switch, verify there is neutral available.

B. Note which wire(s) are connected to each terminal. The replacement dimmer/switch will be installed identically.

C. Disconnect the wires from the dimmer/switch.

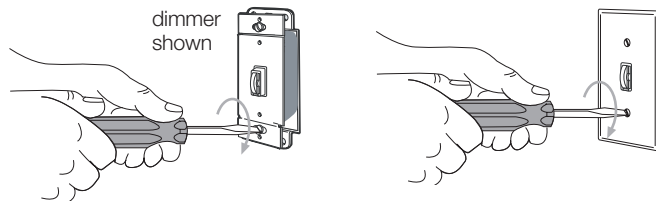


**Need Help?**  
Call Lutron's Technical Support Center - open 24 hours a day, 7 days a week.  
**1.800.523.9466**

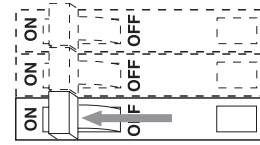
- 4 Install replacement dimmer/switch

Connect the wires to the terminals on the replacement device in the same configuration they were connected to the old device.

- 5 Mount device and install wallplate



- 6 Turn power on at circuit breaker or replace fuse

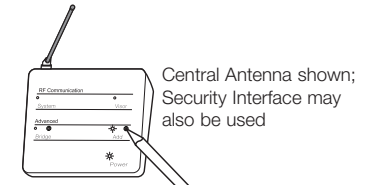


## Activating the Replacement Dimmer/Switch

The AuroRa replacement dimmer/switch can be activated in the system using either the Central Antenna (AR-CA-WH) or the Security Interface (AR-SI-WH). The procedure below refers to the Central Antenna; however, the procedure is the same for the Security Interface.

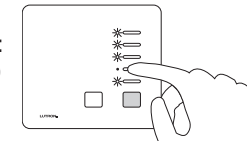
- 1 Enter advanced "Add" Mode.

Press and hold the "Add" button on the Central Antenna until the "Add" LED light begins to flash (approximately 3 seconds).



- 2 Choose Master Control Button for Dimmer/Switch to Activate.

Dimmer and switches that are in the system will flash their lights. The Master Control will have the following LED feedback: LED flashing corresponds to a dimmer/switch present and LED off corresponds to a dimmer/switch not present.

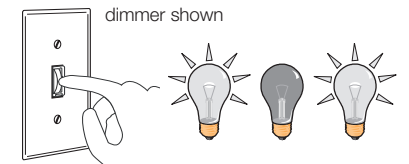


Press and hold the Master Control button that corresponds to the dimmer/switch not present (LED off), until the LED turns on.

- 3 Activate Dimmer/Switch.

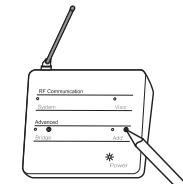
Press and hold the button on the replacement dimmer/switch until the corresponding load begins flashing its lights (approximately three seconds).

The selected Master Control button will flash its LED.



- 4 Exit advanced "Add" Mode.

Press and hold the "Add" button until the "Add" LED light stops flashing and remains off (approximately 3 seconds). The dimmers will stop flashing their lights, the Master Control will stop flashing its LEDs.



- 5 The Replacement Dimmer/Switch has now been activated.