

# Lutron® Roller Shade Side Channel

English

Installation Guide (please read before installing)

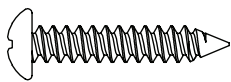
This guide describes the installation of the side channel for roller shades. See the guide included with the shades for specific shade mounting instructions.

## Tools required:

Tape Measure	3/8 in Drill Bit
Diagonal Pliers	Level
Power Drill	#2 Phillips Screwdriver
1/4 in Drill Bit	Miter Saw

## Box Contents:

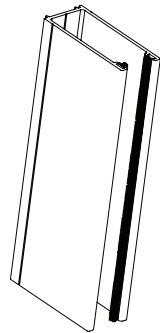
(20) Side Channel  
Mounting Screw (#6 x 3/4 in  
Phillips Head)



(10) 3/8 in Hole Plugs



Lutron Side Channel



**CAUTION:** Risk of falling objects. Securely install the roller shade system per the mounting instructions. Failure to do so could result in minor or moderate injury.

## Notes:

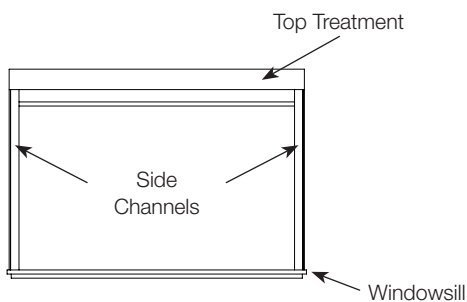
- Lutron systems are intended for use with only Lutron hardware, controls, and power supplies.
- Shades wider than 4 ft (1.2 m) require two people to install.
- **Codes:** Install in accordance with all local and national electrical codes.
- **Environment:** Ambient operating temperature: 32 °F - 104 °F (0 °C - 40 °C), 0 - 90% humidity, non-condensing. Indoor use only.
- Maintain sufficient clearance between the moving shade and any object.

## 1 Measure and Match Side Channel Length

1.1 Measure the height of the opening where side channel is to be installed and verify that each piece fits in the intended space.

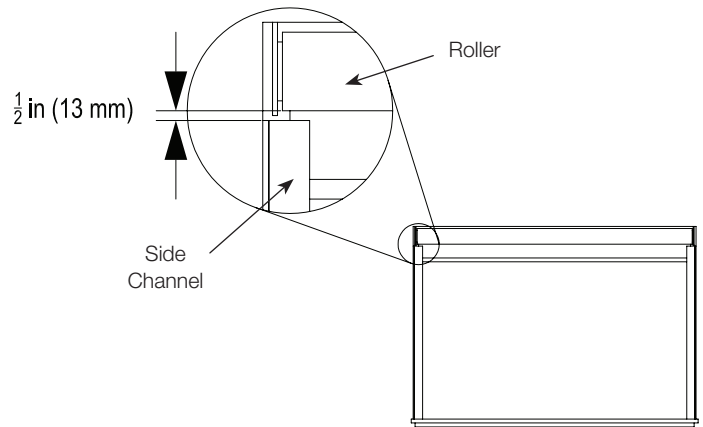
**Note:** For fascia and pocket installations, measure from the bottom of the top treatment to the windowsill.

**Top of side channel is flush with the top treatment**



## 1 Measure and Match Side Channel Length (continued)

**Note:** If not using a Lutron top treatment, maintain a space of 1/2 in (13 mm) between roller and top of side channel.

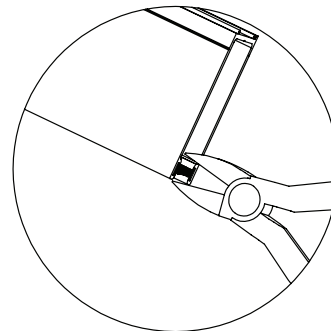


1.2 Cut any pieces that need additional trimming with a miter saw. Leave the protective plastic coating in place to prevent scratching the side channel while cutting. Be careful to keep track of which side channel section goes with which window.

**Tip:** Labeling each piece with a marker can help keep track of which pieces go where. The marks will not be visible after the protective plastic coating is removed.

1.3 If side channels were trimmed, crimp the cut ends of the side channel with a pair of pliers to prevent the wool pile from sliding out of the side channel.

**Use diagonal pliers to crimp the cut ends**



**Notice:** Crimping the wool pile channels will prevent the wool pile from moving and getting tangled in the shade.

## 2 Identify the Bottom End of the Side Channel

2.1 Inspect the wool pile inside of the side channel. The wool pile fibers will be pointed slightly towards one end of the side channel. The end they point to is the bottom end of the side channel. Mark the bottom and top ends of each piece.

**Note:** Light shades can be slowed or stopped by stiff wool pile fibers. Installing the side channel with the fibers pointing downwards can reduce this effect.

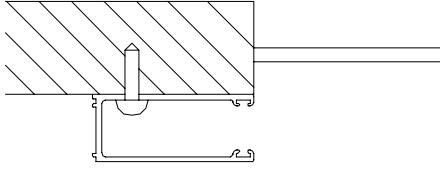
## 3 Drill Mounting Holes

3.1 Whether the installation type is inside or outside mount, mark the places on the side channel where the mounting screws are to be placed. Drill holes through both sides of the side channel with a 1/4 in drill bit.

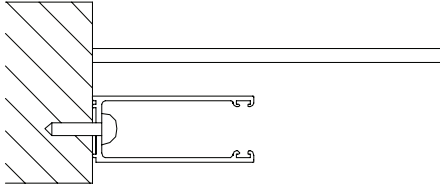
### 3 Drill Mounting Holes (continued)

#### Guiding Lines

#### Outside Mount Side Channel



#### Inside Mount Side Channel



**Note:** Drill the holes along the guiding lines in the side channel. This will ensure the holes are in the proper alignment and will help prevent interference between the mounting screws and shade fabric.

- 3.2 For outside mounted side channel, drill a clearance hole in only the room side of the side channel with a 3/8 in drill bit. This hole will be used to access the 1/4 in hole behind it.

**Notice:** Do not drill all the way through both sides of the side channel. The hole will be too big for the mounting screws to hold the side channel.

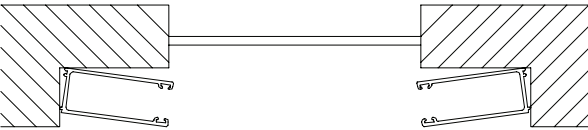
- 3.3 Clear the side channel and wool pile of any metal chips after cutting and drilling the side channel. This will reduce noise and help protect the shade fabric.

### 4 Mount the Side Channel

- 4.1 Locate side channel for each shade according to the shade's bracket-to-bracket width. Insert the mounting screws through the holes drilled in step 3 and tighten them with a #2 Phillips screwdriver.

**Note:** Side channel sections should be spaced so that only 1/2 in to 1 in of the shade is inside the side channel.

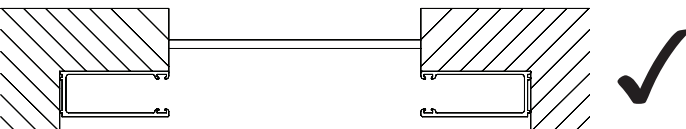
#### Side channel sections are not straight



#### Side channel sections are not aligned



#### Side channel sections are straight and aligned



**Notice:** Do not over tighten the mounting screws. This can cause the side channel to warp, especially if the mounting surface is not flat.

**Tip:** Inserting the mounting screws near the top end first can help prevent the side channel section from tipping over while installing the rest of the mounting screws.

### 4 Mount the Side Channel (continued)

- 4.2 Repeat step 4.1 for each piece of side channel, making sure that each pair is installed plumb, level, and square.
- 4.3 For outside mount only, insert hole plugs where needed to cover the 3/8 in screwdriver clearance holes.

### 5 Troubleshooting

Symptom	Solution
Fabric does not move smoothly	Align and straighten side channel
	Orient side channel so wool pile points downward
	Ensure shade or hembar is not rubbing on the side channel or mounting screws
Shade motion sounds abnormally loud inside the side channel	Ensure shade is not rubbing on the edge of the side channel
Shade hembar comes out of the side channel when the shade opens	Set shade open limit below the top of the side channel
Shades blow out of the side channels	Equalize air pressure by providing a path for air flow on the window side of the shade, perhaps by drilling holes in the top of the pocket or top back cover

### Limited Warranty

#### SCOPE

This limited warranty ("Warranty") covers the Lutron supplied (a) Sivoia® QS Shade System ("Sivoia® QS Shade System"), (b) Sivoia QEDTM Shade System ("Sivoia QEDTM Shade System"), (c) manual shade system and (d) alternating current or a/c shade system (each of the foregoing being a "System"). Customer acknowledges and agrees that use of the System constitutes acceptance of all terms and conditions of this Warranty.

#### LIMITED WARRANTY

Subject to the exclusions and restrictions described below, Lutron warrants that each System will be free from manufacturing defects from the date of shipment by Lutron for a period of (a) one year as to the wall controls, interfaces and system accessories of the Sivoia QS Shade System ("External Sivoia QS Components") and (b) eight years as to the other Systems and the Roller Shade EDU, shade fabric, and shade hardware of the Sivoia QS Shade System. If any manufacturing defect exists in the External Sivoia QS Components, so long as Customer promptly notifies Lutron of the defect within the one year warranty period and, if requested by Lutron, returns the defective part(s), Lutron will, at its option, either repair the defective part(s) or provide comparable replacement part(s). If any manufacturing defect exists in any of the components of a System other than the External Sivoia QS Components, so long as Customer promptly notifies Lutron of the defect within the eight year warranty period and, if requested by Lutron, returns the defective part(s), Lutron will, at its option, either repair the defective part(s) or issue a credit to the Customer against the purchase price of comparable replacement part(s) purchased from Lutron as provided below:

Number of years from date of shipment	Percentage of cost of replacement parts credited by Lutron
Up to 2	100%
More than 2 but not more than 5	50%
More than 5 but not more than 8	25%
More than 8	0%

Replacement parts for the System provided by Lutron or, at its sole discretion, an approved vendor may be new, used, repaired, reconditioned, and/or made by a different manufacturer.

#### EXCLUSIONS AND RESTRICTIONS

This Warranty will be void, and Lutron and its suppliers will have no responsibility under this Warranty, if Lutron or its representatives cannot access any components of the System to inspect, diagnose problems with or repair the System or any of its components as a result of concealment or inaccessibility of such components within a building structure. This Warranty does not cover, and Lutron and its suppliers are not responsible for:

- Damage, malfunction or inoperability diagnosed by Lutron or a Lutron approved third party as caused by normal wear and tear, abuse, misuse, incorrect installation, neglect, accident, interference or environmental factors, such as (a) use of incorrect line voltages fuses or circuit breakers; (b) failure to install, maintain and operate the System pursuant to the operating instructions provided by Lutron and the applicable provisions of the National Electrical Code and of the Safety Standards of Underwriter's Laboratories; (c) use of incompatible devices or accessories; (d) improper or insufficient ventilation; (e) unauthorized repairs or adjustments or alterations; (f) vandalism; (g) an act of God, such as fire, lightning, flooding, tornado, earthquake, hurricane or other problems beyond Lutron's control; or (h) direct exposure to corrosive materials.
- On-site labor costs to diagnose issues with, and remove, repair, replace, adjust, reinstall and/or reprogram the System or any of its components.
- Components and equipment external to the System, such as, non-Lutron lighting and automation systems; building wiring audiovisual equipment; and non-Lutron time clocks, photosensors and motion detectors.
- The cost of repairing or replacing other property that is damaged when any System does not work properly, even if the damage was caused by the System.

**THIS WARRANTY IS IN LIEU OF ALL OTHER EXPRESS WARRANTIES. ALL IMPLIED WARRANTIES, INCLUDING THE IMPLIED WARRANTIES OF MERCHANTABILITY AND OF FITNESS FOR A PARTICULAR PURPOSE, ARE LIMITED TO EIGHT YEARS FROM THE DATE OF SHIPMENT, EXCEPT THAT SUCH IMPLIED WARRANTIES ARE LIMITED TO ONE YEAR FROM THE DATE OF SHIPMENT AS TO THE EXTERNAL**

**SIVOIA QS COMPONENTS. NO LUTRON AGENT, EMPLOYEE OR REPRESENTATIVE HAS ANY AUTHORITY TO BIND LUTRON TO ANY AFFIRMATION, REPRESENTATION OR WARRANTY CONCERNING THE SYSTEMS. UNLESS AN AFFIRMATION, REPRESENTATION OR WARRANTY MADE BY AN AGENT, EMPLOYEE OR REPRESENTATIVE IS SPECIFICALLY INCLUDED HEREIN, OR IN STANDARD PRINTED MATERIALS PROVIDED BY LUTRON, IT DOES NOT FORM A PART OF THE BASIS OF ANY BARGAIN BETWEEN LUTRON AND CUSTOMER AND WILL NOT IN ANY WAY BE ENFORCEABLE BY CUSTOMER. IN NO EVENT WILL LUTRON OR ANY OTHER PARTY BE LIABLE FOR EXEMPLARY, CONSEQUENTIAL, INCIDENTAL OR SPECIAL DAMAGES (INCLUDING, BUT NOT LIMITED TO DAMAGES FOR PERSONAL INJURY, FAILURE TO MEET ANY DUTY, INCLUDING OF GOOD FAITH OR REASONABLE CARE, NEGLIGENCE, OR ANY OTHER LOSS WHATSOEVER), NOR FOR ANY REPAIR WORK UNDERTAKEN WITHOUT LUTRON'S PRIOR WRITTEN CONSENT ARISING OUT OF OR IN ANY WAY RELATED TO THE INSTALLATION, DEINSTALLATION, USE OF OR INABILITY TO USE THE SYSTEM OR OTHERWISE UNDER OR IN CONNECTION WITH ANY PROVISION OF THIS WARRANTY, EVEN IN THE EVENT OF THE FAULT, TORT (INCLUDING NEGLIGENCE), STRICT LIABILITY, BREACH OF CONTRACT OR BREACH OF WARRANTY OF LUTRON OR ANY OTHER PARTY, AND EVEN IF LUTRON OR SUCH OTHER PARTY WAS ADVISED OF THE POSSIBILITY OF SUCH DAMAGES. NOTWITHSTANDING ANY DAMAGES THAT CUSTOMER MIGHT INCUR FOR ANY REASON WHATSOEVER (INCLUDING, WITHOUT LIMITATION, ALL DIRECT DAMAGES AND ALL DAMAGES LISTED ABOVE), THE ENTIRE LIABILITY OF LUTRON AND OF ALL OTHER PARTIES UNDER THIS WARRANTY ON ANY CLAIM FOR DAMAGES ARISING OUT OF OR IN CONNECTION WITH THE MANUFACTURE, SALE, INSTALLATION, DELIVERY, USE, REPAIR, OR REPLACEMENT OF THE SYSTEM, AND CUSTOMER'S SOLE REMEDY FOR THE FOREGOING, WILL BE LIMITED TO THE AMOUNT PAID BY CUSTOMER FOR THE SYSTEM. THE FOREGOING LIMITATIONS, EXCLUSIONS AND DISCLAIMERS WILL APPLY TO THE MAXIMUM EXTENT ALLOWED BY APPLICABLE LAW, EVEN IF ANY REMEDY FAILS ITS ESSENTIAL PURPOSE. THIS WARRANTY GIVES YOU SPECIFIC LEGAL RIGHTS. YOU MAY ALSO HAVE OTHER RIGHTS WHICH VARY FROM STATE TO STATE. SOME STATES DO NOT ALLOW LIMITATIONS ON HOW LONG AN IMPLIED WARRANTY LASTS OR THE EXCLUSION OR LIMITATION OF INCIDENTAL OR CONSEQUENTIAL DAMAGES, SO THE ABOVE LIMITATIONS OR EXCLUSIONS MAY NOT APPLY TO YOU. WARRANTY CLAIMS, TECHNICAL ASSISTANCE AND WARRANTY INFORMATION.**

Contact the Lutron Technical Support Center at the numbers provided below or your local Lutron sales representative with questions concerning the installation or operation of the System or this Warranty, or to make a warranty claim. Please provide the exact model number when calling. Lutron and Sunburst logo are registered trademarks of Lutron Electronics Co., Inc.

**Worldwide Headquarters** | USALutron Electronics Co., Inc. 7200 Suter Road Coopersburg, PA 18036-1299 USA TEL: 1.610.282.3900 FAX: 1.610.282.3090 Technical Support: 1.800.523.9466 or 1.610.282.6701 Toll Free: 1.888.LUTRONEMAIL shadinginfo@lutron.com WEB: www.lutron.com/shadingsolutions

**Europe Headquarters** | United Kingdom Lutron EA Ltd Sovereign Close London, E1W 3JF, UK TEL: +44.(0)20.7702.0657 FAX: +44.(0)20.7480.6899 Technical Support: +44.(0)20.7480.6899 FREEPHONE: 0800.282.107

**Asian Headquarters** | Singapore Lutron GL Ltd 15 Hoe Chiang Road #07-03 Singapore, 089316 TEL: +65.6220.4666 FAX: +65.6220.4333 Technical Support: 800.120.4491

©2010 LUTRON Electronics Co., Inc. P/N 045-334 REV A