

# LUTRON®

## *For Your Information ...*

APPLICATION  
NOTE

**#216**

## Integration of AuroRa® Security with Honeywell® Vista® Series Security Control Panels

### Overview

This application note details integration of the *AuroRa* Security package with Honeywell Vista Series security panels. The goal of this document is to simplify the integration process and cover the most common uses for the *AuroRa* Security package. This document assumes that the user is knowledgeable in the programming process for a Honeywell Vista Series Security Panel. Note that while the intended focus of this application note is Honeywell security equipment, the basic principles of this process can be applied to any security system of similar architecture. When the process described herein is complete, the Honeywell security system will successfully activate the *AuroRa* Security Lighting Scene upon the activating of appropriate security events.

### Goals of this Application Note

1. Wire the Honeywell 4204 Relay Module to the *AuroRa* Security Interface.
2. Configure the Honeywell Vista Panel to activate a contact closure using the Stay Closed (Maintained) Action on the *AuroRa* Security Scene CCI.
3. Configure the Honeywell Vista Panel to deactivate a contact closure on the *AuroRa* Security Scene CCI.

### Procedure

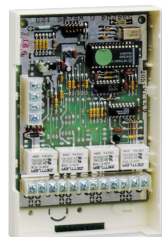
1. Install and wire the Honeywell 4204 Relay Module to the *AuroRa* Security Interface.
2. Program the Output Device Mappings.
3. Program the Output Functions.

### Required Components

- 1 *AuroRa* Security Package (Lutron P/N AR-SECURITY-XX)
- 1 Honeywell Vista Series Security Panel (Honeywell P/N Vista-XXP)
- 1 Honeywell Alpha English Keypad (Honeywell P/N 6160)
- 1 Honeywell Relay Module (Honeywell P/N 4204)



Honeywell Vista Series  
Security Panel



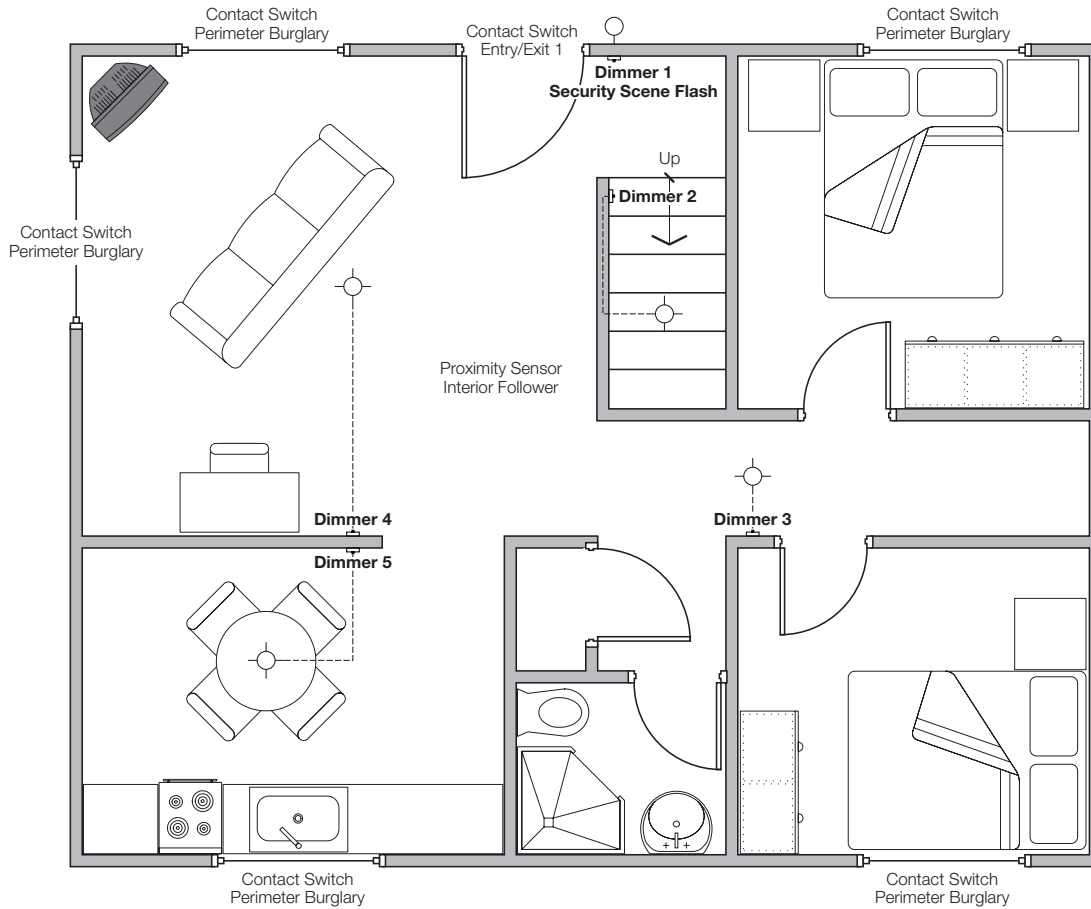
Honeywell 4204  
Relay Module



Honeywell 6160  
Keypad

## Sample Configuration

The sample floor plan below shows one possible configuration of the AuroRa® Security Lighting Control System. Note the security sensors installed in the home and their associated zone types. For example, the door sensor is a contact switch with an “Entry/Exit 1” zone type. This application note will demonstrate a procedure for activating the *AuroRa* Security Lighting Scene using the “Any Burglary Alarm” zone type on the Honeywell Vista Series Security Panel. Use of the “Any Burglary Alarm” zone type will allow activation of the Security Lighting Scene by all relevant sensors installed in the home.



### Programming Summary

#### Security Scene

- Activated by Zone Type (Any Burglary Alarm), Action = Stay Closed
- Deactivated by Zone Type (Disarming), Action = Off

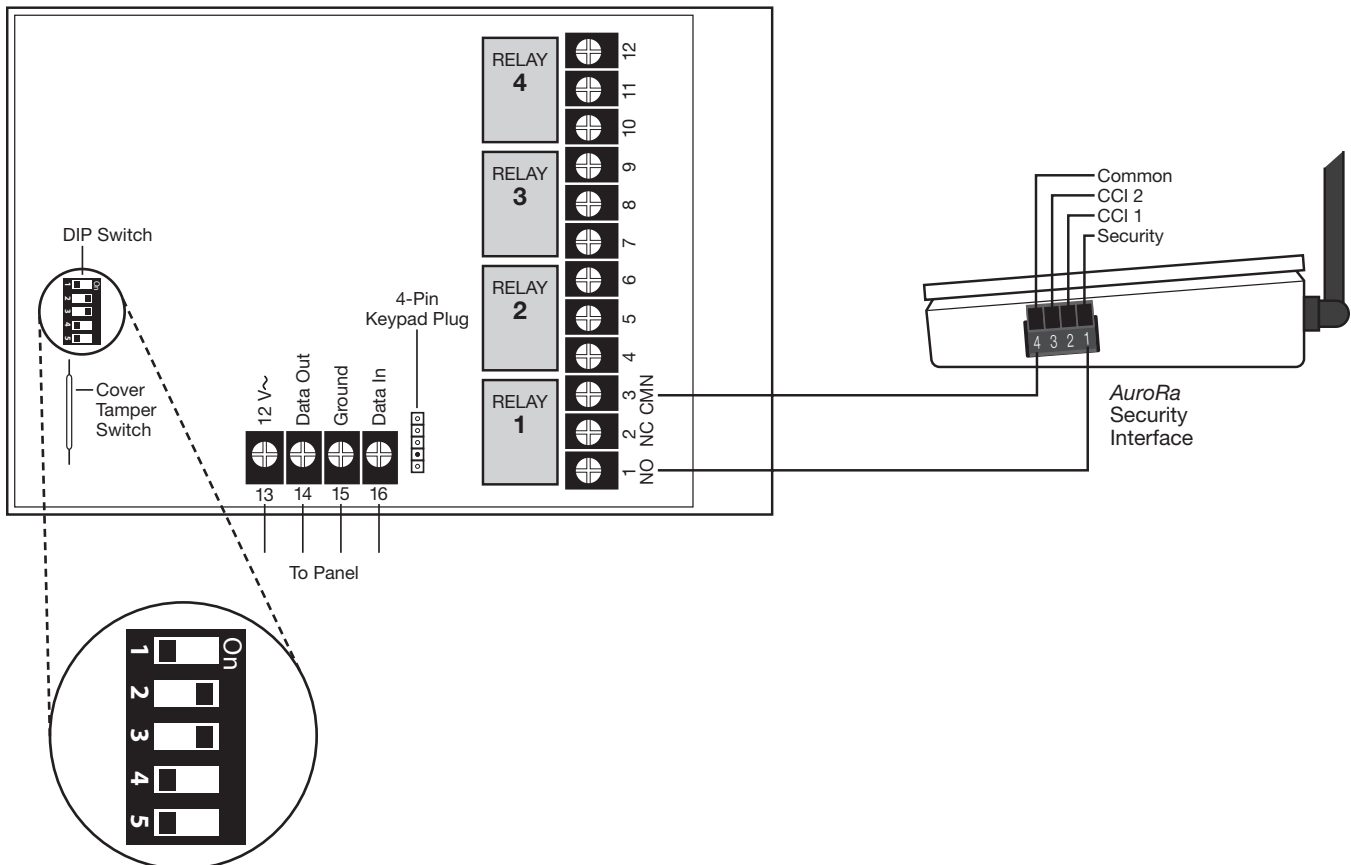
## Install the Honeywell 4204 Relay Module

In this step, the 4204 Relay Module will be wired to the Honeywell Vista Series Security Panel. In addition, the 4204 Relay Module will be addressed and wired to the AuroRa® Security Interface.

1. Power down the security panel.
2. Remove the cover from the 4204 Relay Module.
3. Disable the Cover Tamper Switch at position 1 on the 4204 Relay Module DIP Switch (1=OFF).  
**Note:** If you want to enable cover tamper protection on the 4204 Relay Module, please reference Honeywell Security Documentation upon completion of this application note.
4. Configure the DIP Switches to address the Relay Module.  
Select address 12 on the DIP Switches (2=ON, 3=ON, 4=OFF, 5=OFF).
5. Wire the Relay Module to the panel communication bus as described in the included 4204 Relay Module directions. Note that the 4204 Relay Module shares this bus with other devices such as the system keypad and optional devices such as the RF receiver.
6. Wire pin 1 of the Honeywell 4204 Relay Module (Normally Open) to pin 1 of the AuroRa Security Interface connector (Security CCI).
7. Wire pin 3 of the Honeywell 4204 Relay Module (Common) to pin 4 of the AuroRa Security Interface connector (Common).
8. Power up the security panel.

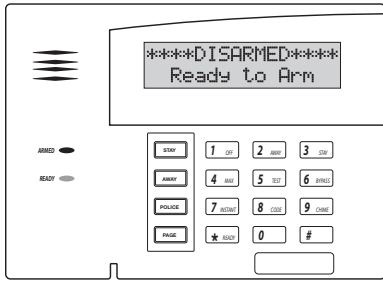
The 4204 Relay Module has been successfully wired and addressed.

Honeywell 4204 Relay Module



## Program the Output Device Mappings

In this section, the Honeywell Vista Series Security Panel will be made aware of the 4204 Relay Module and Relay Number 1 will be mapped to Output Number 1.



1. Enter the 4-digit Installer Code ( \_\_\_ \_\_\_ \_\_\_ \_\_\_ ) + **800** on the 6160 keypad.

```
Installer Code
                20
```

2. At the INSTALLER CODE prompt, press the \* **READY** key to continue.

```
Field?
```

3. At the FIELD? prompt, enter **79** to enter Menu Mode: Output Device Mapping.

```
Enter Output No.
00=Quit        01
```

4. At the ENTER OUTPUT NO. prompt, enter **01**. Press the \* **READY** key to continue.

```
01 Output Type
Relay          1
```

5. At the 01 OUTPUT TYPE prompt, enter **1**. RELAY should appear underneath the prompt. Press the \* **READY** key to continue.

```
01 Module Addr
07-15         12
```

- Note:** Vista-10P users will not see this prompt
6. At the 01 MODULE ADDRESS prompt, enter **12** (the 4204 Relay Module address). Press the \* **READY** key to continue.

```
01 Rly Position
1-4           1
```

7. At the 01 RELAY POSITION prompt, enter **1** for relay number 1 on the 4204 Relay Module. Press the \* **READY** key to continue.

```
Enter Output No.
00=Quit        00
```

8. At the ENTER OUTPUT NO. prompt, enter **00** to quit Output Device Mapping Programming.

```
Enter * or #
```

9. At the ENTER \* OR # prompt, press the \* **READY** key to continue.

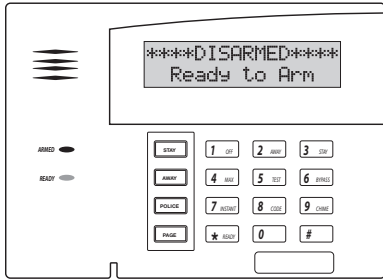
```
Field?
```

10. At the FIELD? prompt, press **99** to exit programming mode.

Relay Number 1 has been successfully mapped to Output Number 1.

## Program the Output Functions

In this section, the Honeywell Vista Series Security Panel will be programmed to close Output Number 1 upon the activating of “Any Burglary Alarm.” In addition, the panel will be programmed to open Output Number 1 upon Disarming of the alarm.



1. Enter the 4-digit Installer Code ( \_\_\_\_ \_ ) + **800** on the 6160 keypad.

```
Installer Code
                20
```

2. At the INSTALLER CODE prompt, press the \* **READY** key to continue.

```
Field?
```

3. At the FIELD? prompt, enter **80** to enter Menu Mode: Defining Output Functions.

```
Output Funct #
00=Quit        01
```

4. At the OUTPUT FUNCTION # prompt, enter **01**. Press the \* **READY** key to continue.

```
01 A E P Tris
?00 0 0 - ZL=00
```

5. The “Output Function Summary” screen should be displayed. Press the \* **READY** key to continue.

```
01 Activated By:
Zone Type      2
```

6. At the 01 ACTIVATED BY: prompt, enter **2** (Zone Type). Press the \* **READY** key to continue.

```
01 Enter Zn Type
Any Bure Alm   33
```

7. At the 01 ENTER ZONE TYPE prompt, enter **33** (Any Burglary Alarm). Press the \* **READY** key to continue.

```
01 Partition
                1
```

8. At the 01 PARTITION prompt, enter **1** (Partition 1). Press the \* **READY** key to continue.

```
01 Output Action
Stay Closed    2
```

9. At the 01 OUTPUT ACTION prompt, enter **2** (Stay Closed). Press the \* **READY** key to continue.

```
Enter Output No.
R01            01
```

10. At the ENTER OUTPUT NO. prompt, enter **01** (Output Number 01). Press the \* **READY** key to continue.

```
01 A E P Tris
R01 2 - 1 ZT=33
```

11. The “Output Function Summary” screen should be displayed.  
Press the \* **READY** key to continue.

```
Output Funct #
00=Quit      02
```

12. At the OUTPUT FUNCTION # prompt, enter **02**.  
Press the \* **READY** key to continue.

```
02 A E P Tris
?00 0 0 - ZL=00
```

13. The “Output Function Summary” screen should be displayed.  
Press the \* **READY** key to continue.

```
02 Activated By:
Zone Type    2
```

14. At the 02 ACTIVATED BY: prompt, enter **2** (Zone Type).  
Press the \* **READY** key to continue.

```
02 Enter Zn Type
Disarm      22
```

15. At the 02 ENTER ZONE TYPE prompt, enter **22** (Disarming).  
Press the \* **READY** key to continue.

```
02 Partition
1
```

16. At the 02 PARTITION prompt, enter **1** (Partition 1).  
Press the \* **READY** key to continue.

```
02 Output Action
Off        0
```

17. At the 02 OUTPUT ACTION prompt, enter **0** (Off).  
Press the \* **READY** key to continue.

```
Enter Output No.
R01      01
```

18. At the ENTER OUTPUT NO. prompt, enter **01** (Output Number 01).  
Press the \* **READY** key to continue.

```
02 A E P Tris
R01 0 - 1 ZT=22
```

19. The “Output Function Summary” screen should be displayed.  
Press the \* **READY** key to continue.

```
Output Funct #
00=Quit      00
```

20. At the OUTPUT FUNCTION # prompt, enter **00** to exit.

```
Enter * or #
```

21. At the ENTER \* or # prompt, press the \* **READY** key to continue.

```
Field?
```

22. At the FIELD? prompt, enter **99** to exit programming mode.

The output functions have been successfully programmed.

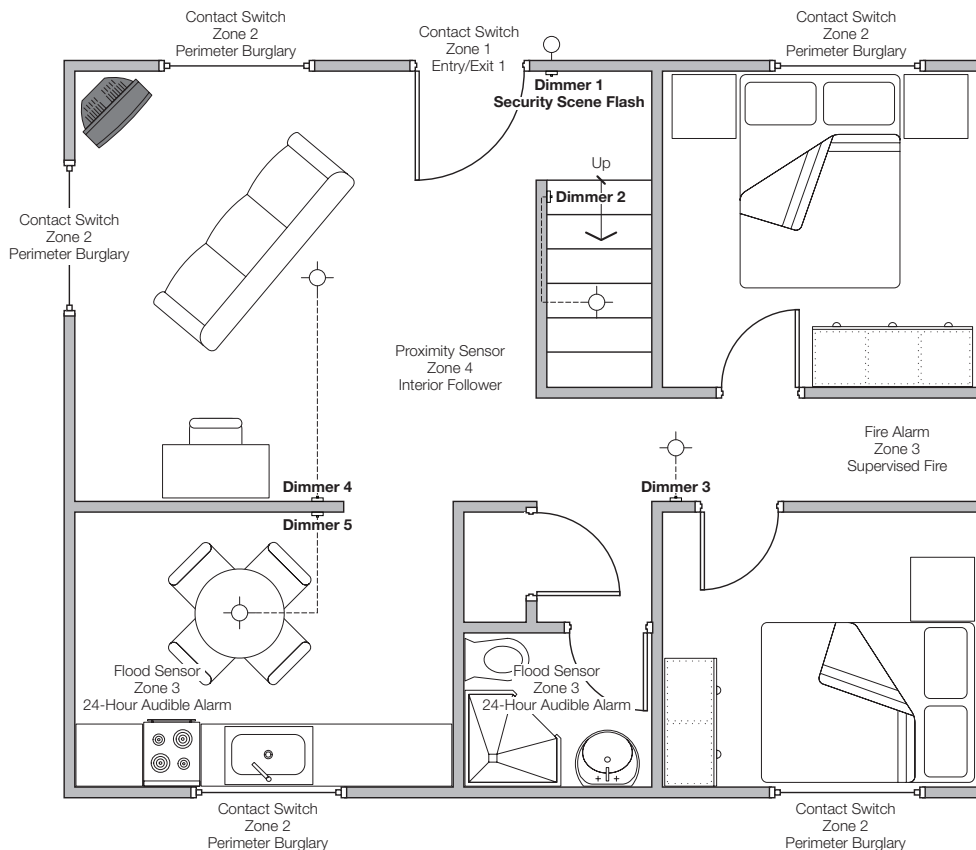
Congratulations! The Honeywell Vista Series Security Panel has been successfully set up to activate the AuroRa Security Lighting Control System via the 4204 Relay Module. The Security Lighting Scene will now be activated by the panel when “any burglary alarm” is activated. The lighting scene will be deactivated when the panel is disarmed following the alarm.

## Advanced Security System Programming

The Honeywell Vista Series Security Panel is capable of a wide range of additional programming options. The sample floor plan from the Sample Configuration section of this application note is shown below. It has been amended to include the Zone Number to which each sensor is connected. This information can be used to develop output functions that trigger the Honeywell Security System based on Zone Lists or a specific Zone Number. An Advanced Programming configuration example is shown below. See the Vista Series manual for additional configuration possibilities.

### Optional Equipment

- Honeywell RF Receiver
- Honeywell RF Transmitter (Key fob)



### Advanced Programming Summary:

For help in developing advanced programming models such as Zone Lists and Zone Numbers, see your Vista Series Panel manual or call Honeywell Security Technical Support at (800) 645-7492.

#### Security Scene

- Activated by Zone List (Zones 1, 2 and 4), Event = Alarm, Action = Stay Closed
- Deactivated by Zone Type (Disarming), Action = Off

#### CCI Scene 1 (Maintained)

- Activated by Zone Type (24-Hour Audible Alarm—Honeywell Zone Type 07), Event = Alarm/Fault/Trouble, Action = Stay Closed
- Deactivated by Zone Type (Disarming—Honeywell Zone Type 22), Action = Off

#### CCI Scene 1 (Momentary)

- Activated by Zone Number (Key fob ON Button), Event = Fault, Action = Close 2 Seconds

#### CCI Scene 2

- Activated by Zone Number (Key fob OFF Button), Event = Fault, Action = Close 2 Seconds

## Honeywell Security Technical Support

(800) 645-7492

## Lutron Worldwide Technical and Sales Assistance

If you need assistance call the toll-free **Lutron Technical Support Center**. Please provide exact model number when calling.

(800) 523-9466 (U.S.A. and Canada)

Other countries call (610) 282-3800

Lutron Electronics Co., Inc.  
7200 Suter Road  
Coopersburg, PA 18036-1299 U.S.A.  
Phone: (610) 282-3800  
Fax: (610) 282-3090

Honeywell and Vista are registered trademarks of Honeywell International Inc., Morristown, New Jersey. Lutron, AuroRa and the Lutron Logo are registered trademarks of Lutron Electronics Co., Inc.  
© 2007 Lutron Electronics, Co., Inc.

---

**Need additional assistance? Call the Lutron Technical Support Center 1-800-523-9466**  
**Please provide exact model number when calling.**