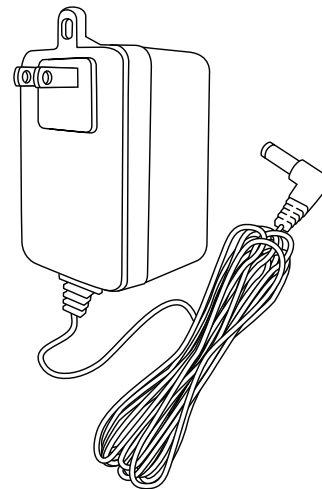


Auxiliary Power Supplies

4/8 Series
Power Supplies
Keypad Link
N/A

The auxiliary power supplies are additional 15 VDC power sources that are used to power additional keypads and contact closure interfaces, when the power supply capacity of the processor is exceeded. A 4 Series P5 processor can power a maximum of 150 LEDs. An 8 Series P5 processor can power a maximum of 350 LEDs. Wireless series processors do not power keypads because each RF keypad is powered locally. For keypad LED counts, see Table 1 on pg. 40.



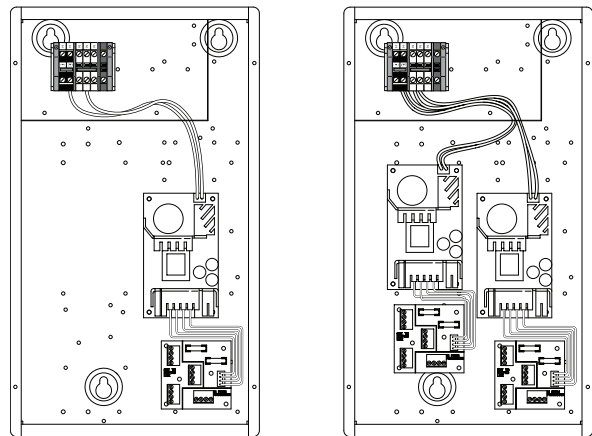
**Plug-In Auxiliary Power Supply
(T120-15DC-9-BL)**

**PLUG-IN AUXILIARY POWER SUPPLY
(MODEL # T120-15DC-9-BL)**

The plug-in auxiliary power supply can power a maximum of 150 additional LEDs.

**WALL-MOUNTED AUXILIARY POWER SUPPLY
(MODEL # PPS1-120-15DC-3A &
PPS2-120-15DC-3A)**

The wall-mounted auxiliary power supplies can power a maximum of 500 additional LEDs (PPS1) or 1000 additional LEDs (PPS2).



**Wall-Mounted Auxiliary Power Supplies
(PPS1-120-15DC-3A and
PPS2-120-15DC-3A)**

Auxiliary Power Supplies (cont.)

Plug-In Auxiliary Power Supply

Model Number	T120-15DC-9-BL: A wall plug-in transformer power supply used to support an additional 150 LEDs on a wired keypad link.
Input Voltage	120 V \sim 60 Hz 19 W
Regulatory Approvals	UL, NOM
Environment	Ambient operating temperature: 0 °C to 40 °C, 32 °F to 104 °F Ambient operating humidity: 0-90% humidity, non-condensing. Indoor use only.
Line-Voltage Connections	Wall plug-in.
Output Voltage	15 V \equiv
Output Current	900 mA
Dimensions	2¼ in (5.715 cm) x 3½ in (8.89 cm) x 2 in (5.08 cm); cord length is 6 feet (1.8 m)
Mounting	Wall plug-in with 6-foot cord must be spliced into keypad link and reach a 120 V \sim receptacle. The transformer may be screwed into the receptacle's faceplate.
Shipping Weight	1.8 lbs. (0.8 kg)

Wall-Mounted Auxiliary Power Supply

Model Number	PPS1-120-15DC-3A: An enclosure-mounted power supply used to support an additional 500 LEDs on a wired keypad link. PPS2-120-15DC-3A: An enclosure-mounted power supply used to support an additional 1000 LEDs on a wired keypad link.
Input Voltage	PPS1-120-15DC-3A: 120 V \sim 50/60 Hz 360 W PPS2-120-15DC-3A: 120 V \sim 50/60 Hz 720 W
Regulatory Approvals	UL, CSA
Environment	Ambient operating temperature: 0 °C to 40 °C, 32 °F to 104 °F Ambient operating humidity: 0-90% humidity, non-condensing. Indoor use only.
Cooling	Passive cooling. Mount in a place where the vented cover will not be blocked.
Heat Generated Fully Loaded	PPS1-120-15DC-3A: 65 BTUs per hr. maximum. PPS2-120-15DC-3A: 130 BTUs per hr. maximum.
Line-Voltage Connections	Use copper wire only, supply conductors 60/75 °C. DIN rail-mounted terminal blocks for power supply feed located at top left corner of panel. Terminal blocks should be tightened to 3.5-5.0 in.-lbs. (0.40-0.57 N•m). <i>See Fig. 3, pg. 184.</i>
DIN Rail Terminal Blocks	Terminal blocks will accept one #18-10 AWG (1.0-2.5 mm ²) wire or two #18-16 AWG (1.0-1.5 mm ²) wires. Terminal blocks should be tightened to 3.5-5.0 in.-lbs. (0.40-0.57 N•m).
Output Voltage	15 V \equiv
Output Current	6 A Max. (3 A max per input/output board)
Dimensions	9¼ in (23 cm) x 17¼ in (44 cm) x 3⅞ in (9.8 cm)
Mounting	Enclosure may be surface-mounted or flush-mounted. <i>See Fig. 3, pg. 184.</i>
Construction	Enclosure: 16-gauge galvanized sheet metal (unpainted). Cover: Painted (black) metal cover with ventilation holes. Attach using four phillips-head screws.
Shipping Weight	13 lbs. (5.9 kg)

Auxiliary Power Supplies (cont.)

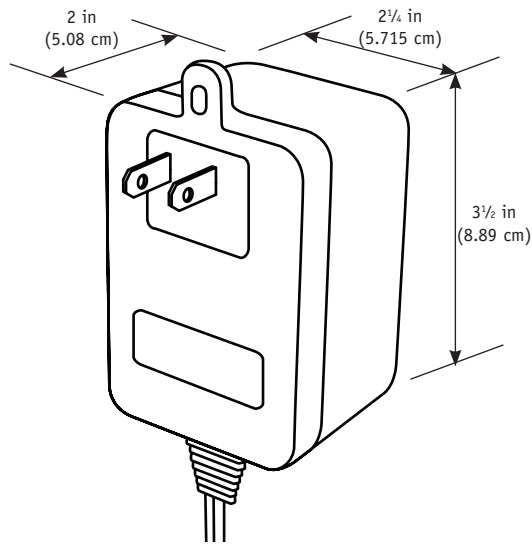


Figure 1 – T120-15DC-9-BL Dimensions

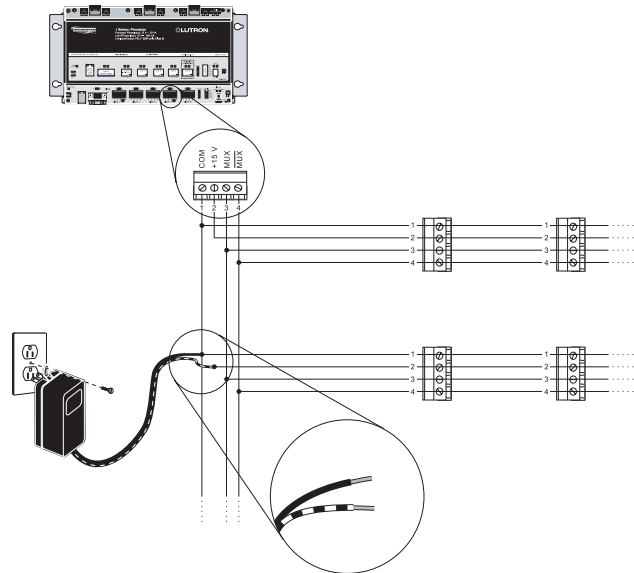


Figure 2 – T120-15DC-9-BL Low-Voltage Wiring

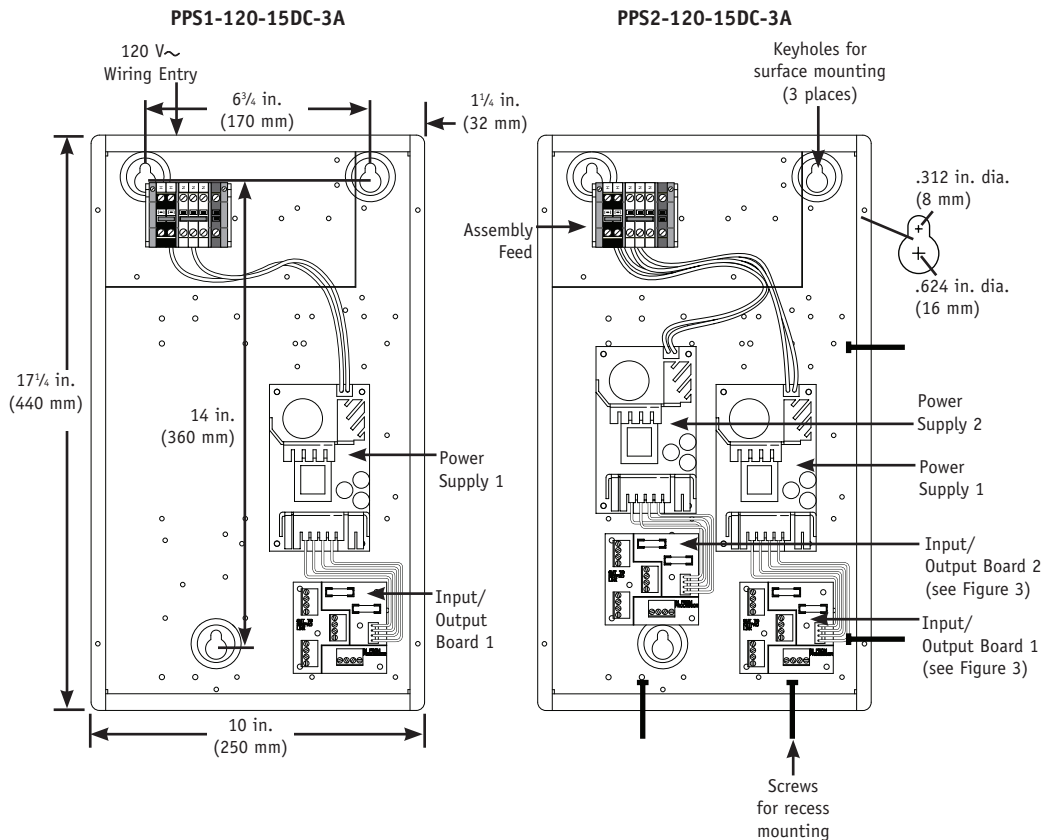


Figure 3 – PPS Dimensions and Mounting

BACK ROOM

Auxiliary Power Supplies (cont.)

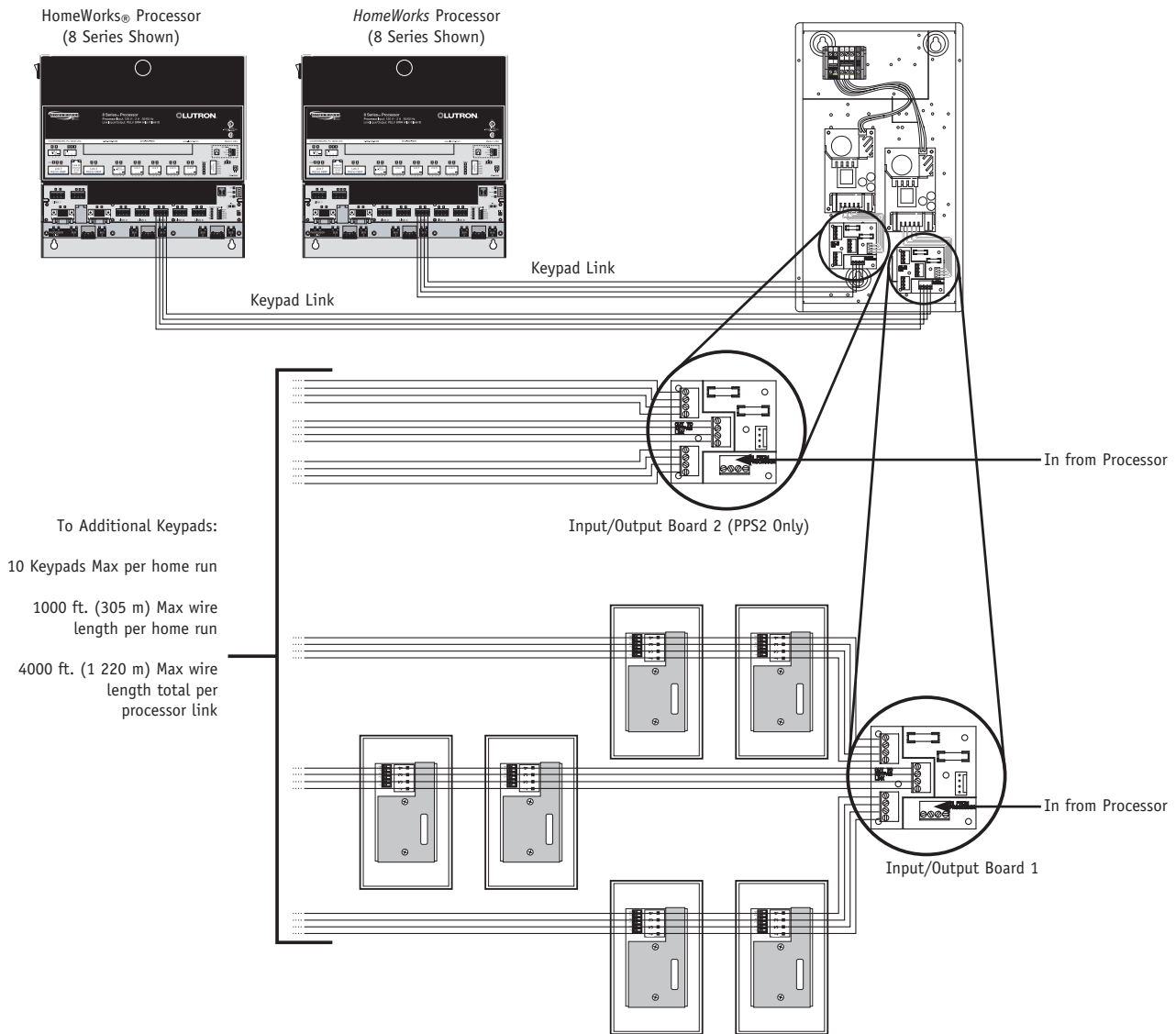


Figure 4 – PPS Low-Voltage Wiring

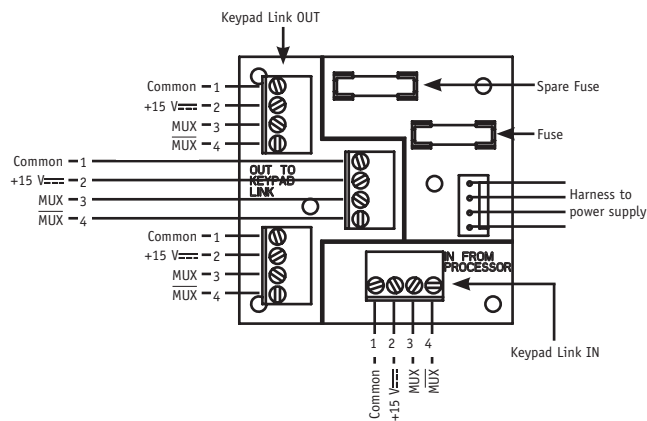


Figure 5 – PPS Input/Output Board Wiring Detail

BACK ROOM