

GRAFIK Eye® 4000 | lighting control for commercial spaces



GRAFIK Eye® 4000 lighting control system

The Lutron GRAFIK Eye® 4000 lighting control system is designed to provide dimming, switching and daylight control. It is ideal for partitionable spaces, retail spaces, public spaces and multi-use areas. Each solution is customised to meet the customer's specific needs.

Set the right mood for each event.

With the touch of a button, recall preset lighting scenes.



Dutournier – Paris, France

Adapt control in partitionable spaces.

Large partitionable spaces call for flexible control options depending on the arrangement of the movable partitions.



Novotel – Paris, France

Architectural and theatrical control from one system.

Temporarily move control of the lighting system to a theatrical sound board for special events.



Grünwald Musikschule – Munich, Germany

Louis Vuitton – Cannes, France



Dimming, switching and shade control from one global manufacturer

Superior performance

With Lutron's exclusive patented Real-time Illumination Stability System (RTISS™) technology, lighting levels remain constant throughout changes in the power line conditions.

Reliability

Lutron design, quality control, performance and delivery are unsurpassed in the industry. Multiple redundant systems ensure uninterrupted operation.

Outstanding service

Lutron representatives and project management teams are ready to help design and specify the right lighting control system for your project. Our global field service organization will commission the installation.

Control Options

Choose from a wide range of control styles, colours and finishes. Add PC-based software for easy set-up and archiving, timeclock integration and sequencing.

Integration

Integrate with occupancy sensors, daylight sensors, daylight control, projection screens, DMX equipment, touch screens and many other types of equipment.



Hilton Hotel – Barcelona, Spain

table of contents

introduction	2-3
lighting control system	4-5
accessories	6-7
colours and finishes	8-9
advanced features and software	10-11

Lutron® | GRAFIK Eye® 4000 lighting control system

Hotel Kudamm – Berlin, Germany

Lighting control system for projects with up to 64 lighting zones

GRAFIK Eye® 4000 is ideal for the following applications:



Auditoriums



Lobbies



Retail Spaces



Houses of Worship



Shopping Centres



Schools

Typical System

- GRAFIK Eye® Control Units.
- GP and/or LP dimming panels with RTISS™ (Real-Time Illumination Stability System) technology to dim lights.
- XP switching panels with Softswitch™ technology for switching lights on and off.
- PC-based set-up software for modeling and control strategies.
- Low-voltage wallstations for local control.

Options

- Contact closure input/output devices to integrate with occupancy sensors, daylight sensors and daylight control/projection screens.
- Shade control to control daylight.
- DMX integration.
- RS232 integration.
- Astronomic timeclock.
- Partition status indicator.

System map GRAFIK Eye® 4000



GRAFIK Eye® Control Units

Various keypads



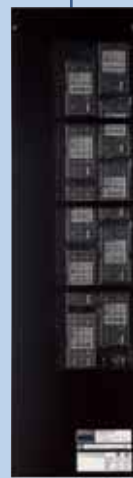
Various Control Interfaces



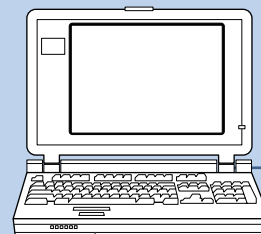
VARIOUS LIGHT SOURCES



GP Panel



LP and/or XP Panel



Getty Center – Los Angeles, USA

System Maximums

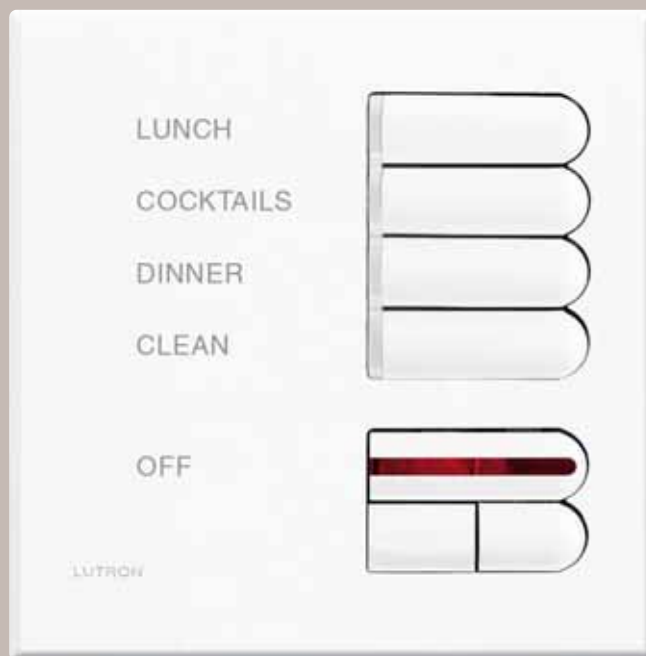
- 64 zones
- 1,024 circuits
- 32 dimming and/or switching panels
- 16 wallstations and/or control interfaces
- 8 main unit addresses
- 128 scenes

seeTouch™



Shown in actual size in white
70mm x 116mm
(Model SG-4SIRN)

European-style



Shown in actual size in white
86mm x 86mm
(Model EGRX-4S-IR)

- On-button engraving is angled up to the eye for easy reading
- Backlit buttons for improved clarity of control functions in low-light conditions
- Optional infrared receiver

- Mounts in a 86mm wallbox
- On-button LEDs indicate system status
- Optional infrared receiver

Architrave™



Shown in actual size in white
44mm x 114mm
(Model GRX-4S-DW)

Architectural



Shown in actual size in white
70mm x 116mm
(Model NTGRX-4PS)

- Mounts in doorjamb to locate control out of site
- Optional clear finish
- Set partition status with a keypad
- Custom engraved wallplates available to match your floor plan

Matte finishes



White WH



Beige BE



Ivory IV



Gray GR



Brown BR



Black BL

Gloss finishes



White GWH



Ivory GIV



Almond GAL



Light Almond GLA

Metal finishes



Satin Brass SB



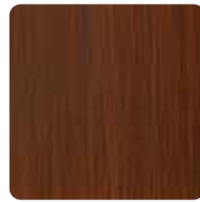
Bright Brass BB



Bright Chrome BC



Antique Brass QB



Antique Bronze QZ



Satin Chrome SC



Satin Nickel SN



Bright Nickel BN



Gold Plated AU



Clear Anod.
Aluminium CLA



Black Anod.
Aluminium BLA



Brass Anod.
Aluminium BRA



**GRAFIK Eye®
Control Unit**



**seeTouch®
keypad**



**Architectural
keypad**



**European-style
keypad**



**Architrave®
keypad****

	Matte	Gloss	Metal
GRAFIK Eye® Control Unit	●	●	●
seeTouch® keypad	●	●*	●
Architectural keypad	●		●
European-style keypad	●*		●
Architrave® keypad**			●*

Notes:

Due to printing limitations, colours and finishes shown cannot be guaranteed to perfectly match actual product colours.

* Not all products are available in all colours. Consult your local Lutron representative for specific colour information.

** Architrave keypad also available in a clear plastic as seen in the photo on the right.



Diners Club Headquarters – Rome, Italy

Integration

Lutron's GRAFIK Eye® 4000 lighting control system integrates seamlessly with other building systems. With Lutron's Contact Closures, Serial Links and Infrared control units you can open up a wide range of possibilities.



Automate lighting control with the astronomical timeclock.



Provide energy savings by utilizing daylight and occupancy sensors to eliminate wasted electricity.



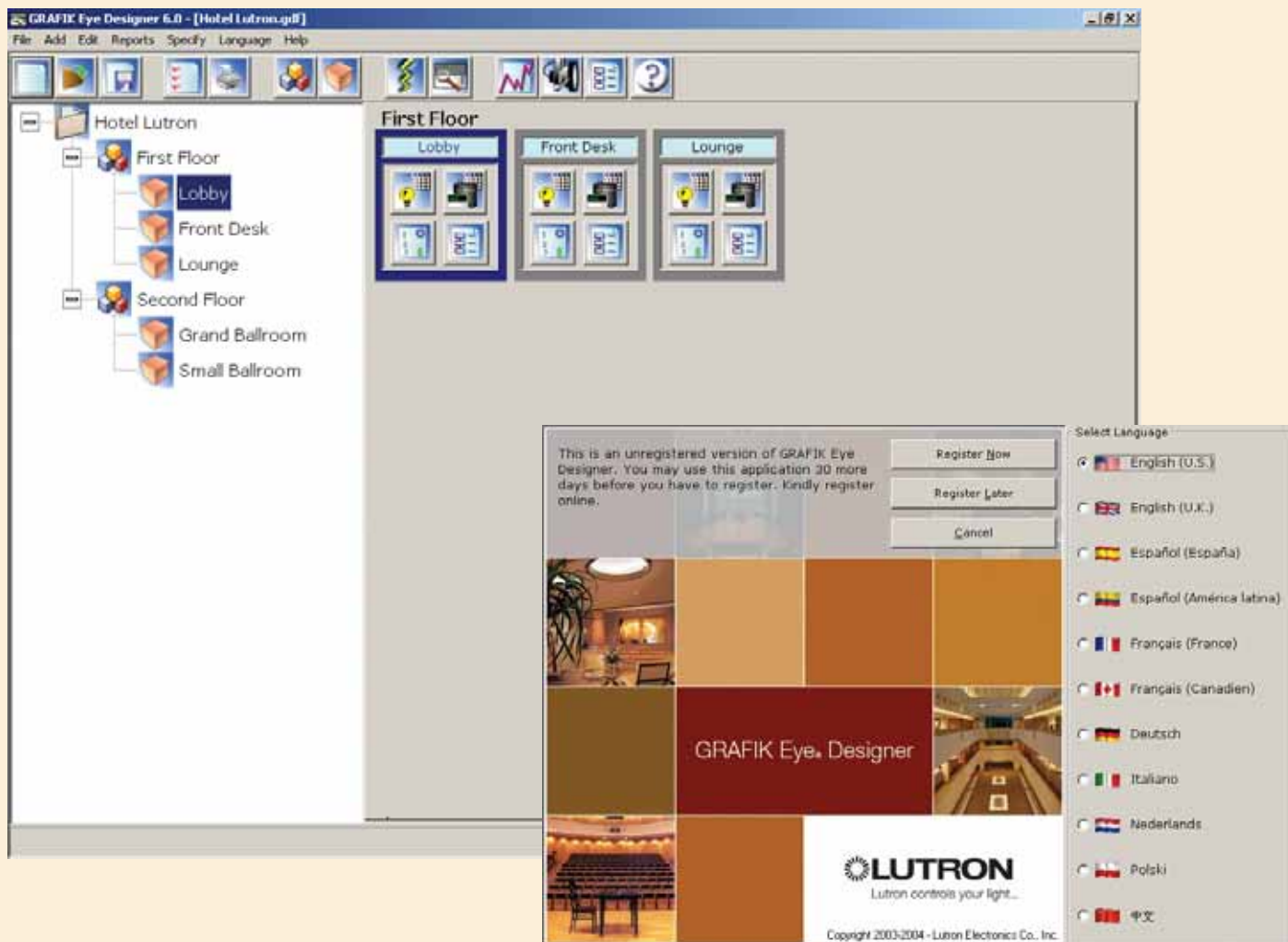
Integrate GRAFIK Eye® control units with third party PCs or A/V equipment.



The 2Link power panel option provides two distinct control links inside each power panel.



Control of lighting can be temporarily transferred to a stageboard when hosting an event or performance in an architectural space such as a house of worship or an auditorium.



Use Lutron's international Designer software to save time and simplify GRAFIK Eye® 4000 system design

GRAFIK Eye® Designer simplifies selection and specification by guiding you through every step of a lighting control design process.

- Save time by importing your lighting load information from a Microsoft® Excel® file.
- Save your favourite fittings for future projects.
- Print out load schedules, materials lists and drawings in any of 12 languages.
- Export your drawings to AutoCAD® dxf or Adobe® pdf files.

**WORLDWIDE
HEADQUARTERS**

Lutron Electronics Co., Inc.
7200 Suter Road
Coopersburg, PA 18036-1299
USA
Toll-free: 1 888 LUTRON1
TEL: +1 610 282 3800
FAX: +1 610 282 1243
intsales@lutron.com

**EUROPEAN
HEADQUARTERS**

Lutron EA Ltd.
6 Sovereign Close
London, E1W 3JF
UK
FREEPHONE: 0800 282 107
TEL: +44 (0)20 7702 0657
FAX: +44 (0)20 7480 6899
lutronlondon@lutron.com

**ASIAN
HEADQUARTERS**

Lutron GL Ltd.
#07-03 Tower Fifteen
15 Hoe Chiang Road
Singapore 089316
TEL: +65 6220 4666
FAX: +65 6220 4333
lutronsea@lutron.com

INTERNATIONAL OFFICES

Brazil: São Paulo

TEL: +55 11 4327 3800

China: Beijing

TEL: +86 10 5877 1818

China: Hong Kong

TEL: +852 2104 7733

China: Shanghai

TEL: +86 21 6288 1473

France: Paris

TEL: +33 1 56 59 16 64

Germany: Berlin

TEL: +49 (0)30 971045-90

India: Bangalore

TEL: +91 80 4030 0485

India: Mumbai

TEL: +91 22 4070 0867

India: Delhi

TEL: +91 124 471 1900

Italy: Milan

FREEPHONE: 800 979 208

Japan: Minato-ku

TEL: +81 3 5575 8411

Spain: Barcelona

TEL: +34 93 496 57 42

Spain: Madrid

TEL: +34 91 567 84 79

UAE: Dubai

TEL: +971 4 299 1224



www.lutron.com/europe

©2012 Lutron Electronics Co., Inc.
01/12 P/N 367-886/EA