

# What's **new** SUMMER 2015



Palladiom™ QS keypad

 **LUTRON**® Innovation. Quality. Service.

## What's new in:

# 2015 New Product Outlook

You want a high performance environment that meets your needs—no matter whether you're a specifier, contractor, distributor, or end user.

Lutron can meet those needs with our full line of scalable light and shade control solutions for every building and residential application.

- Simple energy-saving solutions to quickly and affordably meet or exceed energy costs
- Light control systems that are easy to design, quote, install, and maintain
- Solutions for new markets and applications such as hospitality guestrooms
- Expertise in LED performance dimming control and compatibility
- Intelligent light and shade control for high performing commercial buildings
- Leadership in user experience and intuitive design

### Single Zone Solutions

- Nova T<sup>☆</sup> C•L dimmer . . . . . 2
- Maestro 0–10V dimmer sensor. . . . . 4
- Diva 0–10V dimmer . . . . . 6
- GRAFIK T™. . . . . 8

### Entire Floor Solutions

- PowPak® wireless fixture control . . . . . 10

### Entire Building Solutions

#### Controls

- Quantum Vue™. . . . . 12
- Palladiom™ QS keypad. . . . . 14
- Palladiom thermostat . . . . . 16

#### Shades

- Performance Shading Program. . . . . 18

#### LED Drivers

- EcoSystem™ H-Series . . . . . 20
- Lutron QwikFig™ for Hi-lume™ A-Series . . . . . 22

#### Services

- Title 24 acceptance testing. . . . . 24
- Enhanced software maintenance agreement . . . . . 25

#### eTools

- Lutron Designer+ v8.0 . . . . . 26
- Lutron Designer+ v8.1 . . . . . 27

#### Fixtures

- 3" Finiré® LED recessed lighting . . . . . 28
- Lumaris® LED light bar . . . . . 30

## Hospitality Solutions

- Palladiom QS keypad . . . . . 14
- Palladiom QS thermostat . . . . . 16
- myRoom™ solutions . . . . . 32
- Alena™ hospitality drapery track solutions . . . . . 34

## Residential Solutions

### Controls

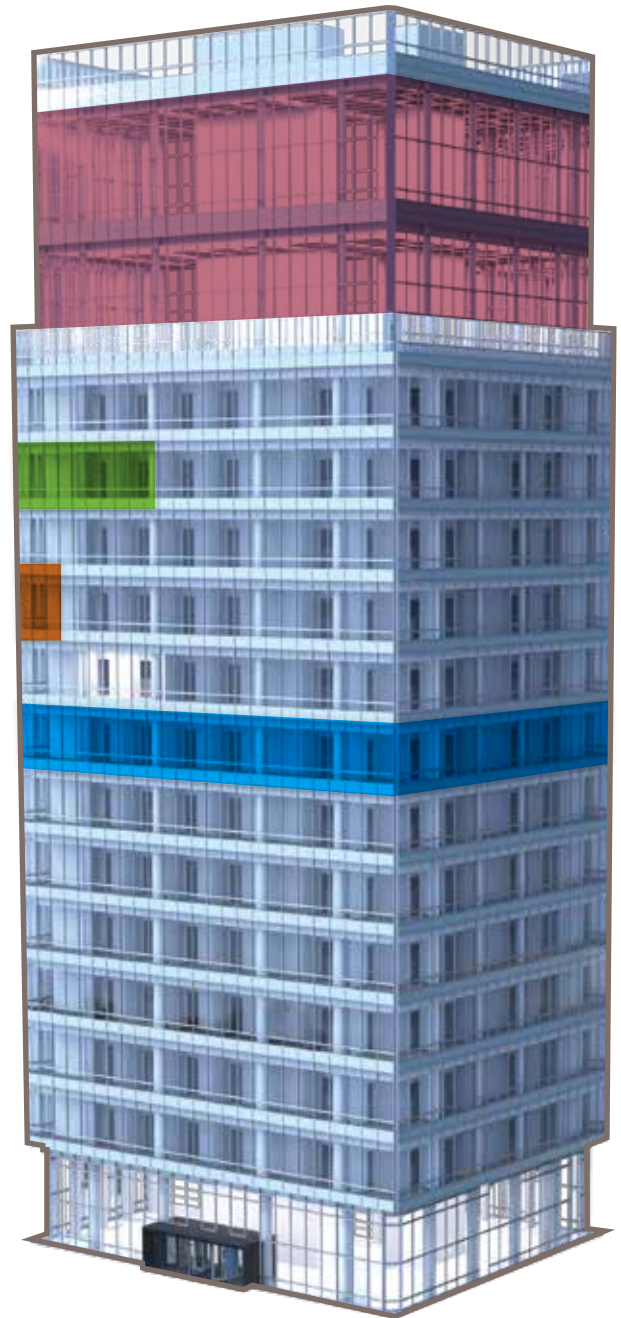
- GRAFIK T . . . . . 8
- Palladiom QS keypad . . . . . 14
- Palladiom QS thermostat . . . . . 16

### Caséta® Wireless

- Dimmer and switches . . . . . 36
- Pico® remote control PRO. . . . . 38
- Lutron app v2.0 . . . . . 40
- Integration partners . . . . . 42

## EcoSystem®

- Updates . . . . . 43



# What's new in Single Zone Solutions

## Nova T☆ C·L dimmer



### The opportunity

- Applications that would traditionally use a Nova T☆, but require control for screw-in LEDs and CFLs

Shipping Now!

### Why did Lutron develop this product?

- To provide a dimmer for screw-in LEDs and CFLs in the Nova T☆ architectural aesthetic

### Lutron C·L dimmers

The Nova T☆ C·L dimmer is the latest addition to our full line of C·L dimmers, which fix the issues with lamp compatibility.

\*(also available with Clear Connect® wireless technology)



Ariadni®  
C·L dimmer



Skylark®  
C·L dimmer

## What does it do?

Dims the following load types:

- 250W of dimmable, screw-in LEDs or CFLs
- 400W of Lutron Hi-lume™ A-Series LTE LED drivers (10 drivers max)
- 1,000W incandescent/halogen

## What are the features and benefits?

- Offers a traditional architectural dimmer solution for high-efficacy loads
- Provides flicker-free dimming with Lutron's patented C•L technology

## How will this solution help my business?

- Distributors — Stock and sell one architectural product that controls incandescents, halogens, LEDs, CFLs, and Lutron LED drivers
- Contractors — Install a dimmer that is compatible with the largest range of dimmable LEDs and CFLs, and that also works with incandescent/halogen lamps
- End users — Nova T☆ C•L can provide best-in-class dimming for all dimmable screw-in lamps, creating the right ambiance for your space

**Ideal for:** Retail, restaurants, and ballrooms



Skylark Contour®  
C•L dimmer



Diva®  
C•L dimmer



Maestro®  
C•L dimmer\*



GRAFIK T™  
C•L dimmer\* **NEW**



Nova T☆  
C•L dimmer **NEW**

# What's new in Single Zone Solutions

## Maestro® 0–10V dimmer sensor



### The opportunity

- 0–10 V is one of the most common dimming technologies, and has recently grown as a base option for many fixture manufacturers
- Title 24 and ASHRAE 90.1.2010 require occupancy sensing and multi-level lighting control in small spaces

Shipping Now!

### Why did Lutron develop this product?

- To provide a simple, single wallbox solution to meet codes while controlling widely available 0–10V fixtures

### Sensor family

The Maestro 0–10V dimmer sensor is the latest addition to our full line of in-wall sensors, which use XCT technology for superior sensing



PIR sensor switch



PIR dual-circuit  
sensor switch

## What does it do?

- Combines dimming of 0–10V fixtures and occupancy/vacancy sensing one easily installed device
- Provides sinking control for 0–10V LED and fluorescent sourcing fixtures
- Provides superior fine motion detection with exclusive Lutron XCT™ PIR technology

## What are the features and benefits?

- One simplified solution — combining 0–10V dimming and PIR sensing into one device saves time and money
- Optimized dimming performance with selectable dimming curve, locked presets, and high- and low-end trim
- Superior sensing performance with XCT technology and smart ambient light detection
- Simplified installation and setup
  - Easy button-press setup: No dip switches or dials
  - Miswire or Incompatible Load Alert — flashes the lens and converts to a switch if:
    - 0–10V polarity is reversed
    - Wired to a sinking fixture

## How will this solution help my business?

- Specifiers — Capitalize on integrated dimming technology and simplify design work by offering one wallbox device for dimming and sensing
- Contractors — Save time and money with a streamlined product for quicker installation and lower material costs. Superior technology and out-of-box functionality ensure no callbacks.
- Distributors — Leverage this innovative product to show the Lutron sensor advantage. One part number works for multiple applications: 120-277V, neutral optional, 3-way, or single pole.

**Ideal for:** Private offices, conference rooms, training rooms, small break/lunch rooms, hospitality guestrooms



C•L® dimmer sensor



0–10V dimmer sensor **NEW**



Dual-technology sensor switch **NEW**



Dual-technology, dual-circuit sensor switch **NEW**

# What's new in Single Zone Solutions

## Diva® 0–10V dimmer



### The opportunity

- 0–10V is one of the most common dimming technologies, and has recently grown as a control option with many LED fixture manufacturers

Shipping Now!

### Why did Lutron develop this product?

- To provide a 3-way dimmer for 0–10V LED and fluorescent fixtures in Lutron's most popular dimmer aesthetic

### 0–10V single room solutions

Lutron offers a variety of 0–10V control options to give you both high-quality dimming capabilities and additional opportunities to save energy. These control options allow you to take advantage of multiple energy-saving strategies.



Diva 0–10V  
dimmer

**NEW**



Nova T★  
0–10V dimmer



Maestro® 0–10V  
dimmer sensor



## What does it do?

- Provides dimming control of 0–10V sourcing fixtures, LED drivers, and fluorescent ballasts that require a sinking control
- Supports 120V through 277V; 8A load current
- Provides 3-way preset switching functionality
- Works with wired occupancy/vacancy sensors (LOS series) with the addition of a wired power pack (PP-DV)

## What are the features and benefits?

- User adjustable high-end and low-end trim for optimal performance
- Patented technology extends relay life to 10 years
- Easy retrofit with no neutral and no power pack required
- Diva is the most complete line of matching lighting controls, fan-speed controls, and accessories

## How will this solution help my business?

- Distributors — Stock and sell this product to provide a 0–10V dimmer solution from the leader in lighting controls
- Contractors — Install a Lutron quality dimmer for 0–10V fixtures
- End users — Diva 0–10V can provide best-in-class dimming for 0–10V fixtures

**Ideal for:** Conference rooms, classrooms, offices, banquet halls, patient rooms, museums, auditoriums



PowPak® dimming module with 0–10V control



Radio Power Savr™ occupancy and daylight sensors, and Pico® wireless remote (works with PowPak 0–10V)



PowPak wireless fixture control and PowPak fixture sensor with 0–10V control **NEW**

# What's new in Single Zone Solutions

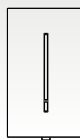
## GRAFIK T™



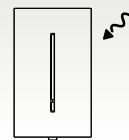
### The opportunity

- Modern, design-oriented light commercial spaces, such as Class A offices, high-end restaurants, and higher education applications, as well as high-end residences and urban apartment complexes, are a perfect match for the beauty and style of GRAFIK T

- Non-RF dimmer and switch — **Shipping Now!**
- RF dimmer and switch — **Shipping Now!**
- QS slider — **Shipping May 2015<sup>†</sup>**

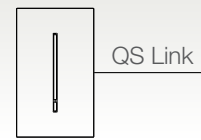


**Non-RF dimmer and switch**  
Standalone device only



**RF dimmer and switch**  
Compatible systems

- RadioRA® 2
- HomeWorks® QS



**QS slider**  
Compatible systems

- Quantum®
- HomeWorks QS

### Why did Lutron develop this product?

- To revolutionize the way people think about dimming, and to strengthen Lutron's position as a leader in technology and design

### What does it do?

Dimmer controls the following load types:

- 250W of dimmable, screw-in LEDs
- 400W of Lutron Hi-lume™ A-series LTE LED drivers (10 drivers max)
- Other loads: 600W incandescent/halogen, 400VA of MLV

Switch compatible with the following load types:

- 5A of general lighting loads
- 3A fan, 1/10HP motor

<sup>†</sup> Quantum version 3.1 is required for GRAFIK T QS slider to work in Quantum systems. Approval required until January, 2016.

## What are the features and benefits?

- Quiet elegance for any space — minimalist design complements residential and commercial interiors
- Easy-to-use touch control — responsive to the lightest touch and slightest motion
- A solution for any project
  - C•L® dimmer is perfect for single room applications, bedrooms, bathrooms, home theaters
  - RF C•L dimmer is perfect for wireless system applications, executive offices, conference rooms, homes
  - QS slider is perfect for wired system applications, whole floor or building systems (Quantum), and large home systems (HomeWorks QS)
- Advanced technology
  - C•L technology provides high-performance dimming and ensures compatibility with the broadest range of LEDs
  - Clear Connect® RF technology allows for reliable RF communication with Lutron's complete line of GRAFIK T controls, including controls with architectural metal wallplates

## How will this solution help my business?

- This clean, intuitive design and effortless operation elevate the user experience and set a new standard for lighting control — no knobs, sliders, or buttons, just *touch*.

**Ideal for:** High-end conference rooms, executive corner offices, hospitality common spaces, high-end retail, restaurants, bars, and spas

## GRAFIK T Family

- Available in over 40 colors and finishes to complement any décor



Clear Glass  
**CWH**



Satin Chrome  
**SC**



Satin Nickel  
**SN**



Brass Anodized  
**BRA**



Black Anodized  
**BLA**

# What's new in Entire Floor Solutions

## PowPak® wireless fixture control



PowPak wireless fixture control and PowPak fixture sensor

### The opportunity

- Existing building retrofits remain a large area of growth for the lighting and control industry, and new energy codes require the implementation of lighting controls more than ever before
- Wireless technology significantly reduces the challenges, risk, and labor costs associated with adding lighting control to existing buildings

Shipping May 2015

## Why did Lutron develop this product?

- To provide a simple, flexible, retrofit lighting control solution for individual fixtures without additional wiring

## Energi TriPak® Family

Different spaces have different needs; with the complete Energi TriPak offering, only Lutron has a solution to address all of them



Radio Power Savr™ occupancy and daylight sensors



Pico® wireless remotes

## What does it do?

- Adds wireless control to each individual 0–10V or EcoSystem™ fixture in a space
- Enables combined occupancy detection and daylight harvesting at the individual fixture level
- Works with Radio Powr Savr™ wireless sensors and Pico® wireless controls

## What are the features and benefits?

- Simple to design and estimate — just count the fixtures
- No additional wiring
  - Works with existing high voltage wiring, no matter the layout
  - No new wiring between fixtures
- Works out of the box — no complex computer programming
  - Occupancy sensing, daylighting harvesting, and dimming with no commissioning
  - Add personal wireless remote control with a button press or green laser
- Proven Lutron technology means no call-backs

## How will this solution help my business?

- Electrical Contractors/ESCOs —
  - Reduce labor costs and risk with step-and-repeat installation — as easy as a ballast replacement
  - Improve the accuracy of labor estimates by eliminating the risk of unforeseen problems cropping up during installation
- Specifiers — Design an entire space in just minutes — simply count the number of fixtures
- Facility Managers — Adjust zones or add devices to maximize energy savings as your space changes, without rewiring

**Ideal for:** Open floorplans, hard-to-wire spaces, retrofit spaces with unknown or unclear existing wiring



Maestro® wireless dimmers and switches



PowPak dimming or relay modules

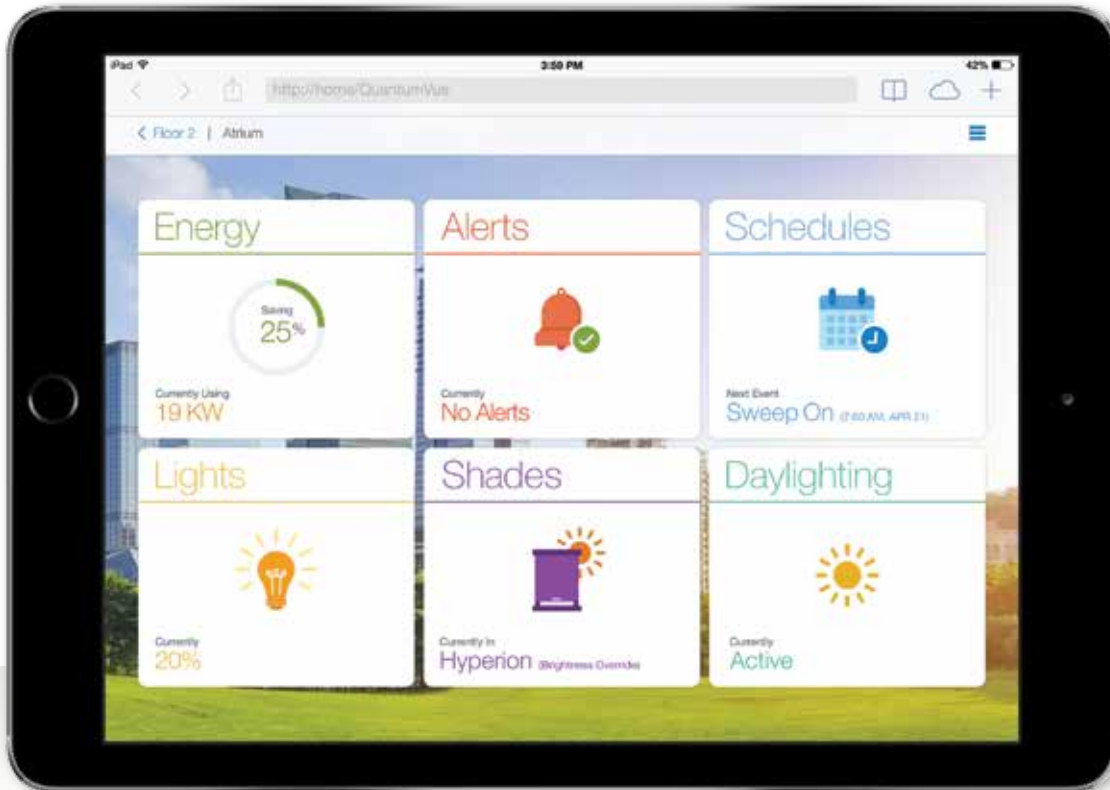


PowPak wireless fixture control and PowPak fixture sensor

**NEW**

# What's new in Entire Building Solutions

## Controls — Quantum Vue™



Available Now!

### Why did Lutron develop this product?

- To bring our software up to the same world class level of quality as our hardware, creating an exceptional experience for facility and sustainability managers

### What does it do?

- Enables facility managers to monitor, maintain, and optimize a Quantum® system from anywhere. Works with new or existing Quantum systems.

### The opportunity

- Quantum Vue ease of use, mobility, and overall customer experience puts it in a class of its own
- New web-based platform along with flexible user management allows for a more IT-friendly installation that can scale from a single floor or a multi-tenant fit-out, to a campus of connected buildings

## What are the features and benefits?

- Web-based; run on any device connected to the building network, no need to install anything
- Designed for tablet, PC, and smartphones — useful information and real-time adjustments at your fingertips
- Quickly navigate your space using a built-in graphical floorplan
- High-level dashboard for your campus, building, and area provides what you're looking for quickly and easily
- Visualize energy savings ROI, and energy savings broken out by strategy
- Grant multiple user access rights according to specific areas or features

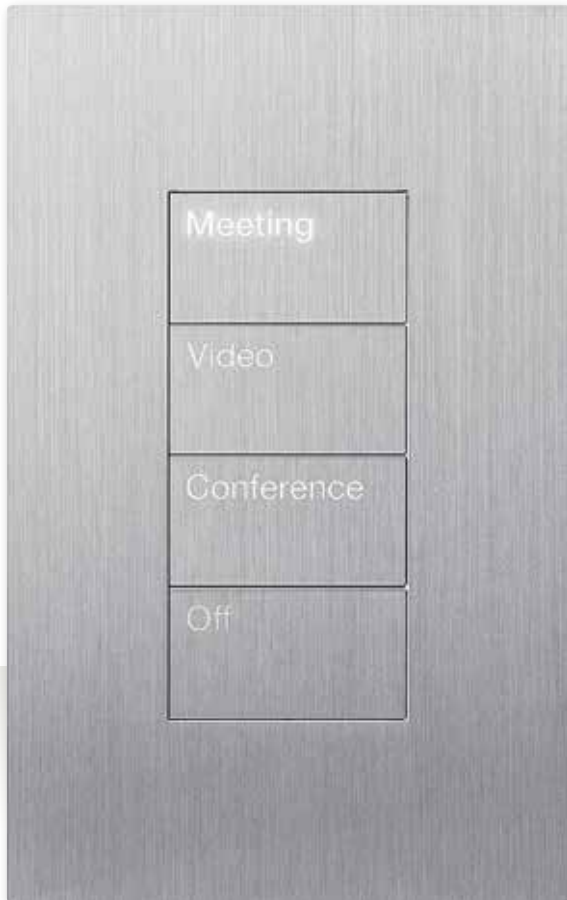
## How will this solution help my business?

- Specifiers — Backed by Lutron's unparalleled service and reliability, Quantum now delivers a best-in-class customer experience through software and services
- Property managers/campus managers — Lutron systems are now easier to manage across multiple buildings and applications, making operations a breeze. Resolve maintenance tasks faster without the need to call Lutron services.
- Facility managers — Quantum will make your job easier by providing the information you need, when you need it and how you need it, to manage your building. You can now make changes and troubleshoot issues faster and easier than ever.
- Sustainability managers — Easily monitor building performance from the comfort of your desk. Compare and contrast the performance of different energy-saving strategies (such as occupancy sensing, daylighting, and tuning) in order to figure out what's working/how to save more energy.

**Ideal for:** Commercial office buildings, college campuses and K-12 schools, hospitality public areas, stadiums and convention centers, restaurants and retail spaces

# What's new in Entire Building Solutions

## Controls — Palladiom™ QS keypad



### The opportunity

- This sleek and intuitive keypad marries function and design and is the perfect solution for:
  - High-end residences/MDUs
  - 4- and 5-star hotel guestrooms
- High-end commercial applications such as restaurants, retail spaces, ballrooms, and conference rooms

### Taking Orders Now!

Hotel Guestroom Mockups — **Available Now!**

Plastic and Glass — **Shipping July 1, 2015\***

Metal — **Shipping September 1, 2015\***

### Why did Lutron develop this product?

- To maintain our leadership position in world-class product design and expand our architectural control options for design-conscious customers

### What does it do?

- This global family of customizable wired QS keypads controls lights, shades/drapes, and HVAC, and works with HomeWorks® QS, Quantum®, and the new myRoom™ Plus hospitality guestroom solutions

\* Quantum version 3.1 is required for Palladiom to work in Quantum systems. Approval required until January, 2016.



## What are the features and benefits?

- Provides subtle elegance with architectural design
- Customizable button layout and programming accommodates virtually any function
- Available in U.S.-style (rectangular) or international-style (square) wallplate aesthetic
- Buttons and faceplates are made from the same material — plastic, glass, or metal — for a coordinated aesthetic
- Large, tactile buttons with backlit, engraved text are easy to find and operate
- Field-replaceable buttons allow for customization in the field
- Available in a variety of aesthetic options to suite a wide variety of applications

## How will this solution help my business?

- Architects, lighting designers, interior designers, and high-end homeowners — Palladiom QS keypads provide a beautiful architectural aesthetic with a sleek minimalist design to complement any décor
- Hotel brands and owners — Combine with a Palladiom QS thermostat (see page 16) and the myRoom Plus solution (see page 32) to create a memorable guest experience with elegant, intuitive controls

**Ideal for:** High-end residences and MDUs, 4- and 5- star hotel guestrooms, high-end commercial applications such as restaurants and retail spaces, ballrooms, and conference rooms

## Palladiom keypads

Aesthetic options for every project and price point. Palladiom keypads control lights and shades in any application.



Clear Glass  
**CWH**



Black Plastic  
**BL**



Satin Nickel  
**SN**



Bright Brass  
**BB**

# What's new in Entire Building Solutions

## Controls — Palladiom™ QS thermostat



### Taking Orders Now!

Hotel Guestroom Mockups — Available Now!

Plastic and Glass — Shipping July 1, 2015

Metal — Shipping September 1, 2015

### Why did Lutron develop this product?

- To create the best looking thermostat for guestroom applications
- To offer a matching aesthetic to the Palladiom QS keypad (see page 14), for a coordinated guestroom installation

### What does it do?

- Measures temperature, occupancy, and humidity for myRoom™ Plus guestroom solutions, and works with external HVAC control unit to heat or cool the room

### The opportunity

- Hundreds of thousands of guestrooms are built or renovated globally each year in the 4- to 5-star market; a thermostat is always required in the room
- Guestroom thermostats are typically not aesthetically appealing
- Guestroom thermostats aren't always aesthetically coordinated with the other controls in the space

## What are the features and benefits?

- Matches Palladiom QS keypad design for a beautiful installation
- Large screen is easy to read
- °C | °F button on the unit allows for easy accessibility to a global audience
- Available in plastic, glass, and metal finishes
- Reinforced, tamper-resistant PIR occupancy sensor uses XCT™ technology
- Two-piece solution provides flexibility for a wide variety of HVAC options
- Large, tactile buttons with backlit text are easy to find and use

## How will this solution help my business?

- Architects, lighting designers, and interior designers — Palladiom QS thermostats provide a beautiful architectural aesthetic with a sleek, minimalist design to complement any décor
- Hotel brands and owners — Combine with a Palladiom QS keypad and the myRoom Plus solution to create a memorable guest experience with elegant, intuitive controls

**Ideal for:** myRoom Plus solutions — targeting 4- and 5-star hotel rooms

## Palladiom QS thermostats

Aesthetic options for every project and price point. Palladiom QS thermostats control temperature with style.



Clear Glass  
**CWH**



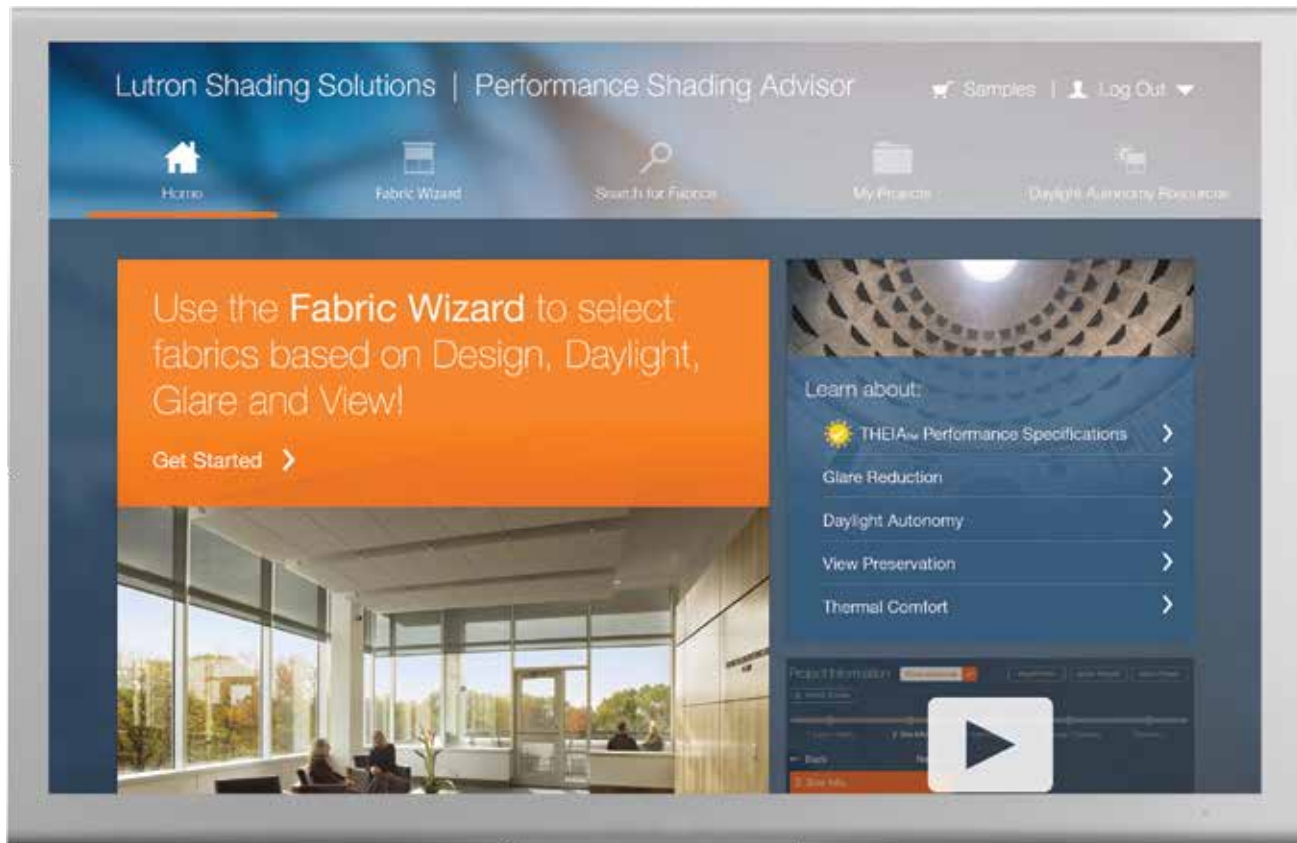
Satin Nickel  
**SN**



Black Plastic  
**BL**

# What's new in Entire Building Solutions

## Shades — Performance Shading Program



New Fabric Wizard

**Available Now!**

### **This program includes:**

- Performance Shading Advisor with Fabric Wizard
- THEIA™ Performance Specification
- Performance Fabric Collection
- Performance Shading Solutions binder

### **The opportunity**

Today, fabrics are specified on aesthetics alone. However, proper fabric selection is a key element to creating a space with maximized daylight autonomy, minimal glare, and optimal occupant comfort.

## Why did we develop this program?

To change the way shades and fabric are specified in commercial spaces based on the ideal balance of performance and aesthetics

## What does this program do?

- Recommends solar screen fabrics for optimal balance of glare reduction, daylight autonomy, and view preservation without sacrificing aesthetics

## What are the features and benefits?

### Performance Shading Advisor

An innovative new software tool that makes the complex process of selecting shading fabrics based on multiple performance priorities and aesthetics easy

- Enter project-specific inputs for a selection of optimal fabric results that maximize shading system performance
- Search and filter fabrics by priorities
- Save projects, store fabrics, and even order fabric samples
- Generated report output

### THEIA™ Performance Specification

An industry first fabric specification that ensures the performance properties of openness factor and visual transmittance are tightly controlled in order to accurately and predictably meet the design intent of a space

### Performance Fabric Collection

A refined collection of solar screen fabrics with focused categories specifically designed to meet the performance needs of the core commercial market

- Includes high-running Lutron commercial solar screen fabrics along with some new performance and sustainable fabrics

### Performance Shading Solutions binder

Comprehensive and easy-to-use binder guides users to the fabrics for their specific needs

- Features the Performance Fabric collection organized into four easy-to-use decks
- Brochure/guide to explain the program and direct customers to the Performance Shading Advisor, to help them search for optimal fabrics based on their specific project parameters

# What's new in Entire Building Solutions

## LED Drivers — EcoSystem™ H-Series



- OEM Samples — **Shipping Now!**
- 75W troffer/linear driver — **Shipping Now!**
- 40W downlight driver — **Shipping in Limited Quantities!**

### Why did Lutron develop these products?

- To meet the customer need for guaranteed flicker-free architectural dimming
- To eliminate compatibility issues between the control and the fixture
- To bring 1% dimming and EcoSystem control to LED troffers and linears
- To create an incandescent-like experience when dimming LEDs

### What do they do?

- Dim LED downlights, troffers, linears, and recessed and pendant lighting down to 1%

### The opportunity

- LED lighting is rapidly becoming the default option for new construction and major renovation
- There is little standardization in the market, which results in inconsistent performance, flicker, and control compatibility issues
- Customers are looking to meet sustainability, energy efficiency, and aesthetic goals. In order to meet those goals, they expect more flexibility and control from their lighting systems than they get from fluorescent lighting

## What are the features and benefits?

### LED drivers

- Performance
  - Smooth, flicker-free dimming down to 1%
  - Fast turn-on from off eliminates the popcorn effect when lights turn on in a space
  - An incandescent-like dimming experience with Soft-on, Fade-to-Black™
  - Meets NEMA inrush standards to eliminate false breaker tripping
- Compatibility
  - All drivers are engineered and tested to guarantee compatibility with Lutron controls

### EcoSystem digital control

- Performance
  - Precise light level control
  - Immune to electrical noise that can cause lights to flicker at low levels
- Individual fixture control
  - Control individual fixtures or groups of fixtures
  - Report power usage and failures
  - Repurpose your space without rewiring

## How will this solution help my business?

- Lutron works with any LED fixture manufacturer to bring reliable, high performance dimming to the fixtures you choose
- Use EcoSystem to layer all energy-saving strategies — such as daylight harvesting, occupant sensing, high-end trim, and load shed — to maximize energy saving in any space without compromising the user experience
- Smooth, flicker-free dimming down to 1% creates the perfect experience for conference rooms, ballrooms, auditoriums, boardrooms, executive offices and restaurants
- Soft-on, Fade-to-Black™ creates a pleasing, incandescent-like experience from any LED fixtures
- EcoSystem guarantees compatibility and performance, eliminating mistakes and delays on a job

**Ideal for:** Open offices, private offices, conference rooms, auditoriums, classrooms, restaurants, and hospitality

# What's new in Entire Building Solutions

## LED Drivers — Lutron QwikFig™ for Hi-lume™ A-Series



Nest configurator



Easy-to-use software



Hi-lume™ A-Series

### Why did Lutron develop this product?

- To provide a solution to simply and quickly configure drivers to meet changing market and LED light engine needs
- To provide the ability to take seven base models and configure them into 1,000 unique SKUs, improving customer delivery time
- To reduce time and cost to UL List new Lutron drivers with OEM fixtures
- To allow OEMs to supply Lutron LED drivers on fast-paced or discretionary projects

### The opportunity

- OEMs can quick ship fixtures with EcoSystem®
- OEMs can deliver customized fixture options (length, lumen output, color temperature) quickly

**Shipping Now!**



### **What does it do?**

- QwikFig allows OEMs to stock and configure Lutron Hi-lume A-Series LED drivers on demand, at their manufacturing location.
- The OEM orders a configuration kit from Lutron that consists of a “Nest” configurator and a label printer, and then receives special configuration software via a personalized myLutron account that is set up when the OEM enrolls in the program.
- The OEM orders “blank” bulk LED driver units from Lutron based on his need and configures these to his specific lighting products at his manufacturing facility.

### **What are the features and benefits?**

- QwikFig improves Lutron LED driver delivery lead times; it allows OEMs to stock high volume, bulk LED drivers that they use on a regular basis and not have to wait 10 business days (Lutron’s standard lead time for drivers)
- OEMs can stock fewer models of Lutron LED drivers to meet all of their driver needs
- OEMs can earn freight prepaid (ground) on 10-case or more bulk LED driver orders

### **How will this solution help my business?**

- Now, lighting fixture manufacturers that need to meet their customers’ fast-paced or discretionary project requests do not have to custom order LED drivers for each project
- Specifiers or design build contractors — specify Lutron on fast-paced jobs where you need products on site quickly

# What's new in Entire Building Solutions

## Services — Title 24 Acceptance Testing

### Why did Lutron develop this test?

To meet the Acceptance Testing requirements for this strict, new building code

### What is its purpose?

This service satisfies the requirements for the interior Lighting Control Acceptance Testing required by Title 24. It's performed by a Lighting Control Acceptance test technician certified in the state of California.

### What are the benefits?

- Lutron system start-up paired with Lutron testing means fast testing turnaround
- Our technicians are factory trained, with expertise in functional testing
- Proves the system was thoroughly tested, providing peace of mind to end users

### The opportunity

- Under the new California 2013 Building Energy Efficiency Standards — Title 24, Part 6 — all permitted non-residential construction projects require that the lighting system be functionally tested by a certified technician

**Available Now!**

## How will this solution help my business?

This test is required in California. You're guaranteed that the Lutron system was thoroughly tested.

**Ideal for:** All permitted non-residential construction projects in California

## Services

Lutron offers a broad portfolio of services to support you from initial design through implementation, ongoing management, and continual improvement of your lighting/shade control systems.



**Onsite  
Services**



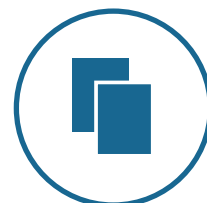
**Remote  
Services**



**Telephone  
Services**



**Training  
Services**



**Documentation  
Services**

# What's new in Entire Building Solutions

## Services — Enhanced Software Maintenance Agreement

### Why did Lutron develop this agreement?

To extend the reach of our Software Maintenance Agreement, since Quantum Vue™ is web-based

### What does it do?

- Protects and minimizes against system interruptions from operating system (iOS and Windows) and web browser updates (Chrome, Safari, and Internet Explorer)

### What are the features and benefits?

- Eliminates risk of system downtime from operating system and web browser updates
- Lutron tests your specific platform configuration
- Lutron sends notifications on a regular basis ensuring you know of any issues
- Lutron proactively builds custom patches in the case of an issue

### The opportunity

- Medical facilities, such as hospitals, and revenue-generating hospitality and retail spaces, require minimal service interruptions

**Available Now!**

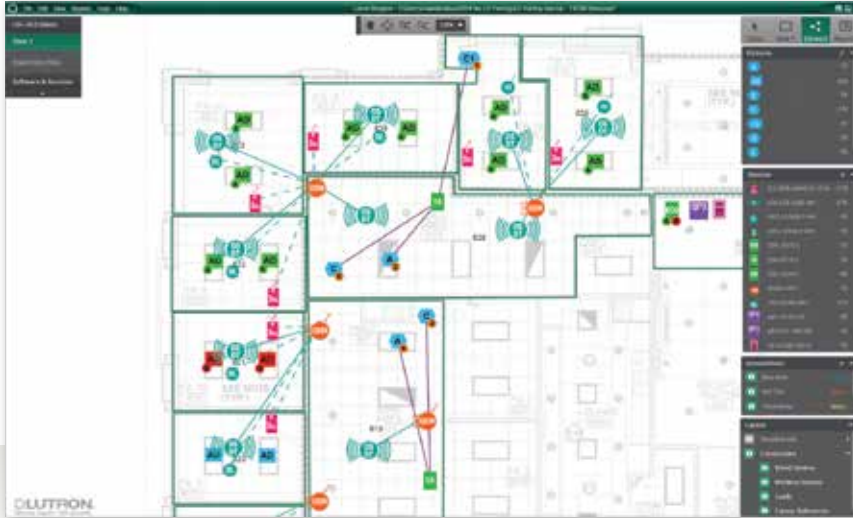
## How will this solution help my business?

Web browsers and operating systems update frequently throughout the year. All new Quantum Vue customers or customers upgrading to Quantum Vue: Protect yourself from potential interruptions and revenue loss due to frequent web-browser updates.

**Ideal for:** All Quantum Vue projects

# What's new in Entire Building Solutions

## eTools — Lutron Designer+ v8.0



Available Now!

**NEW** intuitive “Connect” mode makes design considerably faster

### Why did Lutron develop this release?

To drastically increase the speed of conducting a design/take-off for commercial systems and to support additional engraving options

### What are the major new features?

- Directly connect lighting fixtures/loads with Lutron devices on Canvas View, a user interface mode that supports graphically interacting with the reflected ceiling plan, and automatically updates the One-line Diagram, System Layout Report, and Panel Schedules
- Multi-select loads/fixtures/devices and replace with new products based on new customer requirements
- Specify and design faceplate engraving for keypads
- Design systems with 20A Energi Savr Node™, Pico® 4-button wireless control, Maestro® 0–10V dimmer sensor, Maestro dual-technology sensor switch, and Maestro dual-circuit occupancy sensor switch

### What are the benefits?

- Significantly reduce your customer response time and increase your service levels
- Lock in faceplate engraving earlier in the commercial job process

**Ideal for:** Any commercial project that requires in-wall occupancy sensors, Energi TriPak®, GRAFIK Eye® QS, Energi Savr Node, and/or Quantum®

# What's new in Entire Building Solutions

## eTools — Lutron Designer+ v8.1

### Why did Lutron develop this release?

To design control systems faster and with greater accuracy using the latest Lutron products

### What are the major new features?

- Design myRoom™ Prime and Plus systems and generate corresponding project documents, such as One-line Diagrams, System Layout Reports, Bills of Material, and Sequence of Operations
- Using built-in design rules, accurately design systems with Lutron LTE LED drivers
- Graphically define lighting zones in the Canvas View
- Toggle on and off the display of occupancy sensors' coverage in the Canvas View
- Specify Lutron Elective Services on the One-line Diagram
- Use Lutron Designer+ in Spanish

### What are the benefits?

- Design hospitality applications and generate corresponding project documents with greater speed and accuracy
- Provide value-added design service with more accurate occupancy sensor and LED driver control system designs
- Incorporate Lutron Elective Services earlier in the commercial job process
- Allow Spanish-speaking users to effectively use the software

### Key customers:

- Lutron commercial sales
- Lutron commercial rep agencies
- Distributors outside North America
- Lighting designers, electrical engineers, design-build contractors, electricals distributors, or ESCOs, who have strong Lutron product knowledge

**Ideal for:** Any commercial project that requires in-wall occupancy sensors, Energi TriPak®, LED drivers, myRoom, GRAFIK Eye® QS, Energi Savr Node™, and/or Quantum®

### The opportunity

The need for shorter response times, higher quality service, and accurate designs for commercial business opportunities

**Available June 2015**

# What's new in Entire Building Solutions

## Fixtures — 3" Finiré® LED recessed lighting



### The opportunity

- High-end residential and architectural markets desire high quality LED fixtures with outstanding performance that will guarantee smooth dimming
- These markets also desire small profile fixtures that work in various applications in the same space, with color consistency from fixture to fixture

Taking orders now! Shipping July 1st

### Why did Lutron develop this product?

To meet the high-end residential and architectural market's preferences for smaller aperture downlights when designing ceilings with clean and discrete lighting layouts

### What does it do?

This all-in-one architectural specification grade fixture:

- Provides high-performance and high quality LED downlighting

## What are the features?

- 3" Non-IC or IC downlight or adjustable options
- Round or square, trim or trimless options
- Standard with 98 CRI Xicato LED modules to render superior light color, consistency, and uniformity
- 2700K, 3000K, 3500K color temperatures
- Standard Lutron driver with 1% Soft-on, Fade-to-Black™ dimming
- Various field changeable beam spreads, including a 15° narrow spot option
- Various painted and anodized metal trim finishes
- 24/7 Lutron all-in-one fixtures service and support
- Full 5-year warranty includes color shift and consistency for LED fixtures

## How will this solution help my business?

- Architects — Meet your vision of clean design with high performance LED recessed lighting that disappear into the ceiling
- Residential system dealers — Meet the needs of your discerning clients with this high performance LED dimming solution
- Eliminates the guesswork of ensuring 100% compatibility between LED fixtures, drivers, and controls
- Ensure customer satisfaction — 24/7 service and support for the entire LED system (LED fixtures, drivers and controls)

**Ideal for:** High end residences, private offices, museums, conference rooms

# What's new in Entire Building Solutions

## Fixtures — Lumaris® LED light bar — diffused lens option



### The opportunity

- High-end residential and architectural markets desire high quality LED fixtures with outstanding performance that will guarantee smooth dimming
- These small profile, non-glare fixtures provide hospitality, retail, and high-end residential customers with a superior lighting experience

Taking orders now! Shipping July 1st

### Why did Lutron develop this product?

To eliminate visible LED hot spots for high reflective surface applications, such as under-cabinet lighting over granite countertops

### What does it do?

- This all-in-one solution (fixtures of various lengths plus driver) eliminates reflective glare in various applications in the same space, such as under-cabinet and cove lighting



## What are the features and benefits?

- Wide angle uninterrupted lines of LED light within a small profile fixture
- 6", 12", 18", 24", 36", or 48" linkable light bars
- Frosted or Clear lens and 30°/60° angled bracket option
- High quality 95 CRI LEDs
- 2700 K or 3500 K LED color temperatures
- Standard remote-mounted, UL Listed Lutron driver and smooth 1% dimming
- Full 5-year warranty includes color shift and consistency for LED fixtures

## How will this solution help my business?

- Provide your customers with consistent light distribution, and dimming in a single product family, in the following applications:
  - Cove — indirect/uplighting for warmth and ambient aesthetics
  - Under cabinet — task lighting for glare-free counter illumination
  - Under shelf — display lighting to highlight decorative features or art
  - Under counter — mood lighting options
  - Path/step — functional safety lighting
  - Closet — multiple mount options for enclosed space illumination
- Eliminate guesswork by ensuring 100% compatibility with 1% Lutron dimming between LED fixtures, drivers, and controls
- Ensure customer satisfaction — 24/7 service and support for the entire LED system (LED fixtures, drivers and controls)

**Ideal for:** High end residences and architectural under-cabinet, cove, shelf and path/step lighting

# What's new in Hospitality Solutions

**myRoom™ solutions — myRoom Prime and myRoom Plus**



Palladiom™ QS keypad



Palladiom QS thermostat

## **Taking Orders Now!**

Hotel Guestroom Mockups — **Available Now!**

Plastic and Glass — **Shipping July 1, 2015**

Metal — **Shipping September 1, 2015**

## **Why did Lutron develop these solutions?**

- To establish Lutron as a global leader for light, temperature, and shade control in hotel guestrooms
- To use Lutron's global expertise in control systems and history in hotel projects to establish the company as the preferred provider for the entire building

## **The opportunity**

- 700,000 rooms worldwide (140,000 rooms in the U.S.) in planning and construction
- Broaden the design scope from public spaces to guestrooms

## What does it do?

- Provides globally available, cost-competitive light, temperature, and shade control with world-class aesthetics, quality, and reliability for hotel guestrooms

## What are the features and benefits?

- Offers world class aesthetic options including the Palladiom keypad and Palladiom thermostat (see pages 14 and 16)
- Offers two system tiers — myRoom prime and myRoom plus
  - myRoom prime is a cost-effective guestroom control system that does not integrate with other hotel management systems
  - myRoom plus is a fully integrated guestroom management system that works with other hotel management systems
- Two tiers allow customers to select features and aesthetics to suit any property and budget need
- Helps hotels save energy not only through temperature control, but also through light and shade control
- Guest presence detection algorithms in both tiers enable automatic energy savings without inconveniencing the guest

## How will this solution help my business?

- myRoom is a globally available, cost-competitive system for guestroom light, temperature, and shade control, from the brand you trust. Choose myRoom for:
  - Aesthetics, quality, and reliability
  - Choice in function/aesthetics/price point
  - Global service and support
  - One partner for your whole hotel
  - A partner with LED control expertise

### Ideal for:

- myRoom prime — 3- and 4-star properties that are looking for energy savings and guest convenience
- myRoom plus — 5-star properties that need a full-fledged guestroom management system

# What's new in Hospitality Solutions

## Alena™ hospitality drapery track solutions



### The opportunity

A demand for cost-effective, automated drapery solutions that are ideal for use in hospitality settings

**Shipping Now!**

### Why did Lutron develop this product?

To offer a cost-effective, pull-to-start drapery solution that can operate standalone or integrate seamlessly into the myRoom systems

### What does it do?

Provides quiet, convenient shade control, as well as a new pull-to-start feature for control at the drape

## What are the features and benefits?

- Control from a keypad/Pico® at the bedside or entranceway, or manual control with our new “pull-to-start” feature, which sends the drape into motion with a gentle tug of the drapery fabric
- Same ultra-quiet drive and smooth performance that are hallmarks of all Lutron drapery track products
- Our plug-and-play, auto limit-detect drapery track system installs easily and requires no programming prior to use
- Three versions for any control technology need:
  - Alena — Standalone drapery solution that uses contact closure control; perfect for guestrooms and MDUs
  - Alena QS Wireless — Hospitality specification product that integrates seamlessly with the myRoom prime solution
  - Alena QS wired — Hospitality specification product that integrates seamlessly with the myRoom plus solution

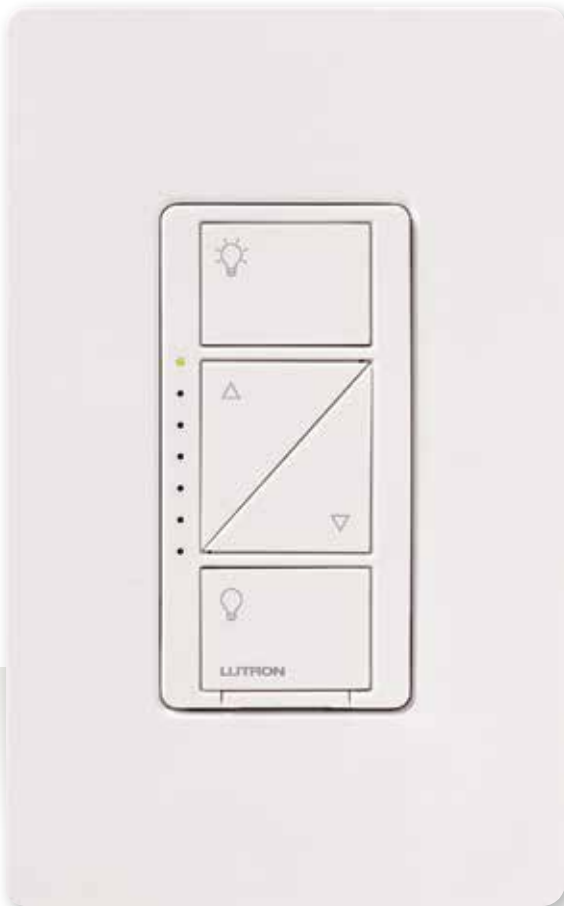
## How will this solution help my business?

- Designers and hotel owners — Differentiate your property by providing your guests with convenience and luxury that delights them. Reduce install time with our easy-to-install solution that doesn't require programming. Just plug and play.

**Ideal for:** Hospitality and MDUs

# What's new in Residential Solutions

## Caséta® Wireless — Dimmer and switches



In-wall dimmer PRO

### The opportunity

- Smart lighting is a rapidly growing market — consumers are increasingly attracted by the convenience, security, and energy-saving benefits of controlling lights with their smart devices
- Lutron's history of innovative lighting controls is reflected in the simple and affordable Caséta Wireless smart lighting system
- Installation is fast, with no new wiring required — making Caséta Wireless ideal for new or existing homes

In-wall dimmer PRO — **Shipping May 15th**

In-wall switch PRO — **Shipping Now**

In-wall neutral switch — **Shipping June, 2015**

### Why did Lutron develop these products?

- Studies show that 67% of homeowners would prefer a professional installer provide their home control solution
- New PRO models support additional load types and higher wattages, and provide additional wiring options to address a broader range of applications

**Note:** All Caséta Wireless products, including the new PRO models, are designed to be fully compatible with each other

## What are the feature and benefits?



### In-wall dimmer PRO

- Works with approved dimmable LEDs and CFLs (up to 250W), and incandescent and halogen bulbs up to 1000W
- Also works with magnetic low-voltage (MLV) lighting (up to 1000 VA)
- Compatible with Lutron phase control LED drivers and interfaces
- Neutral wire optional (required for MLV and drivers/interfaces)
- Use Pico® remotes or existing toggle switches in multi-location applications



### In-wall switch PRO

- Dual voltage — works in 120V and 277V applications
- Minimum load cap included for switching LED, CFL, and ELV loads
- No neutral wire required



### In-wall neutral switch

- Neutral wire required — provides higher capacity and 5W minimum load
- Use Pico remotes or existing toggle switches in multi-location applications

## How will this solution help my business?

The new PRO models provide advanced specifications for greater versatility in a wider range of systems — making them ideal for professional installations

**Note:** PRO models are available only through Lutron dealers and distributors

# What's new in Residential Solutions

## Caséta® Wireless — Pico® remote control PRO



Pico remote control PRO  
3-scene control (with Off)

### The opportunity

- Smart lighting is a rapidly growing market — consumers are increasingly attracted by the convenience, security, and energy-saving benefits of controlling lights with their smart devices
- Lutron's history of innovative lighting controls is reflected in the simple and affordable Caséta Wireless smart lighting system
- Installation is fast, with no new wiring required — making Caséta Wireless ideal for new or existing homes

All models — **Shipping May 15th**

Available only through dealers and distributors

### Why did Lutron develop these products?

- Pico PRO models expand the capabilities of the Caséta Wireless system with a choice of remote control options for a wider range of applications

### What do these products do?

- Control Caséta Wireless dimmers and switches from anywhere inside or near the home
- Easily paired to multiple dimmers or switches to provide one-touch control, without needing an internet connection
- Simply mount to a wall, place on a tabletop, or attach to your car visor with available accessories

**Note:** All Caséta Wireless products, including the new PRO models, are designed to be fully compatible with each other



## What are the feature and benefits?



### Dimming control

- Separate on/off/raise/dim buttons with a 4-button aesthetic
- 10-year battery life



### 2-group switch control

- Switch on/off two groups of lights independently
- 10-year battery life



### 3-scene control (with Off)

- Create three different scenes — select and store favorite levels for each scene
- 10-year battery life

## How will this solution help my business?

- The choice of 4-button Pico remote control PRO models provides professional installers with a differentiated solution for their customers, which is not available in retail stores
- Pico remote control PRO models enhance the versatility and convenience of Caséta Wireless in a wider range of system applications

# What's new in Residential Solutions

## Caséta® Wireless — Lutron app version 2.0



New “Dark” theme matches Apple Watch™ theme for extended battery life



### Why did Lutron develop this product?

- To provide a simple, convenient, and reliable connected home solution for controlling lights, shades, and temperature from anywhere with a smart device
- To appeal to consumers who are excited by new ways of controlling their home’s environment—from their smartphone (with scenes) and automatically (with schedules and geofencing)

### What does it do?

- The Lutron app for Caséta Wireless works with Caséta Wireless smart lighting controls, Lutron motorized shades, Nest and select Honeywell® thermostats, as well as the Apple Watch™ wearable

### What are the features and benefits?

- Easy setup — simply add devices you want to control, including lights, shades, thermostats, and Pico® remotes
- Create scenes with multiple lights and shades set to favorite pre-selected positions
- Conveniently schedule lights to come on at chosen times for increased convenience, security, and peace of mind
- Schedules automatically adjust with changing daylight hours throughout the year
- Geofencing provides increased automation, convenience, and security when leaving home

**Available Now**

## How will this solution help my business?

The updated Lutron app for Caséta Wireless makes the smart home simpler to set up, and provides more convenience/improves security for consumers.



### Today Widget scene selection

- There's no need to launch the Lutron app for Caséta® Wireless or unlock your phone when you want to control your lights, shades, or temperature — simply swipe down from the top of your screen to bring up your controls



### Geofencing is here!

- Automatically turn lights on when you arrive home and turn lights off when you leave
- Receive a notification if you've left the lights on after leaving home, then turn them off right from the Notifications screen



Apple Watch™ wearable

### Apple Watch™ support

- Control your lights, shades, and temperature no matter where you are, from your wrist
- Receive notifications when you leave your house if you've left the lights on. Turn them off with one tap.

Apple Watch is a trademark of Apple Inc.

# What's new in Residential Solutions

## Caséta® Wireless — Integration partners

### Now with Caséta Wireless Smart Bridge and Smart Bridge PRO



#### Works With Nest

The Lutron app for Caséta Wireless now works with the Nest Learning Thermostat™. From this app you can adjust the temperature and set your Nest thermostat to Home or Away from anywhere. This functionality is available now for iOS and Android-based devices.\*



#### Complete the Harmony experience with Caséta® Wireless

It's easy to control Caséta Wireless lights and Serena® shades with your Logitech Harmony Living Home remote and the Harmony app. Create the perfect movie "activity" that dims the lights, closes the shades, and starts the show with a single touch.\*



#### Integration with IFTTT

Caséta Wireless now has a channel on IFTTT (IF This Then That) website. Create "recipes" to adjust Caséta Wireless dimmers and Lutron wireless shades based on chosen triggers. For example, "If it's sunny, close my shades," or "if I'm coming home, turn on my lights."\*

\* Find the full list of integration options at [www.casetawireless.com/integration](http://www.casetawireless.com/integration)

# What's new in EcoSystem®

## Updates — Wired and wireless control networks for new construction or existing buildings

Lutron's EcoSystem network, a digital solution that guarantees compatibility between LED drivers, ballasts, controls, and sensors, now offers:



EcoSystem H-Series  
LED driver

- More high performance, incandescent-like LED dimming with H-series LED drivers featuring Soft-on, Fade-to-Black™



PowPak® wireless  
individual fixture control

- Additional wired and wireless control methods for new construction or existing buildings



Quantum Vue  
dashboard

- Improved visualization and control of your system using new Quantum Vue™

Enhanced EcoSystem-enabled devices from lighting industry alliances, with more choices and features such as white tuning, integrated LED modules, and troffers



lumenetix®

lumenpulse™

XICATO

[www.lutron.com/WhatsNew](http://www.lutron.com/WhatsNew)



World Headquarters 1.610.282.3800  
Technical Support 1.800.523.9466 (Available 24/7)  
Customer Service 1.888.LUTRON1 (1.888.588.7661)

© 04/2015 Lutron Electronics Co., Inc. | P/N 367-2562 REV B

