

Quantum® DALI Emergency Ballast Management Software

The Quantum® DALI Emergency ballast management software adds the ability to monitor, manage, and test DALI emergency devices that are connected to the Quantum® Lighting Control System. This software is an optional module within the Quantum® Q-Admin™ application that is recommended when using DALI Emergency ballasts with a Quantum® lighting control system.

Test in Progress

The screenshot shows the Q-Admin software interface. At the top, there's a navigation bar with 'Q-Admin', 'Reports', and 'Administration' tabs. Below that, a status bar indicates 'The system has detected one or more problems.' A calendar widget shows the current date as June 19, 2010. The main area contains a table of device statuses:

Device	Group#	Problem	Date Tested - Function	Date Tested - Duration
sys				
Root Area\Processor Panel 001				
Link B (QS Link)				
Root Area\ESN 001 (Serial # 091200A0)				
Loop 1 (DALI)				
Root Area\E1, Address: 1	1	Test in progress	Test in progress	Test in progress
Root Area\E2, Address: 2	2	Battery Failure	5/19/2010	
Root Area\E3, Address: 3	3	Function Test Past Due		
Root Area\E4, Address: 4	4	Emergency Lamp Failure	5/19/2010	

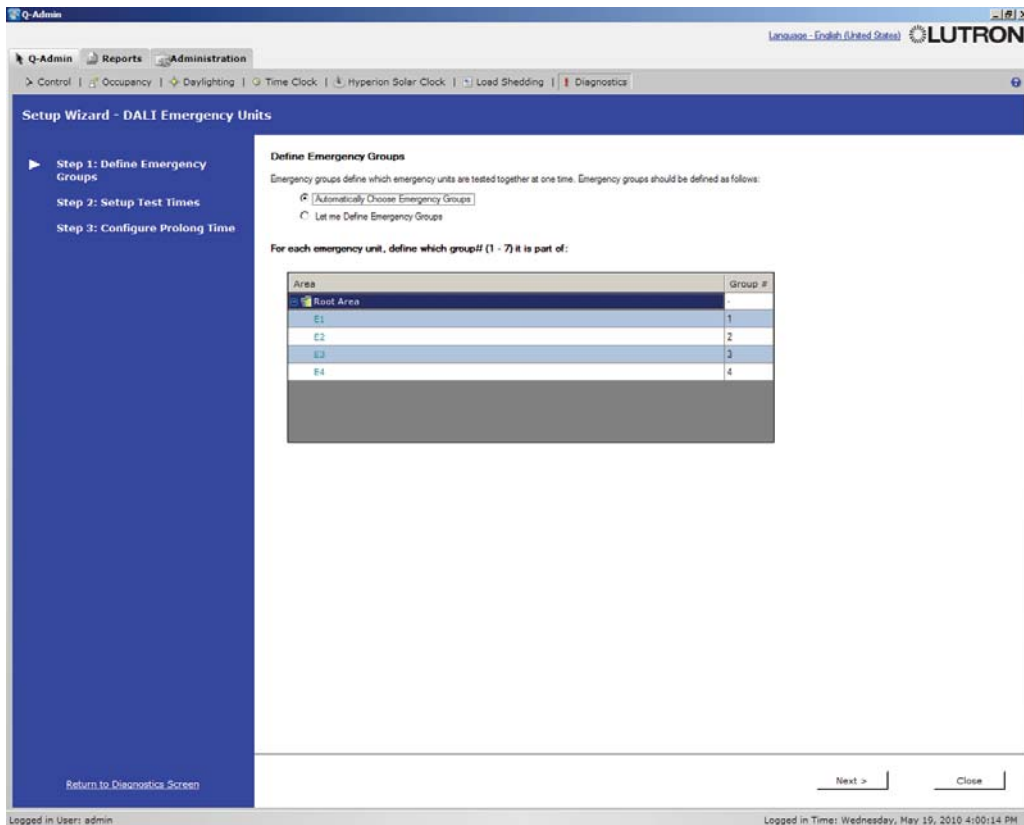
On the right side, there's a 'Diagnostics' sidebar with options: 'View Diagnostics', 'Replace a Ballast', and 'View DALI Emergency Status'. Below that are 'Setup' and 'Manual Testing' sections with buttons for 'Manual Test' and 'Stop All Tests'.

Job Name:	Model Numbers:
Job Number:	

Features

- The software allows the user to schedule and perform Functional Tests and Duration Tests for all DALI Emergency ballasts that are part of the system.
 - Functional Test - verifies that the DALI emergency devices are communicating with the system properly, checks for lamp failures and verifies that the battery circuit is functional
 - Duration Test - verifies that the batteries attached to the DALI emergency devices operate within their rated limits
- The user can group the DALI emergency ballasts into 1 of 7 Emergency Groups.
- The user can define the day of the week that each Emergency Group will be tested.
- The user can schedule Functional Tests to occur Weekly, Bi-Weekly or Monthly. In addition, Functional Tests can be manually initiated at any time.
- The user can schedule Duration Tests to occur Monthly, Quarterly, Bi-Annually or Annually. In addition, Duration Tests can be manually initiated at any time.
- The user can configure the Prolong Time for all DALI Emergency Devices in the system. The Prolong Time is the amount of time that the DALI Emergency devices will stay at their emergency light level after an emergency event has ended and normal power has been restored.

Setup Wizard-Define Emergency Groups



Job Name:	Model Numbers:
Job Number:	

Setup Wizard-Setup Test Times

Setup Wizard - DALI Emergency Units

Step 1: Define Emergency Groups
Step 2: Setup Test Times
Step 3: Configure Prolong Time

Setup Test Times
Define which day of the week each emergency group is to be tested:

Group 1	Sunday	1 : 00 AM	Group 5	Thursday	1 : 00 AM
Group 2	Monday	1 : 00 AM	Group 6	Friday	1 : 00 AM
Group 3	Tuesday	1 : 00 AM	Group 7	Saturday	1 : 00 AM
Group 4	Wednesday	1 : 00 AM			

Function Tests
Define when emergency units are to be function tested. Function tests verify that emergency units are responding properly, checks for lamp failures, and verifies that the emergency circuit is working. It does not verify the battery operates within its rated limits.

Perform Function Test:

Manual Only Every Other Week
 Weekly Monthly

Duration Tests
Define when emergency units are to be duration tested. Duration tests verify that emergency batteries operate within their rated limits. During

Perform Duration Test:

Manual Only Quarterly Annually
 Monthly Every 6 months

Return to Diagnostics Screen Next > Close

Logged in User: admin Logged in Time: Wednesday, May 19, 2010 4:00:14 PM

Setup Wizard-Configure Prolong Time

Setup Wizard - DALI Emergency Units

Step 1: Define Emergency Groups
Step 2: Setup Test Times
Step 3: Configure Prolong Time

Configure Prolong Time
Prolong time is the time emergency units should continue to remain at their emergency level after normal

Prolong Time:

None
 2 minutes (default)
 5 minutes
 15 minutes
 Half-hour
 Hour
 2 hours

Return to Diagnostics Screen Close

Logged in User: admin Logged in Time: Wednesday, May 19, 2010 4:00:14 PM

Job Name:

Model Numbers:

Job Number:

Reported Information

The software will report the following information regarding the DALI Emergency Ballasts:

- Date of last Function Test for each Emergency Group
- Date of last Duration Test for each Emergency Group
- If Duration Test or Function Test is past due for each Emergency Group
- If a Duration Test or Function Test is in progress
- If any problem was identified during a Duration Test or Function Test

Requirements

- DALI Emergency Ballasts must be connected to the Quantum® system through a Lutron® DALI Energi Savr Node™, model number QSNE-2DAL-D

Notes

- DALI Emergency Fixtures will turn on and off during Functional and Duration Tests. These Fixtures will not be controllable during the test.

Licenses Required

- One license needs to be purchased for each processor in the Quantum® system.

Standard Compliance

- IEC/EN 62034

Job Name:	Model Numbers:
Job Number:	