

## ControlIT™ Software

A software license for *ControlIT* software enables a user to control and receive real-time feedback from a Lutron centralized lighting control system (CLCS). It is run on an *eLumen Manager* (Lutron-supplied PC or server) using a system database created with *DesignIT*.

### License Purchase Options

- As a component part of Lutron’s *eLumen* suite of software
- Separately for customer-supplied *eLumen Manager* (contact Lutron for compatibility requirements)

### Available Companion Software

The *eLumen Suite* provides all of the components below. Each one relates to the customer’s centralized lighting control system database (CLCS database). For detailed information on any component, refer to its specific Specification Submittal, as well as the *eLumen Manager* Specification Submittal.

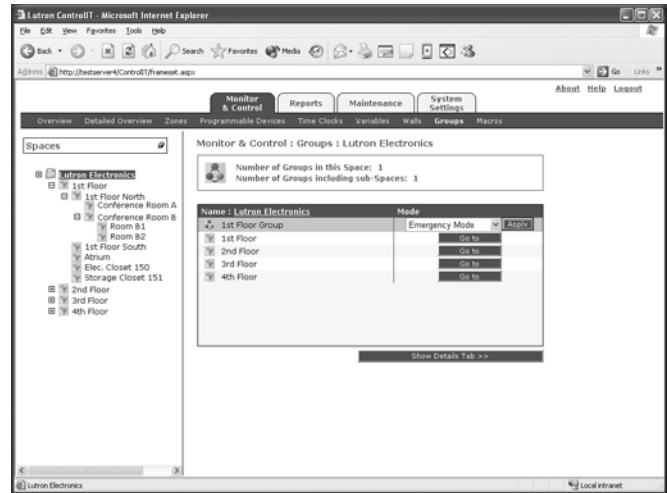
- ***DesignIT***: Creates the database that defines, modifies, and updates a Lutron CLCS
- ***SecureIT***: Allows a system administrator to create usernames and passwords to limit access to the CLCS database (as created in *DesignIT*)
- ***ControlIT***: Provides real-time operation of the CLCS database (as created in *DesignIT*)
- ***PictureIT***: Provides a visual graphic that allows control of preselected CLCS database items (as created in *DesignIT*)
- ***ScheduleIT***: Allows the user to temporarily adjust the scheduling of existing timeclock events within the CLCS
- ***ConfigureIT***: Allows the user to make temporary or permanent scene changes, in real time, to the CLCS database (as created in *DesignIT*)

### Required Hardware

- Lutron *eLumen Manager* (PC or server; see *eLumen Manager* Specification Submittal)
- Customer-supplied *eLumen Manager* (contact Lutron for compatibility requirements)
- Lutron *GRAFIK 5000/6000/7000* processor(s)

### Software Features and Capabilities

- Web-based software
- Control and monitor zone intensity
- Manipulate and monitor controllable objects
- Apply modes to groups
- Run diagnostics of system hardware



- **Reports**
  - User activity report: view actions taken by authorized users of one of the system computers
  - Scene selection report: current scene details
  - Scene zone intensity report: current zone intensity, fade time, and delay time for all of the zones in the selected space
  - Light level report: intensity of the selected zones over a period of time
  - LZC specific reports: See Lighting Zone Controllers Reporting Specification Submittal
- Compile and transfer the database from the *eLumen Manager* to the centralized lighting control system
- Connect via Local Area Network (LAN) to a project residing on an *eLumen Manager* for remote use

Job Name:	Model Numbers:
Job Number:	