

## ScheduleIT™ Software

A software license for *ScheduleIT* software enables a user to control and receive real-time feedback while making temporary changes to timeclock events in the database for a Lutron centralized lighting control system (CLCS). It is run on an *eLumen Manager* (Lutron-supplied PC or server).

### License Purchase Options

- As a component part of Lutron’s *eLumen* suite of software
- Separately for customer-supplied *eLumen Manager* (contact Lutron for compatibility requirements)

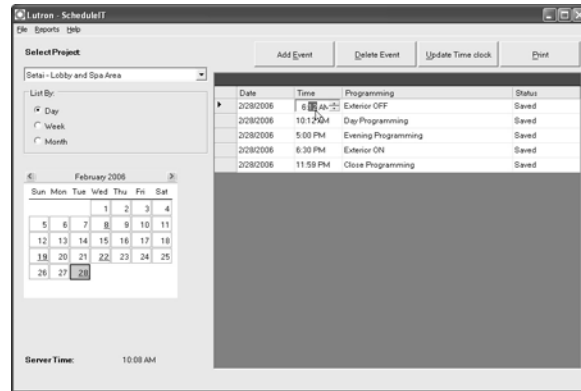
### Available Companion Software

The *eLumen* Suite provides all of the components below. Each one relates to the customer’s centralized lighting control system database (CLCS database). For detailed information on any component, refer to its specific Specification Submittal, as well as the *eLumen Manager* Specification Submittal.

- ***DesignIT***: Creates the database that defines, modifies, and updates a Lutron CLCS
- ***SecureIT***: Allows a system administrator to create usernames and passwords to limit access to the CLCS database (as created in *DesignIT*)
- ***ControllIT***: Provides real-time operation of the CLCS database (as created in *DesignIT*)
- ***PictureIT***: Provides a visual graphic that allows control of preselected CLCS database items (as created in *DesignIT*)
- ***ScheduleIT***: Allows the user to temporarily adjust the scheduling of existing timeclock events within the CLCS
- ***ConfigureIT***: Allows the user to make temporary or permanent scene changes, in real time, to the CLCS database (as created in *DesignIT*)

### Required Hardware

- Lutron *eLumen Manager* (PC or server; see *eLumen Manager* Specification Submittal)
- Customer-supplied *eLumen Manager* (contact Lutron for compatibility requirements)
- Lutron *GRAFIK* 5000/6000/7000 processor(s)



### Software Features and Capabilities

- Windows-based software
- The special timeclock events run, then the schedule reverts to its normal programming
- *eLumen Manager* must be running and connected to the processor 5 minutes before the event runs
- Connect via Local Area Network (LAN) to a project residing on an *eLumen Manager* for remote use

Job Name:	Model Numbers:
Job Number:	