

SecureIT™ Software

A software license for *SecureIT* software enables a system administrator to assign specific usernames and passwords to users of a Lutron centralized lighting control system (CLCS). It is run on an *eLumen Manager* (Lutron-supplied PC or server).

License Purchase Options

- Bundled with *DesignIT* and *ConfigureIT* when purchased with a Lutron *eLumen Manager* (PC or server)
- Bundled with *GRAFIK 5000* or *6000* system packages
- Separately for customer-supplied *eLumen Manager* (contact Lutron for compatibility requirements)

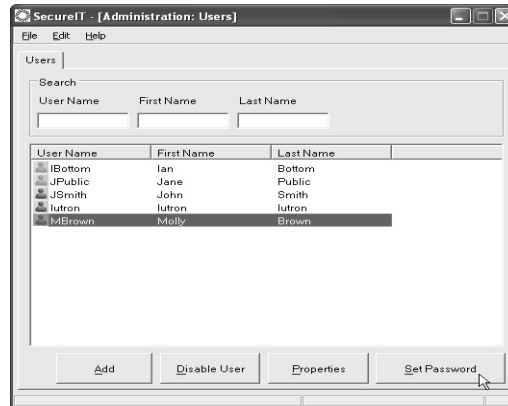
Available Companion Software

The *eLumen Suite* provides all of the components below. Each one relates to the customer’s centralized lighting control system database (CLCS database). For detailed information on any component, refer to its specific Specification Submittal, as well as the *eLumen Manager* Specification Submittal.

- ***DesignIT***: Creates the database that defines, modifies, and updates a Lutron CLCS
- ***SecureIT***: Allows a system administrator to create usernames and passwords to limit access to the CLCS database (as created in *DesignIT*)
- ***ControllIT***: Provides real-time operation of the CLCS database (as created in *DesignIT*)
- ***PictureIT***: Provides a visual graphic that allows control of preselected CLCS database items (as created in *DesignIT*)
- ***ScheduleIT***: Allows the user to temporarily adjust the scheduling of existing timeclock events within the CLCS
- ***ConfigureIT***: Allows the user to make temporary or permanent scene changes, in real time, to the CLCS database (as created in *DesignIT*)

Required Hardware

- Lutron *eLumen Manager* (PC or server; see *eLumen Manager* Specification Submittal)
- Customer-supplied *eLumen Manager* (contact Lutron for compatibility requirements)
- Lutron *GRAFIK 5000/6000/7000* processor(s)



Software Features and Capabilities

- Allows the building’s system administrator to assign users specific usernames and passwords. Access rights of a user can be limited to:
 - Specific applications (*DesignIT*, *SecureIT*, etc.)
 - Specific spaces within the tree
 - Specific tabs in *ControllIT*
 - Monitor only in *ControllIT*
- The software also allows the administrator to select the preferred language language of the users from the following list:
 - English (U.S.)
 - German
 - Spanish
 - French
 - Chinese (simplified)
 - Japanese
- Additional users must have client licenses, available in blocks of 5 (EL-SFT-CLIC-5; see the *GRAFIK* Centralized Lighting Control Remote Control Hardware License Specification Submittal)
- Connect via Local Area Network (LAN) to a project residing on an *eLumen Manager* for remote use

Job Name:	Model Numbers:
Job Number:	