

EM-A-LON-FT-120

Integrates a Lutron Centralized Lighting Control System with digital equipment that supports LonWorks® communication

- Allows a LonWorks® system to read status from a Centralized Lighting Control System processor.
- Allows a LonWorks® system to read status from a Centralized Lighting Control System Processor in one of two modes:
 - Individual zone* control of up to 512 zones.
 - Scene selection for up to 500 spaces.
- Supports LonWorks® variables.
- System status refresh rate is determined by the number of status variables being monitored.

* Lighting Zone Controllers, OMX-3600, SO-SVC, and CCOs cannot be controlled by zone control.



Job Name:	Model Numbers:
Job Number:	

Specifications

Regulatory Approvals

- UL listed
- cUL listed

Power

Operating voltage:

120 V~ 50/60 Hz
 Maximum current: 200 mA

Terminals: Use copper wire only. Wire range 14 to 10 AWG (1.5 to 4.0 mm²). Supply conductors minimum 167 °F (75 °C) Connections.

- One (1) Lutron® RS-485 connector to Processor Auxiliary Link.
- One (1) Fieldbus male jack for FT/10 communication with the LonWorks® devices.

Zone Functions:

- Set zone intensity
- Read zone intensity

Space Functions:

- Set scene in space
- Read last scene set in space

System Communications and Capacity

- One EM-A-LON-FT-120 Control Interface per Centralized Lighting Control System processor panel.

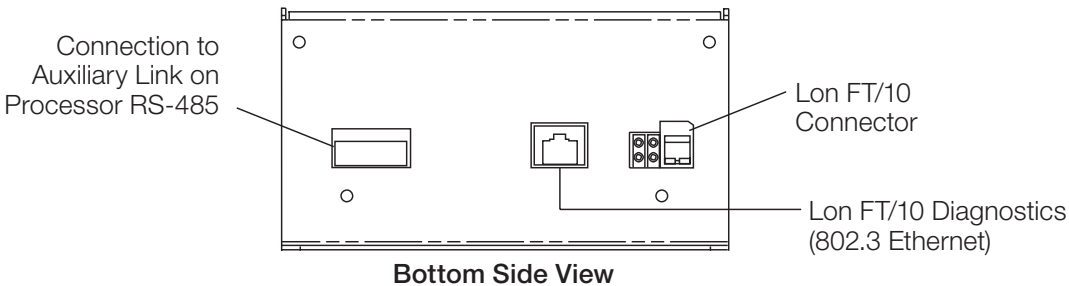
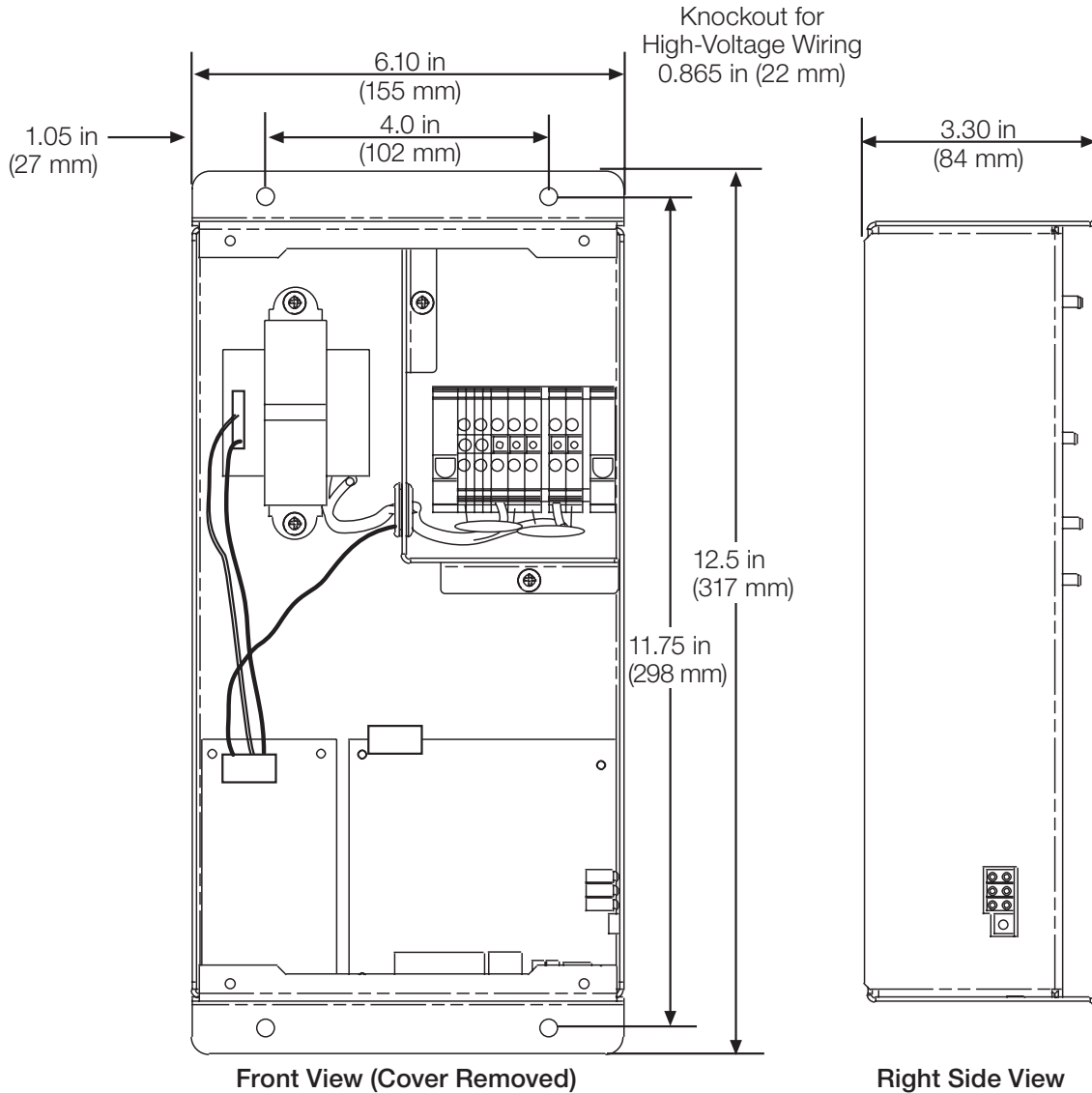
Environment

- 32 °F to 104 °F (0 °C to 40 °C) operating temperature
- Maximum 90% relative humidity (non-condensing)

<p>Job Name:</p> <p>Job Number:</p>	<p>Model Numbers:</p>
--	------------------------------

Dimensions and Weight

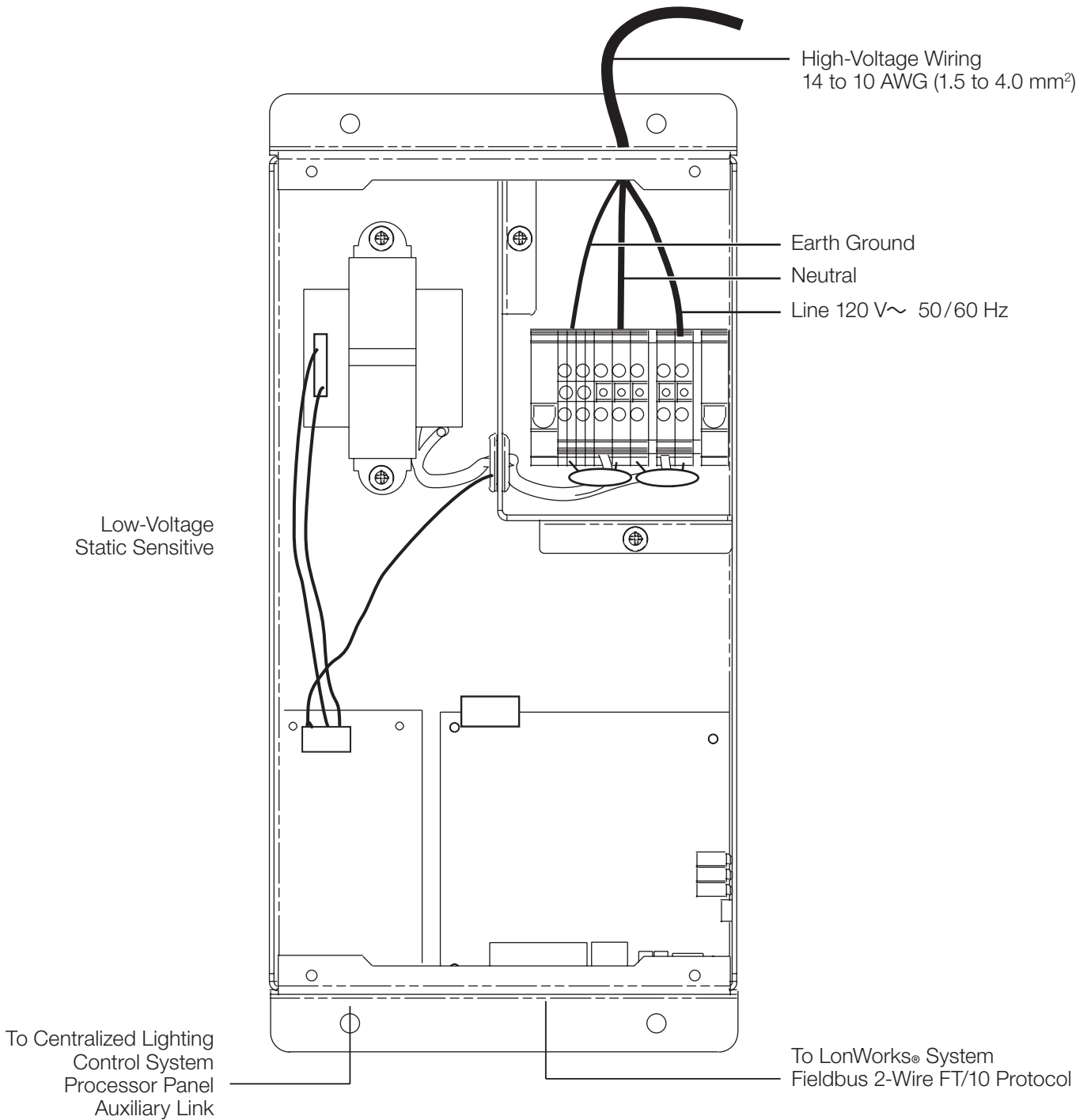
- All dimensions are shown as inches (millimeters).
- Leave at least 6 in (152 mm) clearance on the bottom and right hand side of the enclosure to access the plug-in ports, the programming button and the status/operation LEDs.
- 6.5 lbs (2.95 kg)



Job Name:	Model Numbers:
Job Number:	

Wiring

Power should be wired to the terminal blocks in the unit through the knockout at the top of the can. Use copper wire only. Wire range 14 to 10 AWG (1.5 to 4.0 mm²). Supply conductors rated minimum 167 °F (75 °C). Torque terminals to 5 in-lbs (0.7 N•m). **Do not touch exposed circuitry on low-voltage side.**

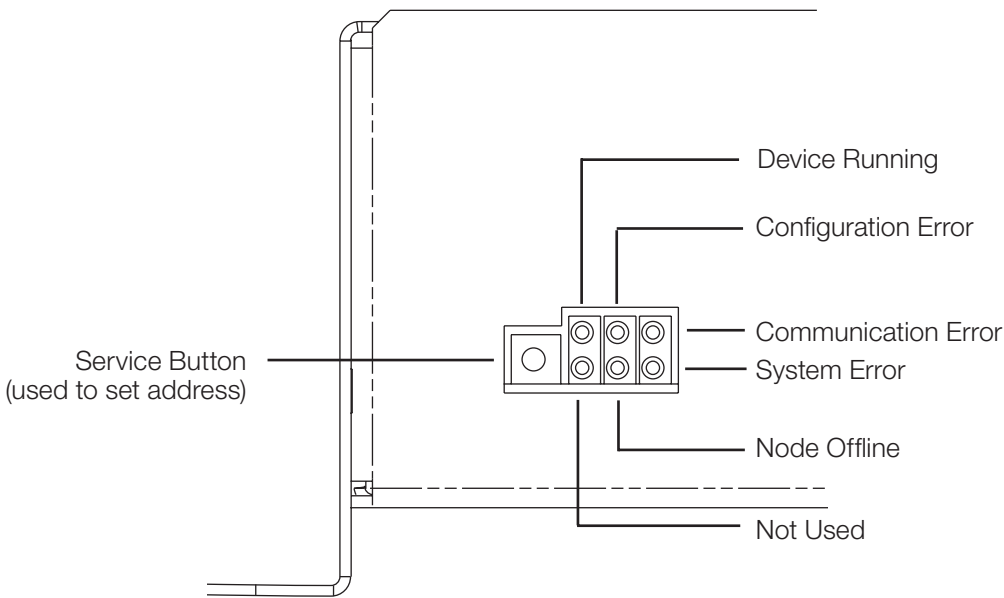
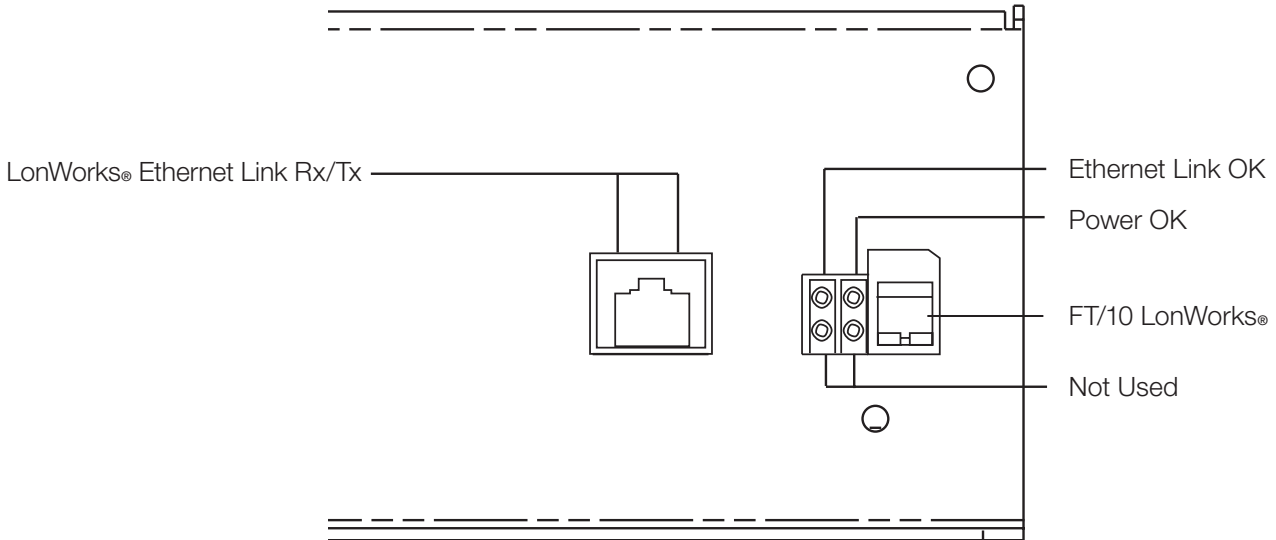


Job Name:	Model Numbers:
Job Number:	

Operation and Status

Power & Communication Status

The device provides power and communication status information using the LEDs visible on the BOTTOM SIDE of the enclosure.



Job Name:	Model Numbers:
Job Number:	

LonWorks® Variables

InPuts

Set_Int_X
Set_Scn_X

Outputs (Status)

Get_Int_X
Get_Scn_X

Note: Read, Write, Read Multiple and Write Multiple are supported. CoV is not supported.

Job Name: Job Number:	Model Numbers:
------------------------------	----------------