

# EcoSystem™ Wallstations

**CC-1BRL 1-Button Wallstation**  
**CC-4BRL 4-Button Wallstation**

Low-Voltage PELV (Class 2: USA)  
20 V $\overline{\text{---}}$  20 mA

*Please Read*

## Overview

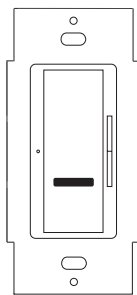
*EcoSystem* wallstations let you control a group of lights equipped with *EcoSystem* ballasts or ballast modules. The wallstation wires directly to the terminals of an *EcoSystem* ballast or ballast module for power and communication.

## 1-Button Functionality

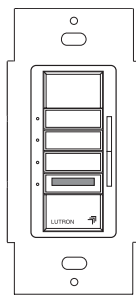
The Tapswitch turns lights on and off. The Dimming Rocker fine-tunes the lighting level starting from any point.

## 4-Button Functionality

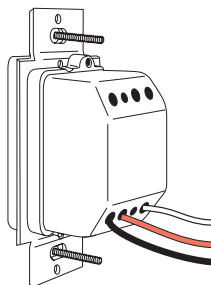
The wallstation can program and select four unique lighting scenes or levels, with the additional options of "All On" and "All Off" for a group of lights. The Dimming Rocker fine-tunes the lighting level for the entire group.



Front View  
1-Button Wallstation



Front View  
4-Button Wallstation



Rear View  
1- and 4-Button Wallstations



**Caution!** Wallstation circuits are PELV (Class 2: USA) circuits. Unless otherwise specified, voltages do not exceed 35 V $\overline{\text{---}}$ . These circuits comply with the requirements of NFPA 70, National Electric Code® (NEC®). When installing the wallstation, follow all applicable national and/or local wiring regulations.

**Note:** A wallstation cannot be wired to more than one ballast or ballast module. Control of multiple ballasts or ballast modules may be achieved through programming.

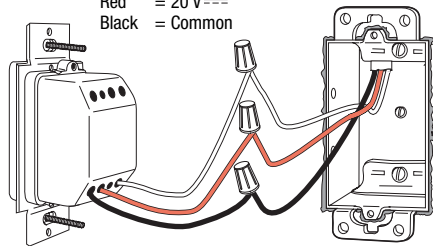
## Wiring the Wallstation

- Make sure that the supply breaker to the lighting circuit (ballasts or ballast modules) is OFF, then connect the three wires.
- Connect IR wire from the ballast or ballast module to the white wire on the wallstation.
- Connect +20 V $\overline{\text{---}}$  wire from the ballast or ballast module to the red wire on the wallstation.
- Connect Common wire from the ballast or ballast module to the black wire on the wallstation.

**Note:** When wiring between the wallstation and the ballast or ballast module, Lutron recommends three-conductor #22 AWG (0.5 mm<sup>2</sup>) solid cable.

## Ballast Terminals

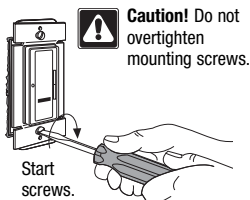
White = IR Input  
Red = 20 V $\overline{\text{---}}$   
Black = Common



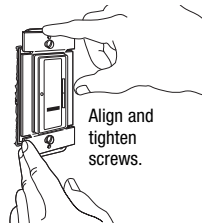
**Note:** Wire length from wallstation to ballast or ballast module must not exceed 50 ft. (15.2 m)

## Mounting the Wallstation to the Wallbox

- 1) Form wires carefully into the wallbox.
- 2) Install wallstation and start screws.
- 3) Align wallstation with the wallbox.
- 4) Tighten screws until wallstation is firmly in place.
- 5) Install wallplate.



**Caution!** Do not overtighten mounting screws.



1-button shown; 4-button installs in the same manner.

## Operating the 4-Button Wallstation

Ensure power to the lighting circuit is ON.

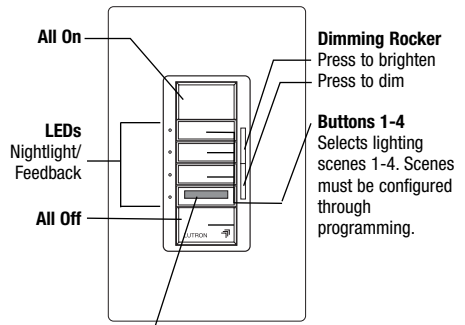


**Caution!** The lighting circuit should be energized only when all wiring is complete and all persons are clear of fixtures/devices. Turn power ON only after checking that it is safe to do so.

The 4-button wallstation will initially control only the ballast or ballast module to which it is connected. LEDs should glow steady green. To control additional ballasts or ballast modules, the wallstation must be programmed. You must have an *EcoSystem* Bus Supply installed and operating before you can program the wallstation.

**Note:** All button presses will cause the LEDs to blink. This blink verifies that the signal was sent to the ballast or ballast module.

### Normal Operation



### IR Window

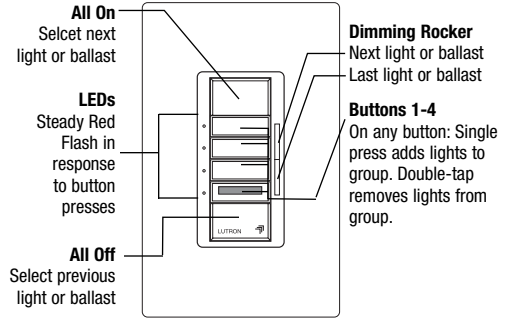
Allows system programming via infrared commands from an *EcoSystem* Handheld Programmer. Not for use with personal remote controls.

### Programming Mode: Grouping (4-button only)

- 1) Press and hold All On and Dimming Rocker up for 5 seconds to enter. LEDs will turn red. All fixtures on the *EcoSystem* link will dim and then fixtures assigned to the wallstation will go to full on.
- 2) Press All On or All Off to select the next fixture on the *EcoSystem* Bus. Selected fixture will flash.
- 3) Press any button (1-4) once to add the selected fixture to the group. Fixture will go to full on. Press any button twice quickly (double-tap) to remove the fixture from the group. Fixture will dim to low end.
- 4) Press and hold All Off and Dimming Rocker down for 5 seconds to exit. LEDs will turn green. All fixtures on the *EcoSystem* Bus will go to full on.

**Note:** Wallstation will exit programming mode after approximately two minutes of inactivity.

### Group Programming

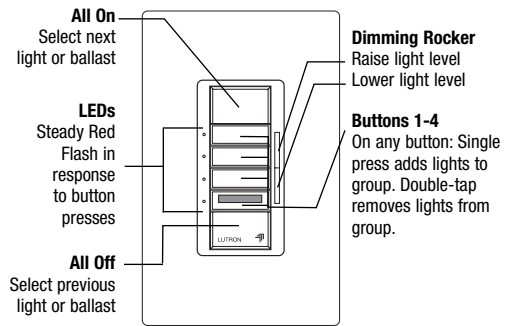


### Programming Mode: Setting Scene Levels (4-button only)

- 1) Press and hold Button 1 and Dimming Rocker up for 5 seconds to program Scene 1. The LED next to Button 1 will turn red, and all other LEDs will remain green. The fixtures grouped to the wallstation will go to their Scene 1 setting, and all other lights on the link will go to full on.
- 2) Press All On or All Off to select the fixture in the group. The lights within the selected fixture will flash.
- 3) Press Dimming Rocker up or down to adjust lights to desired level.
- 4) Repeat the previous two steps until all lights are at desired level.
- 5) Press and hold All Off and Dimming Rocker down for 5 seconds to exit and save Scene 1 programming. The LED next to Button 1 will return to green, and all lights on the *EcoSystem* Bus will go to full on.
- 6) Repeat all steps for Scenes 2, 3, and 4.

**Note:** Wallstation will exit programming mode after approximately two minutes of inactivity.

### Scene Programming



## Operating the 1-Button Wallstation

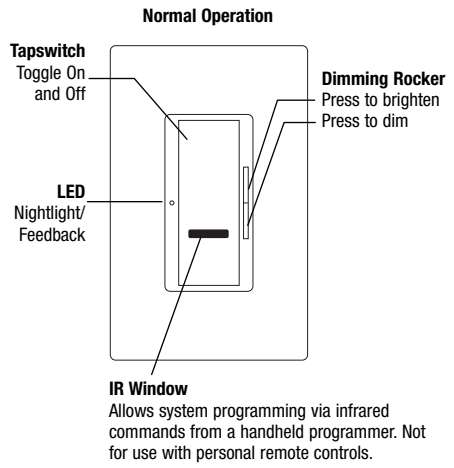
Ensure power to the lighting circuit is ON.



**Caution:** The lighting circuit should be energized only when all wiring is complete and all persons are clear of fixtures/devices. Turn power ON only after checking that it is safe to do so.

The 1-button wallstation will initially control only the ballast or ballast module to which it is connected. LED should glow steady green. To control additional ballasts or ballast modules, the wallstation must be programmed. You must have an *EcoSystem* Bus Supply installed and operating before you can program the wallstation.

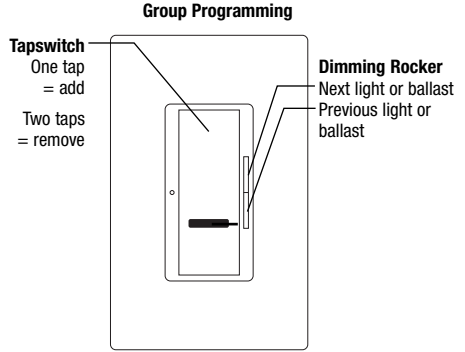
**Note:** All button presses will cause the LED to blink. This blink verifies that the signal was sent to the ballast or ballast module.



## Programming Mode: Grouping (1-button only)

- 1) Press and hold on Tapswitch and Dimming Rocker up for 5 seconds to enter. LED will turn red. All fixtures on the *EcoSystem* Bus link will dim and then fixtures assigned to the wallstation will go to full on.
- 2) Press Dimming Rocker up or down to select the next ballast or ballast module on the *EcoSystem* Bus. Fixtures selected will flash.
- 3) Press Tapswitch once to add the selected fixtures to the group. Fixture will go to full on. Press the Tapswitch twice quickly (double-tap) to remove the fixtures from the group. Fixture will dim to low end.
- 4) Press and hold off Tapswitch and Dimming Rocker down for 5 seconds to exit. LEDs will turn green. All lights on the *EcoSystem* Bus will go to full on.

**Note:** Wallstation will exit programming mode after approximately two minutes of inactivity.



## Troubleshooting

If the LED or LEDs do not turn on:

- Verify the wallstation is receiving 20 V<sub>AC</sub> between the black and red wires.

If the lights do not respond to button presses:

- Verify that the ballasts and/or ballast modules are connected to an *EcoSystem* Bus supply.
- Verify that the *EcoSystem* Bus supply is receiving power. (Note: Bus supply is typically fed from a different circuit than the lights to which it is connected.)
- Verify the wallstation white wire is connected to the IR terminal on the ballast or ballast module.

If a problem persists, contact the Lutron Technical Support Center.

## Lutron Electronics Co., Inc. One Year Limited Warranty

For a period of one year from the date of purchase, and subject to the exclusions and restrictions described below, Lutron warrants each new unit to be free from manufacturing defects. Lutron will, at its option, either repair the defective unit or issue a credit equal to the purchase price of the defective unit to the Customer against the purchase price of comparable replacement part purchased from Lutron. Replacements for the unit provided by Lutron or, at its sole discretion, an approved vendor may be new, used, repaired, reconditioned, and/or made by a different manufacturer.

If the unit is commissioned by Lutron or a Lutron approved third party as part of a Lutron commissioned lighting control system, the term of this warranty will be extended, and any credits against the cost of replacement parts will be prorated, in accordance with the warranty issued with the commissioned system, except that the term of the unit's warranty term will be measured from the date of its commissioning.

### EXCLUSIONS AND RESTRICTIONS

This Warranty does not cover, and Lutron and its suppliers are not responsible for:

1. Damage, malfunction or inoperability diagnosed by Lutron or a Lutron approved third party as caused by normal wear and tear, abuse, misuse, incorrect installation, neglect, accident, interference or environmental factors, such as (a) use of incorrect line voltages, fuses or circuit breakers; (b) failure to install, maintain and operate the unit pursuant to the operating instructions provided by Lutron and the applicable provisions of the National Electrical Code and of the Safety Standards of Underwriter's Laboratories; (c) use of incompatible devices or accessories; (d) improper or insufficient ventilation; (e) unauthorized repairs or adjustments; (f) vandalism; or (g) an act of God, such as fire, lightning, flooding, tornado, earthquake, hurricane or other problems beyond Lutron's control.
2. On-site labor costs to diagnose issues with, and to remove, repair, replace, adjust, reinstall and/or reprogram the unit or any of its components.
3. Equipment and parts external to the unit, including those sold or supplied by Lutron (which may be covered by a separate warranty).
4. The cost of repairing or replacing other property that is damaged when the unit does not work properly, even if the damage was caused by the unit.

EXCEPT AS EXPRESSLY PROVIDED IN THIS WARRANTY, THERE ARE NO EXPRESS OR IMPLIED WARRANTIES OF ANY TYPE, INCLUDING ANY IMPLIED WARRANTIES OF FITNESS FOR A PARTICULAR PURPOSE OR MERCHANTABILITY. LUTRON DOES NOT WARRANT THAT THE UNIT WILL OPERATE WITHOUT INTERRUPTION OR BE ERROR FREE.

NO LUTRON AGENT, EMPLOYEE OR REPRESENTATIVE HAS ANY AUTHORITY TO BIND LUTRON TO ANY AFFIRMATION, REPRESENTATION OR WARRANTY CONCERNING THE UNIT. UNLESS AN AFFIRMATION, REPRESENTATION OR WARRANTY MADE BY AN AGENT, EMPLOYEE OR REPRESENTATIVE IS SPECIFICALLY INCLUDED HEREIN, OR IN STANDARD PRINTED MATERIALS PROVIDED BY LUTRON, IT DOES NOT FORM A PART OF THE BASIS OF ANY BARGAIN BETWEEN LUTRON AND CUSTOMER AND WILL NOT IN ANY WAY BE ENFORCEABLE BY CUSTOMER.

IN NO EVENT WILL LUTRON OR ANY OTHER PARTY BE LIABLE FOR EXEMPLARY, CONSEQUENTIAL, INCIDENTAL OR SPECIAL DAMAGES (INCLUDING, BUT NOT LIMITED TO, DAMAGES FOR LOSS OF PROFITS, CONFIDENTIAL OR OTHER INFORMATION, OR PRIVACY; BUSINESS INTERRUPTION; PERSONAL INJURY; FAILURE TO MEET ANY DUTY, INCLUDING OF GOOD FAITH OR OF REASONABLE CARE; NEGLIGENCE, OR ANY OTHER PECUNIARY OR OTHER LOSS WHATSOEVER), NOR FOR ANY REPAIR WORK UNDERTAKEN WITHOUT LUTRON'S WRITTEN CONSENT ARISING OUT OF OR IN ANY WAY RELATED TO THE INSTALLATION, DEINSTALLATION, USE OF OR INABILITY TO USE THE UNIT OR OTHERWISE UNDER OR IN CONNECTION WITH ANY PROVISION OF THIS WARRANTY, OR ANY AGREEMENT INCORPORATING THIS WARRANTY, EVEN IN THE EVENT OF THE FAULT, TORT (INCLUDING NEGLIGENCE), STRICT LIABILITY, BREACH OF CONTRACT OR BREACH OF WARRANTY OF LUTRON OR ANY SUPPLIER, AND EVEN IF LUTRON OR ANY OTHER PARTY WAS ADVISED OF THE POSSIBILITY OF SUCH DAMAGES.

NOTWITHSTANDING ANY DAMAGES THAT CUSTOMER MAY INCUR FOR ANY REASON WHATSOEVER (INCLUDING, WITHOUT LIMITATION, ALL DIRECT DAMAGES AND ALL DAMAGES LISTED ABOVE), THE ENTIRE LIABILITY OF LUTRON AND OF ALL OTHER PARTIES UNDER THIS WARRANTY ON ANY CLAIM FOR DAMAGES ARISING OUT OF OR IN CONNECTION WITH THE MANUFACTURE, SALE, INSTALLATION, DELIVERY, USE, REPAIR, OR REPLACEMENT OF THE UNIT, OR ANY AGREEMENT INCORPORATING THIS WARRANTY, AND CUSTOMER'S SOLE REMEDY FOR THE FOREGOING, WILL BE LIMITED TO THE AMOUNT PAID TO LUTRON BY CUSTOMER FOR THE UNIT. THE FOREGOING LIMITATIONS, EXCLUSIONS AND DISCLAIMERS WILL APPLY TO THE MAXIMUM EXTENT ALLOWED BY APPLICABLE LAW, EVEN IF ANY REMEDY FAILS ITS ESSENTIAL PURPOSE.

### TO MAKE A WARRANTY CLAIM

To make a warranty claim, promptly notify Lutron within the warranty period described above by calling the Lutron Technical Support Center at (800) 523-9466. Lutron, in its sole discretion, will determine what action, if any, is required under this warranty. To better enable Lutron to address a warranty claim, have the unit's serial and model numbers available when making the call. If Lutron, in its sole discretion, determines that an on-site visit or other remedial action is necessary, Lutron may send a Lutron Services Co. representative or coordinate the dispatch of a representative from a Lutron approved vendor to Customer's site, and/or coordinate a warranty service call between Customer and a Lutron approved vendor.

This warranty gives you specific legal rights, and you may also have other rights which vary from state to state. Some states do not allow limitations on how long an implied warranty lasts, so the above limitation may not apply to you. Some states do not allow the exclusion or limitation of incidental or consequential damages, so the above limitation or exclusion may not apply to you.

These products may be covered under the following U.S. patents: D422,567; and corresponding foreign patents.

National Electric Code and NEC are registered trademarks of the National Fire Protection Association, Inc., Quincy, Massachusetts.

Lutron and the sunburst logo are registered trademarks; and EcoSystem is a trademark of Lutron Electronics Co., Inc.

© 2006 Lutron Electronics Co., Inc.

Internet: [www.lutron.com](http://www.lutron.com)  
E-mail: [product@lutron.com](mailto:product@lutron.com)

### WORLD HEADQUARTERS

Lutron Electronics Co., Inc.  
7200 Suter Road, Coopersburg, PA 18036-1299 USA  
TEL +1.610.282.3800  
FAX +1.610.282.1243  
Technical Support 1.800.523.9466  
Toll-Free 1.888.LUTRON1

### Brazil

Lutron BZ do Brasil, Ltda.  
Avenida Brasil, 239, Jardim America,  
Sao Paulo-SP, CEP: 01431-001, Brasil  
TEL +55.11.3885.5152  
FAX +55.11.3887.7138

### Technical Support

USA, Canada, Caribbean: 1.800.523.9466  
Mexico: +1.888.235.2910  
Central/South America: +1.610.282.6701

### EUROPEAN HEADQUARTERS

**United Kingdom**  
Lutron EA Ltd.  
6 Sovereign Close, London, E1W 3JF UK  
TEL +44.(0)20.7702.0657  
FAX +44.(0)20.7480.6899  
Technical support +44.(0)20.7680.4481  
FREEPHONE 0800.282.107

### France

Lutron LTC, S.A.R.L.  
90 rue de Villiers, 92300 Levallois-Perret France  
TEL +33.(0)1.41.05.42.80  
FAX +33.(0)1.41.05.01.80  
FREEPHONE 0800.90.12.18

### Germany

Lutron Electronics GmbH,  
Landsberger Allee 201,  
13055 Berlin, Germany  
TEL +49.(0)30.9710.4590  
FAX +49.(0)30.9710.4591  
FREEPHONE 0800.5887.6635

### Italy

Lutron LDV, S.r.l.  
FREEPHONE 800.979.208

### Spain, Barcelona

Lutron CC, S.R.L.  
Gran Via del Carlos III, 84, planta 3ª 08028 Barcelona,  
Spain  
TEL +34.93.496.57.42  
FAX +34.93.496.57.01  
FREEPHONE 0900.948.944

### Spain, Madrid

Lutron CC, S.R.L.  
Calle Orense, 85, 28020 Madrid, Spain  
TEL +34.91.567.84.79  
FAX +34.91.567.84.78  
FREEPHONE 0900.948.944

### ASIAN HEADQUARTERS

#### Singapore

Lutron GL Ltd.  
15 Hoe Chiang Road,  
#07-03 Euro Asia Centre,  
Singapore 089316  
TEL +65.6220.4666  
FAX +65.6220.4333

#### China, Beijing

Lutron GL Ltd.  
Beijing Representative Office  
5th Floor, China Life Tower,  
No. 16 Chaowai Street,  
Chaoyang District, Beijing 100020 China  
TEL +86.10.5877.1817  
FAX +86.10.5877.1816

#### China, Guangzhou

Lutron GL Ltd.  
Guangzhou Representative Office  
Suite A09, 23/F Tower A, Center Plaza,  
161 LinHeXilu, Tian He District, Guangzhou 510620  
China  
TEL +86.20.2885.8266  
FAX +86.20.2885.8366

#### China, Shanghai

Lutron GL Ltd.  
Suite 07, 39th Floor, Plaza 66,  
1266 Nan Jing West Road,  
Shanghai, 200040 China  
TEL +86.21.6288.1473  
FAX +86.21.6288.1751

#### Hong Kong

Lutron GL Ltd.  
Unit 2808, 28/F, 248 Queen's Road East,  
Wanchai, Hong Kong  
TEL +852.2104.7733  
FAX +852.2104.7633

#### Japan

Lutron Asuka Co., Ltd.  
No. 16 Kowa Building, 4F,  
1-9-20, Akasaka, Minato-ku,  
Tokyo 107-0052 Japan  
TEL +81.3.5575.8411  
FAX +81.3.5575.8420

#### Asia Technical Hotlines

Northern China: 10.800.712.1536  
Southern China: 10.800.120.1536  
Hong Kong: 800.901.849  
Singapore: 800.120.4491  
Taiwan: 00.801.137.737  
Thailand: 001.800.120.665853  
Other Areas: +65.6220.4666

