

**WIRING LEGEND:**

- INPUT POWER (NORMAL)
- 2 #12AWG (4 mm<sup>2</sup>)
- CAT5E OR BETTER CABLE FOR LUTRON NETWORK. TERMINATED WITH RJ45 CONNECTORS (TO BE PROVIDED BY OTHERS). 328 FT (100 M) MAXIMUM RUN.
- QS SHADE CONTROL LINK
- 1-WAY RF COMMUNICATION
- 3 #18AWG (1.0 mm<sup>2</sup>)
- ▲ THERMOSTAT CONTROL LINK

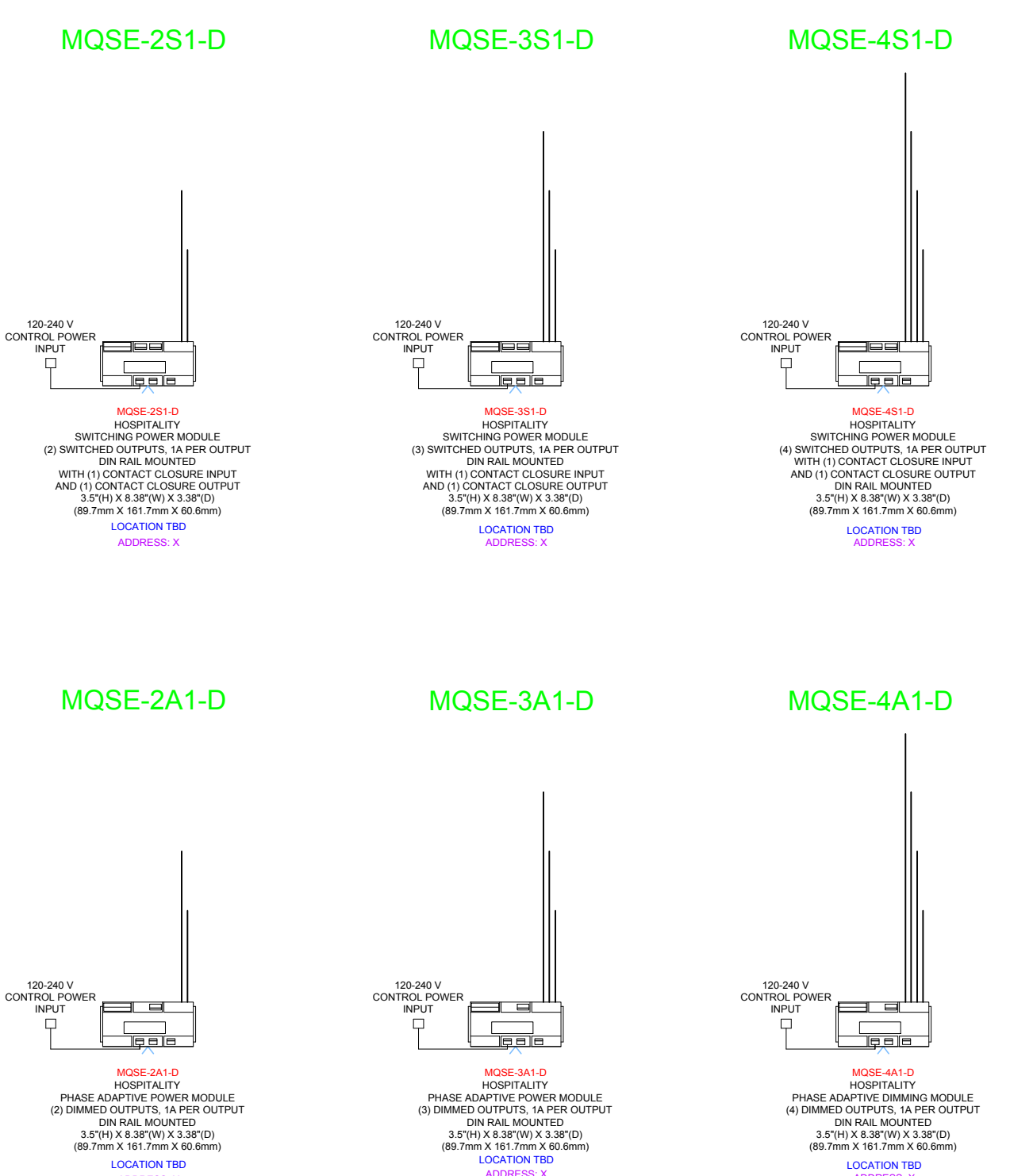
**US STYLE PALLADIOM ACCESSORIES**



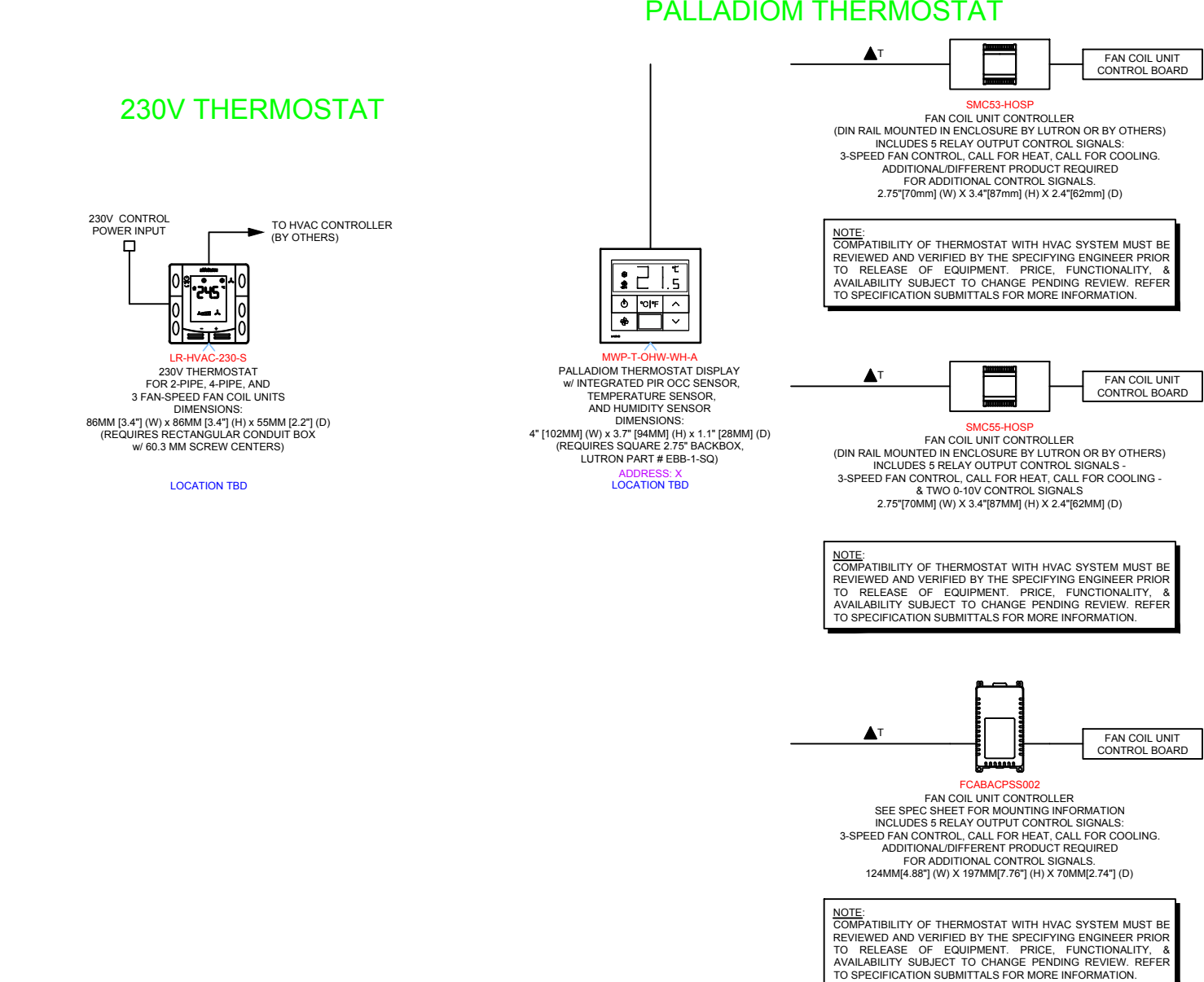
**US STYLE PALLADIOM KEYPADS**



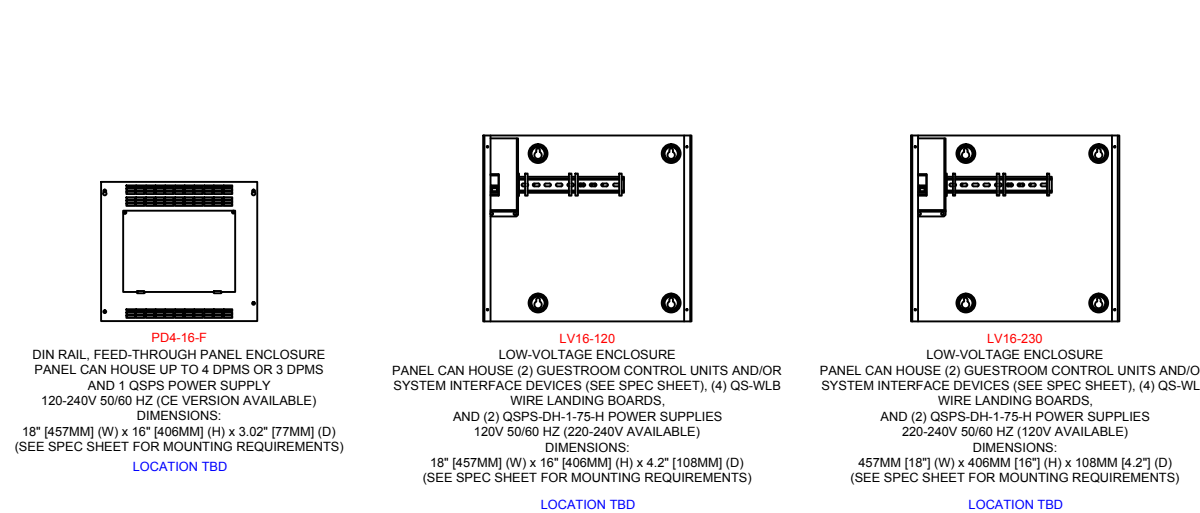
**DIN RAIL MOUNTED POWER MODULES**



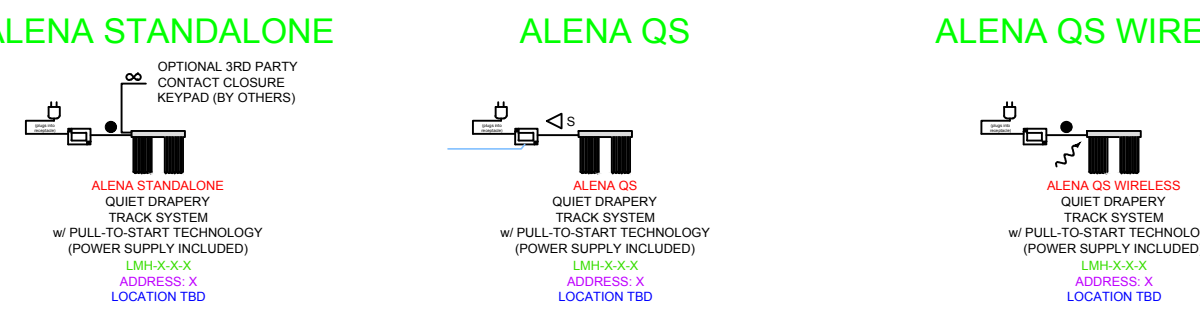
**THERMOSTATS**



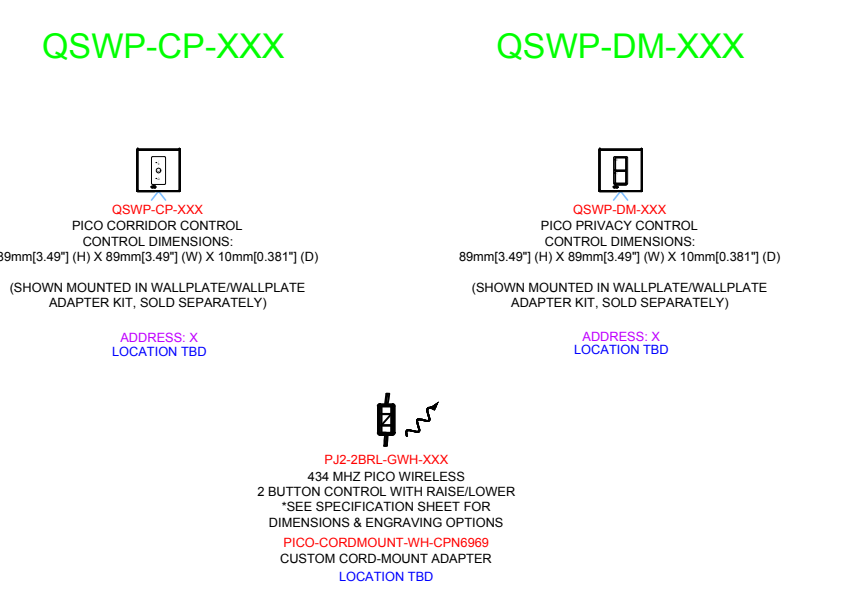
**ENCLOSURES**



**ALENA SHADES**



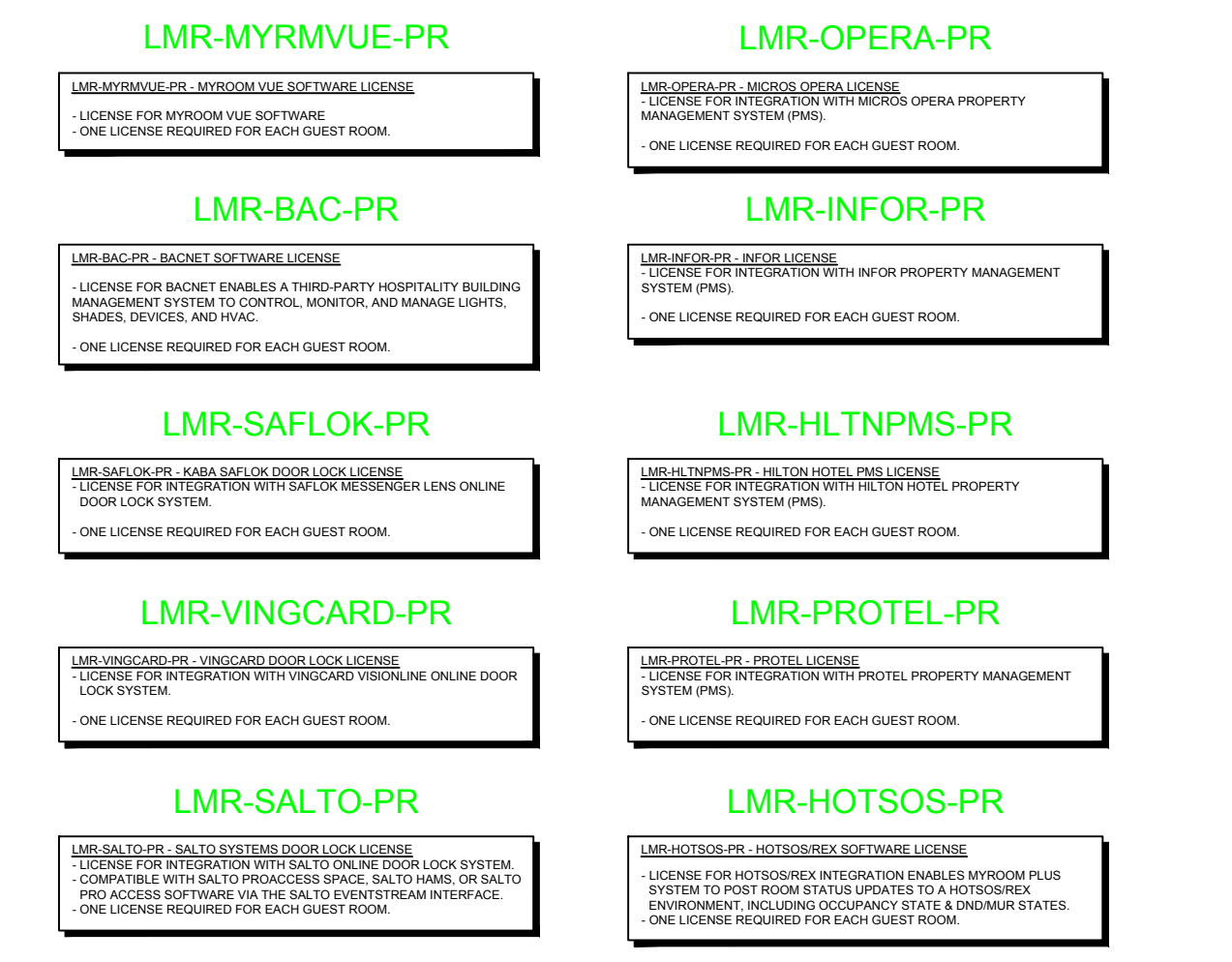
**HOSPITALITY PICOS**



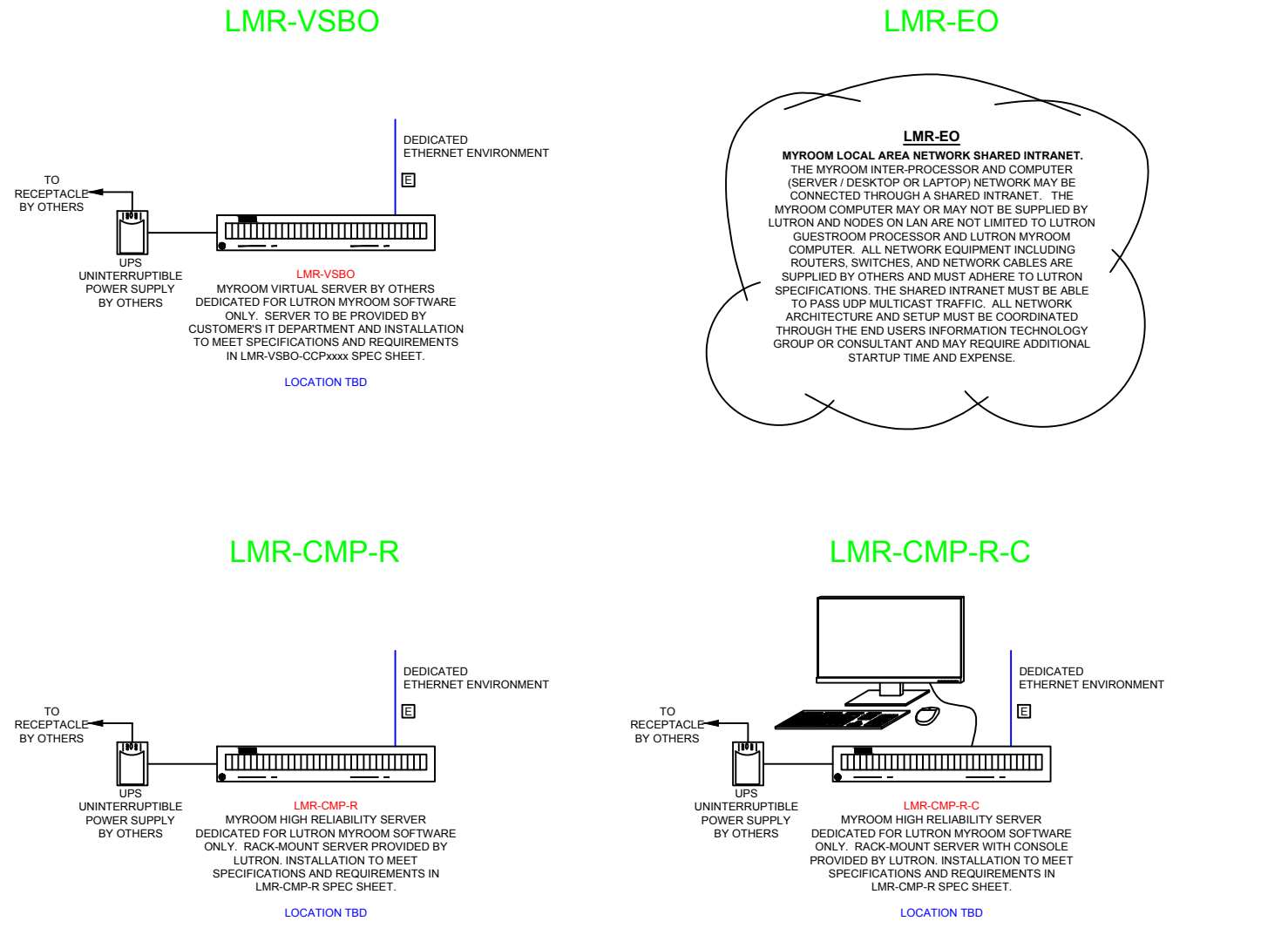
**SQUARE STYLE PALLADIOM KEYPADS**



**LICENSES**



**SERVER AND NETWORK CLOUD**



**PROCESSORS**

