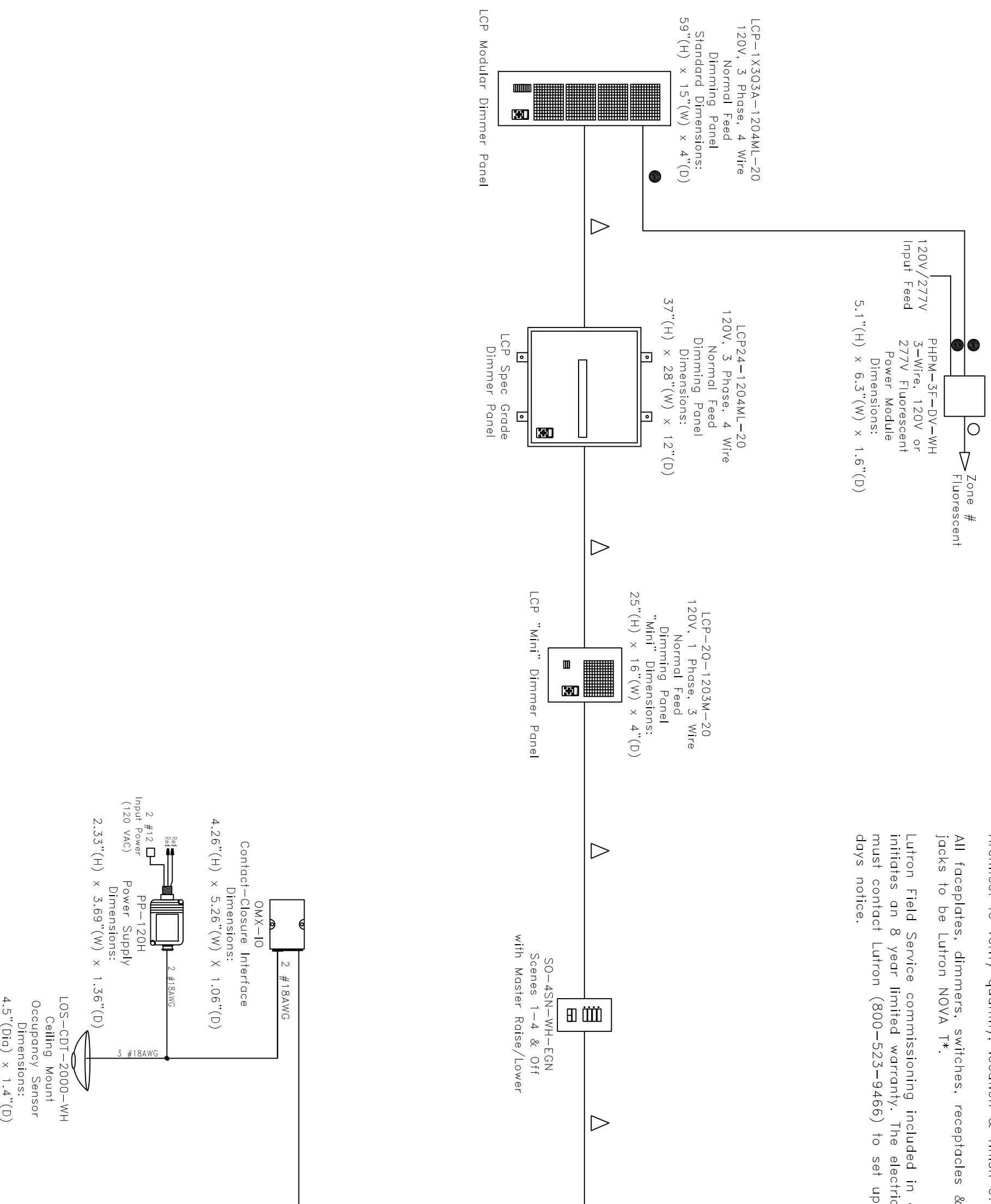


All dimming ballasts to be Lutron EcoSystem, Hi-Lume or Eco-10 type.  
 E.E. to confirm all circuiting requirements.  
 Architect to verify quantity, location & finish of all controls.  
 All faceplates, dimmers, switches, receptacles & cable/phone jacks to be Lutron NOVA T\*.  
 Lutron Field Service commissioning included in all systems initiates an 8 year limited warranty. The electrical contractor must contact Lutron (800-523-9466) to set up visit with 10 days notice.

- WIRING SYMBOLS**
- 2 #12AWG (2.5 mm<sup>2</sup>)
  - 3 #12AWG (2.5 mm<sup>2</sup>)
  - 120V Input Power
  - ▽ Lutron cable GRX-CBL-46L (5 Conductor Non-Plenum) or GRX-PCBL-46L (5 Conductor Plenum rated). Otherwise use 2 #12AWG (2.5mm<sup>2</sup>), 1 Belden #9461, and between panels add 1 #18AWG (1.0mm<sup>2</sup>) for emergency sensing.



### Typical LCP System

ONLINE DIAGRAM  
 CONCEPT ONLY  
 NOT FOR CONSTRUCTION

|                   |   |
|-------------------|---|
| Project Number:   | X |
| Drawn By:         | X |
| Drawing Revision: | X |
| Drawing Date:     | X |
| Sheet:            | X |