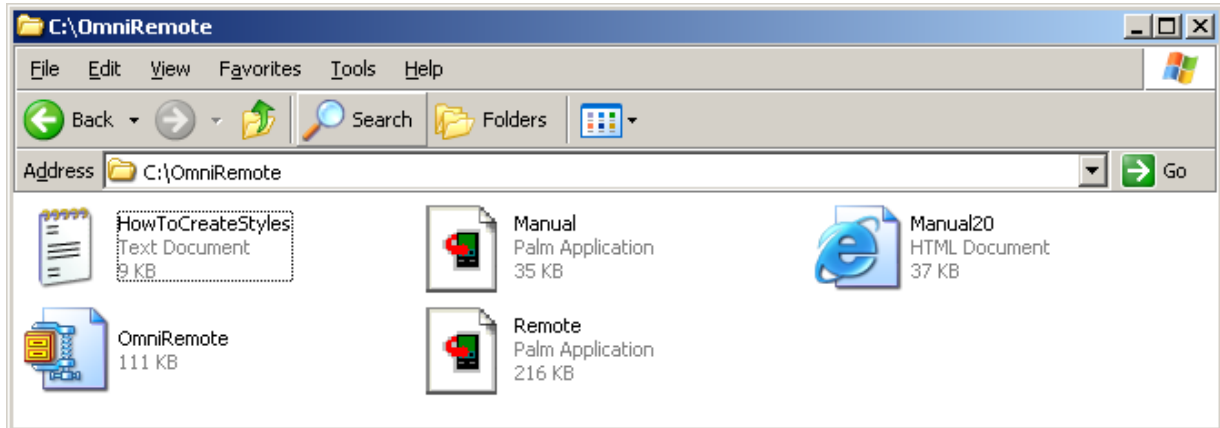
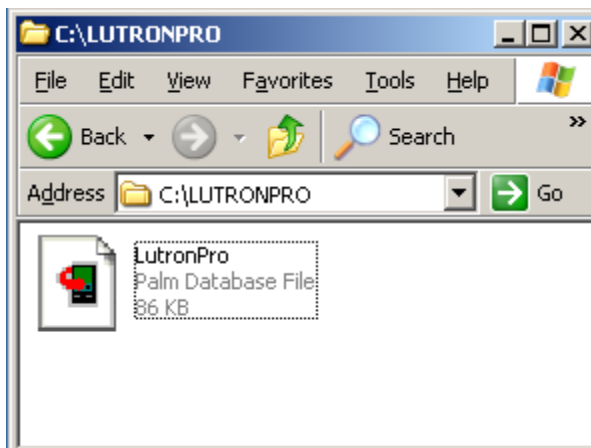


LutronPro Installation Instructions

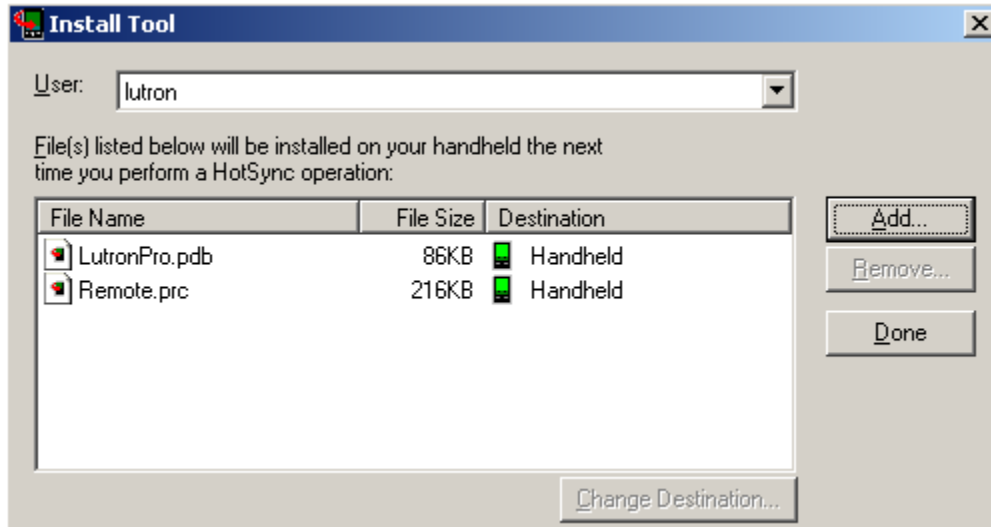
1. **Download OmniRemote Pro™** The LutronPRO software is designed to be used with OmniRemote Pro™ software, which is available for download at www.pacificneotek.com. Save the application to your hard disk. Once downloaded, you will need to unzip the files.



2. **Download LutronPRO** The LutronPRO database as well as databases for other Lutron products are available for download at www.lutron.com. To get to the LutronPRO download page, select Products – Commercial – GRAFIK Eye – GRAFIK Eye 3500/4500 from the Lutron home page. Save the file LutronPRO to your hard disk.



- 3. Install the Files to Your PDA** Use your Palm Install Tool to transfer files Remote.prc and LutronPRO.pdb to your PDA. Perform a HotSync to finalize the operation. If successful, Remote will appear on your Palm Pilot™ home screen.

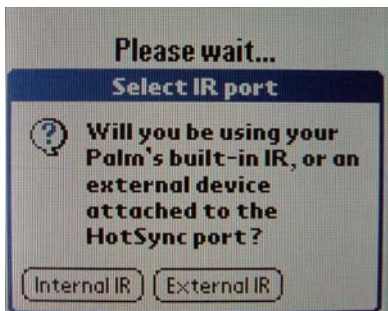


- 4. Disconnect the PDA from the Computer and Power** The Remote application will not start unless your PDA is completely disconnected from both the HotSync cable and the power cable.
- 5. Start the OmniRemote Software** Before your PDA will function with Lutron GRAFIK Eye® products, OmniRemote must first be configured with the correct settings. Click on the Remote icon on your home screen.

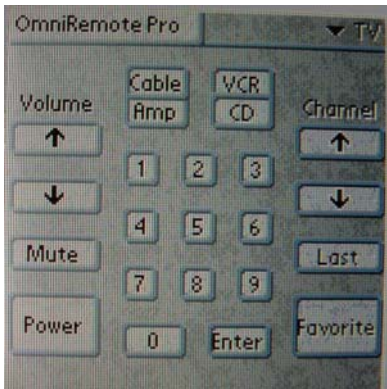


- 6. Set-up OmniRemote for use with GRAFIK Eye®**

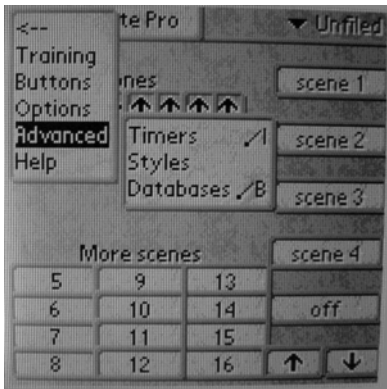
First select the IR transmitter location. If your PDA has an external IR device, select external. Otherwise, select internal.



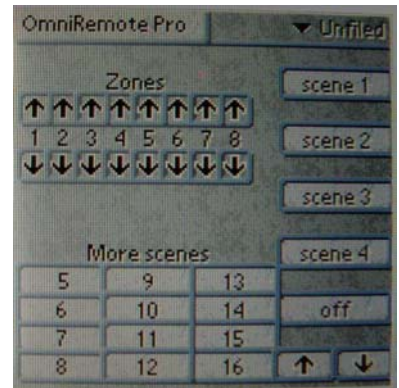
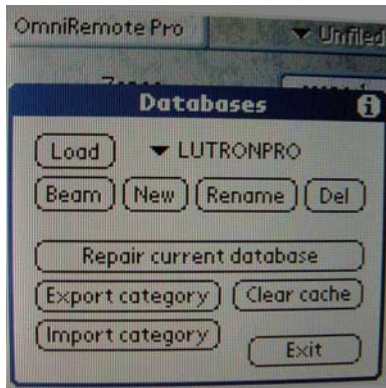
The OmniRemote Pro™ default screen will now be displayed. From this screen, select the OmniRemote Pro tab from the upper left corner to access the drop down menu.



From the drop down menu, select Advanced, then Databases. The Databases menu will be displayed.



Select Choose database, then LutronPro. Tap Load.



Congratulations, the software is installed and ready to use!