

Panels

120V, 1ph-2w N/E

120V, 1 PHASE 2 WIRE
NORMAL/EMERGENCY FEED
LOAD INPUT POWER

120V, 1ph-2w Normal

120V, 1 PHASE 2 WIRE
NORMAL FEED
LOAD INPUT POWER

120V, 1ph-3w N/E

120V, 1 PHASE 3 WIRE
NORMAL/EMERGENCY FEED
LOAD INPUT POWER

120V, 1ph-3w Normal

120V, 1 PHASE 3 WIRE
NORMAL FEED
LOAD INPUT POWER

120V, 3ph-4w N/E

120V, 3 PHASE 4 WIRE
NORMAL/EMERGENCY FEED
LOAD INPUT POWER

120V, 3ph-4w Normal

120V, 3 PHASE 4 WIRE
NORMAL FEED
LOAD INPUT POWER

120V, N/E Feed-Thru

120V, NORMAL/EMERGENCY
FEED-THROUGH CIRCUITS
(TYPICAL OF X CIRCUITS)

120V, Normal Feed-Thru

120V, NORMAL
FEED-THROUGH CIRCUITS
(TYPICAL OF X CIRCUITS)

277V, 3ph-4w N/E

277V, 3 PHASE 4 WIRE
NORMAL/EMERGENCY FEED
LOAD INPUT POWER

277V, 3ph-4w Normal

277V, 3 PHASE 4 WIRE
NORMAL FEED
LOAD INPUT POWER

277V, N/E Feed-Thru

277V, NORMAL/EMERGENCY
FEED-THROUGH CIRCUITS
(TYPICAL OF X CIRCUITS)

277V, Normal Feed-Thru

277V, NORMAL
FEED-THROUGH CIRCUITS
(TYPICAL OF X CIRCUITS)

220-240V, 1ph-2w N/E

220-240V, 1 PHASE 2 WIRE
NORMAL/EMERGENCY FEED
LOAD INPUT POWER

220-240V, 1ph-2w Normal

220-240V, 1 PHASE 2 WIRE
NORMAL FEED
LOAD INPUT POWER

220-240V, 1ph-3w N/E

220-240V, 1 PHASE 3 WIRE
NORMAL/EMERGENCY FEED
LOAD INPUT POWER

220-240V, 1ph-3w Normal

220-240V, 1 PHASE 3 WIRE
NORMAL FEED
LOAD INPUT POWER

220-240V, 3ph-4w N/E

220-240V, 3 PHASE 4 WIRE
NORMAL/EMERGENCY FEED
LOAD INPUT POWER

220-240V, 3ph-4w Normal

220-240V, 3 PHASE 4 WIRE
NORMAL FEED
LOAD INPUT POWER

220-240V, N/E Feed-Thru

220-240V, NORMAL/EMERGENCY
FEED-THROUGH CIRCUITS
(TYPICAL OF X CIRCUITS)

220-240V, Normal Feed-Thru

220-240V, NORMAL
FEED-THROUGH CIRCUITS
(TYPICAL OF X CIRCUITS)

230V, 1ph-2w N/E

230V, 1 PHASE 2 WIRE
NORMAL/EMERGENCY FEED
LOAD INPUT POWER

230V, 1ph-2w Normal

230V, 1 PHASE 2 WIRE
NORMAL FEED
LOAD INPUT POWER

230V, 1ph-3w N/E

230V, 1 PHASE 3 WIRE
NORMAL/EMERGENCY FEED
LOAD INPUT POWER

230V, 1ph-3w Normal

230V, 1 PHASE 3 WIRE
NORMAL FEED
LOAD INPUT POWER

230V, 3ph-4w N/E

230V, 3 PHASE 4 WIRE
NORMAL/EMERGENCY FEED
LOAD INPUT POWER

230V, 3ph-4w Normal

230V, 3 PHASE 4 WIRE
NORMAL FEED
LOAD INPUT POWER

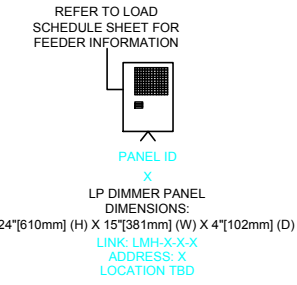
230V, N/E Feed-Thru

230V, NORMAL/EMERGENCY
FEED-THROUGH CIRCUITS
(TYPICAL OF X CIRCUITS)

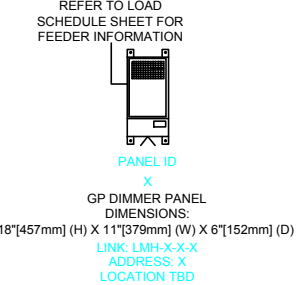
230V, Normal Feed-Thru

230V, NORMAL
FEED-THROUGH CIRCUITS
(TYPICAL OF X CIRCUITS)

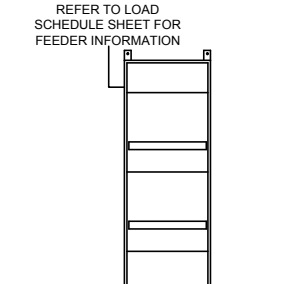
LP 1-3



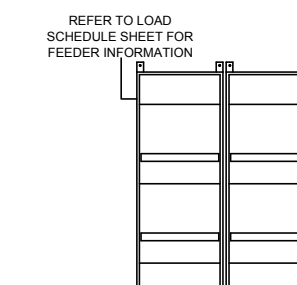
GP 3-4



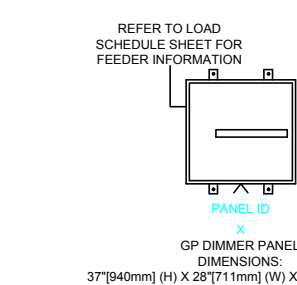
GP 36



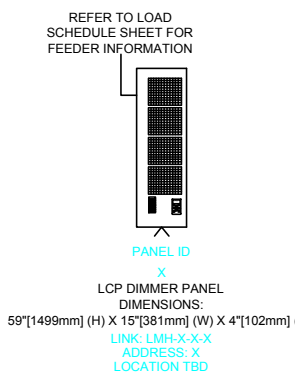
GP 48-72



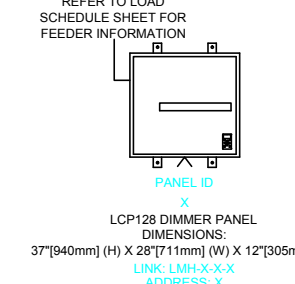
GP 8-24



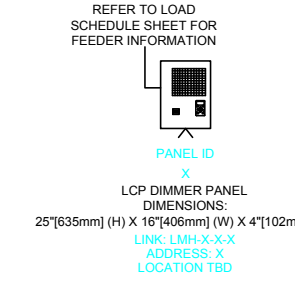
LCP



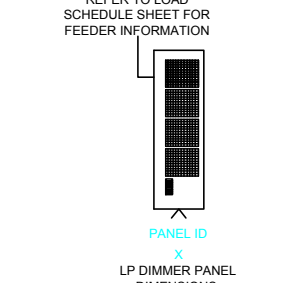
LCP128-SPEC GRADE



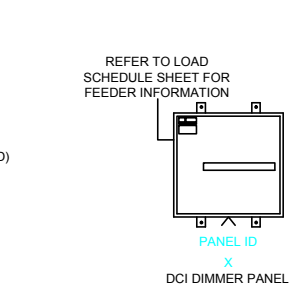
LCP-MINI



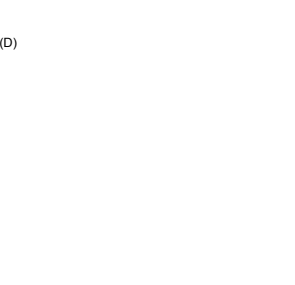
LP



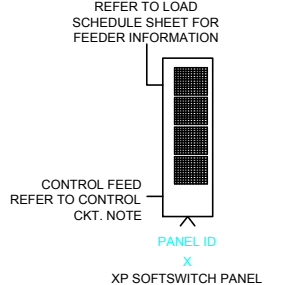
DCI



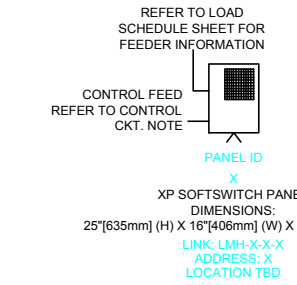
DCI



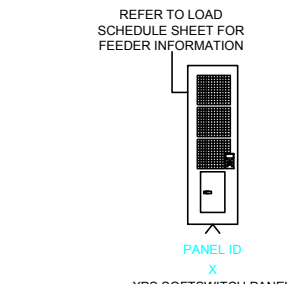
XP-FTML



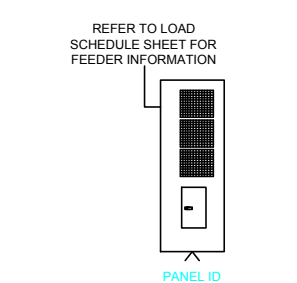
XP-FTML-MINI



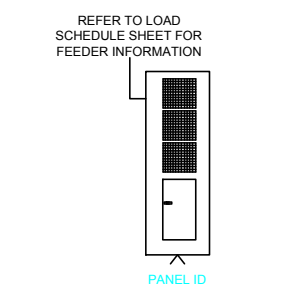
XPS-4-28 120V BKRS



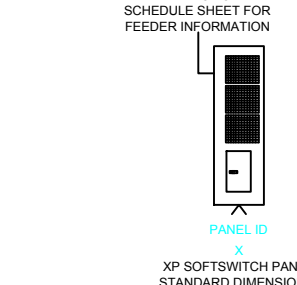
XP-32-42 120V, 4-28 277V BKRS



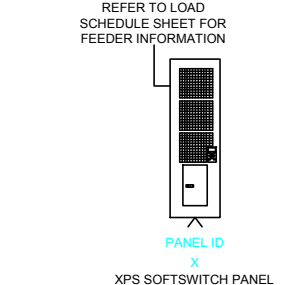
XP-32-42 277V BKRS



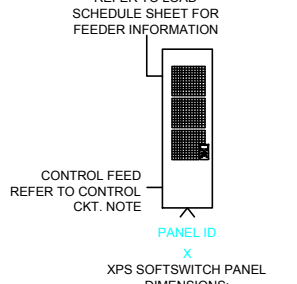
XP-4-28 120V BKRS



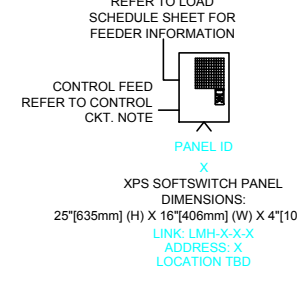
XPS-8-28 120V BKRS



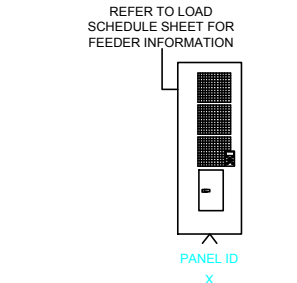
XPS-FT



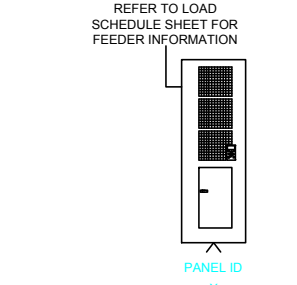
XPS-FT-MINI



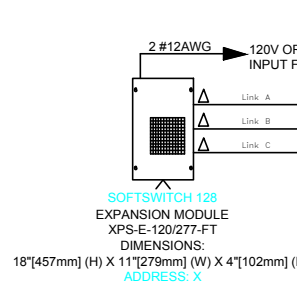
XPS-32-42 120V, 8-28 277V



XPS-32-42 277V BKRS



XPS-128 EXPANSION



PANELS

BLOCK LIBRARY

WIRING LEGEND:

△ LUTRON CABLE GRX-CBL-46L (5 CONDUCTOR NON-PLENUM) OR GRX-PCBL-46L (5 CONDUCTOR PLENUM RATED). OTHERWISE USE 2 #12AWG (2.5MM²), 1 BELDEN #9461, AND BETWEEN PANELS ADD 1 #18AWG (1.0MM²) FOR EMERGENCY SENSING CABLE BY OTHERS.

Drawn By: ALF

Drawing Revision: 1

Drawing Date: 3.31.15