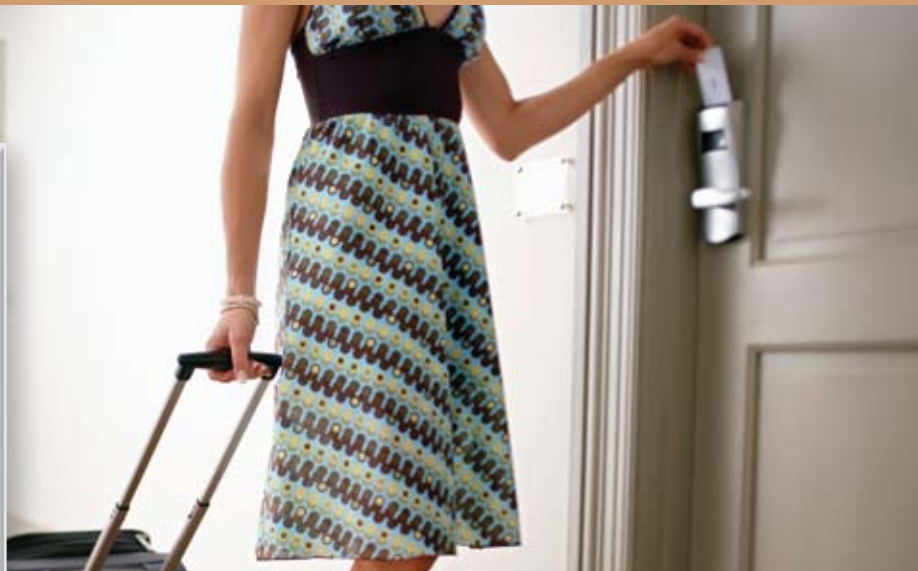
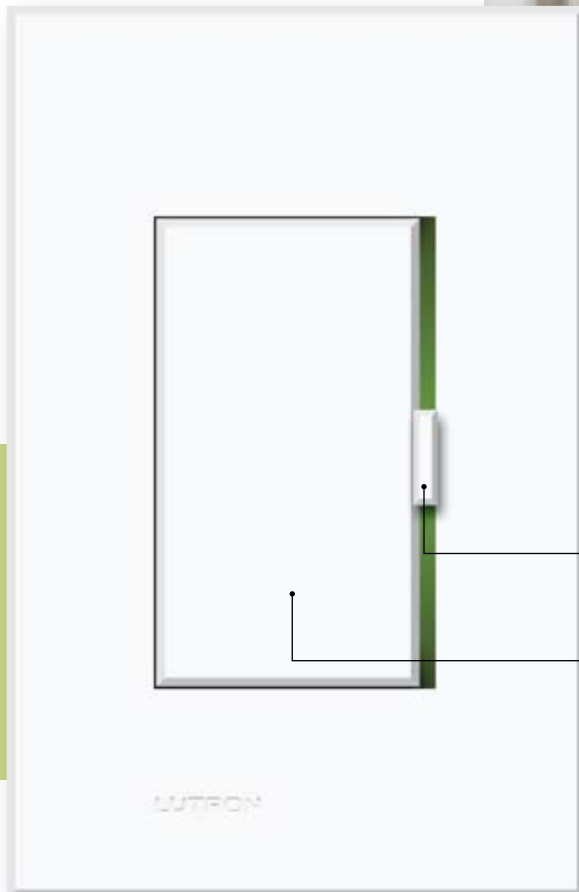


**Enhance the guest room experience
and save energy with Stanza™**

Designed to meet the needs of hotel guests, the Stanza™ light control system allows guests to control their lights and draperies, enhance their safety and security, and save energy. It can operate as a stand-alone system or integrate with other guest room systems, including Lutron automated window treatments, key card switches, occupancy/vacancy sensors, and property management systems.

The Stanza™ entry keypad ensures a warm welcome upon your guest's entry and energy savings when your guest leaves the room.
(shown actual size)



large backlit slider

large button

Stanza™ dimmer shown actual size.

intuitive and ergonomic controls

Using large, easy-to-read and easy-to-operate components, all Stanza™ controls are designed to support universal design/ADA considerations.

convenience and flexibility

Guests can control lights individually with a local control, or all together with a master keypad. Systems can be built using individual components, allowing design flexibility.

enhanced guest security and safety

Master On/Off and locator light function assures guest safety and security.

energy efficiency

The Away button by the entrance meets energy standards, supports sustainable designs, and allows guests to save energy easily by turning all the lights off at the touch of a button.

proven wireless RF technology – simple to install

Proven wireless RF technology from Lutron® requires no control wiring, making it cost-effective to install.

It is suitable for both new construction and renovations, and accommodates vertically wired buildings.



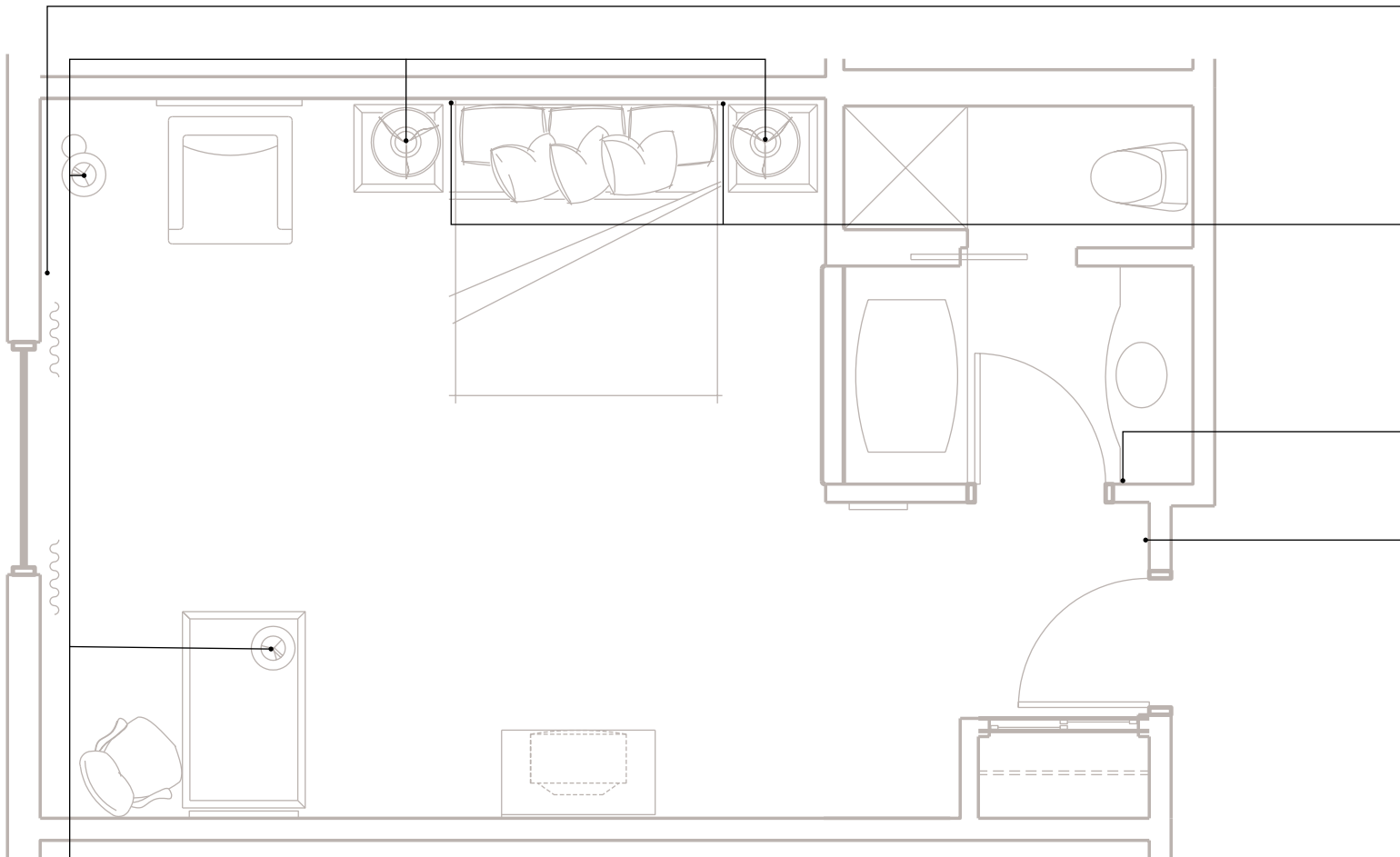
Unique digital addresses are assigned to each room for unsurpassed reliability.

Wireless control of every light point and drapery



2-way
RF signal

Wireless Stanza™ technology is perfect for both new construction and retrofit projects. Stanza™ line-voltage dimmers and switches, and the lamp socket dimmer/switch, can each be controlled individually. At the same time, each of those devices communicates to a wireless keypad that can control all the lights from one place. There are no additional components or control wiring requirements.



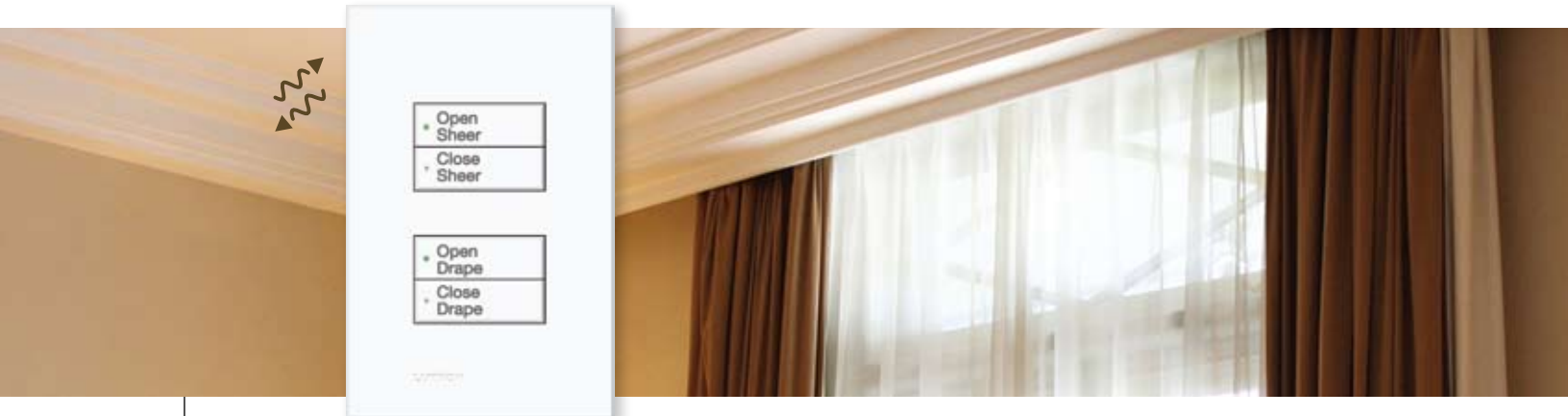
sample of customizable Stanza™ guestroom solution

lamp socket dimmer/switch

- provides audible and tactile feedback to support Universal Design
- converts floor and table lamps into dimmable light points controlled by Stanza™
- features anti-theft locking mechanism
- acts as switch when used with compact fluorescent lamps

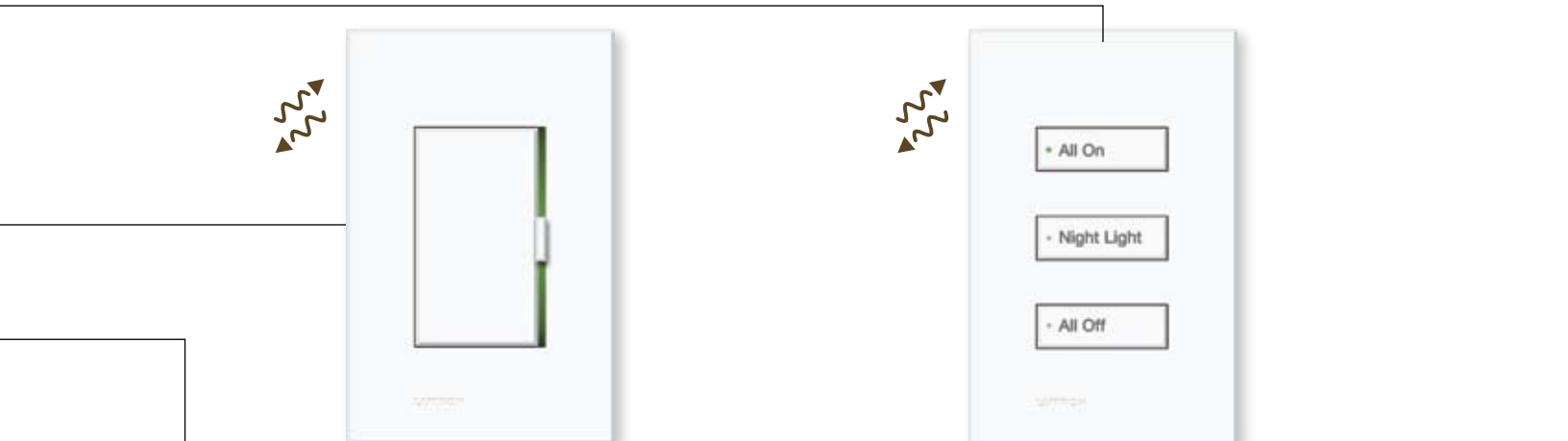
Lamp socket dimmer/switch shown with halogen lamp for increased energy savings and warm color.





dual drapery control keypad

- convenient bedside or wall control of sheer and blackout drapes



dimmer

- provides local dimming control of a light point
- integrates keypad via Lutron® RF technology

bedside keypad

- available in 3-, 4-, and 5-button configurations
- control all lights from bedside
- turn on night light from bedside



entry light dimmer and key card switch

- provide a warm and inviting “Welcome” scene when guest arrives
- ensure energy savings with key card control of room lighting
- provide local control of entry light