

Lutron Linear Recessed and Video Conference Fixture Solutions



Lutron Linear Recessed and Video Conference Fixture Solutions

What are linear recessed and video conference fixtures?

Lutron fixture solutions provide high performance controllable LED fixtures with superior aesthetics for “smart offices” and meeting rooms, functional training spaces, and video conferencing applications. These complete solutions ensure compatibility between controls, ballast/driver, and fixture, while providing focus on high design, efficiency, and outstanding dimming performance.

We offer two types of troffer fixtures: linear recessed and video conference fixtures. Both types are available in LED and fluorescent options, with LED options providing the same light output/performance as fluorescents, but using half the power.

Linear recessed volumetric fixture

The volumetric fixture is energy-efficient, fully luminous, and provides soft ambient light. It's ideal for task lighting; its optical design provides low glare and eliminates shadowing. Typical applications include open office, board rooms, meeting rooms, public areas.



- 2 x 2 ft or 2 x 4 ft LED or fluorescent volumetric fixture

Video conference indirect wash fixtures

Lutron video conference fixtures provide the right lighting quantity, quality, and angle in video conferencing spaces to ensure optimal images. We offer three types of indirect wash fixtures. All types are available in fluorescent or LED options ideal for audio/video, conference and training rooms.



- 2 x 2 ft LED or fluorescent indirect wash fixture



- 1 x 2 ft LED or fluorescent indirect wash fixture



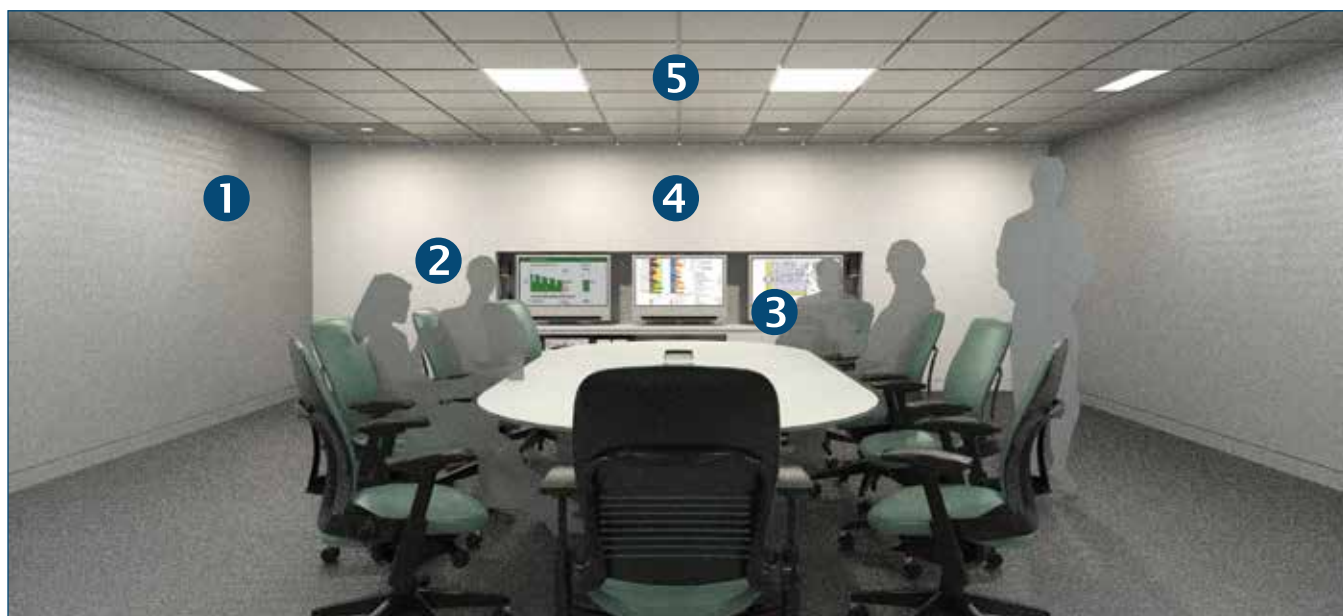
- 1 x 2 ft LED or fluorescent indirect wash fixture with a 45° diagonal mount

Why do you need to use linear recessed and video conference fixtures?

During a video conference the camera can't "see" the way the human eye can, so the camera often produces saturated images or images with shadows on them, resulting in poor picture quality. Using linear wall wash and indirect wash fixtures, which illuminate both vertically and horizontally, helps produce images that have better contrast and sharpness. The right combination of fixtures ensures high quality lighting on the participants, wall, and table surfaces, and the area around the display, screen, or monitor.

- 1 Indirect wash fixtures evenly illuminate rear and side walls from floor to ceiling, providing good contrast between participants and the room for a quality video image.
- 2 Indirect wash fixtures illuminate participants with vertically focused lighting (between a 45° and 60° angle), minimizing shadows on their faces.
- 3 Indirect wash fixtures illuminate the tabletop surfaces horizontally, minimizing shadows on faces and providing adequate task lighting.
- 4 Recessed downlights or indirect wash fixtures illuminate the presentation area with flexible lighting, and adjust contrast on presenters and wall displays.
- 5 Linear recessed fixtures provide soft general illumination for multi-purpose spaces used for trainings, meetings, and video conferences.

All Lutron fixtures include EcoSystem-enabled dimming ballasts or drivers. By incorporating Lutron's preset dimming controls, the fixtures can control lighting levels, creating the ideal contrast for the camera. For more information, please reference the Video Conference White Paper, found at [Lutron.com](https://www.lutron.com).

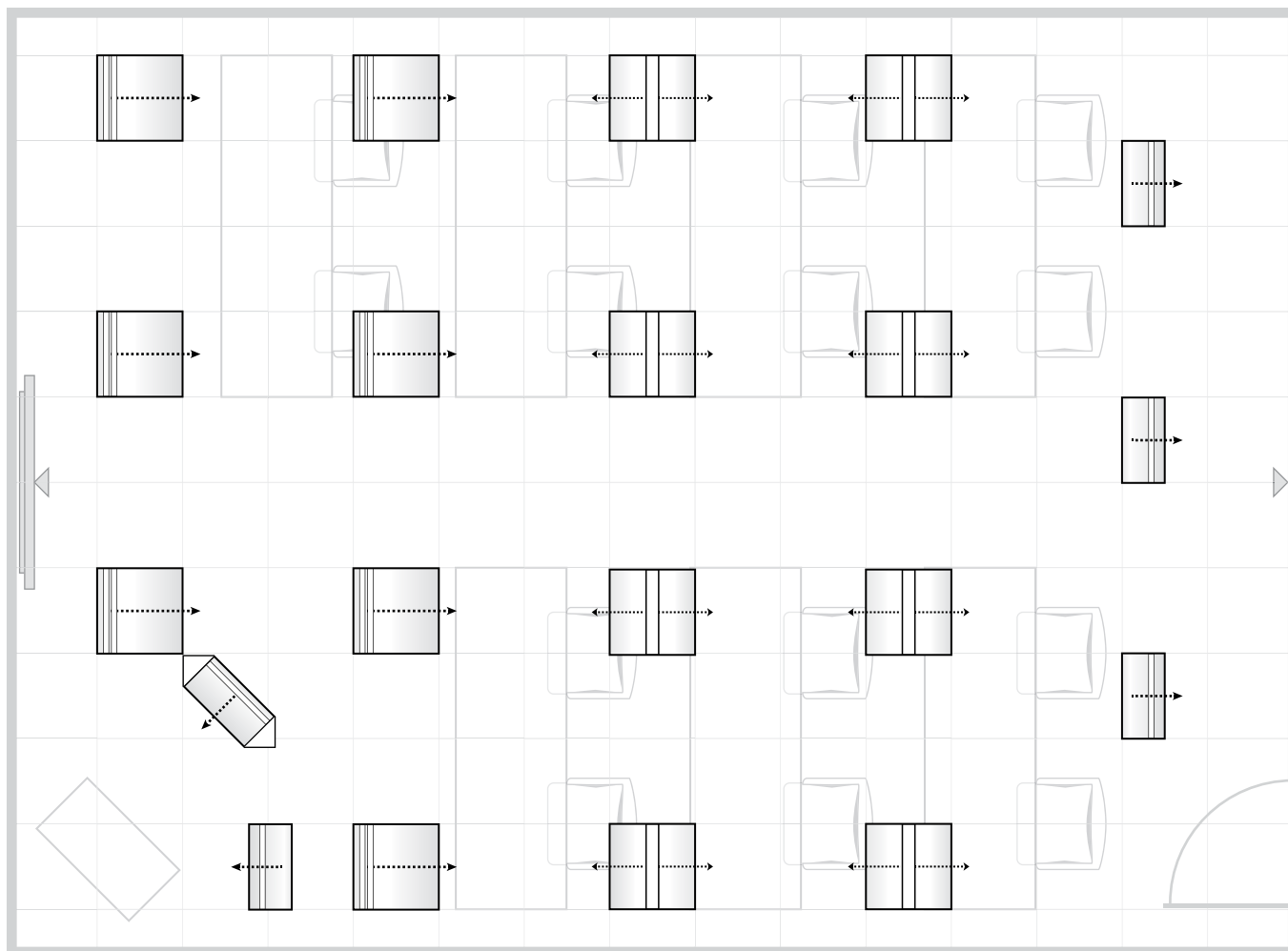


Lutron Linear Recessed and Video Conference Fixture Solutions

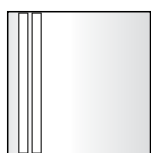
Designing a flexible use training and video conferencing room

Here are two examples of how you might use Lutron linear recessed and video conference fixtures in a space.

Training room plan



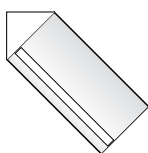
Key



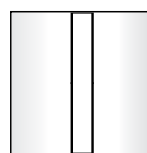
Video conference
2 ft x 2 ft indirect
wash fixtures



Video conference
1 ft x 2 ft indirect
wash fixtures



Video conference
1 ft x 2 ft indirect
wash fixture with
45° diagonal mount

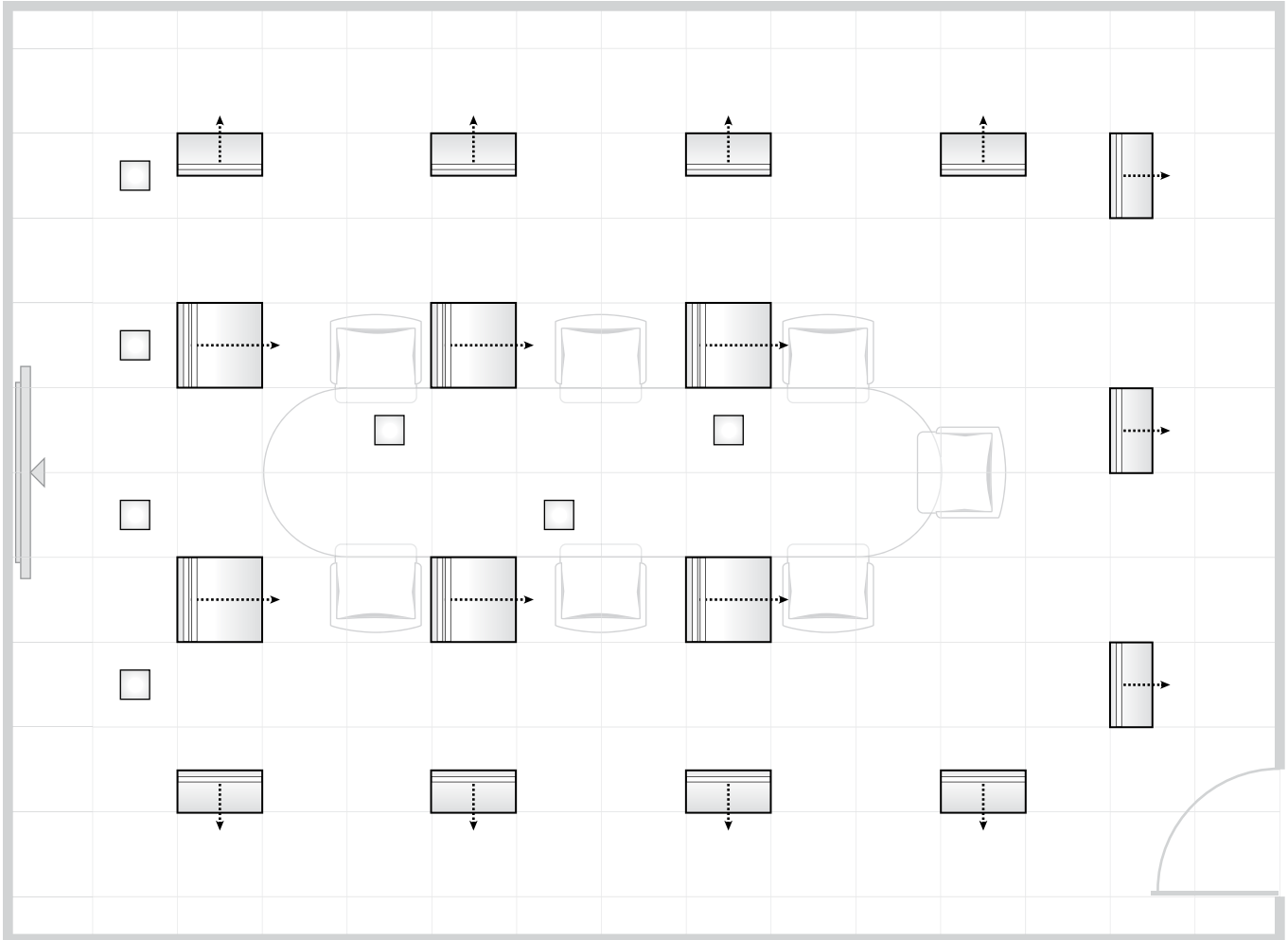


Linear
recessed
volumetric
fixtures

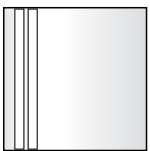


Camera

Video conferencing room plan



Key



Video conference
2 ft x 2 ft indirect
wash fixtures



Video conference
1 ft x 2 ft indirect
wash fixtures



Finiré® LED
recessed lighting*



Camera

* For more information on Finiré LED recessed lighting, please refer to page 12.

Lutron Linear Recessed and Video Conference Fixture Solutions

Linear recessed volumetric LED and fluorescent fixtures



Lutron's volumetric fixture is a cost-effective, energy-efficient (over 100lm/watt), fully luminous fixture that provides soft ambient illumination and is ideal for conference rooms. The optical design eliminates the shadowing that is common with many other troffer fixtures.

Features and capacities

- Lutron digital dimming driver or ballast standard
- Dim smoothly and continuously from 100% to 1%(LED, T5/T8)
- 2 ft x 2 ft or 2 ft x 4 ft
- LED, T5 and T8 fluorescent options available
- Approved to UL and CSA Standards
- 10 year/50,000 hour warranty for LED fixture



How to Specify LED Fixtures

Example Model Number: FXLRVM2HNLEUTBXX

1 Product FX = Fixtures	5 Color Temperature NL = Neutral White LED, 3500K CL = Cool White LED, 4000K
2 Family LR = Linear Recessed	6 Control 3U = 1% 3-wire, 120 – 277V EU = 1% EcoSystem with Soft-on, Fade-to-Black, 120 – 277V
3 Fixture type VM = Volumetric	7 Mounting type TB = T-Bar SM = Surface Mount GY = Gypsum
4 Size 2L = 2ft Low Power 32W, 3400lm 2H = 2ft High Power 42W, 5000lm 4L = 4ft Low Power 42W, 5300lm 4H = 4ft High Power 62W, 7500lm ¹	8 Options XX = None E7 = Emergency Driver

¹ EcoSystem Only

How to Specify Fluorescent Fixtures

Example Model Number: FXLRVM22SL232UHDTBXXWH

1	Product FX = Fixtures	8	Region U = UL – North America**
2	Family LR = Linear Recessed	9	Control options HD = 1% 3-wire HS = 1% EcoSystem
3	Fixture type VM = Volumetric	10	Mounting type TB = T-Bar GY = Gypsum SM = Surface Mount
4	Size 22 = 2 ft x 2 ft 24 = 2 ft x 4 ft	11	Options XX = None E1 = T8/T5HE 4 ft Emergency Ballast E3 = T5HE, 2 ft Emergency Ballast E5 = T5HO, Emergency Ballast
5	Lens options SL = Standard	12	Color Finish WH = Matte White
6	Lamps 2 = 2 Lamps 3 = 3 Lamps; T8 only		
7	Lamp type 14 = 14 W, T5HE, 2 ft 17 = 17 W, T8, 2 ft 24 = 24 W, T5HO, 2 ft 28 = 28 W, T5HE, 4 ft 32 = 32 W, T8, 4 ft 50 = 50 W, T5 Twin Tube, 2 ft* 54 = 54 W, T5HO, 4 ft RW = 25, 28, 30W, T8 Reduced Wattage, 4 ft		

*T5 Twin Tube option is 5% dimming available in 2ftx2ft fixtures only.

**The standard UL listed option is Trade Adjustment Assistance (TAA) compliant and Buy American Act (BAA) compliant.

Custom options available – contact
fixtures@lutron.com.

Lutron Linear Recessed and Video Conference Fixture Solutions

Video conference indirect wash LED and fluorescent fixtures



These fixtures are ideal for video conferencing and distance learning spaces, where lighting focused on the participants and presenter needs to be precise and glare-free. The fixtures designs shields the lamps from view, enhancing the look and feel of the room.

Features and capacities

- Lutron digital dimming driver or ballast standard
- Dim smoothly and continuously from 100% to 1% (LED) or 100% to 5% (T5TT)
- 1 ft x 2 ft or 2 ft x 2 ft
- LED and T5 Twin Tube fluorescent options available
- Chicago plenum
- Approved to UL and CSA Standards
- 10 year/50,000 hour warranty for LED fixture

How to Specify LED Fixtures

Example Model Number: FXVTIW1XNLEUTBXX

1 Product FX = Fixtures	5 Color Temperature NL = Neutral White LED, 3500K CL = Cool White LED, 4000K
2 Family VT = Video Conference	6 Control 3U = 1% 3-wire, 120 – 277V EU = 1% EcoSystem with Soft-on, Fade-to-Black, 120 – 277V
3 Fixture type IW = Indirect Wash	7 Mounting type TB = T-Bar GY = Gypsum SM = Surface Mount DB = 45 degree Diagonal ¹
4 Size 1X = 1 ft x 2 ft 24W, 1600lm 2X = 2 ft x 2 ft 45W, 4000lm	8 Options XX = None E7 = Emergency Driver

¹ 1 ft x 2 ft and T-Bar mount only

How to Specify Fluorescent Fixtures

Example Model Number: FXVTIW12XX150UHDTBXXWH

1	Product FX = Fixtures	8	Region U = UL – North America **** I = International – Metric
2	Family VT = Video Conference	9	Control options HD = 5% 3-wire dimming
3	Fixture type IW = Indirect Wash	10	Mounting type TB = T-Bar GY = Gypsum SM = Surface Mount
4	Size 12 = 1 ft x 2 ft 22 = 2 ft x 2 ft	11	Options XX = None E3 = Emergency Ballast
5	Lens options XX = None DB = 45° Diagonal*	12	Color Finish WH = Matte White
6	Lamps 1 = 1 Lamp ** 2 = 2 Lamps ***		
7	Lamp type 50 = 50W, T5 Twin Tube		

* 1 ft x 2 ft fixture and T-Bar mount only

** 1 ft x 2ft only

*** 2ft x 2ft only

**** The standard UL listed option is Trade Adjustment Assistance (TAA) compliant and Buy American Act (BAA) compliant.

Custom and metric options available –
contact fixtures@lutron.com.

Lutron Linear Recessed and Video Conference Fixture Solutions

Improve your ROI with rebates and incentives!

Lutron's LED volumetric fixtures are now DesignLights Consortium (DLC) qualified. DLC is a collaboration of utility companies and regional energy efficiency organizations committed to raising awareness of the benefits of efficient lighting in commercial applications. Many rebates and incentives are offered by utilities in most states for LED lighting. To qualify, utilities often require DLC listed products.

Two types of rebates are available:

- **Prescriptive rebates** provide a specific predetermined dollar amount for each fixture replaced.
- **Custom rebates** are based on the total energy savings for a specific project and are intended for approved fixtures not covered by a prescriptive program.

Online Lutron Rebate and Incentives Locator at www.lutron.com/incentives
email: incentives@lutron.com

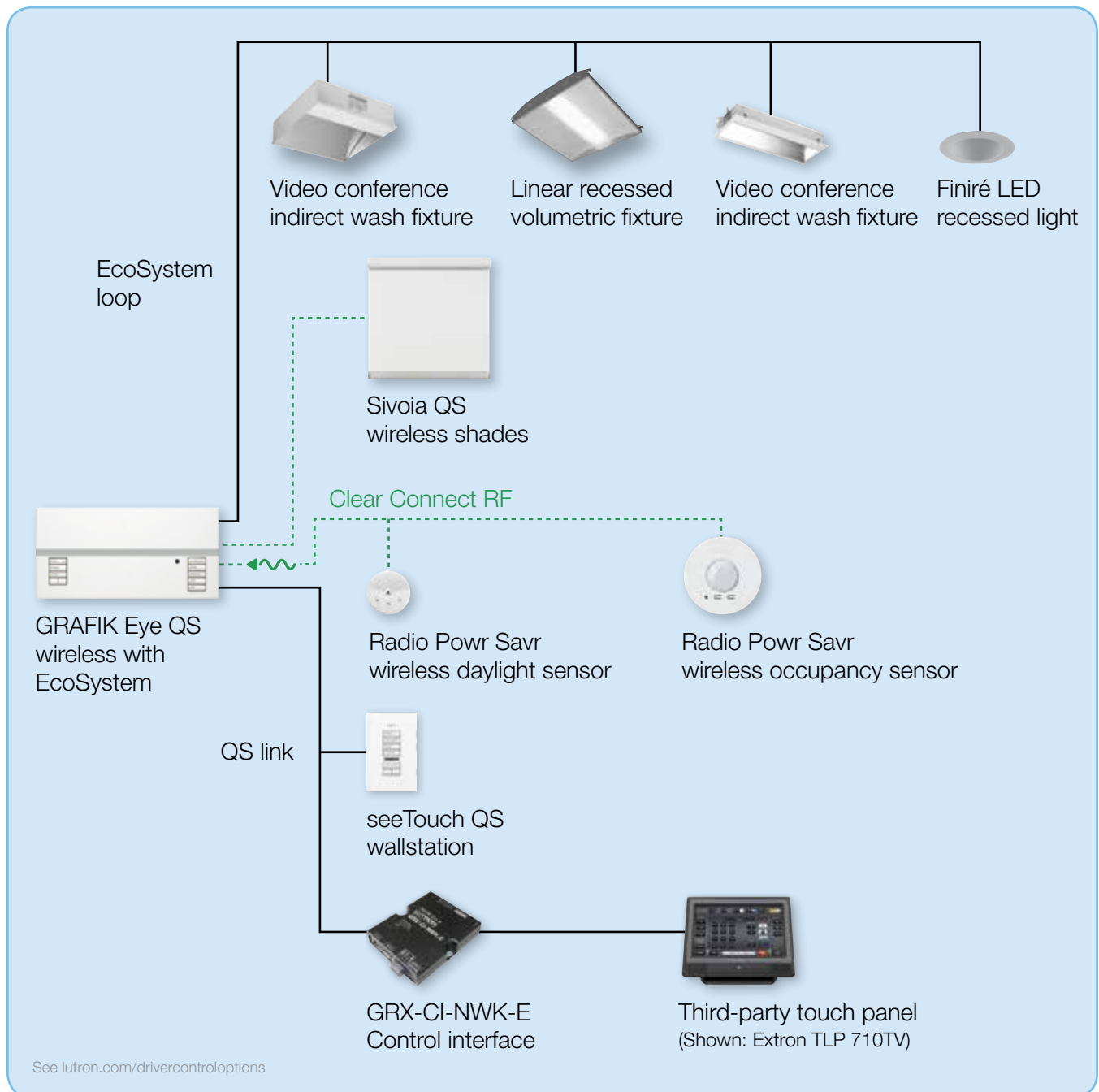
* **DLC Qualified Product List**
designlights.org/qpl



Creating a complete Lutron solution

Because a video conferencing room is often used for other needs, the lighting in the space has to be flexible. You can create a complete, flexible solution using fixtures, occupancy sensors, shades, and controls, as shown in the layout below.

System layout with GRAFIK Eye QS

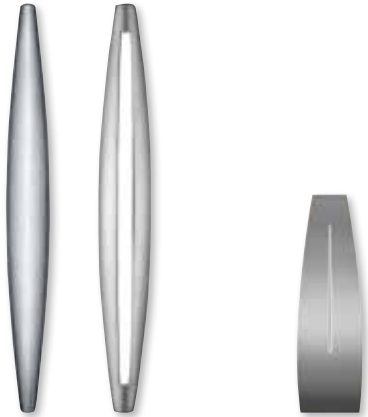


Other Lutron fixture solutions

The Ivalo Collection

The Ivalo Collection provides high design and high quality 95 CRI LEDs that eliminates the guesswork of ensuring 100% compatibility between LED fixtures, drivers, and controls. These architectural fixtures also provide smooth, flicker-free 1% dimming. Ivalo sconces and pendants combine creative vision and progressive technology with quality and advanced design.

LED sconces



Aliante

L'ale

LED pendants



Rotare

lutron.com/ivalo

Finiré LED recessed lighting

3 or 4" round, square, trimmed or trimless downlight, wallwash, and adjustable models deliver up to 2000 lumens. This complete solution combines high-quality 97 CRI Xicato LEDs with a high-performance Lutron Hi-lume LED driver designed to work seamless with Lutron dimmers/controls.



Round trimmed

Square trimmed

lutron.com/finire

Lumaris LED linear lighting

Lumaris offers a small profile LED light bar in various linkable lengths that delivers 95 CRI uninterrupted lines of LED illumination. Its low profile, various lens options (diffused, frosted, clear), and wide light distribution provides flexibility for various applications such as under cabinet, cove, shelf, and step lighting.



lutron.com/lumaris

☼ Lutron, Ivalo, Finiré, Lumaris, Aliante, L'ale, Rotare, Eco-system and Hi-lume are trademarks of Lutron Electronics Co., Inc, registered in the U.S. and other countries.

lutron.com/ivalo

Customer Service and 24/7 Technical Support: 610.282.7472 or fixtures@lutron.com

© 04/2017 Lutron Electronics Co., Inc. | P/N 367-2392 REV G