

## XPS-A-LON-FT-120



Integrates a *Softswitch128* with digital equipment that supports LonWorks® communication.

### Features

- Allows a *LonWorks* system to read status from a *Softswitch128*
- Allows *LonWorks* devices to operate and monitor by controlling individual circuits
- Supports *LonWorks* variables
- Compatible with *Softswitch128* systems

### Specifications

#### Power

- Operating voltage: 120 V $\sim$  50/60 Hz
- Maximum current: 200 mA
- Terminals: Use copper wire only. Wire range #14 - #10 AWG. Supply conductors minimum 75°C

#### Connections

- One (1) Lutron OMX-RS232
- One (1) Fieldbus male jack for FT/10 communication with the *LonWorks* devices

#### Circuit Functions

- Set circuit intensity (500 circuits max)
- Read circuit intensity (500 circuits max)

#### System Communications and Capacity

- One (1) XPS-A-LON-FT-120 Interface per *Softswitch128* system
- System refresh rate is less than 4 minutes

#### Environment

- 0°C to 40°C (32°F to 104°F) operating temperature
- Maximum 90% relative humidity (noncondensing)

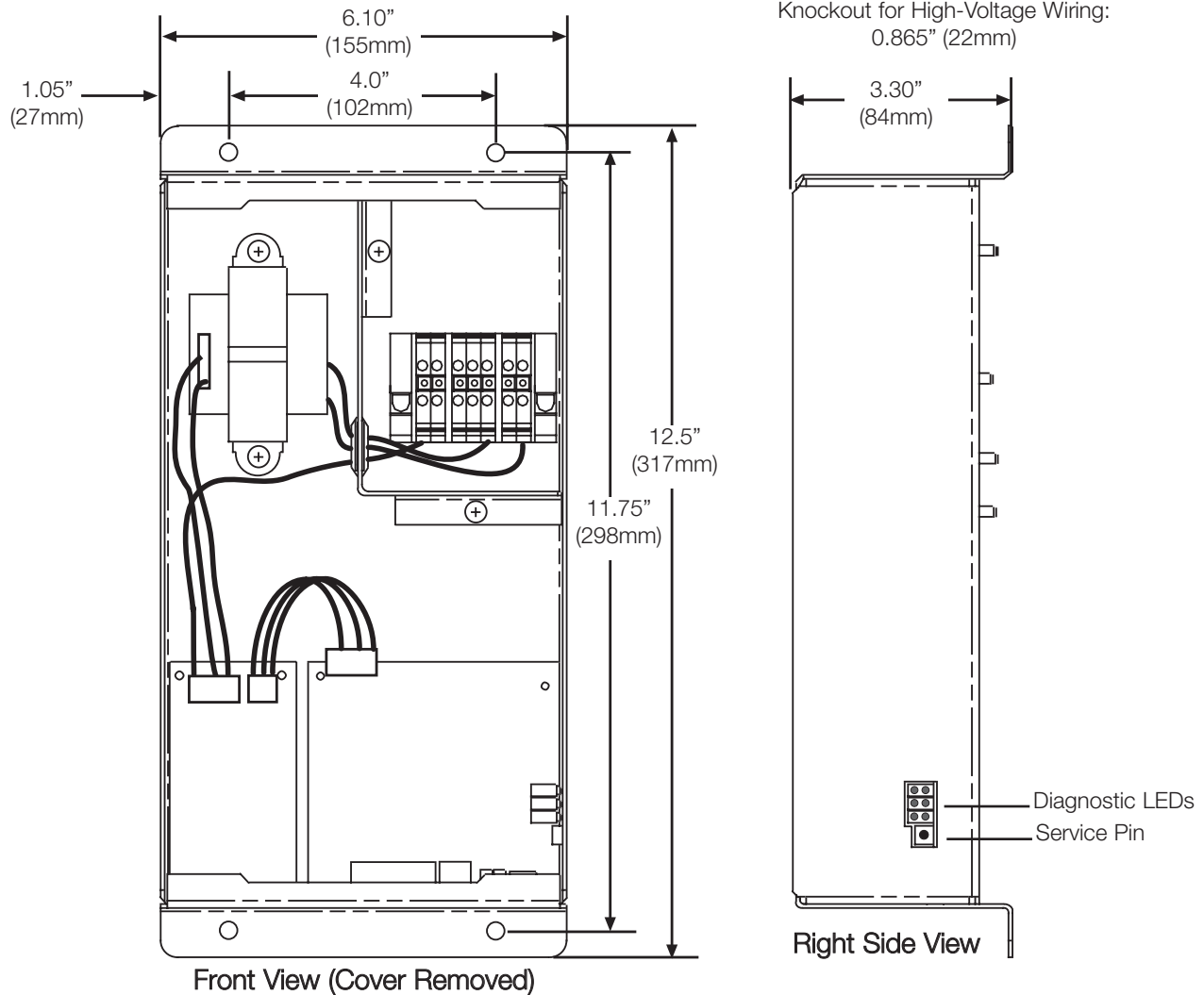
#### Certification

- UL listed under 243C Industrial Control Equipment

<b>Job Name:</b> <input type="text"/>	<b>Model Numbers:</b> XPS-A-LON-FT-120	<input type="text"/>
<b>Job Number:</b> <input type="text"/>	<input type="text"/>	<input type="text"/>

### Dimensions

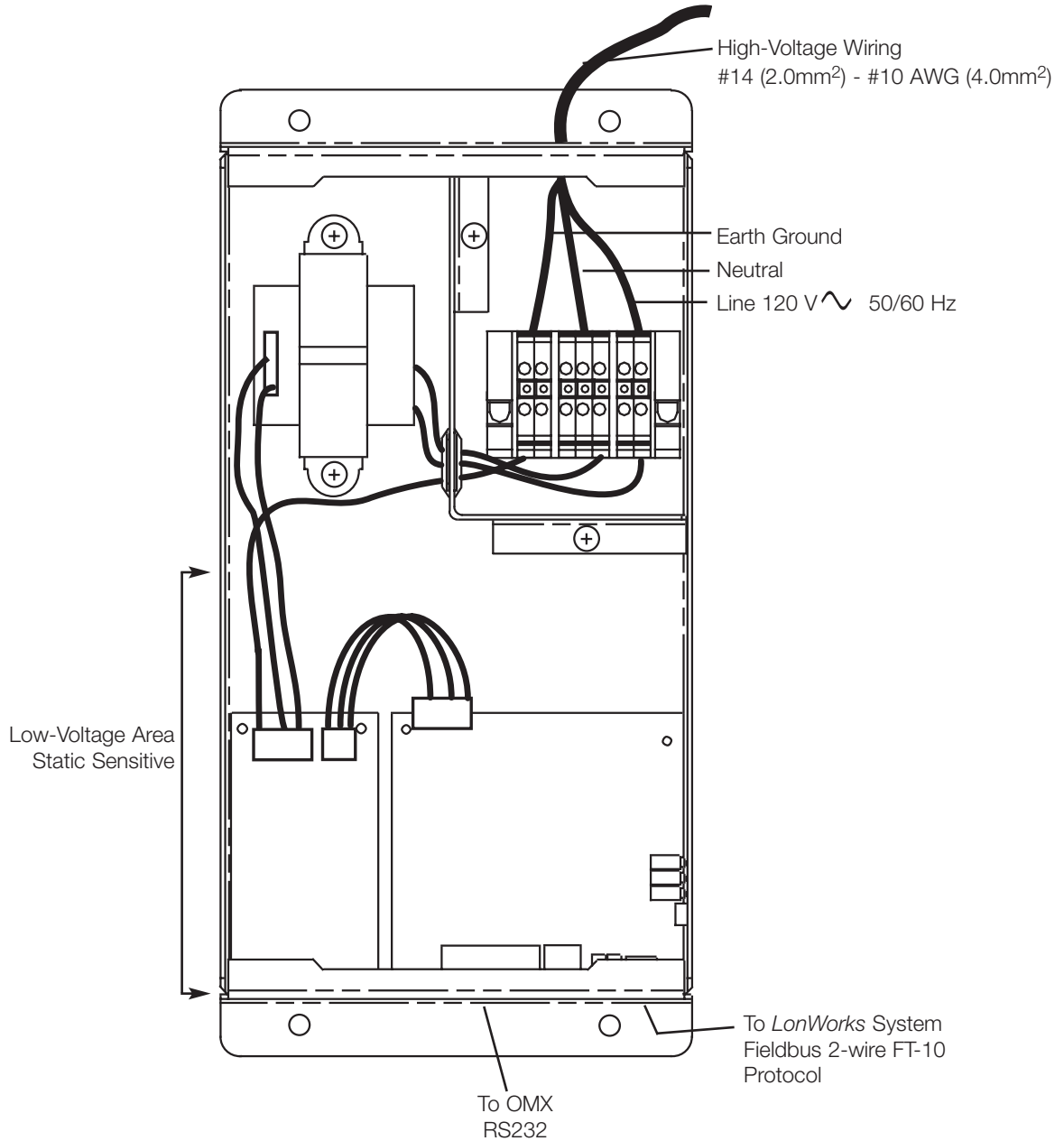
- 6.5 lbs. (2.95 Kg)
- All dimensions are shown in inches and mm
- Leave at least 6" clearance on the bottom and right-hand side of the enclosure to access the plugin ports, the programming button, and the status/operation LEDs.



Job Name:	Model Numbers:	
	XPS-A-LON-FT-120	
Job Number:		

### Wiring

Power should be wired to terminal blocks in the unit through the knockout at the top of the can. Use copper wire only. Wire range #14 - #10 AWG. Supply conductors rated minimum 75°C. Torque terminals to 5 lb. in. (0.7 N-m). **DO NOT TOUCH EXPOSED CIRCUITRY ON LOW-VOLTAGE SIDE.**

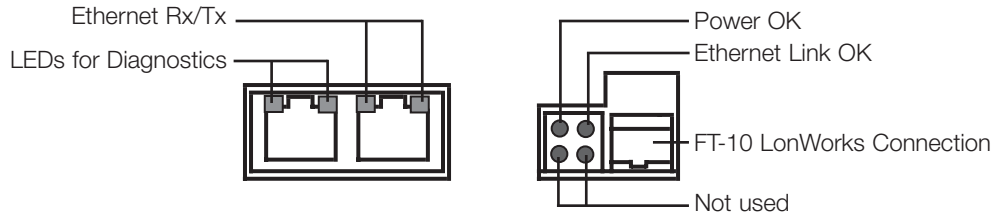


Job Name:	Model Numbers:	
	XPS-A-LON-FT-120	
Job Number:		

## Operation and Status

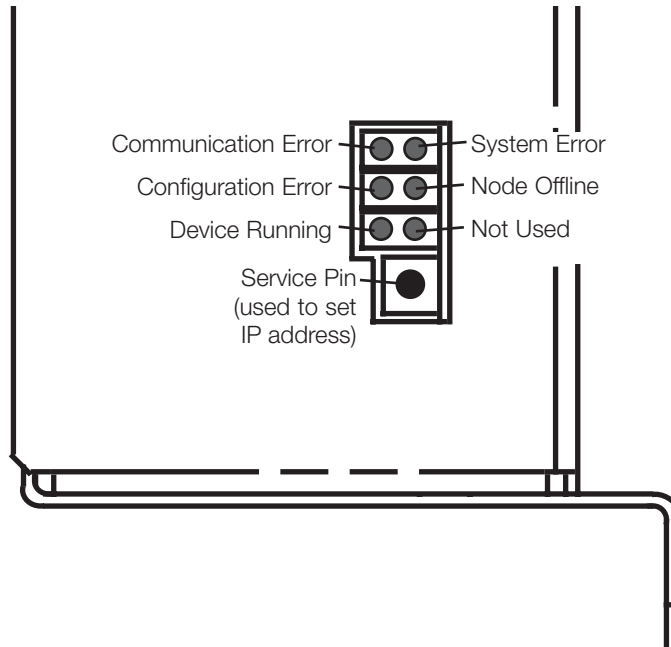
### Power and Communication Status

The device provides power and communication status information using the LEDs visible on the BOTTOM SIDE of the enclosure.



### Functional Status and Service Button

The device provides functional status indication using the LEDs visible on the RIGHT SIDE of the enclosure. The service button is used to set the IP address of the device.



<b>Job Name:</b> <input type="text"/>	<b>Model Numbers:</b> XPS-A-LON-FT-120 <input type="text"/>	<input type="text"/>
<b>Job Number:</b> <input type="text"/>	<input type="text"/>	<input type="text"/>

### LonWorks Variables

Inputs

Set\_Int\_X

Outputs (Status)

Get\_Int\_X

<b>Job Name:</b> <input type="text"/>	<b>Model Numbers:</b> XPS-A-LON-FT-120	<input type="text"/>
<b>Job Number:</b> <input type="text"/>	<input type="text"/>	<input type="text"/>