

## Overview

Using a GP Dimming Panel with a normal/emergency (n/e) feeder requires the following: (see wiring diagram)

1. A UL 1008 listed automatic emergency transfer switch (provided by others) ahead/upstream of the dimmer panel.
2. Power supply that is always hot (for the normal/emergency source).
3. The slide switch on the bottom of the circuit selector on the dimmer panel must be set to emergency mode (far right).
4. The #5 terminal on the Circuit Selector on the n/e dimmer panel must be connected to the #5 terminal of the normal dimmer panel.
5. Normal/emergency 2,3, or 4 wire input service from the n/e service distribution panelboard to the dimmer panel designated for n/e.

Upon loss of normal power, circuits on emergency automatically go to full light output via the full-on electronics in the dimmer panel. Upon restoration of normal power, lights shall return to the level set prior to power operation.

## How To Test

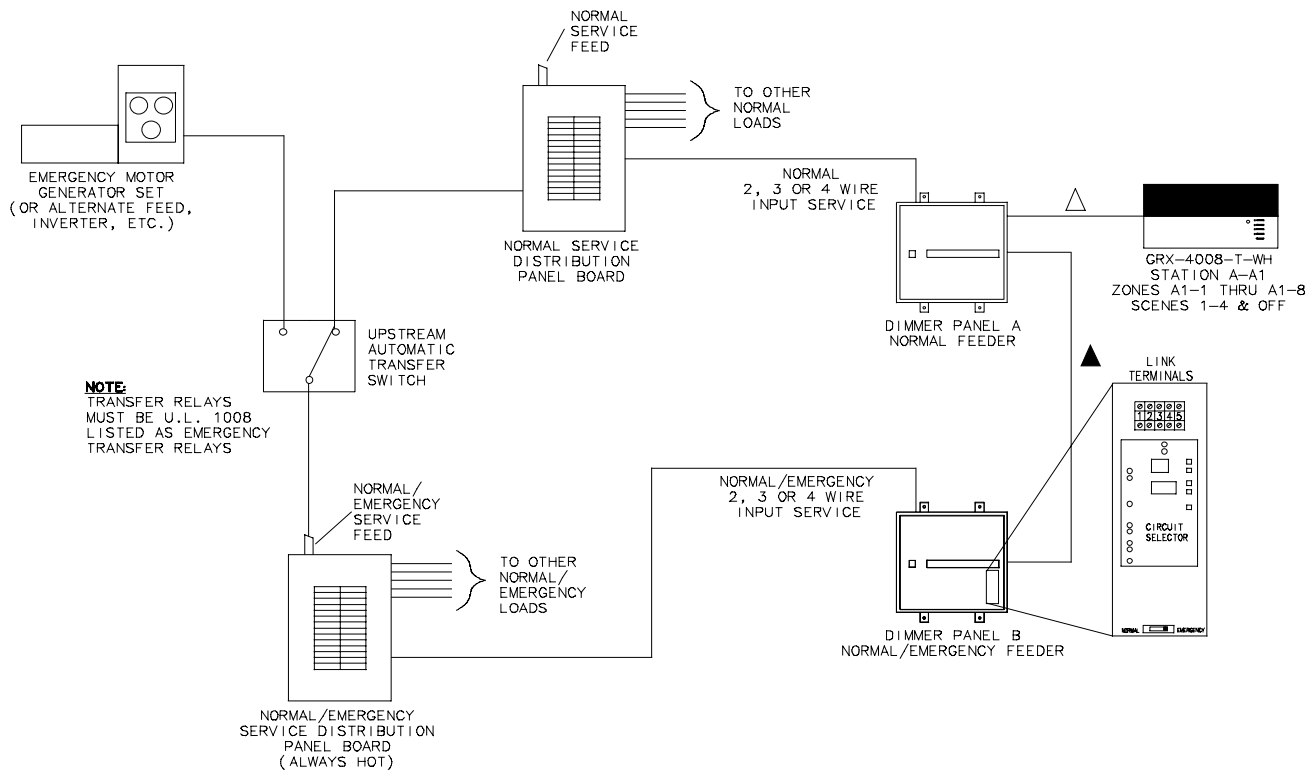
After start-up procedure is complete, turn off control circuit breaker(s) on normal dimmer panel(s). Load circuits on the emergency dimmer panel(s) should go to full light output and the display on the circuit selector should read "ord" for override. Turn control breaker(s) (on normal dimmer panel) back on for normal operation. (Note: load circuits in normal dimmer panel will freeze in intensity until the control breaker is turned back on.)

## How It Works

Circuits in the normal dimmer panel and the emergency dimmer panel must be on the same GRAFIK Eye control link - both the zone intensity and on/off information will be provided during the normal power situation. All dimmers will go to whatever level is set at the control. All load wires will go directly from the dimmer panels (normal and emergency) to the loads. The #5 terminal on the circuit selector in the dimmer panel is a sense line for the emergency panel. When normal power is lost, this sense voltage is lost. Provided the emergency power has been switched to feed the emergency dimmer panel, all emergency circuits will be turned on to full intensity. The loss of the sense line signals the circuit selector to send the full-on signal to the dimmers.

**NOTE:** This type of emergency full-on may be used with either a n/e generator, UPS\* or IPS system with a maximum of 10% THD, or a constant hot secondary utility feed and requires that only a single n/e feeder be furnished to the n/e panels.

\*UPS must furnish a TRUE sinusoidal waveform input to n/e dimmer panel



- ▲ PANEL LINK REQUIRES 3 #18 AWG WIRES PLUS ONE OF THE CABLES LISTED BELOW.
- △ CONTROL LINK REQUIRES 2 #12 AWG WIRES PLUS ONE OF THE CABLES LISTED BELOW.
- TWISTED, SHIELDED, 22 AWG STRANDED (7x30)
- DATA CABLE - BELDEN #9461 OR ALPHA #2211

## Additional Information

### World Headquarters

Lutron Electronics Co., Inc.  
 7200 Suter Road  
 Coopersburg, PA 18036-1299 U.S.A.  
**TOLL FREE:** (800) 523-9466 (U.S.A., Canada, and the Caribbean)  
 Tel: (610) 282-3800; International 1610 282-3800  
 Fax: (610) 282-3090; International 1610 282-3090

### European Headquarters

Lutron EA LTD  
 Lutron House  
 6 Sovereign Close  
 Wapping  
 London, E1 9HW England  
**FREEPHONE:** 0800 282107 (U.K.)  
 Tel: (0171) 702-0657; International 44-171-702-0657  
 Fax: (0171) 480-6899; International 44-171-480-6899

### Hong Kong Office

Tel: 2593-1119; International 852-2593-1119  
 Fax: 2593-1197; International 852-2593-1197

### Singapore Office

Tel: 487-2820; International 65-487-2820  
 Fax: 487-2825; International 65-487-2825

### Japan Office

Lutron Asuka Corporation K.K.  
 Kowa Shibakoen Bldg. 2nd Floor  
 1-1-11 Shibakoen  
 Minato-ku, Tokyo 105-0011, Japan  
**TOLL FREE:** (0120) 083417 (Japan)  
 Tel: International 81 3 5405 7333  
 Fax: International 81 3 5405 7496

### Worldwide Technical and Sales Assistance

If you need technical assistance, call the toll-free **Lutron Technical Assistance Hotline**. Please provide exact model number when calling. (800) 523-9466 (U.S.A., Canada and the Caribbean) Other countries call:  
 Tel: (610) 282-3800; International: 1 610 282-3800  
 Fax: (610) 282-3090; International: 1 610 282-1243  
 Our address on the Web is [www.lutron.com](http://www.lutron.com)

Lutron and GRAFIK Eye are registered trademarks of Lutron Electronics Co., Inc.