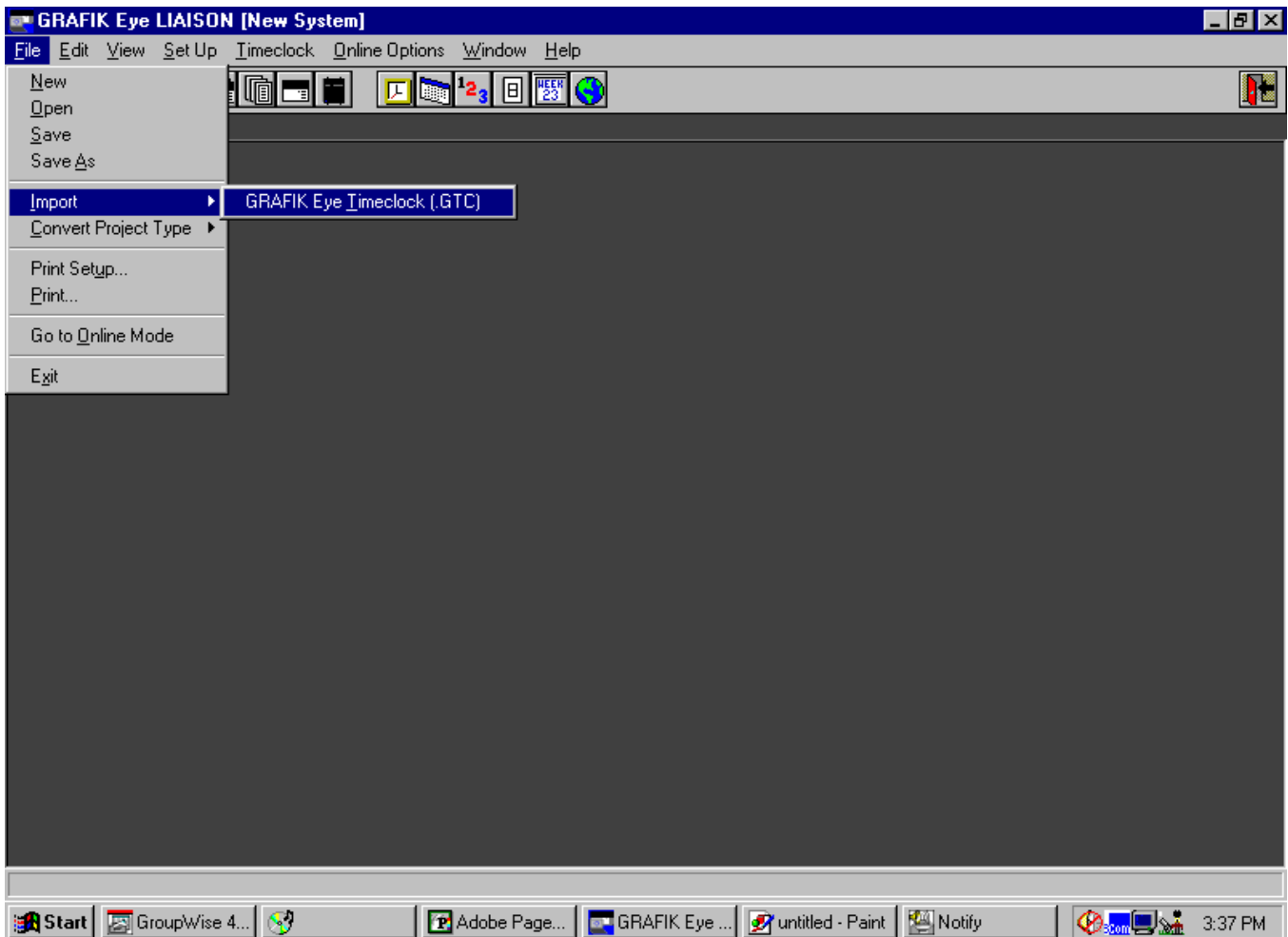


Overview

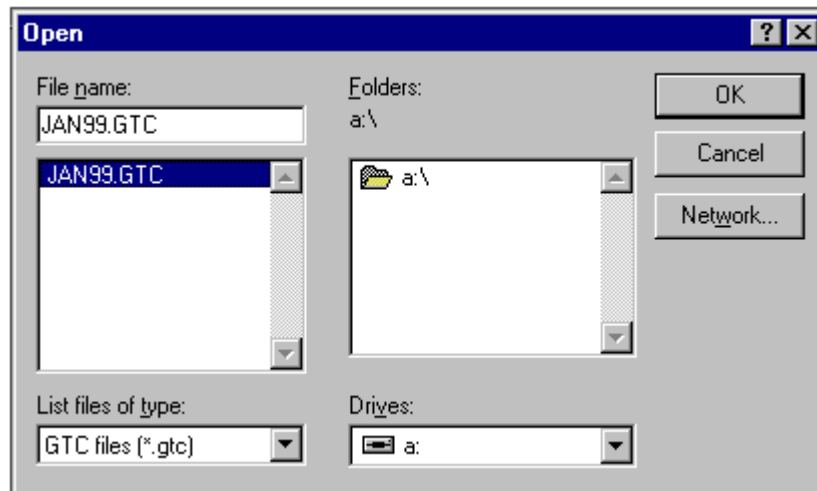
With the obsolescence of the GRX-ATC and its software, GRXTC-WIN, it may be necessary to import files created with the Timeclock Software into LIAISON 2.1 for use. To do this, follow the steps outlined in this document.

Procedure

1. Start LIAISON and go into *Create or Edit a Project from File*.
2. Under *File* select *Import* and then *GRAFIK Eye Timeclock (.GTC)*.



3. Open desired Timeclock File.

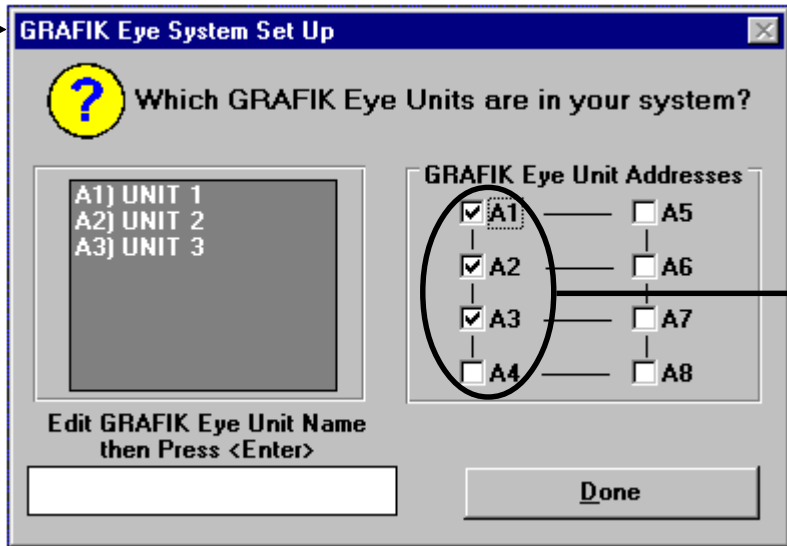


4. Once the Timeclock file is imported into LIAISON, you will notice that the Control Units will have defaulted to GRX-3104 Control Units. Control Unit model numbers were not specified in the GRAFIK Eye Timeclock Software, since only Addresses needed to be known. Therefore, when using the Timeclock function only, Control Unit model numbers do not need to be altered. If it is necessary to change the Control Unit model numbers, refer to Step 5.

Model	Address	Description
GRX-3104	1	UNIT 1
GRX-3104	2	UNIT 2
GRX-3104	3	UNIT 3
Not Used	4	Control Unit 4
Not Used	5	Control Unit 5
Not Used	6	Control Unit 6
Not Used	7	Control Unit 7
Not Used	8	Control Unit 8

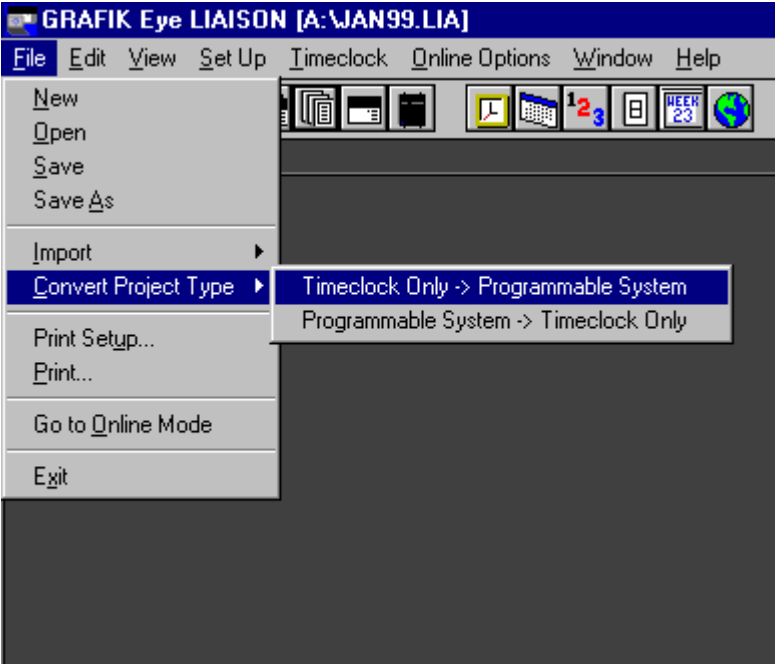
NOTE: 4000 Control Units with 16 and 24 Zones take two and three Addresses respectively. These Control Units would have been entered in the Timeclock Software as if they were separate Units (i.e. a 4116 would be entered as two Units with Addresses A1 & A2). When importing a Timeclock File with these multi-addressed Control Units into LIAISON, the Control Unit Schedule will display separate Units. This must be edited within LIAISON to reflect the use of a 16 or 24 Zone Control Unit.

Timeclock Software
(FOR REFERENCE)

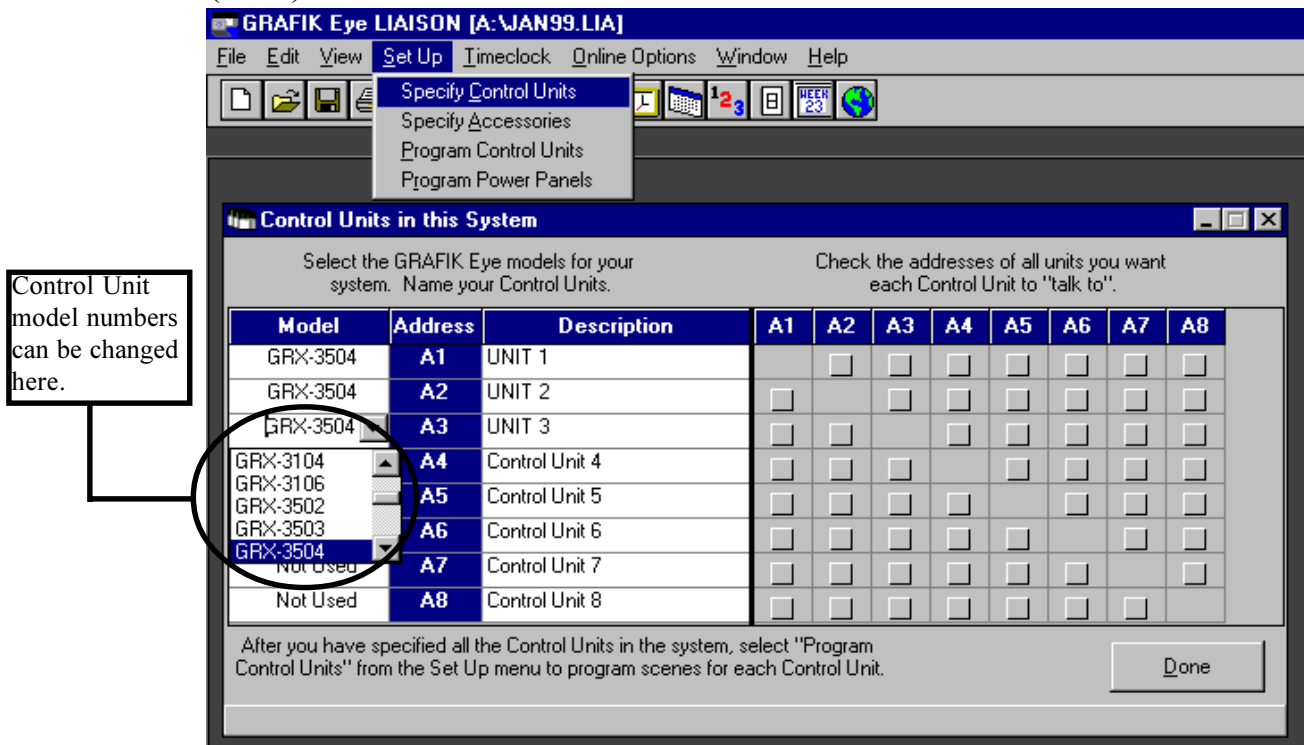


Only Control Unit
Addresses needed to
be specified (i.e. no
zone information was
requested in the
Timeclock Software).

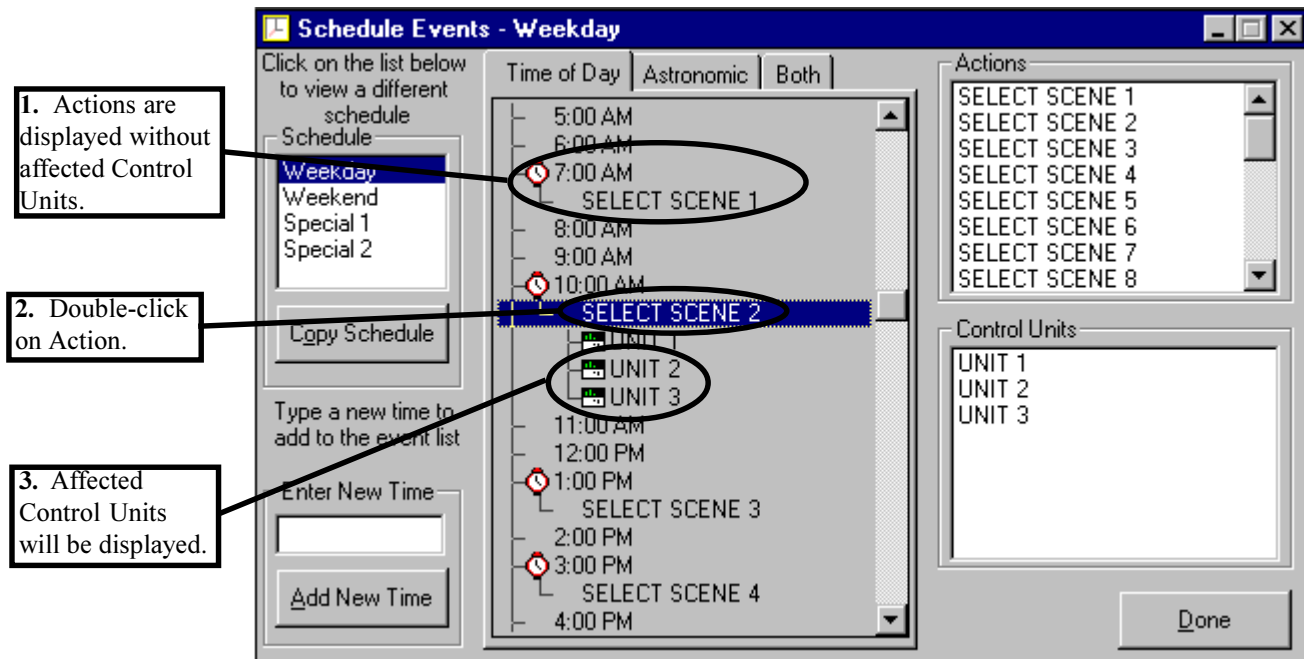
5. Once you have imported the Timeclock File, if you then decide to upgrade the entire GRAFIK Eye System to use LIAISON, the imported Timeclock File can then be converted to a Programmable System File. Additionally, if you want to change the model numbers of the Control Units used in the system from their default values, you must convert the Timeclock File (.GTC) to a Programmable System (LIAISON) File.



6. Once the Timeclock File is converted to a Programmable System File, changes may be made to the Control Unit model numbers. At this point, the file must be saved as a LIAISON File (.LIA).



7. When initially viewing *Schedules* (under *Timeclock*) in LIAISON for a file that has imported from the Timeclock Software, the icons for which Control Units the Actions are taking place on are not displayed. In order to view the icons, double-click the Action and the appropriate Control Units will be displayed.



Additional Information

World Headquarters

Lutron Electronics Co., Inc.
7200 Suter Road
Coopersburg, PA 18036-1299 U.S.A.
TOLL FREE: (800) 523-9466 (U.S.A., Canada, and
the Caribbean)
Tel: (610) 282-3800; International 1610 282-3800
Fax: (610) 282-3090; International 1610 282-3090

European Headquarters

Lutron EA LTD
Lutron House
6 Sovereign Close
Wapping
London, E1 9HW England
FREEPHONE: 0800 282107 (U.K.)
Tel: (0171) 702-0657; International 44-171-702-0657
Fax: (0171) 480-6899; International 44-171-480-6899

Hong Kong Office

Tel: 2593-1119; International 852-2593-1119
Fax: 2593-1197; International 852-2593-1197

Singapore Office

Tel: 487-2820; International 65-487-2820
Fax: 487-2825; International 65-487-2825

Japan Office

Lutron Asuka Corporation K.K.
Kowa Shibakoen Bldg. 2nd Floor
1-1-11 Shibakoen
Minato-ku, Tokyo 105-0011, Japan
TOLL FREE: (0120) 083417 (Japan)
Tel: International 81 3 5405 7333
Fax: International 81 3 5405 7496

Worldwide Technical and Sales Assistance

If you need technical assistance, call the toll-free **Lutron Technical Assistance Hotline**. Please provide exact model number when calling. (800) 523-9466 (U.S.A., Canada and the Caribbean)
Other countries call:
Tel: (610) 282-3800; International: 1 610 282-3800
Fax: (610) 282-3090; International: 1 610 282-1243
Our address on the Web is www.lutron.com

Lutron and GRAFIK Eye are registered trademarks of Lutron Electronics Co., Inc.