

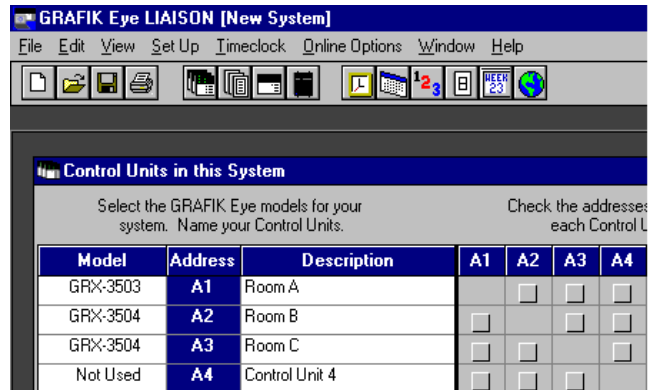
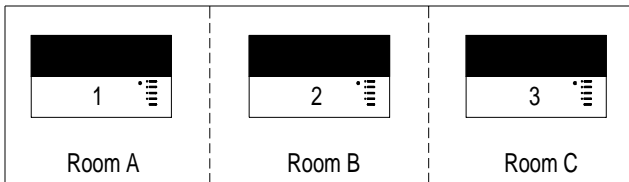
Overview

Use GRAFIK Eye LIAISON to create individual files for a space when partitions are either opened or closed. Create a file with scenes specific to the status of the partition and download via the interface device, GRX-PRG.

Individual Files

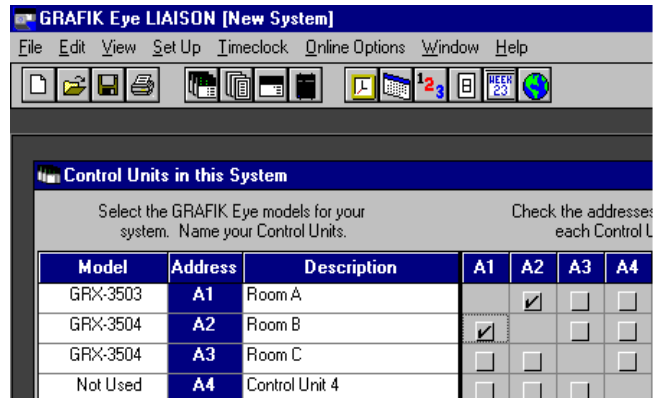
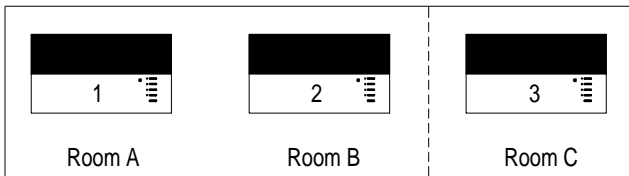
File 1

ALL PARTITIONS CLOSED
Each Control Unit acts independently.



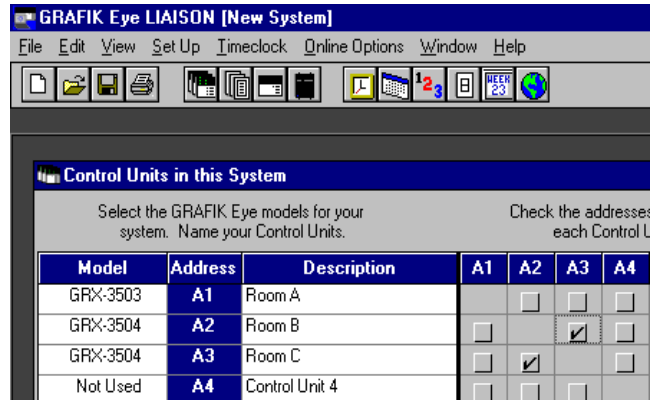
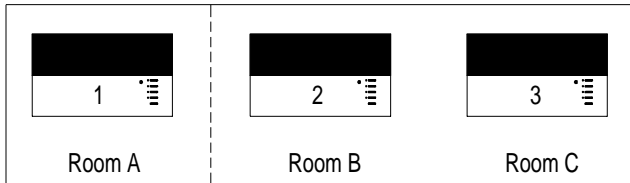
File 2

PARTITION BETWEEN A&B OPEN,
BETWEEN B&C CLOSED
Control Units 1&2 operate in unison.



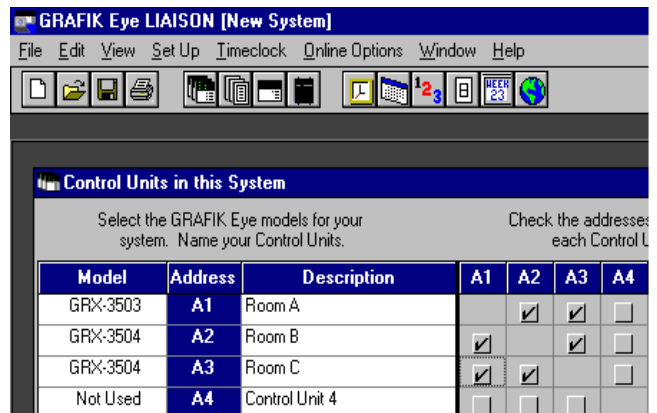
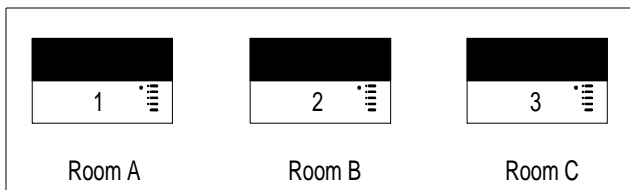
File 3

PARTITION BETWEEN B&C OPEN,
BETWEEN A&B CLOSED
Control Units 2&3 operate in unison.



File 4

ALL PARTITIONS OPEN
All Control Units operate in unison.



NOTE: New scenes can be created based on room configurations. Wall wash zones focused on partitions can become "downlights" or turned off when partitions are removed. Additionally, GRAFIK Eye Control Units could be electronically locked out (i.e., when all partitions are open, Control Units 2 and 3 could be set up in "4S" mode to allow only scene activation from those Control Units).

Additional Information

World Headquarters

Lutron Electronics Co., Inc.
7200 Suter Road
Coopersburg, PA 18036-1299 U.S.A.
TOLL FREE: (800) 523-9466 (U.S.A., Canada, and
the Caribbean)
Tel: (610) 282-3800; International 1610 282-3800
Fax: (610) 282-3090; International 1610 282-3090

European Headquarters

Lutron EA LTD
Lutron House
6 Sovereign Close
Wapping
London, E1 9HW England
FREEPHONE: 0800 282107 (U.K.)
Tel: (0171) 702-0657; International 44-171-702-0657
Fax: (0171) 480-6899; International 44-171-480-6899

Hong Kong Office

Tel: 2593-1119; International 852-2593-1119
Fax: 2593-1197; International 852-2593-1197

Singapore Office

Tel: 487-2820; International 65-487-2820
Fax: 487-2825; International 65-487-2825

Japan Office

Lutron Asuka Corporation K.K.
Kowa Shibakoen Bldg. 2nd Floor
1-1-11 Shibakoen
Minato-ku, Tokyo 105-0011, Japan
TOLL FREE: (0120) 083417 (Japan)
Tel: International 81 3 5405 7333
Fax: International 81 3 5405 7496

Worldwide Technical and Sales Assistance

If you need technical assistance, call the toll-free **Lutron Technical Assistance Hotline**. Please provide exact model number when calling. (800) 523-9466 (U.S.A., Canada and the Caribbean)
Other countries call:
Tel: (610) 282-3800; International: 1 610 282-3800
Fax: (610) 282-3090; International: 1 610 282-1243
Our address on the Web is www.lutron.com

Lutron and GRAFIK Eye are registered trademarks of Lutron Electronics Co., Inc.