

Green Glance™ and Energy Reporting Software

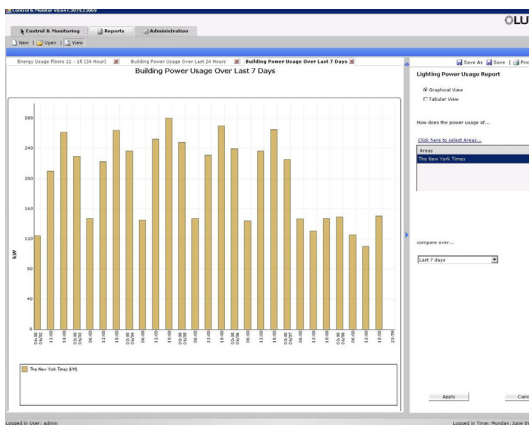
The *Green Glance* and Energy Reporting software license adds the following energy management features to your *Quantum* system.

- Logging of calculated energy usage for system loads
- Custom reporting on energy usage using the Q-Admin™ software
- IntelliDemand load shed control for system loads
- Server for Lutron's *Green Glance* lighting energy savings display

Energy Data Logging

An energy calculation and logging software package will be installed on your *Quantum* Q-Manager™ server.

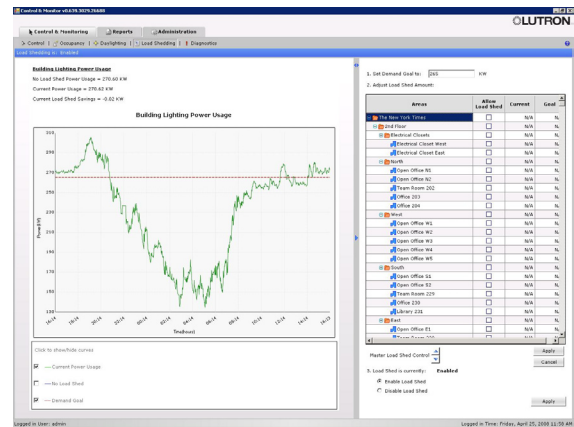
Custom Reporting



Energy reports allow the building manager to gather historical information about the buildings energy and power usage.

- Energy Reports: Show a comparison of cumulative energy used over a period of time for one or more building areas.
- Power Reports: Show power usage trends over a period of time for one or more building areas.

IntelliDemand



IntelliDemand allows the building manager to monitor whole-building lighting power usage and apply a load shed reduction to selected areas, thereby reducing a building's power usage.

- Displays real-time building power usage for the current day
- Shed lighting load in the entire building, or in selected areas

Job Name:

Model Numbers:

Job Number:

Green Glance™ software allows real-time and historical Lutron lighting energy data to be displayed on an LCD display or a computer terminal.

The screen displays lighting energy savings, and equivalent savings expressed in terms of coal not burned or CO₂ not emitted. Data are organized into a graphical format intended for public viewing.

The computer display allows the user to select the time period to be displayed for historical data. The LCD display will display predefined views from user-selected configurations.

Real-Time Energy Savings

Green Glance compares the full-on state of lighting loads to the real-time levels continuously reported by the system. The comparison is displayed in a graph form showing the percentage of instantaneous power saved.

Historical Time Periods:

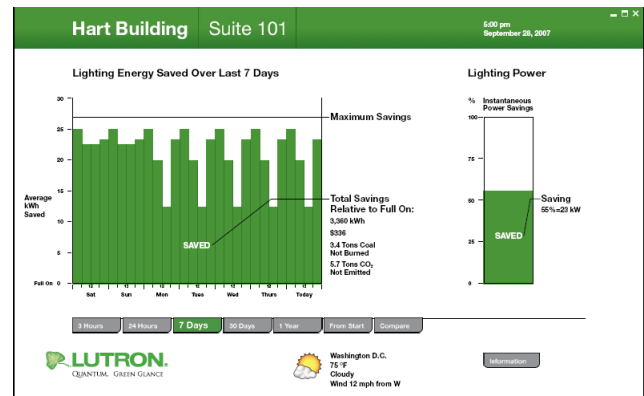
- 3 hour energy savings
- 1 day energy savings
- 1 week energy savings
- 1 month energy savings
- 1 year energy savings
- Compare historical periods (days, weeks, months, years)

Energy Savings Over Time Period Displayed in:

- kWh saved
- Dollars saved
- CO₂ not emitted
- Coal not burned

Other Data Displayed

- Local weather conditions (Internet connection required)
- Project information



Information Displayed in U.S. Format:

- Language: English
- U.S. currency
- U.S. time and date format

Required

- *Quantum* light management system
- Lutron Q-Manager™ server
- *Green Glance* client PC (model #QSW-GG-PP-A)
For customer-supplied PC, PC must meet minimum specification of model #QS-A-CMP-D-O.
- User-supplied *Green Glance* display (TV/monitor)

Licences Required

- One license per processor

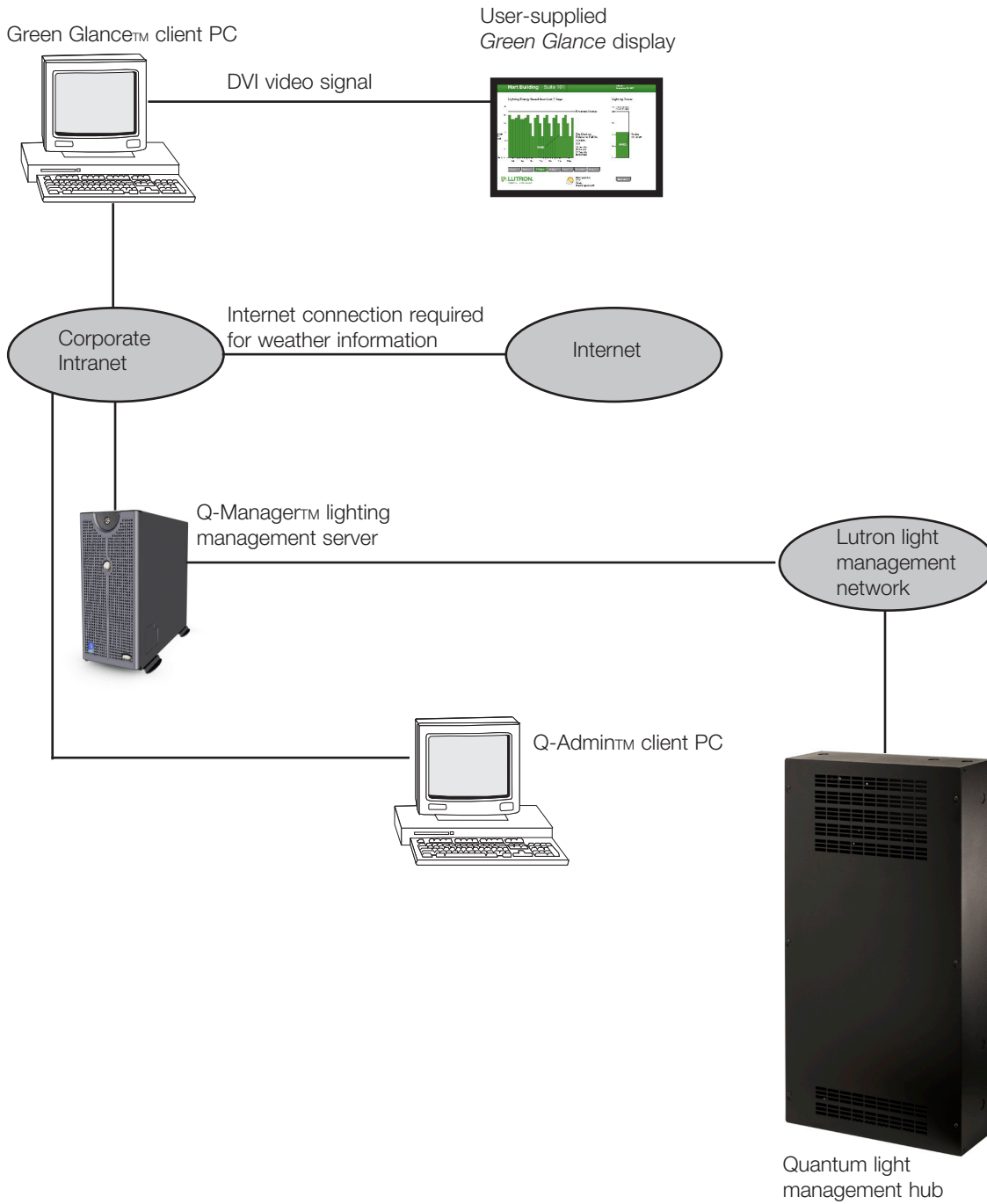
Notes

- Maximum 6 concurrent *Green Glance* displays.

Job Name:

Model Numbers:

Job Number:



Job Name:	Model Numbers:
Job Number:	