

## Q-Admin™ Software / Quantum™ Processor Software: Light Control and Monitoring

### Description

*Q-Admin* is *Quantum's* software that allows facilities staff to manage their electric light and daylight for maximum energy efficiency, comfort, and productivity.

### Control and Monitoring

#### Basic System View

The *Q-Admin* system navigation and status reporting is performed using a tree view of the building.

#### Optional Graphical Floorplan View

The *Q-Admin* system navigation and status reporting is performed using customized CAD-based drawings of your building. Pan and zoom features allow for easy navigation. Basic system view is always available. Contact Lutron for custom pricing.

#### Control of Lights

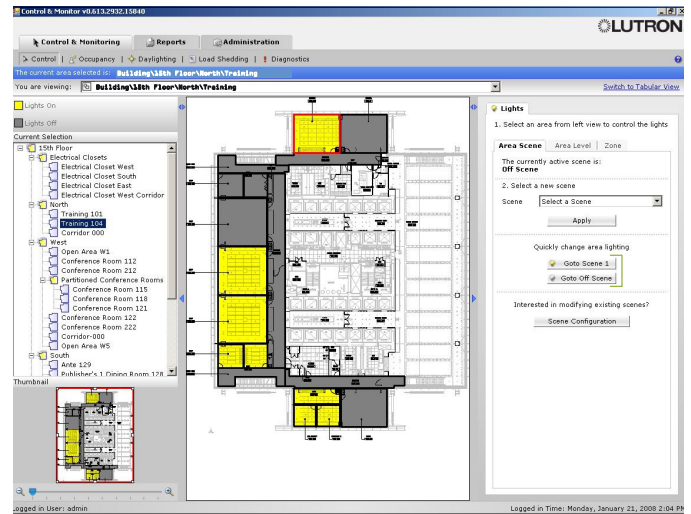
Allows the building manager to control and monitor the lighting system as follows:

- Area lights can be monitored for on/off status.
- All lights in an area can be turned on/off or sent to a specific level.
- Areas that have been zoned may be sent to a predefined lighting scene, and individual zones may be controlled.
- Area lighting scenes can be modified in real time, changing the levels that zones go to when a scene is activated.

#### Occupancy

Occupancy allows the building manager (or security guard) to monitor occupancy status and make occupancy setting changes as follows:

- Area occupancy can be monitored.
- Area occupancy can be disabled to override occupancy control or in case of occupant sensor problems.
- Area occupancy settings (including the level the lights turn on to when area is occupied, and off to when area is unoccupied) can be changed in real time.



#### Daylighting

Daylighting allows the building manager to control and monitor the daylighting settings as follows:

- Daylighting can be enabled/disabled for each daylight area.
- Daylight target levels can be changed for each daylight area. This is particularly useful when new departments move into a space.

#### IntelliDemand

IntelliDemand allows the building manager to monitor whole-building lighting power usage and apply a load shed reduction to selected areas, thereby reducing a building's power usage.

#### Scheduling

Schedule time of day and astronomic timeclock events to automate functions for lights.

**Job Name:**

**Model Numbers:**

**Job Number:**

**Reporting**

Reports allow the building manager to gather real-time and historical information about the system as follows:

- **Activity Report:** Shows what activity has taken place over a period of time for one or more areas. Activity includes occupant activities (i.e., areas going occupied/unoccupied, wall controls being pressed), building manager operation (controlling/changing areas using the control and monitor tool), and device failures (keypads, ballasts, etc., that are not responding).
- **Lamp Failure Report:** Shows which areas are currently reporting lamp failures.

**Diagnostics**

Diagnostics allows the building manager to check on the status of all equipment in the light control system. Devices will be listed with a reporting status of OK, Missing, or Unknown.

**Administration**

The administration tab appears only for users who have been assigned the role of “Admin” when their user account was created or last modified. The administration features are as follows:

- **Users:** Allows new user accounts to be created, and existing user accounts to be edited.
- **Publish Graphical Floorplan:** Allows “Admin” user to publish new graphical floorplan files.

- **Back-Up Project Database:** Allows “Admin” user to back up the project database. The project database holds all the configuration information for the system, including keypad programming, area scenes, daylighting, occupancy programming, emergency levels, night lights, and timeclock. The Control and Monitor tool can be used to adjust some of these settings, and thus it is important to back up the project database prior to changing settings.
- **Publish Project Database:** Allows the “Admin” user to send a new project database to the server and download the new configuration to the system. The project database holds all the configuration information for the system, including keypad programming, area scenes, daylighting, occupancy programming, emergency levels, night lights, and timeclock.

**Required Hardware**

- Lutron Q-Manager™ server (if running *Q-Admin* software)
- Lutron *Quantum* light management hub

**Optional Hardware**

- Lutron *Q-Admin* client PC
- Lutron Green Glance™ client PC and Green Glance™ software license

**Licences Required**

- One license per processor

<b>Job Name:</b>	<b>Model Numbers:</b>
<b>Job Number:</b>	