

GRAFIK Eye® Designer

GRAFIK Eye Designer is a utility that specifies Lutron dimming and switching equipment. Users are able to create flexible systems without possessing expert knowledge of Lutron dimming products.

Features:

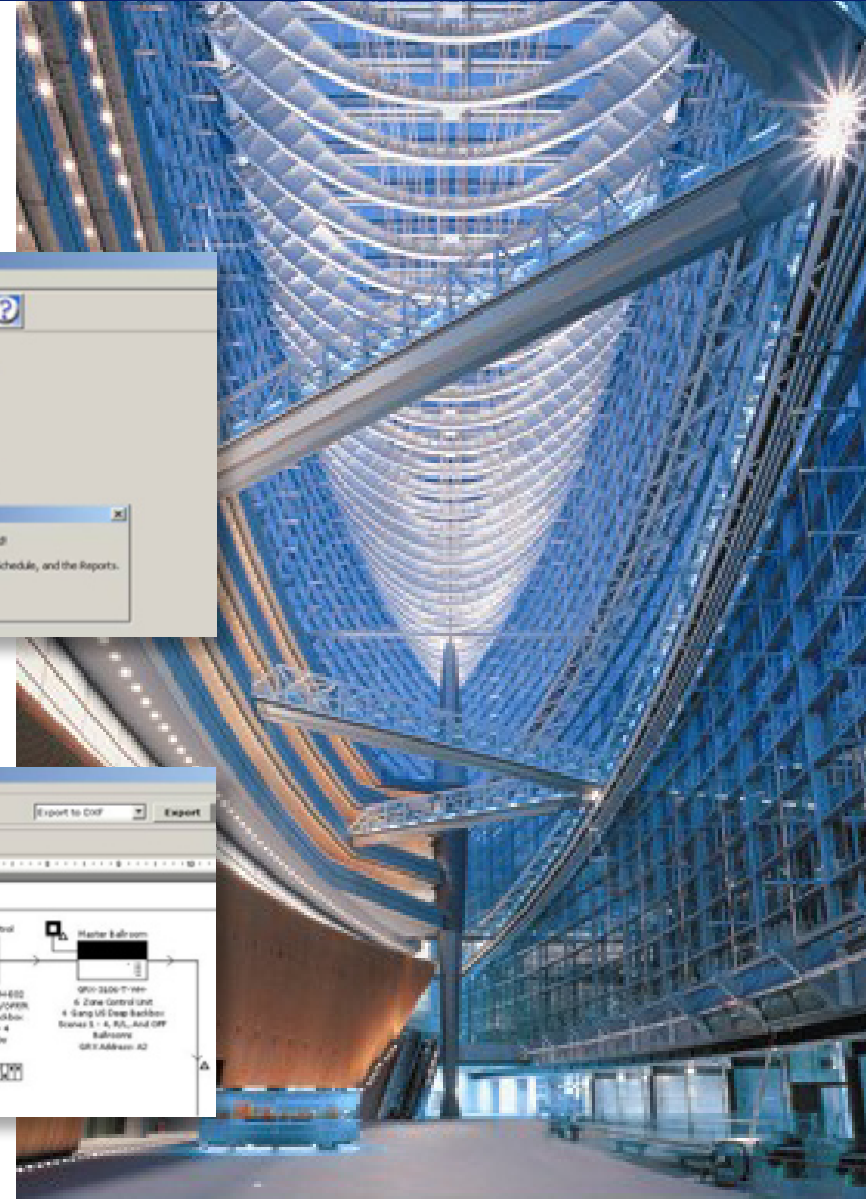
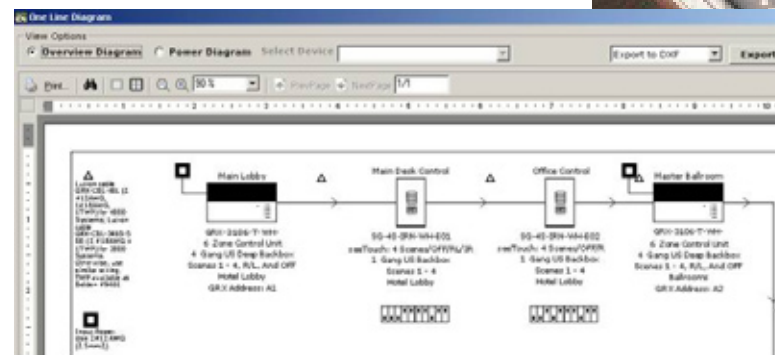
- Import of Load Schedule from Excel
- Import of Fixture Libraries from Excel
- Flexible System Layout & Specification
- Ability to generate...
 - Bill Of Materials
 - Fixture Schedule Report
 - Equipment Report
 - Room-based Load Schedule Report
 - Panel-based Load Schedule Report
 - One-Line Diagrams
- Export of One-Lines and Reports to
 - AutoCad (.DXF)
 - Microsoft Excel (.XLS)
 - Adobe Acrobat (.PDF)

Technical Assistance

Tel: 1.800.523.9466

Email: designer@lutron.com

To obtain the Designer software on CD, please contact your Lutron sales office or call 1.800.LUTRON1



GRAFIK Eye® Designer

The following items were fixed/implemented in version 7.1.124.

General

- The new PHPM interfaces are now available in 120V and 277V.
- Multiple LCP Equipment Rooms
- Change the phase wiring mid project
- All shade loads can now be specified from the Load Schedule
- New line of CES Photosensors for LCP128® and SoftSwitch128®
- Branch Circuits has a new designation on the One-line Diagrams
- Enter Boost Compensation as Power Factor

The following new products are available for Designer...

- GRX-CI-PRG GRAFIK Eye programming interface
 - GRX-IO GRAFIK Eye contact closure interface
 - OMX-IO LCP128 and SoftSwitch128 contact closure interface
 - LUT-5x10-ENC enclosure for the CI interfaces
 - SO-4NRL 4-button keypads without Raise/Lower for LCP128 and SoftSwitch128
-

The following items were fixed/implemented in version 7.0.121.

General

- 4A (Adaptive) modules added to LCP128
- Support for write-in/custom Bill of Material items
- Project ID/Number can be entered in the project settings and appear on all reports
- Room summary load schedule report improved for LCP128 and Softswitch128
- Added Eco-10 ballasts as a separate load type

The following new products are available for Designer...

- SoftSwitch128 Link Expander added to support three links of 32 keypads for a total of 96 keypads in one system
- LUT-ELI-3PH available in all systems
- GRX-IRI Infrared Interface
- LOS-CIR-450-WH and LOS-CIR-1500-WH occupancy sensors

GRAFIK Eye® Designer

The following items were fixed/implemented in version 6.9.119.

General

- Feed Type Correction - The panel feed types now appear correctly on the oneline diagrams. The feed type options are Normal, Emergency, or Normal/Emergency.
-

The following items were fixed/implemented in version 6.8.118.

General

- Rearrange Oneline Diagrams - The order of controls on the online line diagrams for GRAFIK Eye, LCP128 and SoftSwitch128 projects can be changed.
- 2000W Dimming for 120V/20A - When using 120 Volt, 20 Amp circuits, the maximum dimming load is 2000W. This is now supported throughout Designer. Note: this rating applies to products rated in Watts such as GRAFIK Eye's, GP Panels, SpecGrade LCP128 Panels, and 4U Modules.
- Export BOM with Quantities - Now when exporting the model numbers (BOM), the quantities are also exported.
- LOS Occupancy Sensors Oneline Diagrams Updated - The oneline diagrams showing LOS sensors have been updated to show the LOS series.

The following new products are available for Designer...

- SoftSwitch128 projects with 512 zones / 16 panels
 - New Fluorescent PWM and Fluorescent Phase Control loads added for 100 Volt projects.
-

The following items were fixed/implemented in version 6.7.113.

Additional Systems

- SpecGrade LCP128 - available for the following voltages: 120, 277

General

- Improved optimization of LCP128 panels.
- LCP128 panels can be specified as Normal, Emergency, or Normal/Emergency.

GRAFIK Eye® Designer

The following items were fixed/implemented in version 6.6.112.

Additional Systems

- LCP128 - available for the following voltages: 120, 230, 220-240
- SoftSwitch - available for the following voltages: 230, 347, Dual voltage
- RadioTouch - available for 347 volt projects

The following new products are available for Designer...

- LOS Occupancy Sensors (NOTE: MOS Sensors are obsolete and are no longer available)
- GRX-CI-NWK-E and OMX-CI-NWK-E - Ethernet Interfaces
- GRX-4M-GC-CE - Available for 230 volt and 220-240 volt projects
- GRX-CI-RS232 and OMX-CI-RS232 - RS232 Interfaces

The following items were fixed/implemented in version 6.5.105.

General

- A “Check For Upgrades” button was added to the main screen that when clicked will check the web for Designer upgrades.
- Products for Japan including JDP panels (100 volt projects) can now be created.

Language

- Designer is available in 16 languages. The user interface and all reports now support Portuguese, Brazilian Portuguese, Russian, Traditional Chinese, and Japanese.

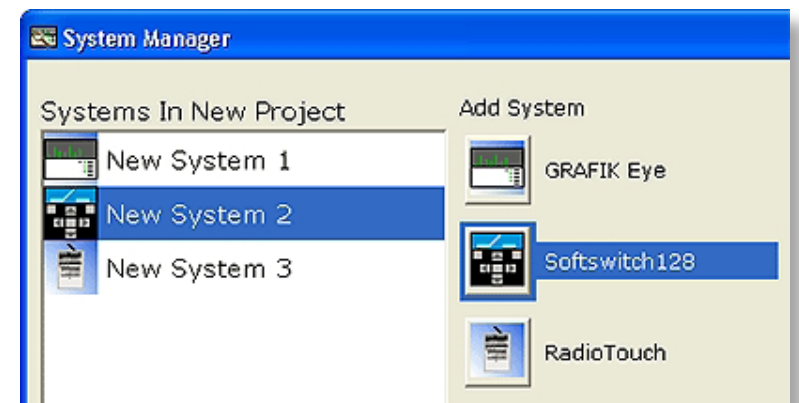
Systems Manager

- This new screen allows you organize independent systems in the same project file and you can quickly create a project with easy-to-use system design wizards.

Additional Systems

- Softswitch128 - available for the following voltages: 120, 277, 220-240
- RadioTouch - available for 120 volt projects
- Bang & Olufsen controls - available for the following voltages: 120, 230

(continued...)



GRAFIK Eye® Designer

Window Shade Controls

- Sivoia QED - available for the following voltages: 120, 277
 - Group Controller - available for the following voltages: 120, 220-240, 230
 - Contact Closure Output (CCO) devices
-

The following items were fixed/implemented in version 6.0.96.

General

- Reports have internationally aware date formatting.

Language

- All reports can be viewed and printed in Simplified Chinese.
- The user interface also supports Simplified Chinese.

The following new products are supported in Designer...

- Products for all voltages:
 - GRX-IRPS - Ceiling mounted partition switch (requires GRX-AV)
 - GRX-WCI - Wall Control Interface which allows non-Lutron switches to interface with Lutron system
-

The following items were fixed/implemented in version 5.5.70.

General

- New Load Types - Fluorescent DSI; Fluorescent DALI; Lutron ELV Transformer

Project Information & Settings

- International Project Voltage Options - Includes 230 volt CE and 220-240 volt AU products

Language

- Multi-Lingual Reports - Allows reports to be viewed and printed in several languages
- Multi-Lingual User Interface - Frees users from needing to understand American English

(continued...)

GRAFIK Eye® Designer

The following new products are supported in Designer...

230 volt CE products:

- GRAFIK Eye control units
- GRAFIK Integrale control units
- Power interfaces (NGRX-PB-CE-WH, NGRX-ELVI-CE-WH, GRX-TVI-CE)
- CCP Dimming Panels with optional TVM
- CXP Switching Panels with optional TVM

220-240 volt AU products:

- GRAFIK Eye control units:
- GRAFIK Integrale control units
- Power interfaces (NGRX-PB-AU-WH, NGRX-FDBI-AU-WH, NGRX-ELVI-AU-WH)
- GP Dimming Panels with optional TVM
- LP Dimming Panels with optional TVM
- XP Switching Panels

120 volt products:

- Photo Sensor
- GP Dimming Panels with TVM

The following items were fixed/implemented in version 5.1.41.

General

- A Load Schedule can now be copied and pasted into an existing room or a new room.

Reports

- All Reports can now be exported to the DXF Format
- User can now choose whether or not she/he wants to include the Lutron footer on the OneLine Diagram DXF export.

(continued...)

GRAFIK Eye[®] Designer

Project Information & Settings

- Project Information & Settings can now be saved globally for re-use from project-to-project.

Quick Build Wizard

- A brand new screen can be brought up that asks users to enter an overall number of Zones and Circuits. Based on this minimal input, a rough-draft specification is performed with the click of a button.

Import Wizard

- This new wizard guides the user through the necessary steps to import load schedule and fixture schedule data from a Microsoft Excel spreadsheet.

Print / Export Screen

- This new screen allows the user to print and/or export one, many or all the reports from a project file.

Equipment Schedule

- The engraving text for a given engraving option is now displayed on the equipment schedule.

Specify Preferences

- Specify Preferences can now be saved globally from project-to-project.

The following items were fixed/implemented in version 5.0.32.

General

- Fixed a Save issue which would cause databases to be corrupt.
- Improved the overall aesthetics of the program.

GRAFIK Eye® Designer

The following items were fixed/implemented in 5.0.31.

General

- 800 x 600 Support
- Re-grouping of rooms on the tree no longer require holding the “Ctrl” key
- Better descriptions for HP vs PB
- Changing of “3-Wire” to “Hi-Lume/Eco 10”
- Changing of “TVI” to “Relay by Lutron (GRX-TVI)”

Reports

- Printing-related bugs from the reports have been fixed
- PDF Export for all Reports and One Line diagrams has been implemented
- Phasing of XP Panel circuits on the Panel Load Schedules has been fixed
- Fixture Schedule Reports have been added

Load Schedule

- Several bugs while dealing with Zone-based Load Schedule have been fixed
- A bug dealing with boosting loads has been fixed

Fixture Schedule

- Various Fixture Schedule bugs have been fixed

One-Lines

- Missing Power Feed icons on the One-Lines have been added
- DXF Export for One Line power diagram has been implemented
- The wattages of fixtures are now correct in the power diagram
- PDF Export for all Reports and One Line diagrams has been implemented

Equipment Schedule

- Displaying Breaker options for XP Panels has been implemented

Specify

- Specify bugs related to 12 Volt Power Supplies have been fixed
- Timeclock-related issues have been resolved

Help

- Added Lutron contact information to the help file
- Bug occurring when the program was closed while the help was still open has been fixed