

ConfigureIT™ Software

A software license for *ConfigureIT* software enables a user to control and receive real-time feedback while making temporary or permanent changes to the database for a Lutron centralized lighting control system (CLCS). It is run on an *eLumen* Manager (Lutron-supplied PC or server).

License Purchase Options

- As a component part of Lutron’s *eLumen* suite of software
- Separately for customer-supplied *eLumen* Manager (contact Lutron for compatibility requirements)

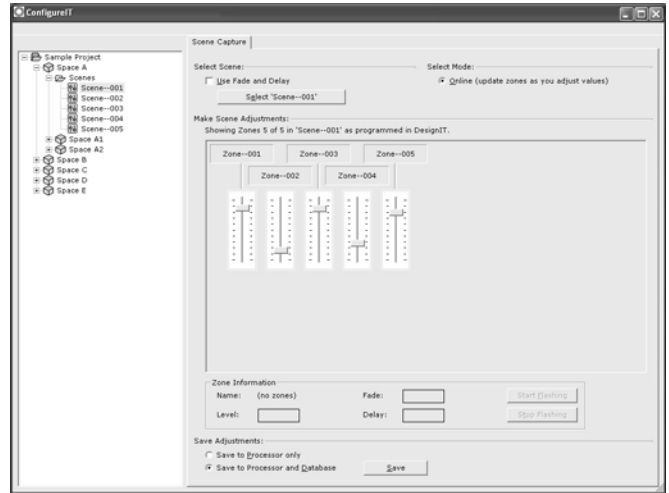
Available Companion Software

The *eLumen* Suite provides all of the components below. Each one relates to the customer’s centralized lighting control system database (CLCS database). For detailed information on any component, refer to its specific Specification Submittal, as well as the *eLumen* Manager Specification Submittal.

- ***DesignIT***: Creates the database that defines, modifies, and updates a Lutron CLCS
- ***SecureIT***: Allows a system administrator to create usernames and passwords to limit access to the CLCS database (as created in *DesignIT*)
- ***ControllIT***: Provides real-time operation of the CLCS database (as created in *DesignIT*)
- ***PictureIT***: Provides a visual graphic that allows control of preselected CLCS database items (as created in *DesignIT*)
- ***ScheduleIT***: Allows the user to temporarily adjust the scheduling of existing timeclock events within the CLCS
- ***ConfigureIT***: Allows the user to make temporary or permanent scene changes, in real time, to the CLCS database (as created in *DesignIT*)

Required Hardware

- Lutron *eLumen* Manager (PC or server; see *eLumen* Manager Specification Submittal)
- Customer-supplied *eLumen* Manager (contact Lutron for compatibility requirements)
- Lutron *GRAFIK* 5000/6000/7000 processor(s)



Software Features and Capabilities

- Online or offline scene programming via sliders representing power panel lighting zones and lighting zone controllers
- Online (real-time) or offline configuration changes to scenes
- View current scene values from the processor or the project database
- Upload scene changes to the processor and the project database
- Connect via Local Area Network (LAN) to a project residing on an *eLumen* Manager for remote use

Job Name:	Model Numbers:
Job Number:	