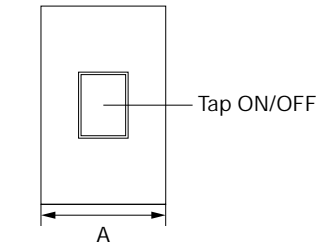


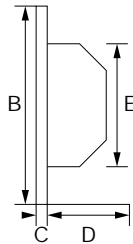
LUTRON SPECIFICATION SUBMITTAL

Job Name		Job Number	
Location		Area Controlled	
Model No. HWV-1000NS	Color	<input type="checkbox"/> WHITE <input type="checkbox"/> BEige <input type="checkbox"/> IVory <input type="checkbox"/> GRay <input type="checkbox"/> BRown <input type="checkbox"/> BLack <input type="checkbox"/> TauPe <input type="checkbox"/> Dusty Rose	

Neutral Wire Switch for Universal Lighting Loads



Base Tap Switch (HWV-1000NS) or 3- and 4-way Tap Switch (VETS-R)



Dimensions

	Inches	mm
A	2.75	70.0
B	4.50	114.0
C	.30	7.5
D	1.31	32.7
E	2.75	0.7

Function

Allows local control of one subcircuit (or channel) of lights in a HomeWorks system to turn lights on and off.

Pre-Wiring

1. Mount single-gang wallbox.
2. Pull Class 2 wires (#18 - #22 AWG, shielded two-conductor) from each wallbox to a HomeWorks HWV-PNL8 Interface Panel. (Maximum length = 500') A maximum of four dimmers and switches can be daisy-chained together on a single bus.

Specifications

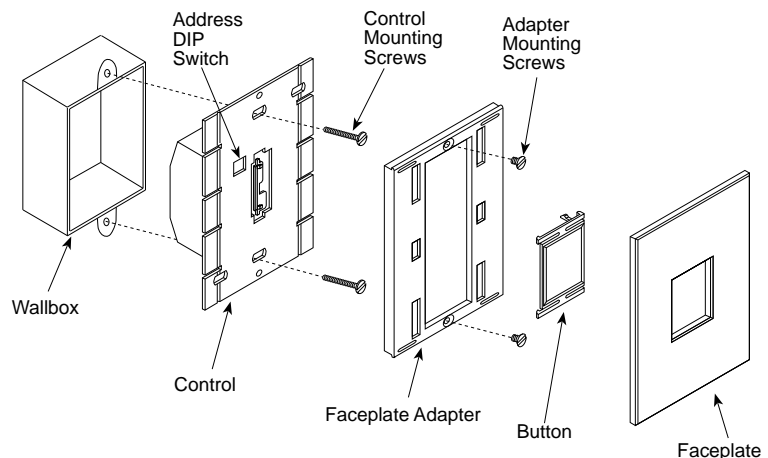
Power	Input power: 120VAC, 60 Hz	
Mounting	Single-gang U.S. wallbox	
Environmental	32 - 104 F (0 - 40C)	
Design	Faceplates: Molded plastic (8 std. color listed above)	
Load Types	Incandescent, magnetic low voltage, electronic low voltage, tungsten-halogen, neon, and fluorescent.	
Maximum Capacity*	1000W/VA**	
Auxiliary Controls	Up to 9 Lutron VETS-R for 3-way and 4-way applications.	
* For loads greater than 1000W, use Lutron's HP2,4,6 interfaces.		
** For multi-gang installations, derate load capacity as follows:		
Model No.	End of Gang	Middle of Gang
HWV-1000NS	900 W/VA	700 W/VA

Reliability

HWV-series local switches will operate independently if the central microprocessor is not functioning.

Features

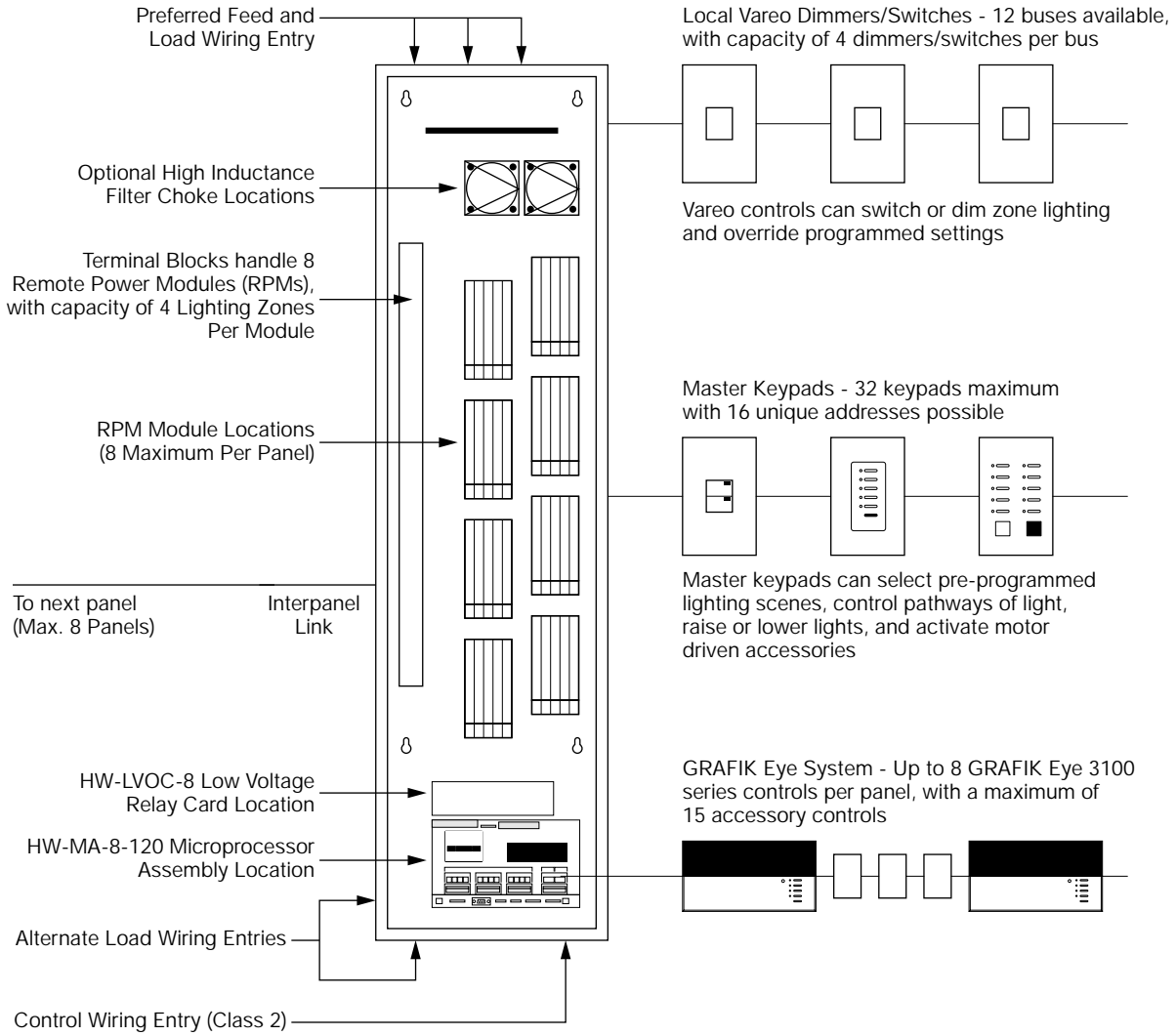
- Local switching of any load type
- Remote switching from any master keypad



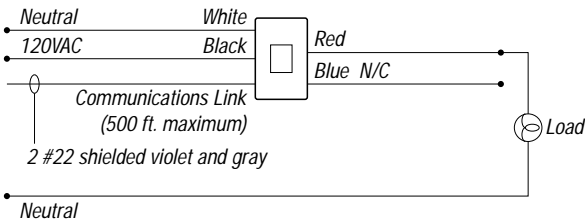
Lutron Electronics Co., Inc.
7200 Suter Road
Coopersburg, PA 18036, USA
9/96 P/N 362-984

For additional submittal sheets, call our Hot Line and Fax-on-Demand Service at 1-800-523-9466, or visit Lutron's Web site at <http://www.lutron.com/resi>

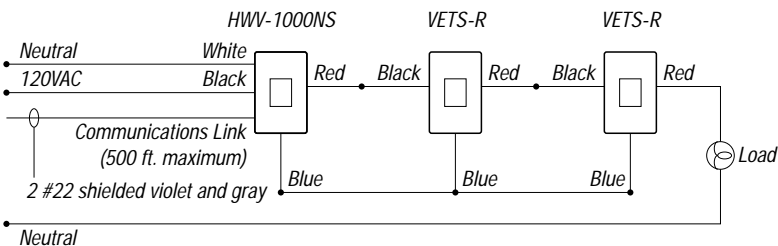
Overview of HomeWorks Integrated System



Single Location Installation



Multi-Location Installation



Warranty

Lutron will, at its option, repair or replace any control that is defective in materials or manufacture within two years after the purchase.

This warranty is in lieu of any other warranties, express or implied, and the implied warranty of merchantability is limited to two years from purchase.

This warranty does not cover the cost of installation, removal or reinstallation, or damage resulting from misuse, abuse, or improper wiring or insulation.

This warranty gives you specific legal rights, and you may also have other rights which vary from state to state. Some states do not allow the exclusion or limitation of incidental or consequential damages, or limitations on how long an implied warranty may last, so the above limitations and exclusions may not apply to you.

Printed in U.S.A.

© 1996 Lutron Electronics Co., Inc.