

# Troubleshooting

Symptom	Possible Cause
Light does not turn ON.	<ul style="list-style-type: none"> <li>• Front Accessible Service Switch (FASS™) on Dimmer is pulled out to the OFF position.</li> <li>• Light bulb(s) burned out.</li> <li>• Breaker is OFF or tripped.</li> </ul>
Dimmer does not respond to Keypad button press.	<ul style="list-style-type: none"> <li>• Dimmer is out of RF range.</li> <li>• Dimmer not activated to system.</li> <li>• Keypad not activated to system.</li> </ul>
Dimmer does not switch from 3-way location.	<ul style="list-style-type: none"> <li>• Miswire—check wiring with 3-way or 4-way diagram on page 1.</li> <li>• Dimmer is in 4-way location—move Dimmer to 3-way location.</li> </ul>

These products may be covered under one or more of the following U.S. patents: 5,248,919; 5,637,930; 5,838,226; 5,848,054; 5,905,442; 5,982,103; 6,687,487; 6,803,728; 7,091,672; D428,855 and corresponding foreign patents. U.S. and foreign patents pending. Lutron, Fassada, AuroRa, and the sunburst logo are registered trademarks and FASS is a trademark of Lutron Electronics Co., Inc. NEC is a registered trademark of the National Fire Protection Association. CAPSYLITE and DESIGNER are registered trademarks of Osram Sylvania, Inc. PAR-16 is a trademark of Royal Philips Electronics. These products may be covered under one or more of the following U.S. patents: 5,248,919; 5,637,930; 5,838,226; 5,848,054; 5,905,442; 5,982,103; 6,687,487; 6,803,728; 7,091,672; D428,855 and corresponding foreign patents. U.S. and foreign patents pending. Lutron, AuroRa, and the sunburst logo are registered trademarks of Lutron Electronics Co., Inc. © 2007 Lutron Electronics Co., Inc.

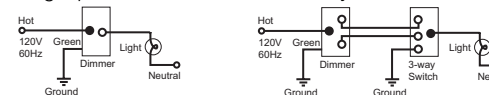
# AuroRa®

## Installation Instructions for Replacement Dimmer

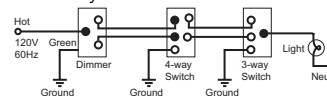
Read all instructions completely before installation.

### Important Notes

- Caution:** To avoid overheating and possible damage to other equipment, do not use dimmers to control receptacles, fluorescent lighting fixtures, motor-operated or transformer-supplied appliances.
- Use dimmers with 120 V incandescent lighting fixtures only. Do not use with low-voltage transformers.
- Install in accordance with all national and local electrical codes.
- When there is no ground wire or a way to connect the wallbox to ground within the wallbox the NEC® 2002, Article 404-9 allows a dimmer without a grounding connection to be installed as a replacement (as long as a plastic, noncombustible wallplate is used). For this type of installation, cap or remove the green ground wire on the dimmer, and use an appropriate wallplate (such as Lutron's Fassada® series wallplates).
- Do not paint dimmers or wallplates.
- Cleaning Instructions: Clean with a soft damp cloth only. Do not use any chemical cleaners.
- The total wattage of all light bulbs controlled by each dimmer must be between 50 and 600 watts.
- Dimmers work with most incandescent light bulbs. Dimmers may not work with dioded light bulbs (Sylvania DESIGNER 16™ or Philips PAR-16™).
- Operate system in temperatures between 0 °C (32 °F) and 40 °C (104 °F).
- Dimmer may feel warm to the touch during normal operation.
- Recommended wallbox depth is 2 1/2 in. minimum.
- Single-pole circuit



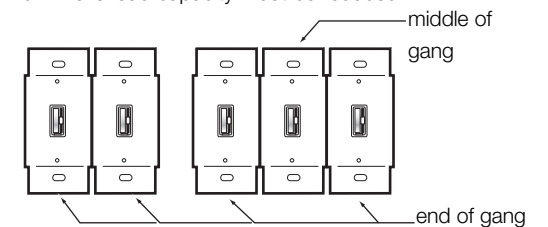
Four-way circuit



## Incandescent / 120 V Halogen Dimmer AR-6D

120 V~ 50/60 Hz 600 W

- When combining dimmers in the same wallbox, the dimmer's load capacity must be reduced.



Follow the load capacities in table below for multi-ganged dimmers.

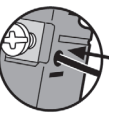
Derating Chart

Model	Not Ganged	End of Gang	Middle of Gang
AR-6D	600 W	500 W	400 W

### 14. Wire Preparation

Trim or strip wallbox wires to the length indicated by the strip gauge on the back of the dimmer.

**Push-in:** To reinstall, simply insert wires by hand. Use #14 AWG solid copper wire only. For aluminum wire, consult an electrician. DO NOT use stranded or twisted wire.

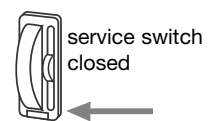
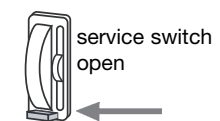


**Screw Terminals:** Tighten securely. Screw terminals are for use with solid copper wire only. For aluminum wire, consult an electrician. DO NOT use stranded or twisted wire.



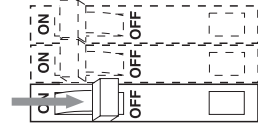
### 15. Service Switch

Pull service switch out to open position to replace light bulbs (this cuts all power to the dimmer). Push service switch in after new bulb is installed to restore power.



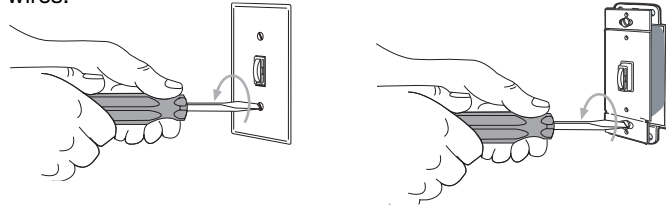
## Installing a Replacement Dimmer

- 1 Turn power off at corresponding circuit breaker or remove fuse



**WARNING:** Power must be turned off for your safety.

- 2 Remove wallplate and existing dimmer. Do not disconnect wires.



- 3 Uninstall existing dimmer

A. Verify that current wiring is correct. Correct the wiring if it is not correct. Refer to wiring diagrams in note 12 under Important Notes (page1).

B. Note which wire(s) are connected to each terminal. The replacement dimmer will be installed identically.

C. Disconnect the wires from the dimmer.

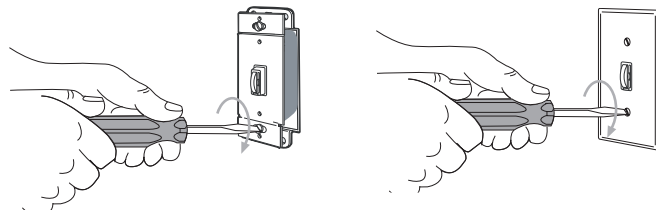


**Need Help?**  
Call Lutron's Technical Support Center - open 24 hours a day, 7 days a week.  
**1.800.523.9466**

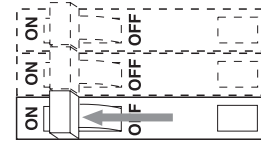
- 4 Install replacement dimmer

Connect the wires to the terminals on the replacement dimmer in the same configuration they were connected to the old dimmer.

- 5 Mount dimmer and install wallplate



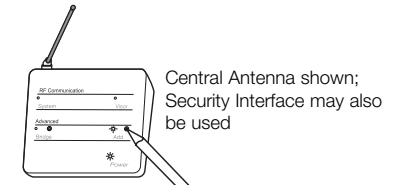
- 6 Turn power on at circuit breaker or replace fuse



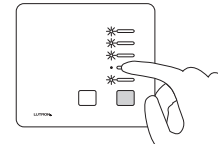
## Activating the Replacement Dimmer

The *AuroRa* Replacement Dimmer can be activated in the system using either the Central Antenna (AR-CA-WH) or the Security Interface (AR-SI-WH). The procedure below refers to the Central Antenna; however, the procedure is the same for the Security Interface.

- 1 Enter advanced "Add" Mode.  
Press and hold the "Add" button on the Central Antenna until the "Add" LED light begins to flash (approximately 3 seconds).

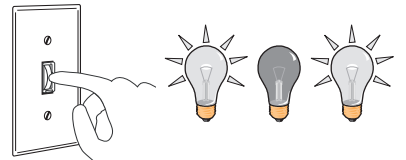


- 2 Choose Master Control Button for Dimmer to Activate.  
Dimmers that are in the system will flash their lights. The Master Control will have the following LED feedback: LED flashing corresponds to a Dimmer present and LED off corresponds to a Dimmer not present.



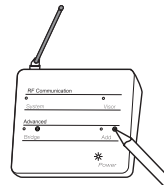
Press and hold the Master Control button that corresponds to the Dimmer not present (LED off), until the LED turns on.

- 3 Activate Dimmer.  
Press and hold the button on the Replacement Dimmer until the Dimmer begins flashing its lights (approximately three seconds).



The selected Master Control button will flash its LED.

- 4 Exit advanced "Add" Mode.  
Press and hold the "Add" button until the "Add" LED light stops flashing and remains off (approximately 3 seconds). The Dimmers will stop flashing their lights, the Master Control will stop flashing its LEDs.



- 5 The Replacement Dimmer has now been activated.