

An AuroRa® system can be expanded to control ten *AuroRa* dimmers by bridging two *AuroRa* systems together.

Bridging Two *AuroRa* Systems Together

Follow the steps below to Bridge two *AuroRa* Systems.

- 1 Purchase and install two separate *AuroRa* Systems.
- 2 Press and hold the “Bridge” button on the Central Antenna of either system for 3 seconds. The “Bridge” LED should flash slowly.
- 3 Press and hold the “Bridge” button on the second Central Antenna for 3 seconds.

The “Bridge” LED should flash slowly. The LEDs on both Central Antennas will begin to flash quickly as the bridging process starts. The loads in both systems will start flashing.
- 4 When the process is finished, the “Bridge” LEDs on both Central Antennas will stop flashing and stay on. The loads in both systems will stop flashing.
- 5 The systems are now bridged.

Unbridging The System

For information about returning your system to its original default settings, visit www.lutron.com/aurora.

Bridged System Functionality

“All On” Button

All Dimmers in both systems will turn on to full brightness.

“All Off” Button

All Dimmers in both systems will turn off.

“Favorite” Button

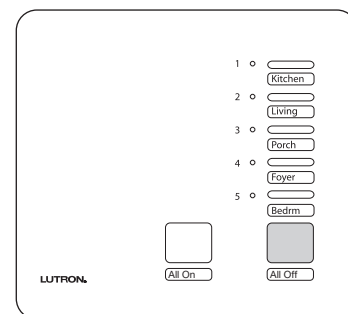
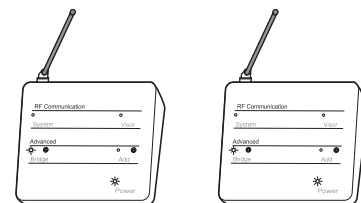
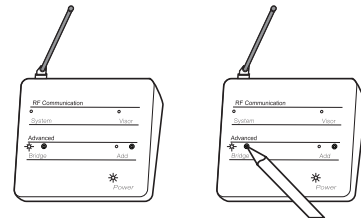
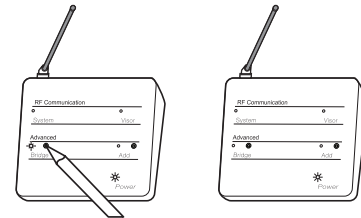
All Dimmers in both systems will turn on to their local slider levels.

The Central Antenna should be at least 3 ft. apart and within 60 ft. of each other when bridging two systems.

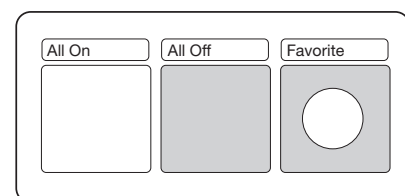


Central Antenna

Central Antenna shown; Security Interface may also be used



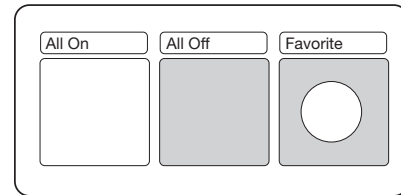
Master Control



Wireless Controller

Activating Additional Wireless Controllers (nine maximum)

Before additional Wireless Controllers can be used to control lights in the AuroRa® system, they must be activated. Follow the steps below to activate a Wireless Controller.

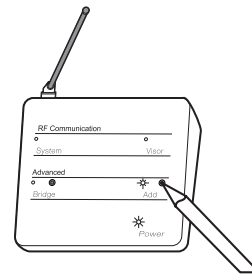


Wireless Controller

1 Enter advanced “Add” mode

Press and hold the “Add” button on the Central Antenna until the LED light begins to flash (approximately 3 seconds).

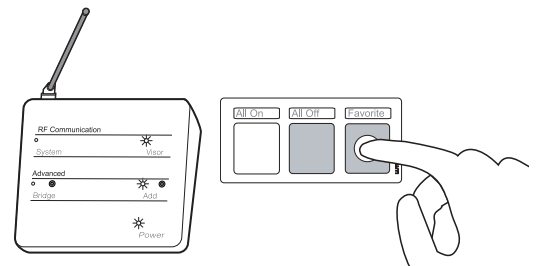
Dimmers that are in the System will flash the lights connected to each. The Master Control will flash the LEDs corresponding to Dimmers present in the system.



Central Antenna shown; Security Interface may also be used

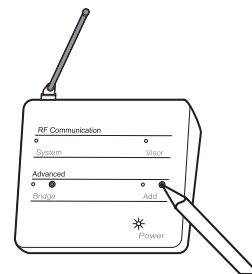
2 Activate Wireless Controller

Press and hold any button on the Wireless Controller until the “Visor” LED light on the Central Antenna starts flashing (approximately three seconds), indicating the Wireless Controller has been activated in the system. The “Add” LED and the “Visor” LED will remain flashing until the Wireless Controller button is released.



3 Exit advanced “Add” mode

Press and hold the “Add” button until the “Add” LED light stops flashing and remains off (approximately 3 seconds). The Dimmers will stop flashing their lights.



4 The Wireless Controller has now been activated.