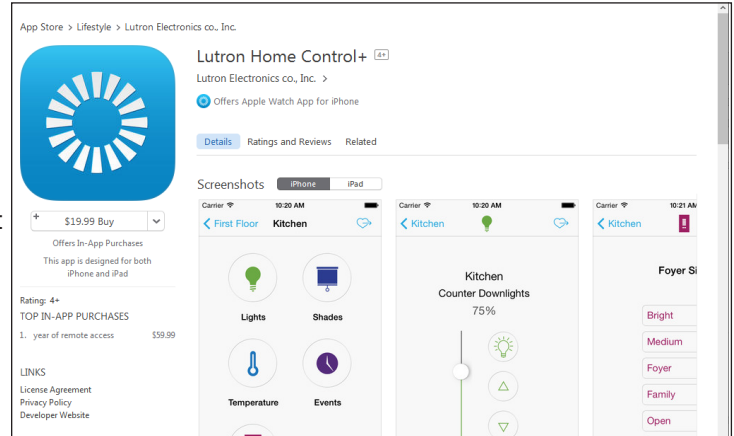


Lutron® Home Control+ Quick Start Guide (iOS™)

Lutron® Home Control+ App for Apple iPad, iPhone and iPod touch

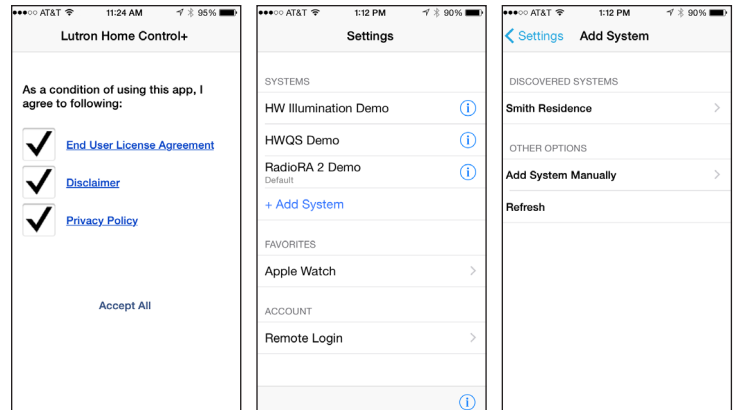
1. Download

- Search “Lutron® Home Control+” in the Apple App Store.
- Download and install “Lutron® Home Control+”.
Note: A separate app, “Lutron® Home Control+ Sales Tool”, is a sales tool intended to demonstrate certain functions of the app. The sales tool is unable to connect to an actual HomeWorks® QS or RadioRA® 2 system.



2. Connect

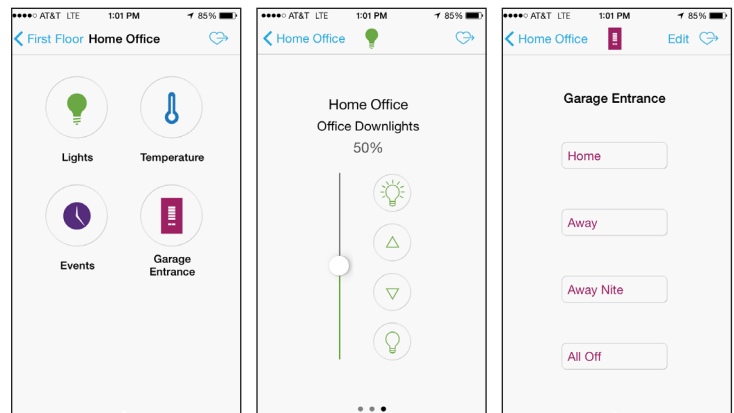
- Connect the mobile device to the same network as the HomeWorks® QS or RadioRA® 2 system.
- Open “Lutron® Home Control+” on the mobile device.
- Accept the terms and conditions by checking each of the boxes, then select the “Accept All” option.
- Select the “Add System” option. Once the system is auto-discovered, select it from the list. If desired, follow the on-screen instruction to set up the system’s Remote Access capability. For instructions on setting up Remote Access, see Page 2.
- To add a system manually, please reference the full “Lutron® Home Control+” App Note.*



3. Control

Navigate to the desired room to:

- Adjust Lights
- Adjust shades
- Adjust temperatures
- View and edit events
- View and edit HVAC schedules
- Activate keypad button scenes



* Please reference the “RadioRA® 2/HomeWorks® QS Home Control+ App Guide” - a comprehensive guide for setup and best practices found on www.lutron.com under “Service & Support” → “Application Notes” within the HomeWorks® QS and RadioRA® 2 sections. myLutron Authorized Installer access is required to view the guide.

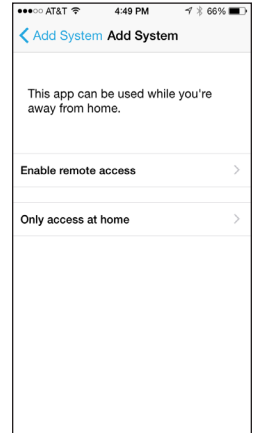
Apple, iPad, iPhone, and iPod Touch are trademarks of Apple Inc., registered in the U.S. and other countries. iOS is a trademark of Cisco in the U.S. and other countries and is used under license.

Setting Up Remote Access

Setting up a remote access connection to the system will allow control of lights, shades, and temperature from inside and outside the home when there is an internet connection available.

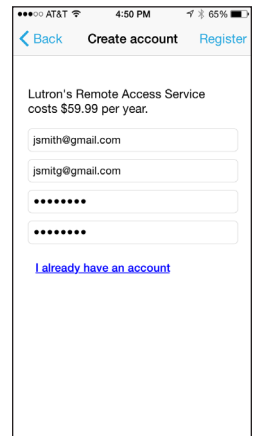
Prior to completing these steps, please complete Steps 1 and 2 on the previous page.

1. When adding a system, a prompt will appear providing the option to enable remote access. Select "Enable remote access".

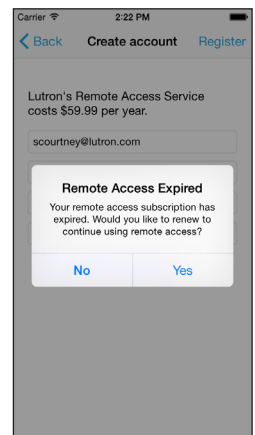


2. The following screen will request the e-mail and password you wish to use as an account. If you already have an account, select the "I already have an account" link and input your existing credentials.

Note: Your password must be 7 to 15 characters long and include at least 1 letter and 1 number.



3. Agree to the Remote Access charge or renewal (depending on the status of your remote access account, only one prompt will appear).



Lutron, HomeWorks, and RadioRA are registered trademarks of Lutron Electronics Co., Inc.

Lutron Contact Numbers

WORLD HEADQUARTERS USA

Lutron Electronics Co., Inc.
7200 Suter Road
Coopersburg, PA 18036-1299
TEL: +1.610.282.3800
FAX: +1.610.282.1243
Customer Assistance:
1.844.LUTRON1

intsales@lutron.com

North & South America Technical Support

USA, Canada, Caribbean:
support@lutron.com
forums.lutron.com
1.800.523.9466

Mexico:
+1.888.235.2910

Central/South America:
+1.610.282.6701

EUROPEAN HEADQUARTERS United Kingdom

Lutron EA Ltd.
6 Sovereign Close
London, E1W 3JF United Kingdom
TEL: +44.(0)20.7702.0657
FAX: +44.(0)20.7480.6899
FREEPHONE (UK): 0800.282.107
Technical Support: +44.(0)20.7680.4481

lutronlondon@lutron.com

ASIAN HEADQUARTERS Singapore

Lutron GL Ltd.
15 Hoe Chiang Road
#07-03, Tower 15
Singapore 089316
TEL: +65.6220.4666
FAX: +65.6220.4333
Technical Support: 800.120.4491

lutronsea@lutron.com

Asia Technical Hotlines

Northern China: 10.800.712.1536
Southern China: 10.800.120.1536
Hong Kong: 800.901.849
Indonesia: 001.803.011.3994
Japan: +81.3.5575.8411
Macau: 0800.401
Taiwan: 00.801.137.737
Thailand: 001.800.120.665853
Other Countries: +65.6220.4666