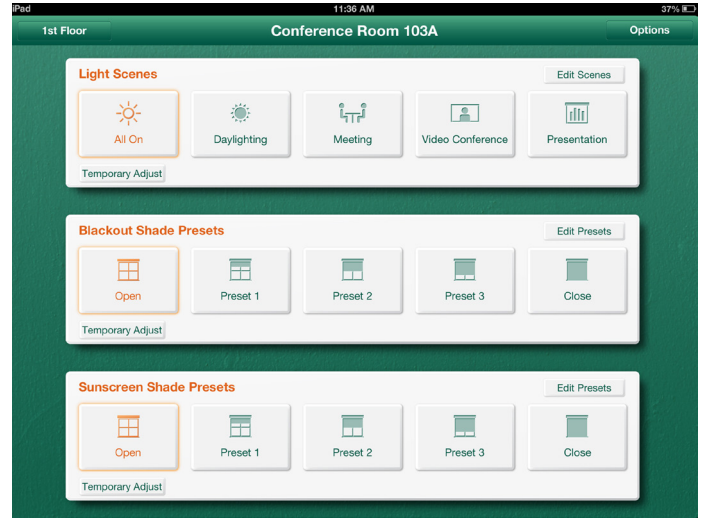


# Quantum Mobile Control and Programming Software License

This software license allows mobile control and programming of a Quantum system via an *Apple iPad*<sup>1</sup> which communicates to the system on a local area network (LAN) or corporate intranet.

## Features

- Control and monitor<sup>2</sup>:
  - Area lighting scenes and zones
  - Lutron Sivoia QS shades
  - White tuning with Lutron T-Series zones
- Edit<sup>2</sup>:
  - Adjust area scene lighting levels
  - Adjust area scene fade and delay times
  - Adjust shade preset levels
  - Make zones unaffected in scenes
  - Copy and paste area scenes
- Area access control provided to restrict access to specific areas per user
- The ability to limit access to the edit function
- Identify zones by flashing
- Historical logging of who made changes. Report can be viewed in Quantum Vue<sup>3</sup> in Quantum systems that have a server
- App can be used with a server connected through Q-Gateway, or without a server connected directly to the processor
- Languages supported: English, Spanish, French, German and Simplified Chinese
- Quantum Mobile Control and Programming Software can be used wirelessly (using *iPad* app or Windows<sup>®</sup> app) or with a wired Ethernet connection<sup>4</sup> (only available when using the Windows<sup>®</sup> app)



Quantum Mobile Control and Programming Software License (QSW-MC-PS-A)

Software Compatibility Chart			
Quantum Version	Apple App Version	Server to Device	Processor to Device <sup>6</sup>
2.6	1.0/2.2/2.3/2.5	✓	X
2.7	2.2/2.3/2.5	✓	✓
3.0	2.3/2.5	✓	✓
3.1	2.3/2.5	✓	✓
3.2	2.3/2.5	✓	✓
3.4	2.5	✓ <sup>5</sup>	✓

<sup>1</sup> iPad not included.

<sup>2</sup> For GRAFIK Eye QS applications, reconfiguration of scenes is done from the GRAFIK Eye QS main unit (the Quantum Mobile Control and Programming software is not used to reconfigure these devices). This App cannot control CCO Integration zones and DMX 3-channel lighting zones.

<sup>3</sup> Q-Admin is used to view the report in the Quantum versions prior to 3.2.

<sup>4</sup> Device must be equipped with a wired ethernet connection.

<sup>5</sup> When multiple instances of Quantum are installed on the same server, Q-Control+ will work with the first server, only.

<sup>6</sup> Direct connection to the processor is not supported on jobs with multiple Quantum subsystems.

<b>Job Name:</b>	<b>Model Numbers:</b>
<b>Job Number:</b>	

## Administration

- Administrators can manage user accounts from the App
  - Create and configure usernames and passcodes
  - Configure area access rights
  - Configure edit privilege
- Administrators can set up new connections to the system and configure access rights
- Secure access to lighting system through Lutron® Q-Control+ App provided by network security (provided by others), creation of administrator user account(s)/ passcode(s), and through the security PIN of the device
- App connectivity requires Quantum Mobile Control and Programming software license
- Network access point(s) and connectivity with Quantum server to be provided by the customer
- Network components to be set up and configured by the customer's IT department
- This App will function only on a local network or company intranet; it is not intended for use via the Internet
- The following TCP ports need to be opened between the mobile device and the server: 5443, 5327
- Server requires a static IP address when connecting via the server
- A gateway address is required for Quantum Processor to mobile device connections where the connection to the mobile device is on a different Ethernet network than the Quantum Processor

## Requirements for Server to device Connection

- *iPad* mobile digital device
  - Lutron Q-Control+ App version 1.0 or greater
  - iOS version 8.x or greater
  - Lutron tested models: *iPad* Air 2, and *iPad* mini
  - Quantum version 2.6 or later
  - *Apple* ID required to download the Lutron Q-Control+ App from the *App Store* (if using *iPad*)
- Quantum server (can be physical or virtual)
- 1 license required per device per Quantum system
- The maximum number of concurrent devices used on a Quantum Server: 20

## Requirements for Quantum Processor to device Connection

- Lutron Q-Control+ App version 2.0 or greater
- Quantum software suite version 2.7 or later
- 1 license required per device per Quantum system
- The maximum number of concurrent devices used on a Quantum Processor: 2
- Only one sub-system can be controlled when connected directly to a processor. Multiple sub-systems need a server connection to be controlled from the same application

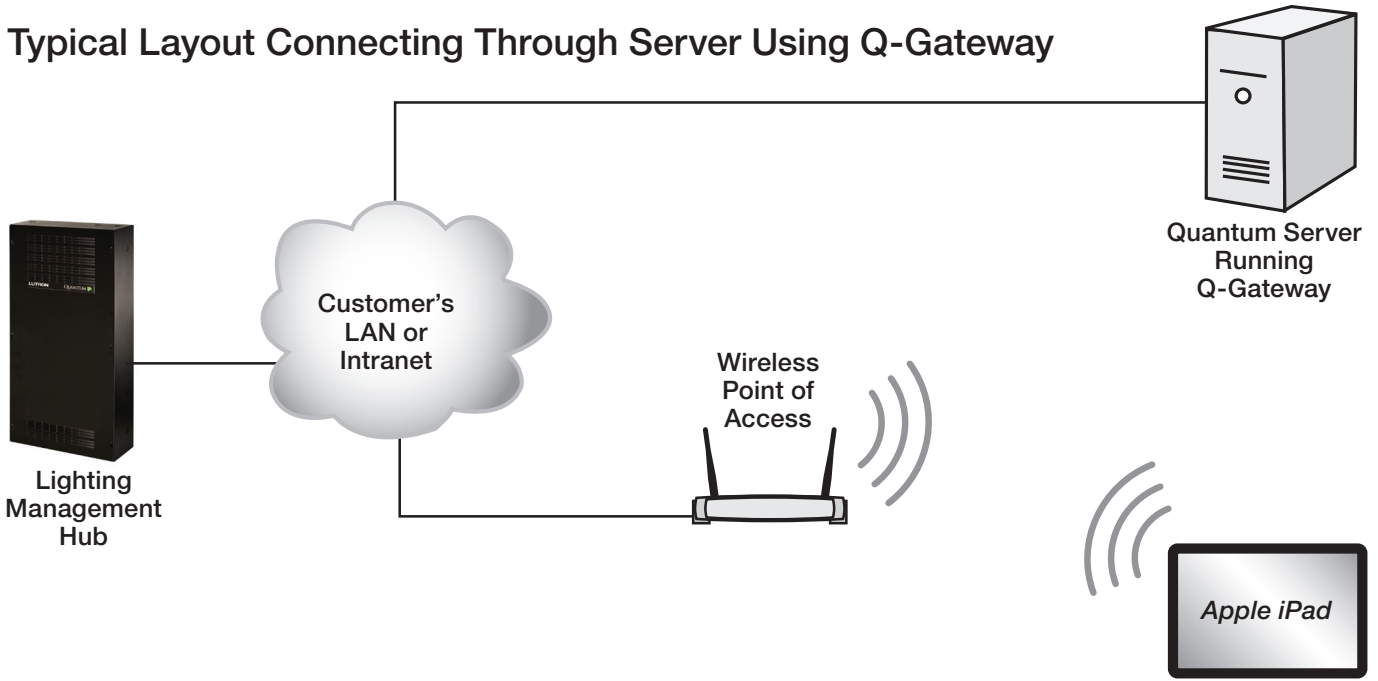
## Lutron Recommendations

- Prior to using the Quantum Mobile Control and Programming Software, your network should be configured and in use
- Mounting an *iPad* on a wall for use with the Q-Control+ app is not recommended
- LSC-INT-VISIT: A Lutron Service Representative will attend a meeting to discuss building network requirements at the location determined by a facility representative. This visit should take place prior to start-up
- LSC-AF-VISIT: A Lutron Service Representative will attend an aim-and-focus visit to make lighting adjustments at the direction of a lighting designer

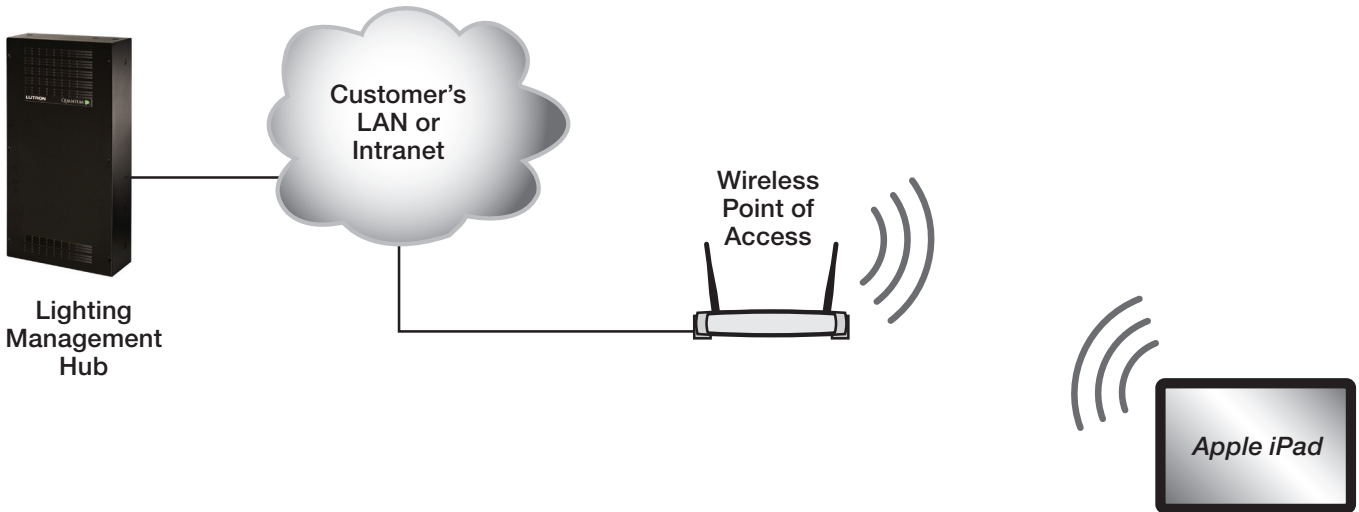
## Networking Requirements

Job Name:	Model Numbers:
Job Number:	

### Typical Layout Connecting Through Server Using Q-Gateway



### Typical Layout Connecting Through the Quantum Processor



Lutron, Quantum, GRAFIK Eye, Q-Admin, and Quantum Vue are trademarks or registered trademarks of Lutron Electronics Co., Inc. in the US and/or other countries.  
 Apple and iPad are trademarks of Apple Inc., registered in the U.S. and other countries.  
 App Store is a service mark of Apple Inc., registered in the U.S. and other countries.

Job Name:	Model Numbers:
Job Number:	