

# 澳门品光

Taste of light  
in Macau

文字：爱丽丝·罗  
by Alice Ro



澳门威尼斯人度假村酒店占地100万平方米。赌场式的酒店格局与拉斯维加斯的姊妹店别无二致。这里共有四家赌馆，850张赌桌以及数千台老虎机。豪华的游泳池及奢侈的疗养中心，皆通过路创 LCP 128 照明控制系统来控制。再加上11.1万平方米的会议中心，使其不愧为全球第二大建筑

The Venetian® Macau-Resort-Hotel luxuriously sprawling one million square meter hotel-casino located on the Macau Strip recalls its sister hotel in Las Vegas. Four luxurious casinos with over 850 gambling tables and thousands of slot machines, a magnificent pool and spa complex controlled by Lutron LCP 128™ lighting control system and an 111,000 m<sup>2</sup> convention center makes it the second largest building in the world



## 项目信息 Project Information

项目名称 Project name:	澳门威尼斯人度假村酒店 The Venetian Macau Resort
地理位置 Location:	澳门 Macau
面积 Area:	1百万平方米 1 million m <sup>2</sup>
发展商 Developer:	美国拉斯韦加斯金沙集团 Sands Las Vegas Corporation
建筑单位 Architects:	HKS(美国 USA), Aedas(香港 Hong Kong), Wilson Associates(美国USA)
照明设计 Lighting Design:	FMS(美国 USA)
照明控制系统供货商 Lighting Control System Supplier:	路创电子公司 Lutron Electronics Co., Inc.

澳门威尼斯人度假村酒店开张大吉，营业的第一周，就迎来了17万人次的游客。

作为世界第二、亚洲第一大规模的单一结构酒店，威尼斯人可以提供会议室、展厅、3000间全套客房、100万平方英尺（相当于93000平方米）的零售空间以及15000座位的威尼斯人综合馆。此综合馆可按照不同的活动去改变灯光环境，全赖路创的GRAFIK 4000™照明控制系统。

酒店建于海上的一块人工陆地，将 Taipa 和 Colon 两片高地衔接起来。此次任务动员用了庞大的设计队伍，业内顶尖的设计师、工程师和建筑师均云集于此：美国得克萨斯的 HKS、香港的 Aedas 以及 Wilson Associates 参与了室内设计；Artikel 参与了零售空间的设计；而美国的Fisher Marantz Stone (FMS) 则成为本次项目中唯一的照明设计单位。

## 设计有感

除了庞大的规模，酒店真正令人震撼的地方在于富丽堂皇及气势磅礴的外观，再配合室内雍容华贵的装饰。华丽的造型、一掷千金的装饰，设计师志在将文艺复兴时期威尼斯的美丽面容呈献给游客：室内的风格宛如威尼斯的piazza 广场；人工运河、威尼斯平底小船以及哼着意大利歌曲的贡多拉船夫，在蓝天白云的映衬下，增添了迷人的情致。整个设计主题是“东西方文化的交汇”，为意大利和中国风格撮合一段超越时空的姻缘。设计师挑选了上等的大理石、带异国情调的木质饰面、精雕细琢的艺术品和具有“中国装饰风格”的壁画，整个设计风格非常富有情调。在颜色的选取上，客户要求利用空间的象征意义，严格遵循中国的风水传统。如此壮观、多彩的场面沉淀了中国千年的文化

图1：澳门威尼斯人度假村酒店内饰

图2：圣马可广场、桥面和运河。天花犹如真实的天空；重塑了自然光的效果

图3：引领游客进入客房的走廊。优雅的枝型吊灯让人想起意大利的巴洛克风格

Picture 1: The interior view of The Venetian® Macau-Resort-Hotel

Picture 2: St. Marco Square, with the bridge and the Canal. The ceilings resemble a real sky, and the effect of natural lighting is completely recreated

Picture 3: One of the corridors leading visitors to the guest rooms. Posh chandeliers recall the baroque Venetian style



Since its grand opening, The Venetian® Macau-Resort-Hotel has continued to attract an unprecedented number of visitors, with 170,000 visitors in the first weekend alone. It is the largest single-structure hotel in Asia and the second largest in the world. The Venetian® Macau-Resort-Hotel features meeting, convention and exhibition space, 3,000 all-suite guest rooms, and one million square feet of retail space, as well as a 15,000-seat Venetian Arena with variable lighting environment for different events, thanks to the Lutron GRAFIK 4000™ lighting control system.

The construction is based on an artificial piece of land, build on the sea, joining two highlands, Taipa and Colon. Teams of designers, engineers, and architects were chosen to organize the vast amount of work: HKS in Texas (U.S.A.), Aedas in Hong Kong, and Wilson Associates managed the interior decoration, while Artikel was in charge of retail design. Fisher Marantz Stone (FMS) from the U.S. was the only lighting design company selected. The opulent spaces feature Italianate interiors with extensive lighting accentuating the architecture. The retail area, a replication of Venice's Saint Mark's Square is served

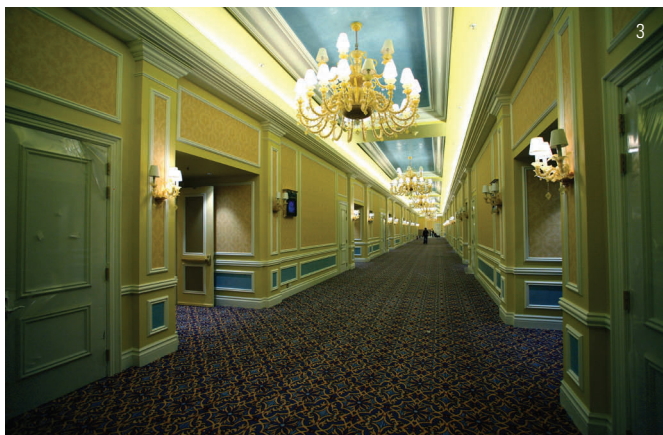
by three canals including gondolas (with singing gondoliers) and bridged pathways with elegant decorative lanterns and a spectacular sky ceiling illuminated by indirect metalhalide, fluorescent, and LED fixtures in a continuous 2km "horizon" cove. The site is surrounded by a fantastic glowing lagoon, which is faithful to the real Venice landscape.

## Design Tips

Built on an impressive scale, the real impact of the resort lies in the design of its massive spectacular exterior which is matched by an equally breathtakingly opulent interior. Replicating the beauty of Renaissance Venice with ornate moldings and lavish decoration, the interior also features a 'piazza' in the Venetian style. Architectural canals, gondolas, and singing gondoliers under a painted blue sky all add to the charm of the experience. The overall design theme is "East meets West" creating a timeless marriage of Italian & Chinese styles. The hotel designers incorporated the best in marbles, exotic wood veneers, custom art & accessories and inspired "chinoiserie" murals which add to the overall ambiance. Color schemes were developed around the symbolism of the space



2



3

底蕴。Wilson Associates曾言“该项目让人兴奋不已的是，它是一个名副其实的24小时工程，项目每分每秒都在施工。”从具有代表性的柱廊，到金、蓝色相间的豪华套房，再到四个风格迥异的赌馆，独到的空间设计与周围的环境水乳交融，带给游客一种永志难忘的经验。

## 照明设计

据 FMS 负责人查尔斯·史东 (Charles Stone) 透露，“澳门威尼斯人度假村酒店的照明设计非常有趣，但挑战重重”。“这是一个巨型工程，当中又包括了数个大型工程。照明设计需要渗入到零售空间、酒店的客房、度假村、综合馆，同时需要将外部环境进行重塑。设计理念与拉斯维加斯的威尼斯酒店是一致的，唯一的不同之处是澳门的规模更大、更宏伟。”整个工作任务被划分给不同的团队，设计小组更专门参考了意大利威尼斯的照片，期望通过使用各式各样的灯具及灯光效果重塑这种意境。

公共区域的照明由 FMS 负责，主要表现了四个主题：由小桥、运河及大街贯穿并长达一公里的零售区；赌场；会议及展览中心；以及一个规模可以媲美纽约市麦迪逊花园广场的综合馆。

### 实时稳定系统，赌场的理想选择

路创的 GRAFIK 7000™，通过其内置的专利技术 RTISS™ (实时照明稳定系统)，确保了光线输出的稳定性，即使在发生电涌时同样非常稳定。这对像威尼斯赌场这样的高回报业务是非常重要的。如果没有 RTISS，任何电力的波动都可能导致灯光闪烁，并打扰客户，从而可能带来业务上的巨大损失。GRAFIK 7000™ 可联网操作，容许营运经理通过网络以计算机软件监察及设定灯光亮度。灯光的变化可以通过时间表自动控制，节省大量人力在不同地点及空间调节灯光，更可避免错误地调整不相关灯光的可能性。

### 照明控制以营造不同的氛围

赌场的巨型吊灯是通过路创的 GRAFIK 5000™ 系统来控制，部份灯光被调暗以突出屋顶华丽的壁画。此外，赌场不同区域有不同的灯光亮度以配合当中的装饰。GRAFIK 5000™ 还可以延长灯泡的寿命，节省可观的维护成本。由于赌场是一天24小时营业的，如果封锁某个区域以进行维护，势必会造成不便。

### 私密性及舒适垂手可得

追求奢华及卓越之心亦延伸至酒店的套房。所有威尼斯人度假村酒店 VIP 套房皆装上路创的 Sivoia QED™ 卷帘及平开帘，可让客人全面控制自然光及灯光。Sivoia QED 近乎无声操作，多个并排的窗户其卷帘保证齐平，以匹配 VIP 套房内奢华的装饰及布置。

### A real time stability system ideal for Casino area

Lutron's GRAFIK 7000™, with its built-in patented RTISS™ (Real Time Illumination Stability System) technology, enables stable output of light, even during a power surge. This is important for high-return businesses such as the Venetian Casino, where any electrical line noise, without RTISS in place, can lead to flickering light and disturbance to customers, with the potential for great loss in business. This system is network-based, which allows operation manager to monitor and set light level from a configured computer on the network. Change of light level can also be automated by presetting a time schedule, which saves a lot of manual work to go from space to space to vary the light level and can avoid possible mistakes in adjusting the wrong lights.

### Lighting Control for different atmospheres

The chandeliers in the casino are controlled by the Lutron GRAFIK 5000™ system. The dimming feature is enabled to emphasize the grand wall painting on the rooftop. In addition, different lighting levels can be preset to match the décor in the various sections of the casino. The GRAFIK 5000 can also extend the life of light bulbs and ultimately save a great deal of maintenance cost and inconvenience by shutting down specific spaces in a casino which operates 24-hours-a-day.

### Privacy and comfort at the touch of a button

The pursuit of luxury and excellence also extends to the hotel suites. All VIP suites are installed with Lutron Sivoia QED™ roller shades and drapery to give hotel guests total control of both electric light and natural light. Sivoia QED operates in virtual silence and perfect alignment of shades along different windows is always guaranteed to complement the luxurious décor of the VIP suites.

to adhere to the Feng Shui rules conveyed by the client. The themes were derived from various elements of the Chinese culture to produce a rich and inspiring atmosphere. As Wilson Associates explain “a fascinating aspect about this project is that it truly was a 24 hour project. There was never a moment of the day that the site wasn't being developed. From the signature colonnade upon entry to the signature gold & blue luxury suites and the four individually themed casinos, each space possesses a distinct design treatment that seamlessly blends together to create a once in a lifetime experience.

## Lighting Design

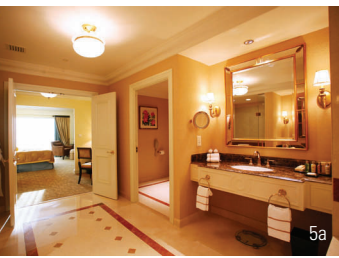
“The lighting of the Venetian in Macau was very interesting and challenging” comments Charles Stone, president of FMS. “It is one huge project that encompasses a number of big projects. In designing the light, we considered retail spaces, rooms, resorts, arena, and the reproduction of an outdoor environment. The concept is the same as that of the Las Vegas Venetian Hotel, with the difference being that the one in Macau is much bigger and grander.”

The workload was separated amongst the different teams, and photos of Venice, Italy, were observed in order to encourage the teams to think about the Italian atmosphere and recreate it through the use of many types of light. FMS designed the public lighting for the entire project, dividing the work into four main themes: retail with its 1km walk across bridges and along streets and the canal, rooms, casinos, exhibition center, conference center, and finally an arena as large as Madison Square Garden in New York City. Each area has its own specific lighting, e.g., St. Marco Square is like a cyclorama in the theater: the cloud-painted ceiling, the houses with windows made of light boxes, and the lanterns create a very romantic atmosphere. “The effect creates a “suspension of disbelief,” although you might feel uncomfortable that it is a reproduction of Venice, the result is stunning.” notes Stone. The same principle is applied as that of the theatre: the entire exterior of the square is very surreal, with each detail clearly reproduced, but – as on stage – the tricks are hidden. “There are many variations of lighting fixtures. We tried to give the illusion that an entire kilometer of retail was completely lit,

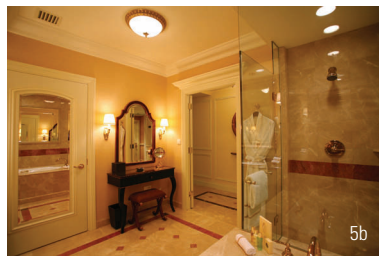




4



5a



5b

图4：威尼斯套房内部，柔和的光线与色彩丰富的家具互相搭配

图5a,5b：浴室的设计令人精神为之一振，再加上路创的Sivoia QED™ 窗帘，令整个环境更舒适及显得尊贵

Picture 4: The interior of one of the Suite available at the Venetian, lighting is warm and matches with the strong colours of the furniture

Pictures 5a, 5b: Bathrooms are made to chill the guest and Lutron Sivoia QED shades add a touch of class to create a cozy environment

所有图片提供：澳门威尼斯人度假村酒店威尼斯人度假村

All pictures courtesy: The Venetian® Macau-Resort-Hotel

每个区域的照明都别出心裁：圣马可广场仿如剧院的圆形天幕；天花犹如朵朵云彩；房间的窗户为发光的灯箱，时而又可以看到一盏盏灯笼，增添浪漫的氛围。据史东透露：“得出来的效果令人难以置信，尽管有些人可能觉得它只是一件威尼斯的复制品，但不得不承认它的效果令人震撼。”

广场的外部同样充满戏剧效果：整个广场的外观感觉疑幻疑真，每个细节都被清晰地临摹下来，游客会惊叹它的巨细无遗，但当中的窍门却永远是一个谜，正如舞台效果。

据史东介绍，“整个项目涉及到的灯具繁多。我们试图给人这样的幻觉：整个千米零售空间都被完全照亮了。而实际上我们只是巧妙地摆放少量的灯具在关键的位置，就能达到这样的效果。筒灯、白炽灯和LED灯用来制造漫射效果，欢迎游客进入威尼斯格的氛围；天花金属灯、LED灯以及陶瓷金属卤化物灯与塔上的线形荧光灯相结合，营造出奇妙的灯光效果。”

整个广场简直就是一个奇迹，充满了惊喜。不同层次的灯光营造出深度的效果，加强了游客的幻觉。一公里长的步行零售区是一项技术性的挑战。两旁建筑物的窗户都有灯箱在背后发光，视觉上给人一种幻觉，仿佛所有的窗户后面都住着人家。

立面沿线的变化更是神奇。运河沿岸使用了 Neri 和 Targetti 的灯具；圣马可广场使用了路创的 GRAFIK 5000 照明控制系统，展现出光的不同层次，创造出一天当中需要的蓝天效果；赌场使用了 MR16 白炽灯（跟据赌博条例规定），再配合路创的 GRAFIK 7000 照明控制系统。

## VIP 房间 皇室套房

这间70平方米（750平方英尺）的套房极尽奢华，复式的设计将起居室和卧室区分开，还提供一张特大豪华床。

## 贝丽套房 共有两层

## 维雅套房

维雅套房奢侈至极，每间面积达170平方米（1830平方英尺），内含封闭式卧室及宽敞的开放式起居室，再配备种种豪华设施，包括路创的超静音电子驱动窗帘。■

but we actually only used a few fittings which were placed strategically. Downlights, incandescent lightings, and LED's are used to create a diffuse lighting, which welcomes the visitors into a Venetian atmosphere. Ceiling metal highlight, LED, and ceramic metal halide combine with linear fluorescents in the towers to provide wonderful brightness," explains Stone. The square is spectacular and full of surprises. The layers of lighting reproduce the effect of depth and enhance the visitor's illusion. "The 1km long retail walk was a technical challenge. The buildings were completed visually with the use of carefully detailed light boxes to create the illusion of inhabited rooms behind all the windows. It is really magic to see all the variations along the facades. Neri and Targetti manufactured the light fittings along the Canal, and the Lutron GRAFIK 5000™ lighting control system is used in St. Marco Square to present different levels of light, with the ability to create the desired blue sky effect at any time of day. In the Casino area, incandescent MR16 lights were applied (as required by the gaming laws), while the Lutron GRAFIK 7000™ system is in place to light the games.

## VIP rooms

### Royale suite

Complete with all the lavish fittings you would expect of 70 square meters (750 square feet) of luxurious accommodation, this split level suite provides separate living space and bedroom area, complete with a comfortable king size bed.

### Bella suites

Splits over two levels

### Rialto suite

At the pinnacle of luxury, the Rialto Suite is an opulent 170 square meters (1,830 square feet), complete with an enclosed bedroom, an open spacious living room and extravagant amenities, including the ultra-quiet electronic drive shades by Lutron. ■